

3166 ACRES TRACT  
EL JARDON HEIGHTS SUBDIVISION  
(VOL. 5, PG. 48 C.C.M.R.)

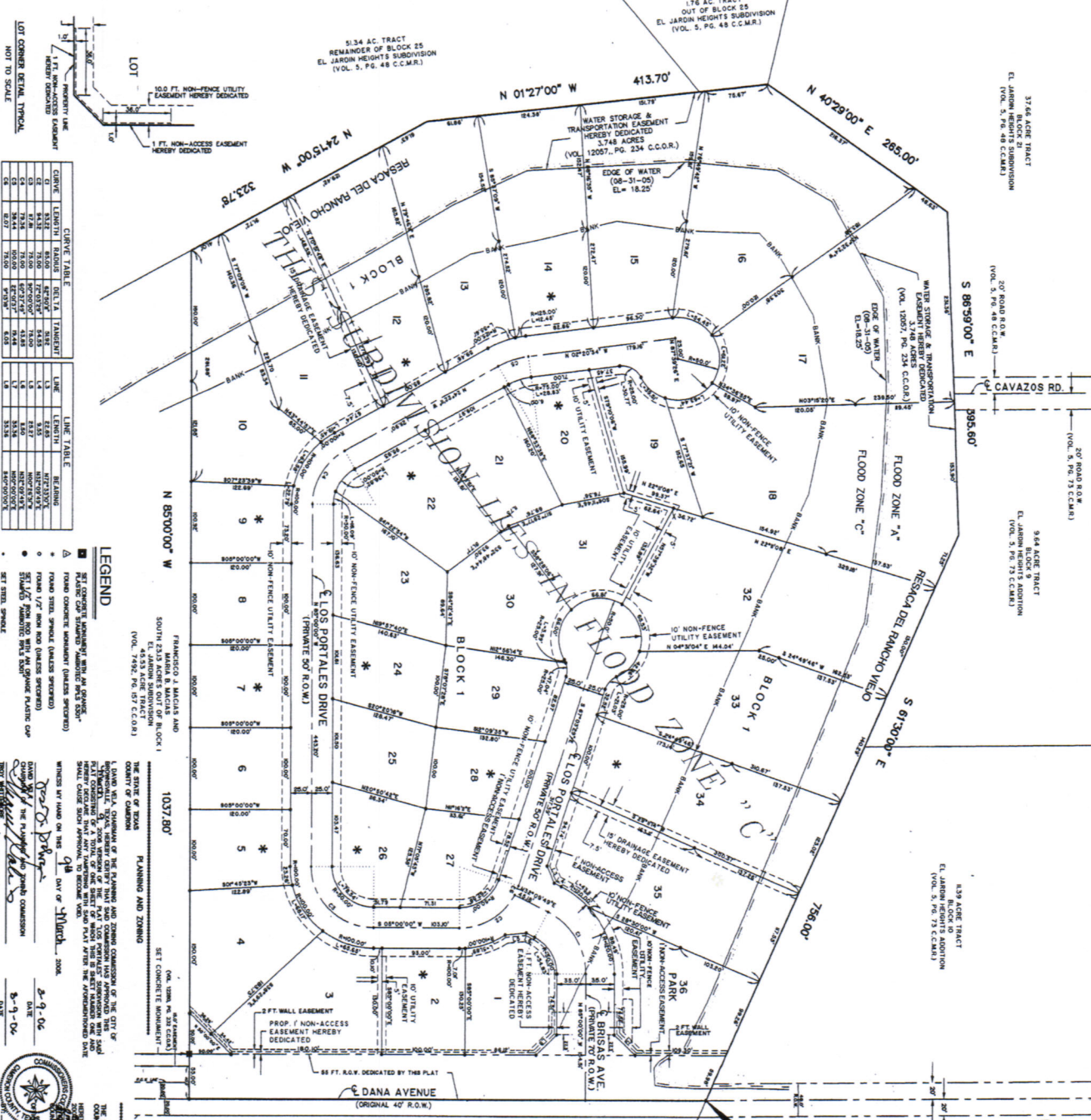
20' ROAD R.O.W.  
(VOL. 5, PG. 48 C.C.M.R.)

CAVAZOS RD.  
(VOL. 5, PG. 73 C.C.M.R.)

964 ACRES TRACT  
BLOCK 9  
EL JARDON HEIGHTS ADDITION  
(VOL. 5, PG. 73 C.C.M.R.)

189 ACRES TRACT  
EL JARDON HEIGHTS ADDITION  
(VOL. 5, PG. 73 C.C.M.R.)

300 ACRE TRACT  
EL JARDON HEIGHTS ADDITION  
(VOL. 5, PG. 73 C.C.M.R.)



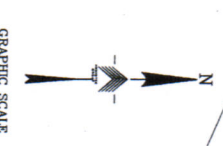
**C1-2784B**

**METS AND BOUNDS**

BEING A 22.40 ACRE TRACT OF LAND, MORE OR LESS, BEING THE VOL. 5, PG. 73 C.C.M.R. TRACT, BLOCK 1, EL JARDON HEIGHTS ADDITION, ACCORDING TO THE PLAT THEREOF, THE SAME BEING PART OF THE EL JARDON HEIGHTS ADDITION, VOL. 5, PG. 48 C.C.M.R., PLAT THEREOF, EXCEPT THE PORTALES FLOOD ZONE 'A' AND 'C' ARE HEREIN DESIGNATED AS FLOOD ZONE 'A' AND 'C' AND THE PORTALES FLOOD ZONE 'B' IS HEREBY DEDICATED TO THE CITY OF PLANO FOR USE AS A PARK, AND THE PORTALES FLOOD ZONE 'D' IS HEREBY DEDICATED TO THE CITY OF PLANO FOR USE AS A PARK.

**NOTES:**

1. FLOOD ZONE 'A' IS DEFINED AS A FLOOD ZONE 'A' AS SHOWN ON THE PLAT OF THE EL JARDON HEIGHTS ADDITION, VOL. 5, PG. 73 C.C.M.R., AND FLOOD ZONE 'C' IS DEFINED AS A FLOOD ZONE 'C' AS SHOWN ON THE PLAT OF THE EL JARDON HEIGHTS ADDITION, VOL. 5, PG. 73 C.C.M.R., AND FLOOD ZONE 'D' IS DEFINED AS A FLOOD ZONE 'D' AS SHOWN ON THE PLAT OF THE EL JARDON HEIGHTS ADDITION, VOL. 5, PG. 73 C.C.M.R.
2. THE PORTALES FLOOD ZONE 'A' AND 'C' ARE HEREBY DEDICATED TO THE CITY OF PLANO FOR USE AS PARS AND THE PORTALES FLOOD ZONE 'B' IS HEREBY DEDICATED TO THE CITY OF PLANO FOR USE AS A PARK AND THE PORTALES FLOOD ZONE 'D' IS HEREBY DEDICATED TO THE CITY OF PLANO FOR USE AS A PARK.
3. THE PORTALES FLOOD ZONE 'A' AND 'C' ARE HEREBY DEDICATED TO THE CITY OF PLANO FOR USE AS PARS AND THE PORTALES FLOOD ZONE 'B' IS HEREBY DEDICATED TO THE CITY OF PLANO FOR USE AS A PARK AND THE PORTALES FLOOD ZONE 'D' IS HEREBY DEDICATED TO THE CITY OF PLANO FOR USE AS A PARK.
4. THE PORTALES FLOOD ZONE 'A' AND 'C' ARE HEREBY DEDICATED TO THE CITY OF PLANO FOR USE AS PARS AND THE PORTALES FLOOD ZONE 'B' IS HEREBY DEDICATED TO THE CITY OF PLANO FOR USE AS A PARK AND THE PORTALES FLOOD ZONE 'D' IS HEREBY DEDICATED TO THE CITY OF PLANO FOR USE AS A PARK.
5. THE PORTALES FLOOD ZONE 'A' AND 'C' ARE HEREBY DEDICATED TO THE CITY OF PLANO FOR USE AS PARS AND THE PORTALES FLOOD ZONE 'B' IS HEREBY DEDICATED TO THE CITY OF PLANO FOR USE AS A PARK AND THE PORTALES FLOOD ZONE 'D' IS HEREBY DEDICATED TO THE CITY OF PLANO FOR USE AS A PARK.



**ABRAHAM GALONSKI, TRUSTEE**  
ALL OF BLOCK 2  
EL JARDON SUBDIVISION  
1.1 ACRES TRACT  
(VOL. 3433, PG. 330 C.C.O.R.)

1. ALL RIGHTS AND INTERESTS SHALL BE CONVEYED TO THE CITY OF PLANO FOR USE AS PARS AND THE PORTALES FLOOD ZONE 'B' IS HEREBY DEDICATED TO THE CITY OF PLANO FOR USE AS A PARK AND THE PORTALES FLOOD ZONE 'D' IS HEREBY DEDICATED TO THE CITY OF PLANO FOR USE AS A PARK.

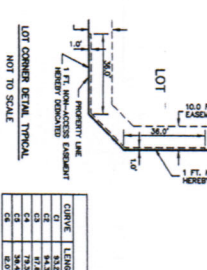
2. THE PORTALES FLOOD ZONE 'A' AND 'C' ARE HEREBY DEDICATED TO THE CITY OF PLANO FOR USE AS PARS AND THE PORTALES FLOOD ZONE 'B' IS HEREBY DEDICATED TO THE CITY OF PLANO FOR USE AS A PARK AND THE PORTALES FLOOD ZONE 'D' IS HEREBY DEDICATED TO THE CITY OF PLANO FOR USE AS A PARK.

**LEGEND**

- 1. 31' CONCRETE EASEMENT WITH AN OVER-ROAD CONCRETE EASEMENT (SEE PLAN)
- 2. ROAD CONCRETE EASEMENT (SEE PLAN)
- 3. ROAD SIDE SLOPE (SEE PLAN)
- 4. ROAD 1/2" SPALL (SEE PLAN)
- 5. ROAD 1/2" SPALL (SEE PLAN)
- 6. ROAD 1/2" SPALL (SEE PLAN)
- 7. ROAD 1/2" SPALL (SEE PLAN)
- 8. ROAD 1/2" SPALL (SEE PLAN)
- 9. ROAD 1/2" SPALL (SEE PLAN)
- 10. ROAD 1/2" SPALL (SEE PLAN)
- 11. ROAD 1/2" SPALL (SEE PLAN)
- 12. ROAD 1/2" SPALL (SEE PLAN)
- 13. ROAD 1/2" SPALL (SEE PLAN)
- 14. ROAD 1/2" SPALL (SEE PLAN)
- 15. ROAD 1/2" SPALL (SEE PLAN)
- 16. ROAD 1/2" SPALL (SEE PLAN)
- 17. ROAD 1/2" SPALL (SEE PLAN)
- 18. ROAD 1/2" SPALL (SEE PLAN)
- 19. ROAD 1/2" SPALL (SEE PLAN)
- 20. ROAD 1/2" SPALL (SEE PLAN)
- 21. ROAD 1/2" SPALL (SEE PLAN)
- 22. ROAD 1/2" SPALL (SEE PLAN)
- 23. ROAD 1/2" SPALL (SEE PLAN)
- 24. ROAD 1/2" SPALL (SEE PLAN)
- 25. ROAD 1/2" SPALL (SEE PLAN)
- 26. ROAD 1/2" SPALL (SEE PLAN)
- 27. ROAD 1/2" SPALL (SEE PLAN)
- 28. ROAD 1/2" SPALL (SEE PLAN)
- 29. ROAD 1/2" SPALL (SEE PLAN)
- 30. ROAD 1/2" SPALL (SEE PLAN)
- 31. ROAD 1/2" SPALL (SEE PLAN)
- 32. ROAD 1/2" SPALL (SEE PLAN)
- 33. ROAD 1/2" SPALL (SEE PLAN)
- 34. ROAD 1/2" SPALL (SEE PLAN)
- 35. ROAD 1/2" SPALL (SEE PLAN)
- 36. ROAD 1/2" SPALL (SEE PLAN)

**CURVE DATA TABLE**

LINE	CURVE	LENGTH	RADIUS	DEGREE	TANGENT
1	C	137.42	1000.00	18.43	42.43
2	C	137.42	1000.00	18.43	42.43
3	C	137.42	1000.00	18.43	42.43
4	C	137.42	1000.00	18.43	42.43
5	C	137.42	1000.00	18.43	42.43
6	C	137.42	1000.00	18.43	42.43
7	C	137.42	1000.00	18.43	42.43
8	C	137.42	1000.00	18.43	42.43
9	C	137.42	1000.00	18.43	42.43
10	C	137.42	1000.00	18.43	42.43
11	C	137.42	1000.00	18.43	42.43
12	C	137.42	1000.00	18.43	42.43
13	C	137.42	1000.00	18.43	42.43
14	C	137.42	1000.00	18.43	42.43
15	C	137.42	1000.00	18.43	42.43
16	C	137.42	1000.00	18.43	42.43
17	C	137.42	1000.00	18.43	42.43
18	C	137.42	1000.00	18.43	42.43
19	C	137.42	1000.00	18.43	42.43
20	C	137.42	1000.00	18.43	42.43
21	C	137.42	1000.00	18.43	42.43
22	C	137.42	1000.00	18.43	42.43
23	C	137.42	1000.00	18.43	42.43
24	C	137.42	1000.00	18.43	42.43
25	C	137.42	1000.00	18.43	42.43
26	C	137.42	1000.00	18.43	42.43
27	C	137.42	1000.00	18.43	42.43
28	C	137.42	1000.00	18.43	42.43
29	C	137.42	1000.00	18.43	42.43
30	C	137.42	1000.00	18.43	42.43
31	C	137.42	1000.00	18.43	42.43
32	C	137.42	1000.00	18.43	42.43
33	C	137.42	1000.00	18.43	42.43
34	C	137.42	1000.00	18.43	42.43
35	C	137.42	1000.00	18.43	42.43
36	C	137.42	1000.00	18.43	42.43



**LINE TABLE**

LINE	CURVE	LENGTH	RADIUS	DEGREE	TANGENT
1	C	137.42	1000.00	18.43	42.43
2	C	137.42	1000.00	18.43	42.43
3	C	137.42	1000.00	18.43	42.43
4	C	137.42	1000.00	18.43	42.43
5	C	137.42	1000.00	18.43	42.43
6	C	137.42	1000.00	18.43	42.43
7	C	137.42	1000.00	18.43	42.43
8	C	137.42	1000.00	18.43	42.43
9	C	137.42	1000.00	18.43	42.43
10	C	137.42	1000.00	18.43	42.43
11	C	137.42	1000.00	18.43	42.43
12	C	137.42	1000.00	18.43	42.43
13	C	137.42	1000.00	18.43	42.43
14	C	137.42	1000.00	18.43	42.43
15	C	137.42	1000.00	18.43	42.43
16	C	137.42	1000.00	18.43	42.43
17	C	137.42	1000.00	18.43	42.43
18	C	137.42	1000.00	18.43	42.43
19	C	137.42	1000.00	18.43	42.43
20	C	137.42	1000.00	18.43	42.43
21	C	137.42	1000.00	18.43	42.43
22	C	137.42	1000.00	18.43	42.43
23	C	137.42	1000.00	18.43	42.43
24	C	137.42	1000.00	18.43	42.43
25	C	137.42	1000.00	18.43	42.43
26	C	137.42	1000.00	18.43	42.43
27	C	137.42	1000.00	18.43	42.43
28	C	137.42	1000.00	18.43	42.43
29	C	137.42	1000.00	18.43	42.43
30	C	137.42	1000.00	18.43	42.43
31	C	137.42	1000.00	18.43	42.43
32	C	137.42	1000.00	18.43	42.43
33	C	137.42	1000.00	18.43	42.43
34	C	137.42	1000.00	18.43	42.43
35	C	137.42	1000.00	18.43	42.43
36	C	137.42	1000.00	18.43	42.43

**LOS PORTALES SUBDIVISION**

PLAT No. F-1879

TOTAL No. OF LOTS: 36

**LOS PORTALES, L.T.D.**

PREPARED FOR: ...

**LOS PORTALES, L.T.D.**

1800 W. HAWK CREEK BLVD., SUITE 100

PLANO, TEXAS 75075

TEL: 972.422.1000

FAX: 972.422.1001

**CENTRIQUE FOR COUNTY CLERK**

STATE OF TEXAS

PLANNING AND ZONING

1037 80

DATE: 8-9-06

BY: Dale Valdez

FOR: ...

**LEGEND**

- 1. 31' CONCRETE EASEMENT WITH AN OVER-ROAD CONCRETE EASEMENT (SEE PLAN)
- 2. ROAD CONCRETE EASEMENT (SEE PLAN)
- 3. ROAD SIDE SLOPE (SEE PLAN)
- 4. ROAD 1/2" SPALL (SEE PLAN)
- 5. ROAD 1/2" SPALL (SEE PLAN)
- 6. ROAD 1/2" SPALL (SEE PLAN)
- 7. ROAD 1/2" SPALL (SEE PLAN)
- 8. ROAD 1/2" SPALL (SEE PLAN)
- 9. ROAD 1/2" SPALL (SEE PLAN)
- 10. ROAD 1/2" SPALL (SEE PLAN)
- 11. ROAD 1/2" SPALL (SEE PLAN)
- 12. ROAD 1/2" SPALL (SEE PLAN)
- 13. ROAD 1/2" SPALL (SEE PLAN)
- 14. ROAD 1/2" SPALL (SEE PLAN)
- 15. ROAD 1/2" SPALL (SEE PLAN)
- 16. ROAD 1/2" SPALL (SEE PLAN)
- 17. ROAD 1/2" SPALL (SEE PLAN)
- 18. ROAD 1/2" SPALL (SEE PLAN)
- 19. ROAD 1/2" SPALL (SEE PLAN)
- 20. ROAD 1/2" SPALL (SEE PLAN)
- 21. ROAD 1/2" SPALL (SEE PLAN)
- 22. ROAD 1/2" SPALL (SEE PLAN)
- 23. ROAD 1/2" SPALL (SEE PLAN)
- 24. ROAD 1/2" SPALL (SEE PLAN)
- 25. ROAD 1/2" SPALL (SEE PLAN)
- 26. ROAD 1/2" SPALL (SEE PLAN)
- 27. ROAD 1/2" SPALL (SEE PLAN)
- 28. ROAD 1/2" SPALL (SEE PLAN)
- 29. ROAD 1/2" SPALL (SEE PLAN)
- 30. ROAD 1/2" SPALL (SEE PLAN)
- 31. ROAD 1/2" SPALL (SEE PLAN)
- 32. ROAD 1/2" SPALL (SEE PLAN)
- 33. ROAD 1/2" SPALL (SEE PLAN)
- 34. ROAD 1/2" SPALL (SEE PLAN)
- 35. ROAD 1/2" SPALL (SEE PLAN)
- 36. ROAD 1/2" SPALL (SEE PLAN)