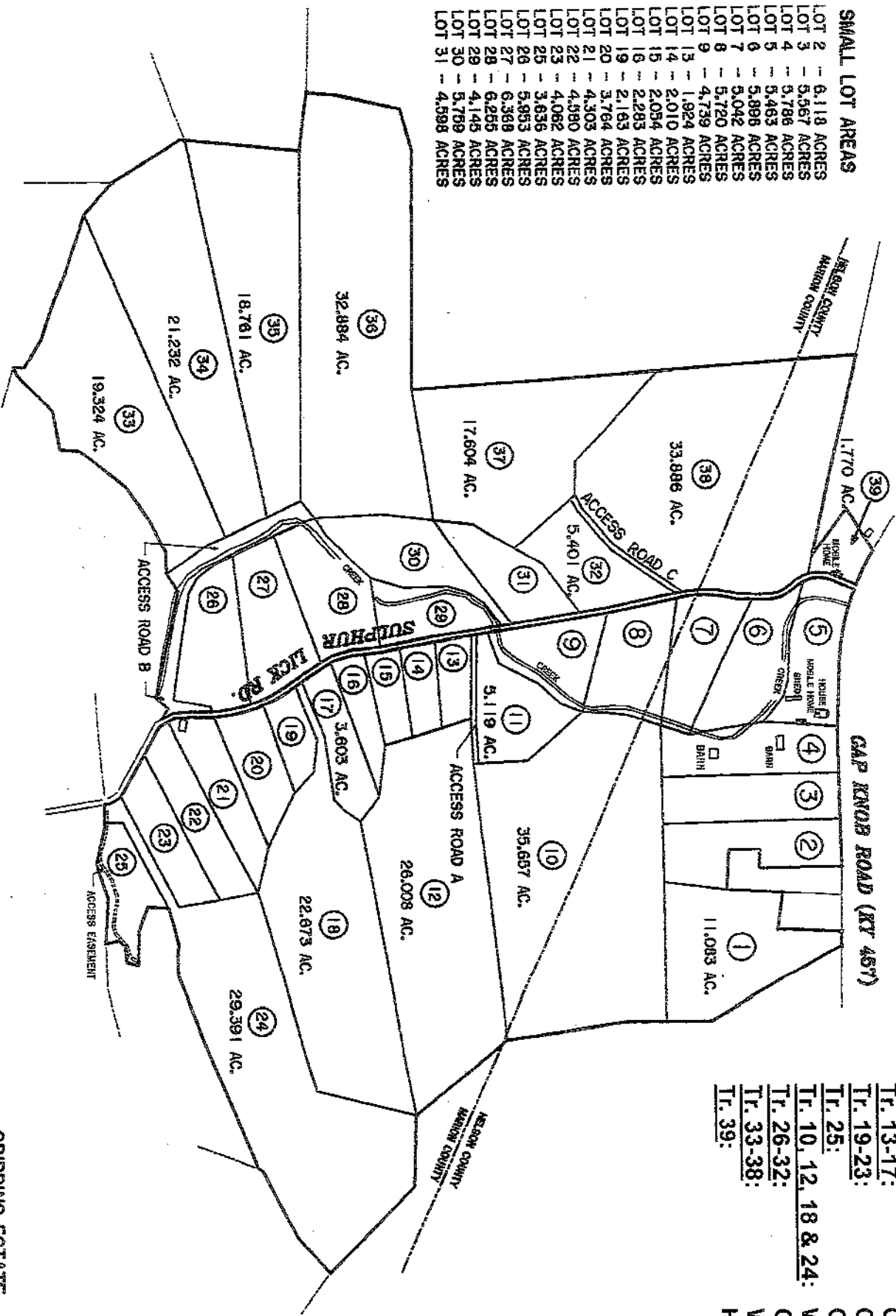


- Tr. 1: Mostly wooded/Home site
- Tr. 2-4: Mix of grassland and woodland/
Home sites
- Tr. 5: Historic home tract
- Tr. 6-9: Cropland
- Tr. 11: Cropland/Home site
- Tr. 13-17: Cropland/Home sites
- Tr. 19-23: Cropland/Home sites
- Tr. 25: Grassland/Home site
- Tr. 10, 12, 18 & 24: Woodland/Timberland/Home sites
- Tr. 26-32: Cropland/Home sites
- Tr. 33-38: Woodland/Timberland
- Tr. 39: Home site

SMALL LOT AREAS

LOT 2	--	6,118 ACRES
LOT 3	--	5,567 ACRES
LOT 4	--	5,786 ACRES
LOT 5	--	5,463 ACRES
LOT 6	--	5,888 ACRES
LOT 7	--	5,042 ACRES
LOT 8	--	5,720 ACRES
LOT 9	--	4,739 ACRES
LOT 13	--	1,924 ACRES
LOT 14	--	2,010 ACRES
LOT 15	--	2,034 ACRES
LOT 16	--	2,293 ACRES
LOT 19	--	2,163 ACRES
LOT 20	--	3,764 ACRES
LOT 21	--	4,303 ACRES
LOT 22	--	4,580 ACRES
LOT 23	--	4,082 ACRES
LOT 25	--	3,636 ACRES
LOT 26	--	5,853 ACRES
LOT 27	--	6,366 ACRES
LOT 28	--	6,255 ACRES
LOT 29	--	4,145 ACRES
LOT 30	--	5,789 ACRES
LOT 31	--	4,598 ACRES



TOTAL AREA OF TRACT - 397,312 ACRES

GRIBBINS ESTATE
SCALE: 1" = 600'