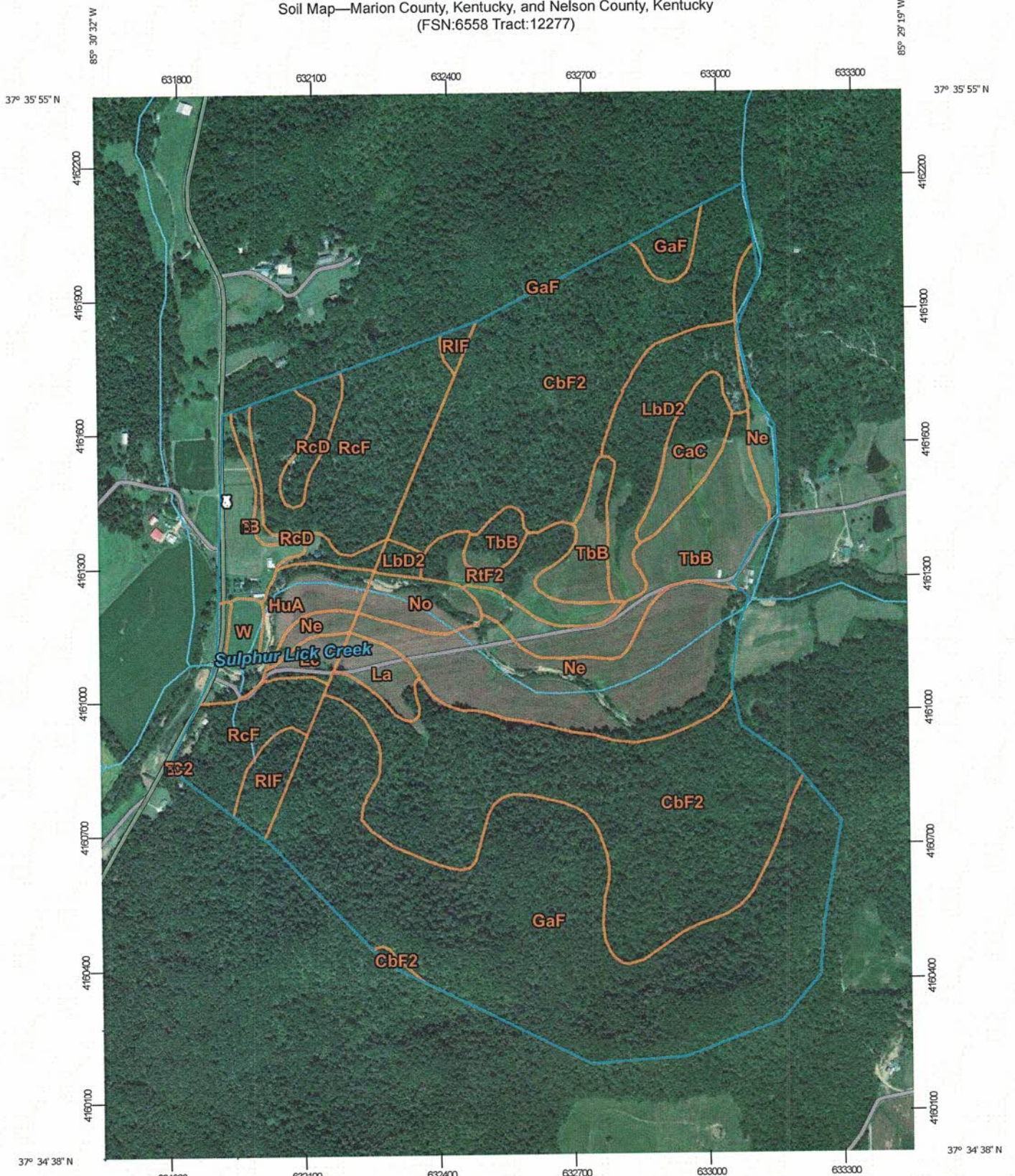
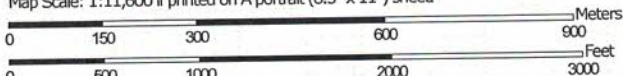


Soil Map—Marion County, Kentucky, and Nelson County, Kentucky  
(FSN:6558 Tract:12277)



Map Scale: 1:11,600 if printed on A portrait (8.5" x 11") sheet.



Map projection: Web Mercator Corner coordinates: WGS84 Edge tics: UTM Zone 16N WGS84



Natural Resources  
Conservation Service

Web Soil Survey  
National Cooperative Soil Survey

1/3/2018  
Page 1 of 4



## Map Unit Legend

Map Unit Symbol	Map Unit Name	Acres in AOI	Percent of AOI
CaC	Carpenter gravelly silt loam, 6 to 12 percent slopes	8.3	1.8%
CbF2	Carpenter-Lenberg complex, 20 to 45 percent slopes, eroded	144.0	30.4%
GaF	Garmon channery silt loam, 30 to 80 percent slopes, very rocky	115.4	24.4%
La	Lawrence silt loam, 0 to 2 percent slopes, rarely flooded	5.0	1.1%
LbD2	Lenberg silt loam, 12 to 20 percent slopes, eroded	20.9	4.4%
Ne	Newark silt loam, 0 to 2 percent slopes, frequently flooded	44.7	9.4%
No	Nolin silt loam, 0 to 2 percent slopes, frequently flooded	6.5	1.4%
RtF2	Rohan-Trappist complex, 20 to 50 percent slopes, eroded, very rocky	9.7	2.1%
TbB	Tilsit-Berea silt loams, 2 to 6 percent slopes	32.7	6.9%
<b>Subtotals for Soil Survey Area</b>		<b>387.3</b>	<b>81.9%</b>
<b>Totals for Area of Interest</b>		<b>472.8</b>	<b>100.0%</b>

Map Unit Symbol	Map Unit Name	Acres in AOI	Percent of AOI
BrB	Bedford silt loam, 2 to 6 percent slopes	8.6	1.8%
BrC2	Bedford silt loam, 6 to 12 percent slopes, eroded	0.1	0.0%
HuA	Huntington silt loam, 0 to 4 percent slopes	10.3	2.2%
Lc	Lawrence silt loam	3.0	0.6%
Ne	Newark silt loam, 0 to 2 percent slopes, frequently flooded	2.3	0.5%
RcD	Rockcastle silt loam, 12 to 20 percent slopes	8.9	1.9%
RcF	Rockcastle silt loam, 20 to 50 percent slopes	43.4	9.2%
RIF	Rockcastle-Weikert complex, 20 to 50 percent slopes	6.2	1.3%
W	Water	2.6	0.6%

