

Market Analysis By State: Texas

Property Type	Closed Sales*	YoY%	Dollar Volume	YoY%	Average Price	YoY%	Median Price	YoY%	Price/Sqft	YoY%	DOM	New Listings	Active Listings	Pending Sales	Months Inventory	Close To OLP
<b>All(New and Existing)</b>																
Residential (SF/COND/TH)	19,271	7.0%	\$7,631,668,586	10.1%	\$396,018	2.9%	\$325,000	1.9%	\$184	2.4%	64	39,719	94,922	25,749	3.5	93.7%
YTD:	19,271	7.0%	\$7,631,668,586	10.1%	\$396,018	2.9%	\$325,000	1.9%	\$184	2.4%	64	39,719	94,922	25,749		93.7%
Single Family	18,178	7.9%	\$7,263,460,520	10.5%	\$399,574	2.5%	\$328,000	2.5%	\$182	2.4%	65	36,635	87,885	24,292	3.4	93.7%
YTD:	18,178	7.9%	\$7,263,460,520	10.5%	\$399,574	2.5%	\$328,000	2.5%	\$182	2.4%	65	36,635	87,885	24,292		93.7%
Townhouse	508	1.2%	\$179,537,192	7.8%	\$353,420	6.6%	\$315,125	2.3%	\$191	2.8%	62	1,284	2,558	702	3.6	94.7%
YTD:	508	1.2%	\$179,537,192	7.8%	\$353,420	6.6%	\$315,125	2.3%	\$191	2.8%	62	1,284	2,558	702		94.7%
Condominium	570	-13.0%	\$184,031,462	-5.5%	\$322,862	8.6%	\$234,000	6.4%	\$254	7.1%	64	1,800	4,479	755	4.8	92.9%
YTD:	570	-13.0%	\$184,031,462	-5.5%	\$322,862	8.6%	\$234,000	6.4%	\$254	7.1%	64	1,800	4,479	755		92.9%
<b>Existing Home</b>																
Residential (SF/COND/TH)	14,250	5.3%	\$5,548,081,554	10.9%	\$389,339	5.4%	\$310,000	3.3%	\$183	4.2%	59	28,704	65,239	17,506	3.2	93.6%
YTD:	14,250	5.3%	\$5,548,081,554	10.9%	\$389,339	5.4%	\$310,000	3.3%	\$183	4.2%	59	28,704	65,239	17,506		93.6%
Single Family	13,307	6.1%	\$5,243,131,871	11.5%	\$394,013	5.1%	\$315,000	3.8%	\$180	4.2%	59	26,215	59,714	16,286	3.1	93.6%
YTD:	13,307	6.1%	\$5,243,131,871	11.5%	\$394,013	5.1%	\$315,000	3.8%	\$180	4.2%	59	26,215	59,714	16,286		93.6%
Townhouse	385	1.6%	\$130,216,620	8.3%	\$338,225	6.6%	\$291,250	2.2%	\$184	4.0%	55	896	1,665	509	3.1	94.7%
YTD:	385	1.6%	\$130,216,620	8.3%	\$338,225	6.6%	\$291,250	2.2%	\$184	4.0%	55	896	1,665	509		94.7%
Condominium	541	-12.9%	\$169,325,817	-5.0%	\$312,987	9.0%	\$230,000	8.4%	\$252	8.7%	64	1,593	3,860	711	4.4	93.0%
YTD:	541	-12.9%	\$169,325,817	-5.0%	\$312,987	9.0%	\$230,000	8.4%	\$252	8.7%	64	1,593	3,860	711		93.0%
<b>New Construction</b>																
Residential (SF/COND/TH)	5,020	12.3%	\$2,083,769,797	7.8%	\$415,094	-4.0%	\$356,830	-0.9%	\$187	-2.7%	79	11,015	29,683	8,243	4.3	94.1%
YTD:	5,020	12.3%	\$2,083,769,797	7.8%	\$415,094	-4.0%	\$356,830	-0.9%	\$187	-2.7%	79	11,015	29,683	8,243		94.1%
Single Family	4,866	12.9%	\$2,018,777,483	8.0%	\$414,874	-4.3%	\$355,990	-1.0%	\$185	-2.5%	79	10,420	28,171	8,006	4.2	94.1%
YTD:	4,866	12.9%	\$2,018,777,483	8.0%	\$414,874	-4.3%	\$355,990	-1.0%	\$185	-2.5%	79	10,420	28,171	8,006		94.1%
Townhouse	121	-1.6%	\$48,622,232	5.1%	\$401,837	6.8%	\$361,905	0.8%	\$213	0.2%	85	388	893	193	5.0	94.6%
YTD:	121	-1.6%	\$48,622,232	5.1%	\$401,837	6.8%	\$361,905	0.8%	\$213	0.2%	85	388	893	193		94.6%
Condominium	29	-14.7%	\$14,702,119	-10.1%	\$506,970	5.4%	\$486,920	20.2%	\$296	-12.0%	69	207	619	44	10.2	91.5%
YTD:	29	-14.7%	\$14,702,119	-10.1%	\$506,970	5.4%	\$486,920	20.2%	\$296	-12.0%	69	207	619	44		91.5%

\* Closed Sale counts for most recent 3 months are Preliminary.

Trend Analysis By State: Texas

Residential, All (New and Existing)



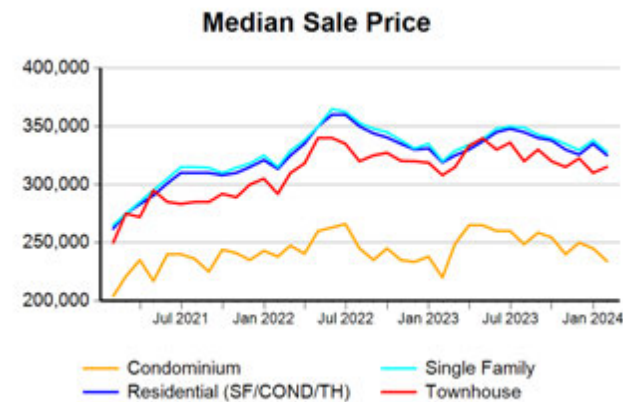
Single Family, New vs. Existing



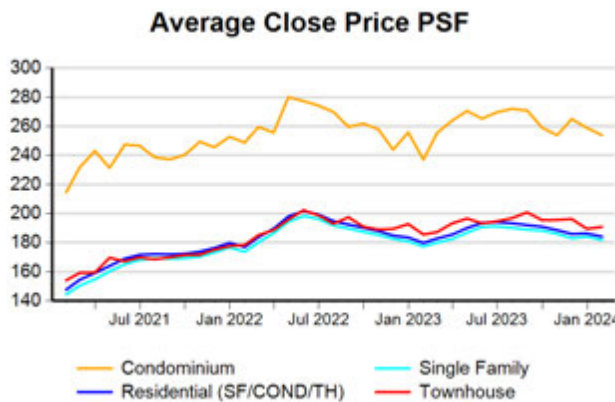
COND/TH, All (New and Existing)



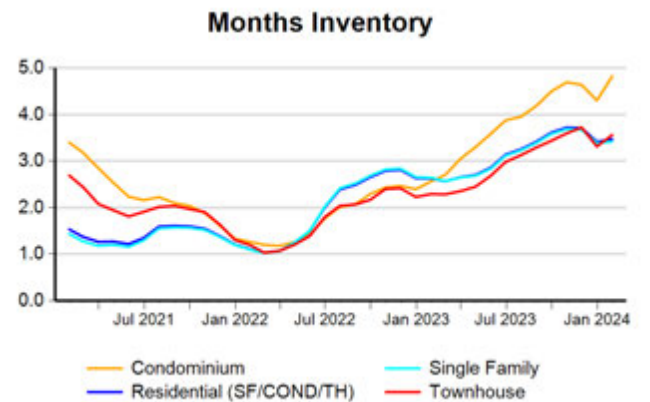
All (New and Existing) Construction



All (New and Existing) Construction



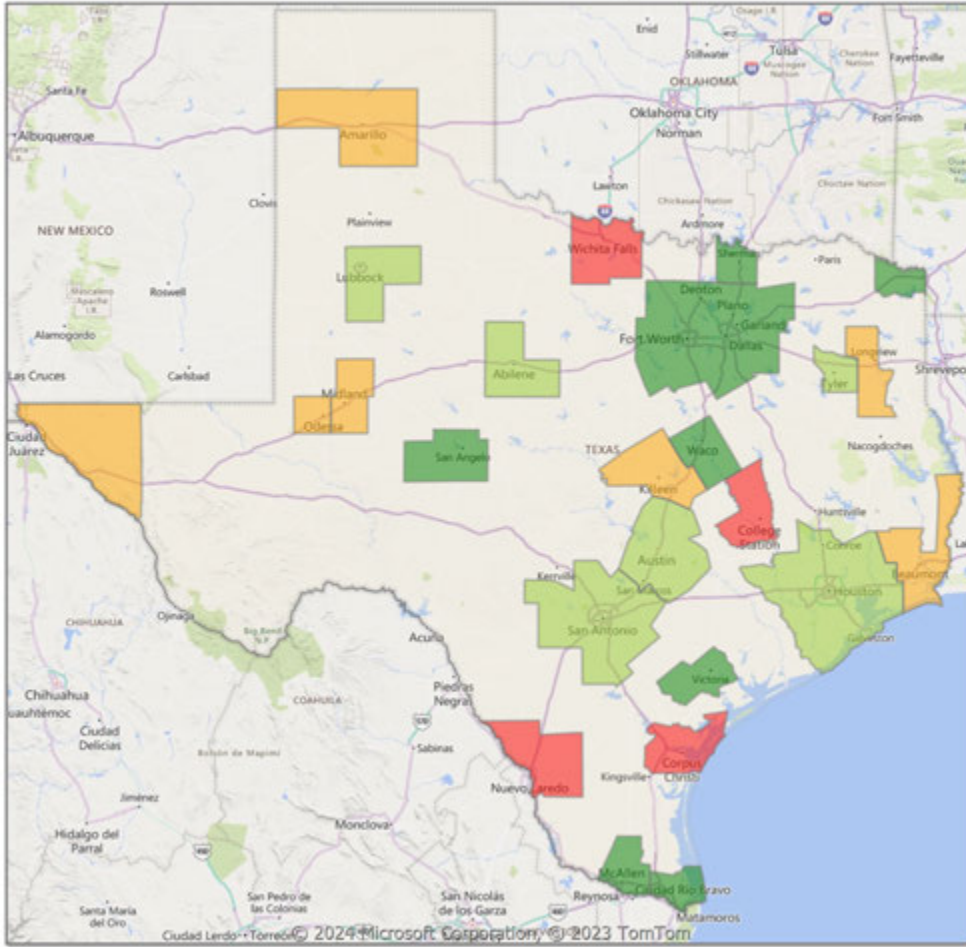
All (New and Existing) Construction



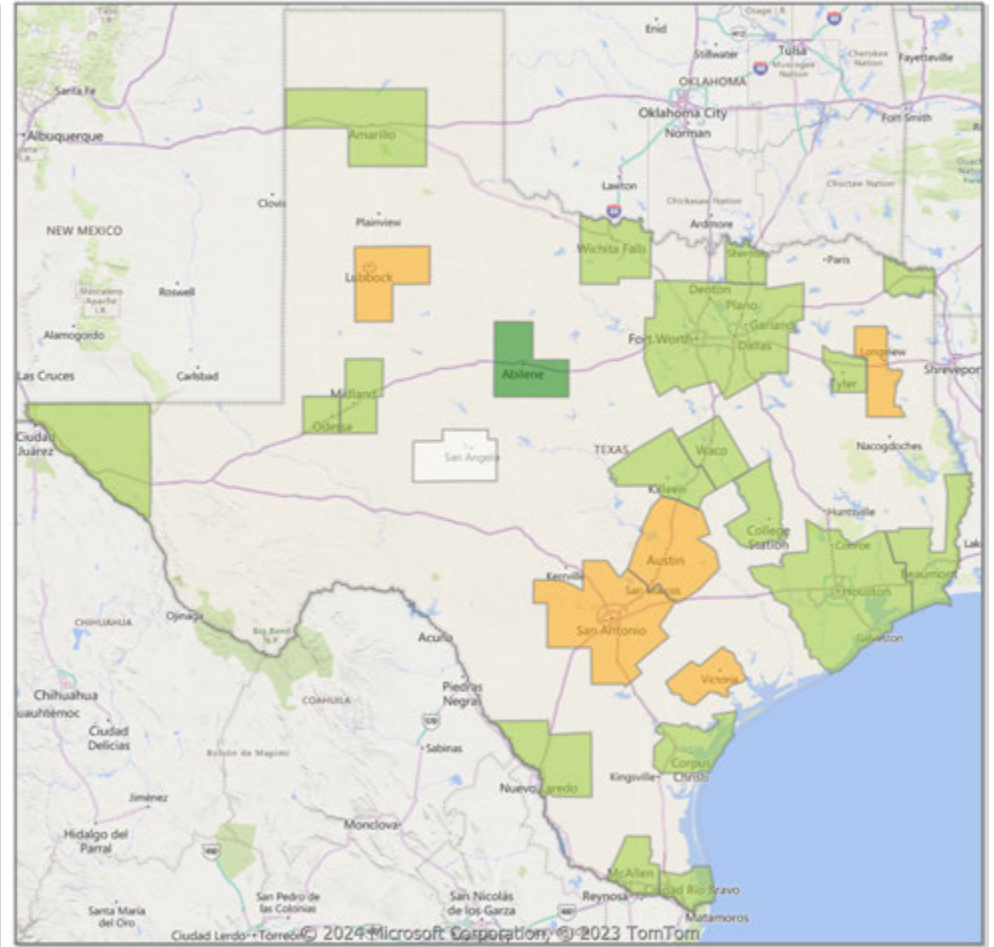
\* Closed Sale counts for most recent 3 months are Preliminary.

**Comparison By Metropolitan Statistical Area in Texas**

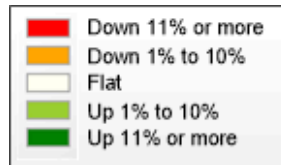
**Residential\* Closed Sales YoY Percentage Change**



**Residential\* Avg Close Price Per SqFt YoY Percentage Change**

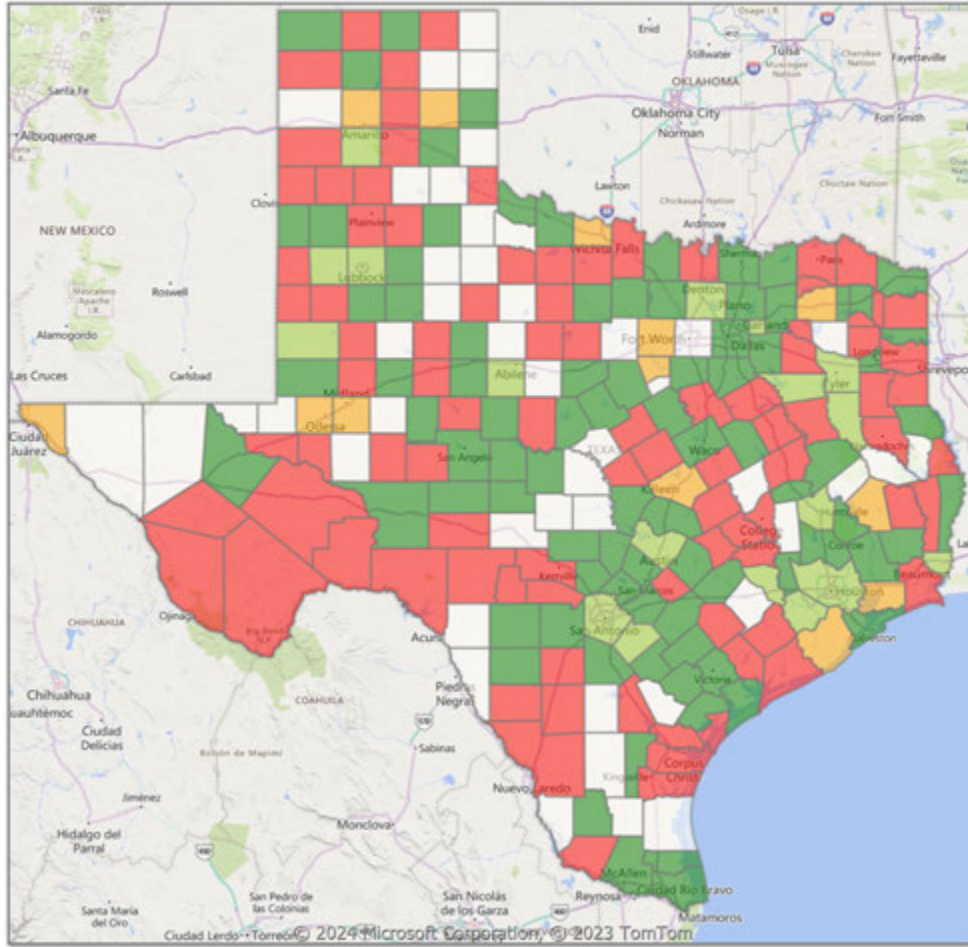


\* Residential includes Single Family, Condominium and Townhouse.

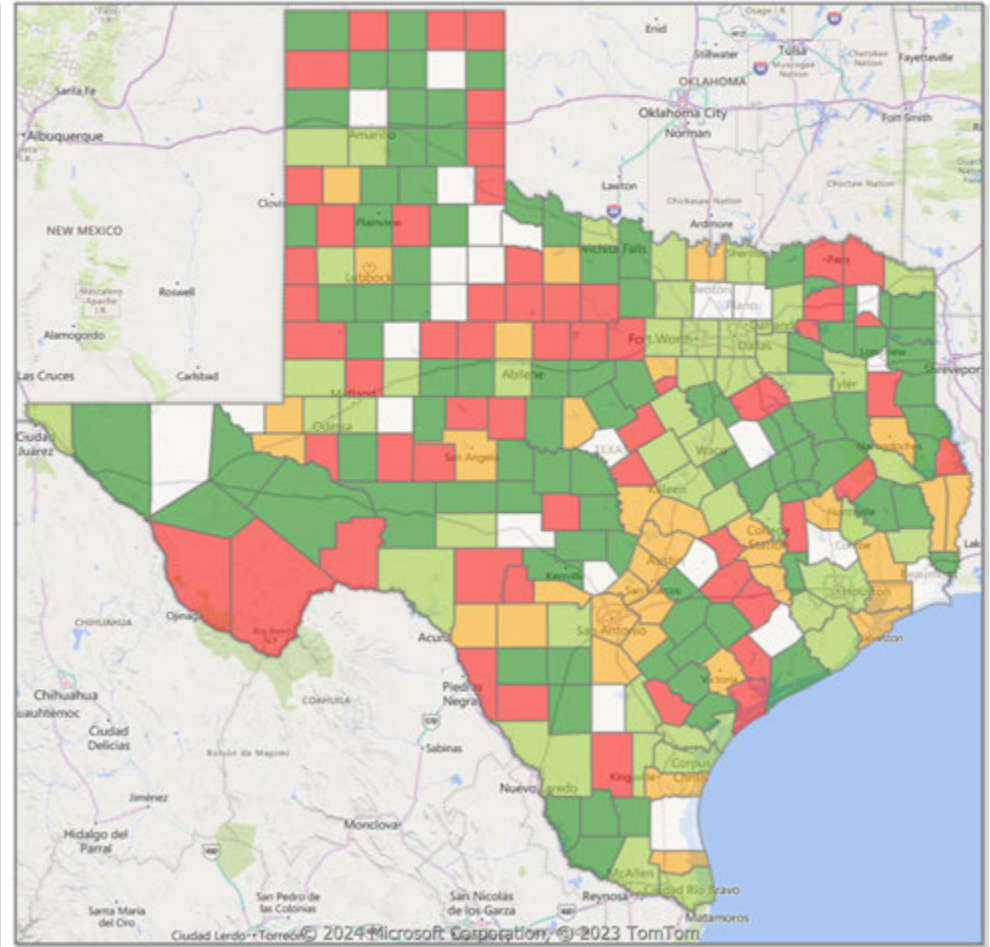


**Comparison By County in Texas**

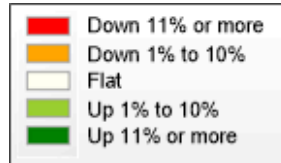
**Residential\* Closed Sales  
YoY Percentage Change**



**Residential\* Avg Close Price Per SqFt  
YoY Percentage Change**



\* Residential includes Single Family, Condominium and Townhouse.



Market Analysis By County: Blanco County

Property Type	Closed Sales*	YoY%	Dollar Volume	YoY%	Average Price	YoY%	Median Price	YoY%	Price/Sqft	YoY%	DOM	New Listings	Active Listings	Pending Sales	Months Inventory	Close To OLP
<b>All(New and Existing)</b>																
Residential (SF/COND/TH)	13	18.2%	\$8,413,167	58.0%	\$647,167	33.7%	\$492,500	5.9%	\$792	182.6%	48	31	147	13	10.7	96.7%
YTD:	13	18.2%	\$8,413,167	58.0%	\$647,167	33.7%	\$492,500	5.9%	\$792	182.6%	48	31	147	13		96.7%
Single Family	13	18.2%	\$8,413,167	58.0%	\$647,167	33.7%	\$492,500	5.9%	\$792	182.6%	48	30	146	13	10.6	96.7%
YTD:	13	18.2%	\$8,413,167	58.0%	\$647,167	33.7%	\$492,500	5.9%	\$792	182.6%	48	30	146	13		96.7%
Townhouse	-	0.0%	-	0.0%	-	0.0%	-	0.0%	-	0.0%	-	-	-	-	-	0.0%
YTD:	-	0.0%	-	0.0%	-	0.0%	-	0.0%	-	0.0%	-	-	-	-	-	0.0%
Condominium	-	0.0%	-	0.0%	-	0.0%	-	0.0%	-	0.0%	-	1	1	-	-	0.0%
YTD:	-	0.0%	-	0.0%	-	0.0%	-	0.0%	-	0.0%	-	1	1	-	-	0.0%
<b>Existing Home</b>																
Residential (SF/COND/TH)	8	-20.0%	\$6,196,571	28.4%	\$774,571	60.5%	\$515,000	33.4%	\$1,108	289.8%	35	15	80	10	9.2	95.7%
YTD:	8	-20.0%	\$6,196,571	28.4%	\$774,571	60.5%	\$515,000	33.4%	\$1,108	289.8%	35	15	80	10		95.7%
Single Family	8	-20.0%	\$6,196,571	28.4%	\$774,571	60.5%	\$515,000	33.4%	\$1,108	289.8%	35	14	79	10	9.1	95.7%
YTD:	8	-20.0%	\$6,196,571	28.4%	\$774,571	60.5%	\$515,000	33.4%	\$1,108	289.8%	35	14	79	10		95.7%
Townhouse	-	0.0%	-	0.0%	-	0.0%	-	0.0%	-	0.0%	-	-	-	-	-	0.0%
YTD:	-	0.0%	-	0.0%	-	0.0%	-	0.0%	-	0.0%	-	-	-	-	-	0.0%
Condominium	-	0.0%	-	0.0%	-	0.0%	-	0.0%	-	0.0%	-	1	1	-	-	0.0%
YTD:	-	0.0%	-	0.0%	-	0.0%	-	0.0%	-	0.0%	-	1	1	-	-	0.0%
<b>New Construction</b>																
Residential (SF/COND/TH)	5	400.0%	\$2,344,000	369.7%	\$468,800	-6.1%	\$465,000	-6.8%	\$240	-0.4%	65	16	67	3	13.2	98.0%
YTD:	5	400.0%	\$2,344,000	369.7%	\$468,800	-6.1%	\$465,000	-6.8%	\$240	-0.4%	65	16	67	3		98.0%
Single Family	5	400.0%	\$2,344,000	369.7%	\$468,800	-6.1%	\$465,000	-6.8%	\$240	-0.4%	65	16	67	3	13.2	98.0%
YTD:	5	400.0%	\$2,344,000	369.7%	\$468,800	-6.1%	\$465,000	-6.8%	\$240	-0.4%	65	16	67	3		98.0%
Townhouse	-	0.0%	-	0.0%	-	0.0%	-	0.0%	-	0.0%	-	-	-	-	-	0.0%
YTD:	-	0.0%	-	0.0%	-	0.0%	-	0.0%	-	0.0%	-	-	-	-	-	0.0%
Condominium	-	0.0%	-	0.0%	-	0.0%	-	0.0%	-	0.0%	-	-	-	-	-	0.0%
YTD:	-	0.0%	-	0.0%	-	0.0%	-	0.0%	-	0.0%	-	-	-	-	-	0.0%

\* Closed Sale counts for most recent 3 months are Preliminary.



Market Analysis By County: Gillespie County

Property Type	Closed Sales*	YoY%	Dollar Volume	YoY%	Average Price	YoY%	Median Price	YoY%	Price/Sqft	YoY%	DOM	New Listings	Active Listings	Pending Sales	Months Inventory	Close To OLP
<b>All(New and Existing)</b>																
Residential (SF/COND/TH)	22	22.2%	\$13,607,893	0.2%	\$618,541	-18.1%	\$525,000	-16.7%	\$373	16.7%	99	70	281	24	9.2	94.6%
YTD:	22	22.2%	\$13,607,893	0.2%	\$618,541	-18.1%	\$525,000	-16.7%	\$373	16.7%	99	70	281	24		94.6%
Single Family	22	22.2%	\$13,607,893	0.2%	\$618,541	-18.1%	\$525,000	-16.7%	\$373	16.7%	99	62	259	24	8.6	94.6%
YTD:	22	22.2%	\$13,607,893	0.2%	\$618,541	-18.1%	\$525,000	-16.7%	\$373	16.7%	99	62	259	24		94.6%
Townhouse	-	0.0%	-	0.0%	-	0.0%	-	0.0%	-	0.0%	-	-	-	-	-	0.0%
YTD:	-	0.0%	-	0.0%	-	0.0%	-	0.0%	-	0.0%	-	-	-	-	-	0.0%
Condominium	-	0.0%	-	0.0%	-	0.0%	-	0.0%	-	0.0%	-	8	22	-	264.0	0.0%
YTD:	-	0.0%	-	0.0%	-	0.0%	-	0.0%	-	0.0%	-	8	22	-		0.0%
<b>Existing Home</b>																
Residential (SF/COND/TH)	20	42.9%	\$12,660,421	15.3%	\$633,021	-19.3%	\$540,000	-23.9%	\$384	17.5%	101	48	232	18	9.0	94.2%
YTD:	20	42.9%	\$12,660,421	15.3%	\$633,021	-19.3%	\$540,000	-23.9%	\$384	17.5%	101	48	232	18		94.2%
Single Family	20	42.9%	\$12,660,421	15.3%	\$633,021	-19.3%	\$540,000	-23.9%	\$384	17.5%	101	46	217	18	8.6	94.2%
YTD:	20	42.9%	\$12,660,421	15.3%	\$633,021	-19.3%	\$540,000	-23.9%	\$384	17.5%	101	46	217	18		94.2%
Townhouse	-	0.0%	-	0.0%	-	0.0%	-	0.0%	-	0.0%	-	-	-	-	-	0.0%
YTD:	-	0.0%	-	0.0%	-	0.0%	-	0.0%	-	0.0%	-	-	-	-	-	0.0%
Condominium	-	0.0%	-	0.0%	-	0.0%	-	0.0%	-	0.0%	-	2	15	-	180.0	0.0%
YTD:	-	0.0%	-	0.0%	-	0.0%	-	0.0%	-	0.0%	-	2	15	-		0.0%
<b>New Construction</b>																
Residential (SF/COND/TH)	2	-50.0%	\$961,952	-63.1%	\$480,976	-26.3%	\$480,976	-11.7%	\$274	-7.5%	85	22	49	6	10.0	98.2%
YTD:	2	-50.0%	\$961,952	-63.1%	\$480,976	-26.3%	\$480,976	-11.7%	\$274	-7.5%	85	22	49	6		98.2%
Single Family	2	-50.0%	\$961,952	-63.1%	\$480,976	-26.3%	\$480,976	-11.7%	\$274	-7.5%	85	16	42	6	8.5	98.2%
YTD:	2	-50.0%	\$961,952	-63.1%	\$480,976	-26.3%	\$480,976	-11.7%	\$274	-7.5%	85	16	42	6		98.2%
Townhouse	-	0.0%	-	0.0%	-	0.0%	-	0.0%	-	0.0%	-	-	-	-	-	0.0%
YTD:	-	0.0%	-	0.0%	-	0.0%	-	0.0%	-	0.0%	-	-	-	-	-	0.0%
Condominium	-	0.0%	-	0.0%	-	0.0%	-	0.0%	-	0.0%	-	6	7	-	-	0.0%
YTD:	-	0.0%	-	0.0%	-	0.0%	-	0.0%	-	0.0%	-	6	7	-		0.0%

\* Closed Sale counts for most recent 3 months are Preliminary.

Market Analysis By County: Kimble County

Property Type	Closed Sales*	YoY%	Dollar Volume	YoY%	Average Price	YoY%	Median Price	YoY%	Price/Sqft	YoY%	DOM	New Listings	Active Listings	Pending Sales	Months Inventory	Close To OLP
<b>All(New and Existing)</b>																
Residential (SF/COND/TH)	-	0.0%	-	0.0%	-	0.0%	-	0.0%	-	0.0%	-	2	14	-	16.8	0.0%
YTD:	-	0.0%	-	0.0%	-	0.0%	-	0.0%	-	0.0%	-	2	14	-		0.0%
Single Family	-	0.0%	-	0.0%	-	0.0%	-	0.0%	-	0.0%	-	2	14	-	16.8	0.0%
YTD:	-	0.0%	-	0.0%	-	0.0%	-	0.0%	-	0.0%	-	2	14	-		0.0%
Townhouse	-	0.0%	-	0.0%	-	0.0%	-	0.0%	-	0.0%	-	-	-	-	-	0.0%
YTD:	-	0.0%	-	0.0%	-	0.0%	-	0.0%	-	0.0%	-	-	-	-	-	0.0%
Condominium	-	0.0%	-	0.0%	-	0.0%	-	0.0%	-	0.0%	-	-	-	-	-	0.0%
YTD:	-	0.0%	-	0.0%	-	0.0%	-	0.0%	-	0.0%	-	-	-	-	-	0.0%
<b>Existing Home</b>																
Residential (SF/COND/TH)	-	0.0%	-	0.0%	-	0.0%	-	0.0%	-	0.0%	-	2	13	-	17.3	0.0%
YTD:	-	0.0%	-	0.0%	-	0.0%	-	0.0%	-	0.0%	-	2	13	-		0.0%
Single Family	-	0.0%	-	0.0%	-	0.0%	-	0.0%	-	0.0%	-	2	13	-	17.3	0.0%
YTD:	-	0.0%	-	0.0%	-	0.0%	-	0.0%	-	0.0%	-	2	13	-		0.0%
Townhouse	-	0.0%	-	0.0%	-	0.0%	-	0.0%	-	0.0%	-	-	-	-	-	0.0%
YTD:	-	0.0%	-	0.0%	-	0.0%	-	0.0%	-	0.0%	-	-	-	-	-	0.0%
Condominium	-	0.0%	-	0.0%	-	0.0%	-	0.0%	-	0.0%	-	-	-	-	-	0.0%
YTD:	-	0.0%	-	0.0%	-	0.0%	-	0.0%	-	0.0%	-	-	-	-	-	0.0%
<b>New Construction</b>																
Residential (SF/COND/TH)	-	0.0%	-	0.0%	-	0.0%	-	0.0%	-	0.0%	-	-	1	-	12.0	0.0%
YTD:	-	0.0%	-	0.0%	-	0.0%	-	0.0%	-	0.0%	-	-	1	-		0.0%
Single Family	-	0.0%	-	0.0%	-	0.0%	-	0.0%	-	0.0%	-	-	1	-	12.0	0.0%
YTD:	-	0.0%	-	0.0%	-	0.0%	-	0.0%	-	0.0%	-	-	1	-		0.0%
Townhouse	-	0.0%	-	0.0%	-	0.0%	-	0.0%	-	0.0%	-	-	-	-	-	0.0%
YTD:	-	0.0%	-	0.0%	-	0.0%	-	0.0%	-	0.0%	-	-	-	-	-	0.0%
Condominium	-	0.0%	-	0.0%	-	0.0%	-	0.0%	-	0.0%	-	-	-	-	-	0.0%
YTD:	-	0.0%	-	0.0%	-	0.0%	-	0.0%	-	0.0%	-	-	-	-	-	0.0%

\* Closed Sale counts for most recent 3 months are Preliminary.

Market Analysis By County: Mason County

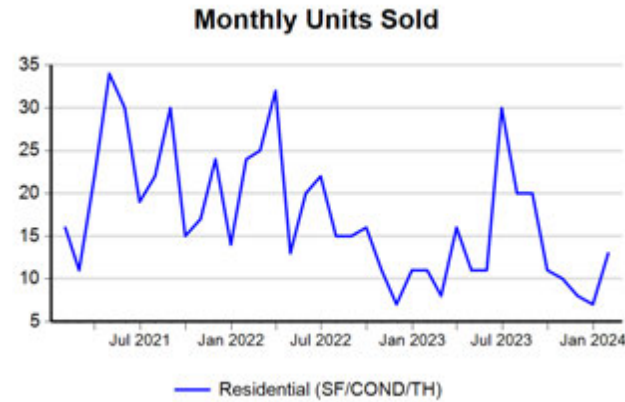
Property Type	Closed Sales*	YoY%	Dollar Volume	YoY%	Average Price	YoY%	Median Price	YoY%	Price/Sqft	YoY%	DOM	New Listings	Active Listings	Pending Sales	Months Inventory	Close To OLP
<b>All(New and Existing)</b>																
Residential (SF/COND/TH)	1	0.0%	\$295,000	-22.0%	\$295,000	-22.0%	\$295,000	-22.0%	\$175	-24.6%	42	1	20	1	7.7	100.0%
YTD:	1	0.0%	\$295,000	-22.0%	\$295,000	-22.0%	\$295,000	-22.0%	\$175	-24.6%	42	1	20	1		100.0%
Single Family	1	0.0%	\$295,000	-22.0%	\$295,000	-22.0%	\$295,000	-22.0%	\$175	-24.6%	42	1	20	1	7.7	100.0%
YTD:	1	0.0%	\$295,000	-22.0%	\$295,000	-22.0%	\$295,000	-22.0%	\$175	-24.6%	42	1	20	1		100.0%
Townhouse	-	0.0%	-	0.0%	-	0.0%	-	0.0%	-	0.0%	-	-	-	-	-	0.0%
YTD:	-	0.0%	-	0.0%	-	0.0%	-	0.0%	-	0.0%	-	-	-	-	-	0.0%
Condominium	-	0.0%	-	0.0%	-	0.0%	-	0.0%	-	0.0%	-	-	-	-	-	0.0%
YTD:	-	0.0%	-	0.0%	-	0.0%	-	0.0%	-	0.0%	-	-	-	-	-	0.0%
<b>Existing Home</b>																
Residential (SF/COND/TH)	1	0.0%	\$295,000	-22.0%	\$295,000	-22.0%	\$295,000	-22.0%	\$175	-24.6%	42	1	19	1	7.4	100.0%
YTD:	1	0.0%	\$295,000	-22.0%	\$295,000	-22.0%	\$295,000	-22.0%	\$175	-24.6%	42	1	19	1		100.0%
Single Family	1	0.0%	\$295,000	-22.0%	\$295,000	-22.0%	\$295,000	-22.0%	\$175	-24.6%	42	1	19	1	7.4	100.0%
YTD:	1	0.0%	\$295,000	-22.0%	\$295,000	-22.0%	\$295,000	-22.0%	\$175	-24.6%	42	1	19	1		100.0%
Townhouse	-	0.0%	-	0.0%	-	0.0%	-	0.0%	-	0.0%	-	-	-	-	-	0.0%
YTD:	-	0.0%	-	0.0%	-	0.0%	-	0.0%	-	0.0%	-	-	-	-	-	0.0%
Condominium	-	0.0%	-	0.0%	-	0.0%	-	0.0%	-	0.0%	-	-	-	-	-	0.0%
YTD:	-	0.0%	-	0.0%	-	0.0%	-	0.0%	-	0.0%	-	-	-	-	-	0.0%
<b>New Construction</b>																
Residential (SF/COND/TH)	-	0.0%	-	0.0%	-	0.0%	-	0.0%	-	0.0%	-	-	1	-	-	0.0%
YTD:	-	0.0%	-	0.0%	-	0.0%	-	0.0%	-	0.0%	-	-	1	-		0.0%
Single Family	-	0.0%	-	0.0%	-	0.0%	-	0.0%	-	0.0%	-	-	1	-	-	0.0%
YTD:	-	0.0%	-	0.0%	-	0.0%	-	0.0%	-	0.0%	-	-	1	-		0.0%
Townhouse	-	0.0%	-	0.0%	-	0.0%	-	0.0%	-	0.0%	-	-	-	-	-	0.0%
YTD:	-	0.0%	-	0.0%	-	0.0%	-	0.0%	-	0.0%	-	-	-	-	-	0.0%
Condominium	-	0.0%	-	0.0%	-	0.0%	-	0.0%	-	0.0%	-	-	-	-	-	0.0%
YTD:	-	0.0%	-	0.0%	-	0.0%	-	0.0%	-	0.0%	-	-	-	-	-	0.0%

\* Closed Sale counts for most recent 3 months are Preliminary.



Trend Analysis By County: Blanco County

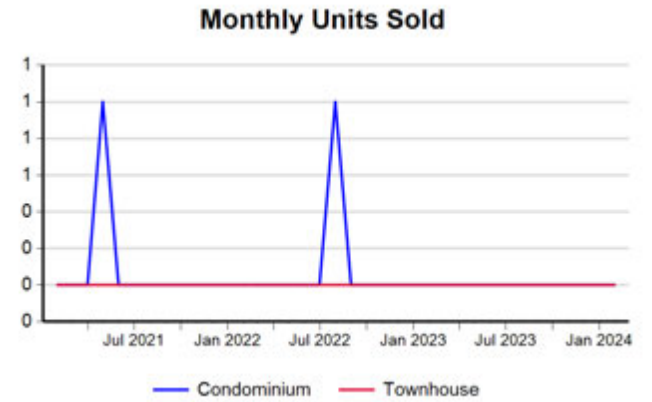
**Residential, All (New and Existing)**



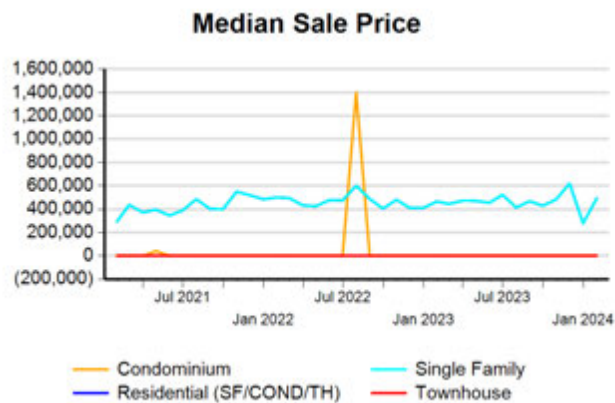
**Single Family, New vs. Existing**



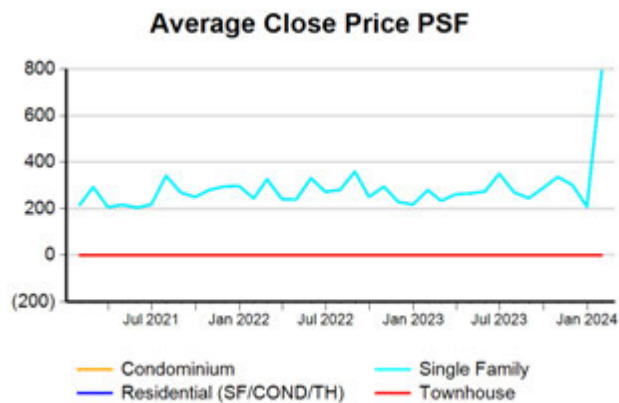
**COND/TH, All (New and Existing)**



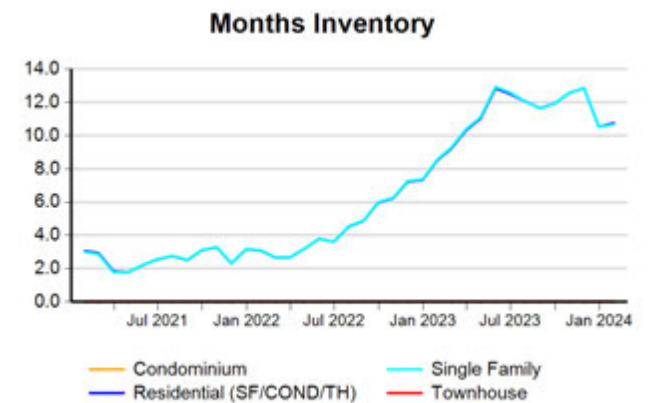
**All (New and Existing) Construction**



**All (New and Existing) Construction**



**All (New and Existing) Construction**



\* Closed Sale counts for most recent 3 months are Preliminary.

Trend Analysis By County: Gillespie County

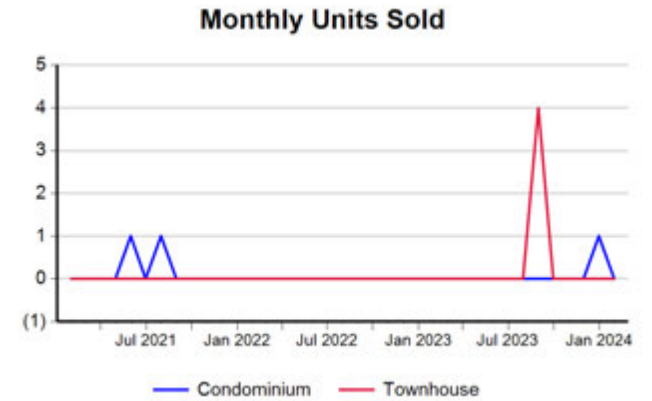
Residential, All (New and Existing)



Single Family, New vs. Existing



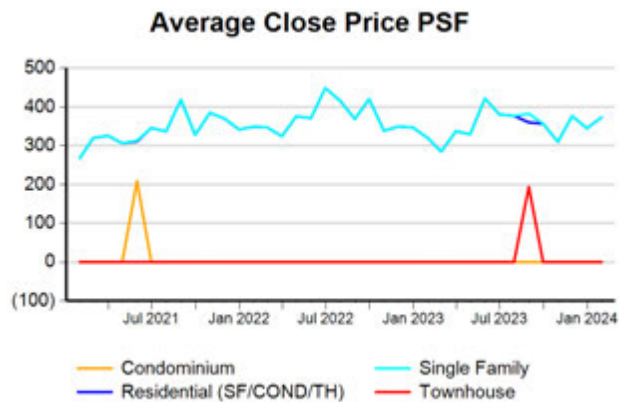
COND/TH, All (New and Existing)



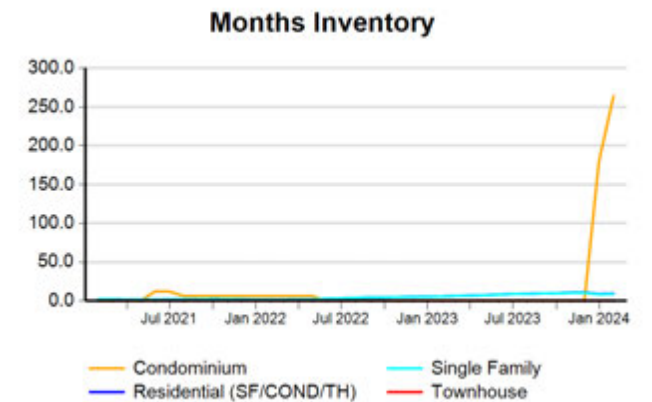
All (New and Existing) Construction



All (New and Existing) Construction



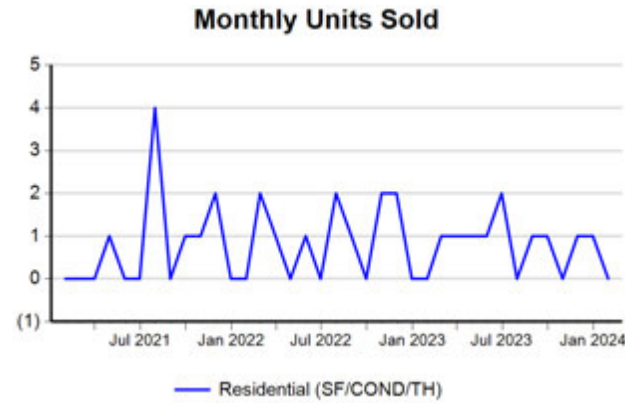
All (New and Existing) Construction



\* Closed Sale counts for most recent 3 months are Preliminary.

Trend Analysis By County: Kimble County

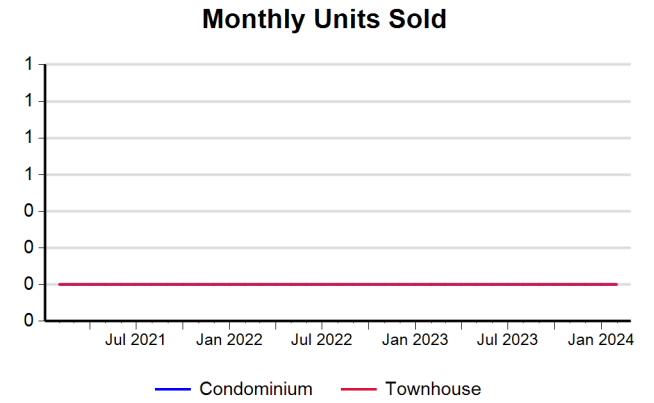
Residential, All (New and Existing)



Single Family, New vs. Existing



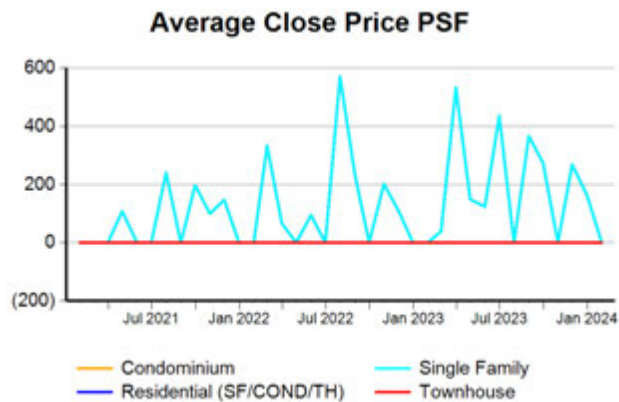
COND/TH, All (New and Existing)



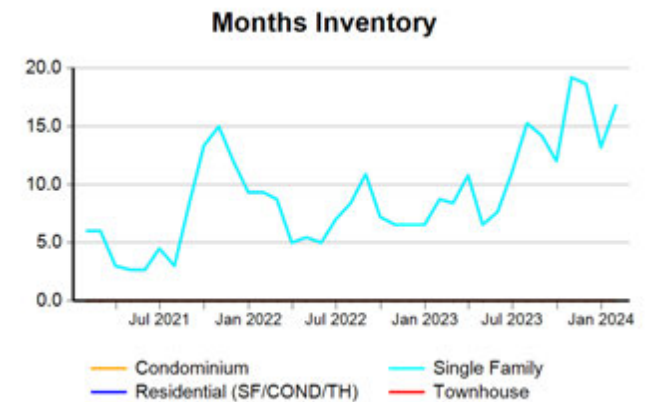
All (New and Existing) Construction



All (New and Existing) Construction



All (New and Existing) Construction



\* Closed Sale counts for most recent 3 months are Preliminary.

Trend Analysis By County: Mason County

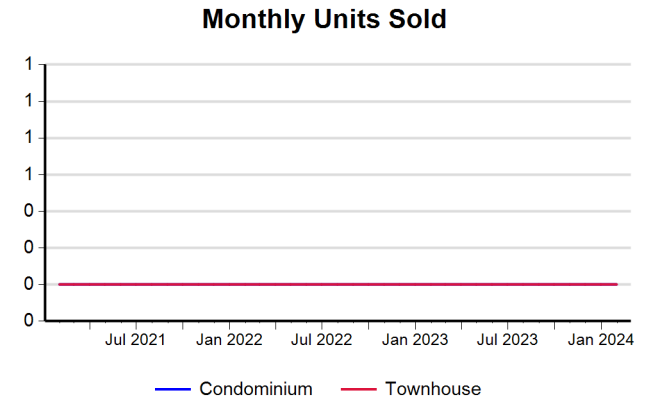
Residential, All (New and Existing)



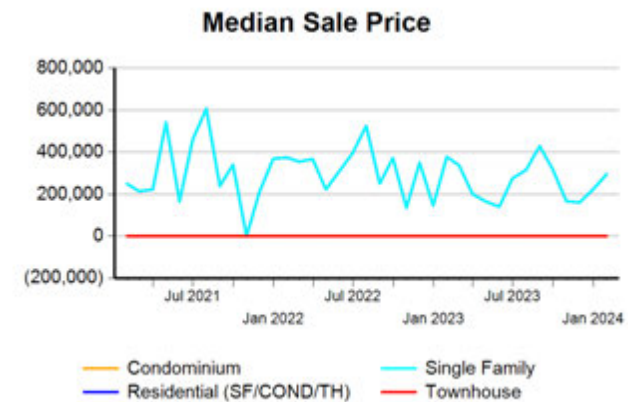
Single Family, New vs. Existing



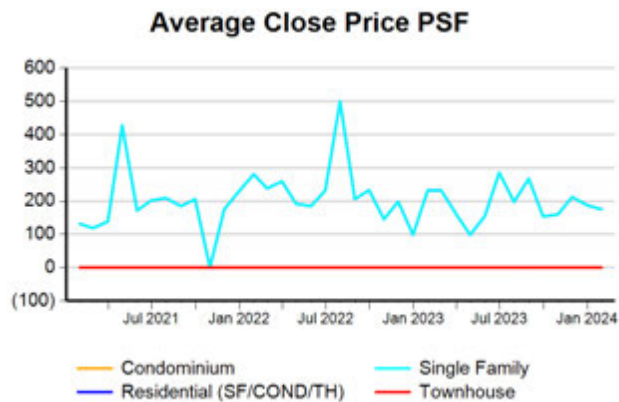
COND/TH, All (New and Existing)



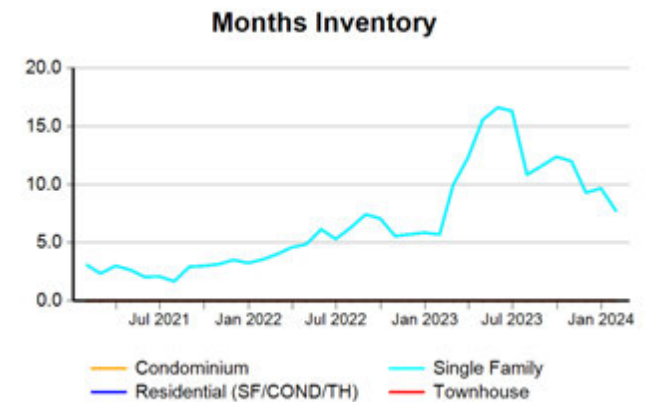
All (New and Existing) Construction



All (New and Existing) Construction



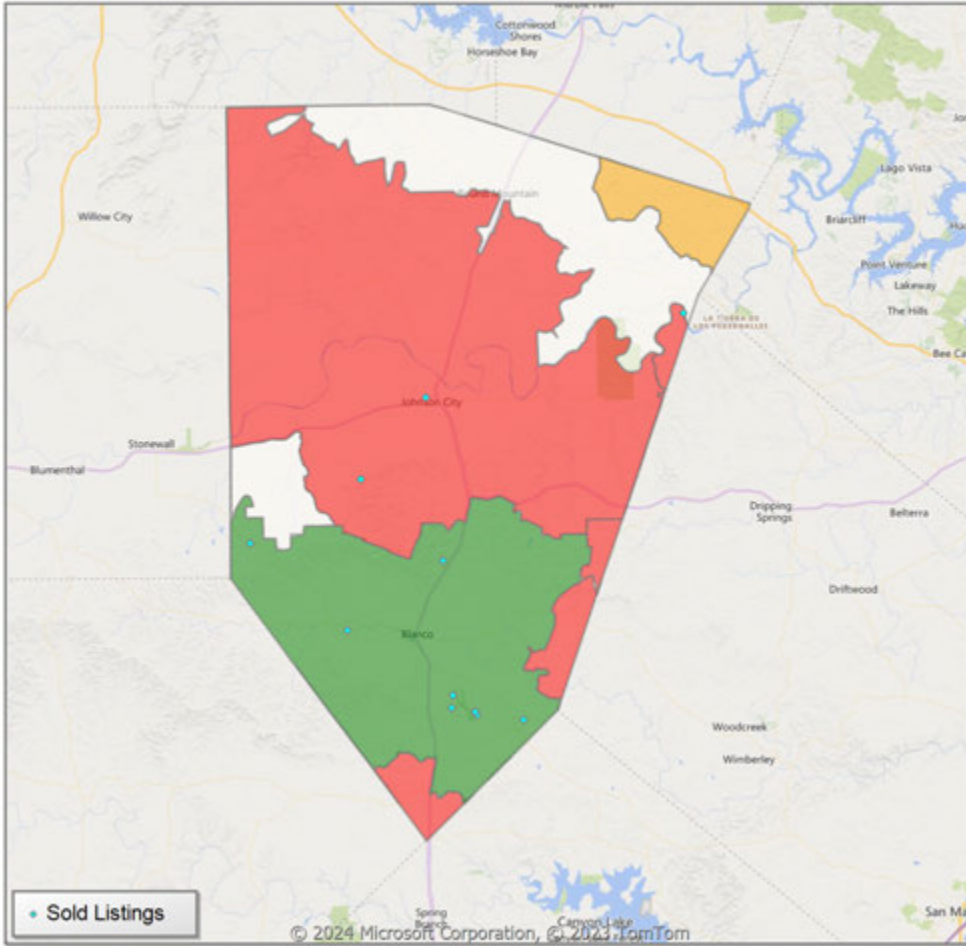
All (New and Existing) Construction



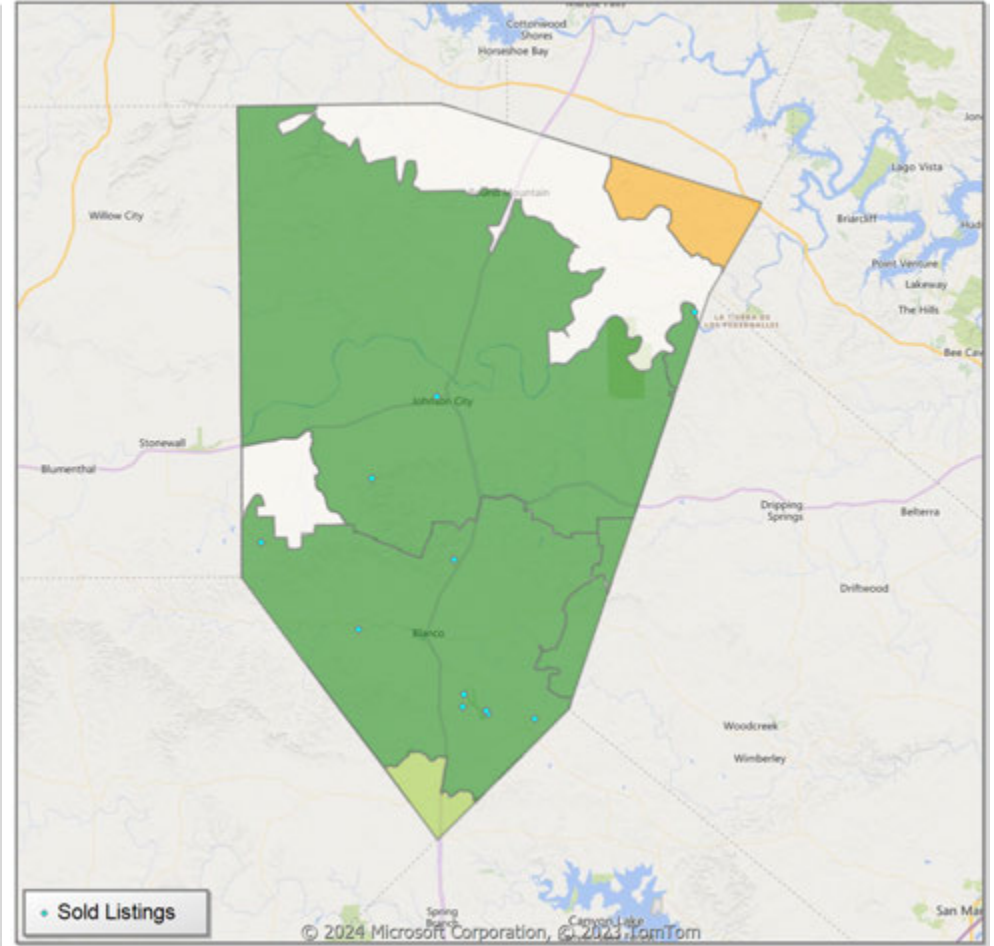
\* Closed Sale counts for most recent 3 months are Preliminary.

**Comparison By Zip Code\* in Blanco County**

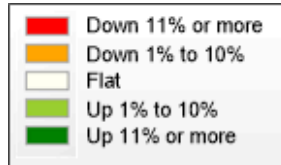
**Residential\*\* Closed Sales  
YoY Percentage Change**



**Residential\*\* Avg Close Price Per SqFt  
YoY Percentage Change**



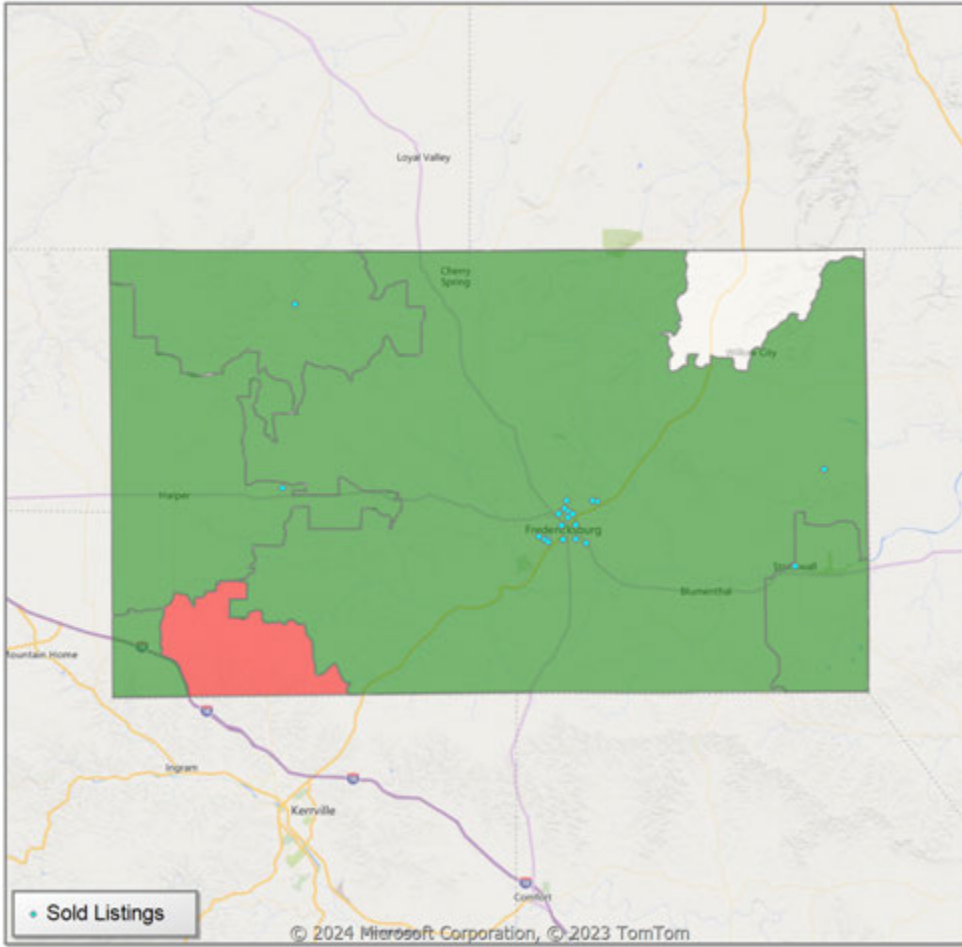
\* US Census Zip Code Tabulation Area  
\*\* Residential includes Single Family, Condominium and Townhouse.



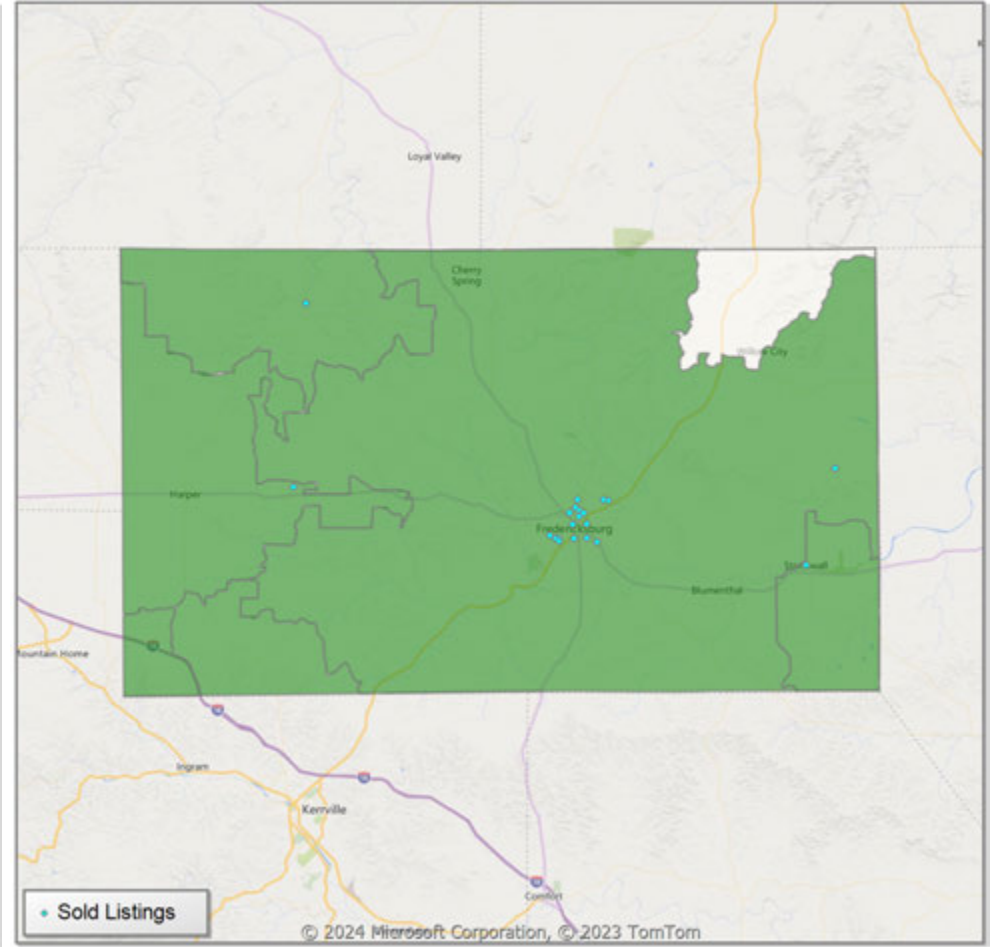


**Comparison By Zip Code\* in Gillespie County**

**Residential\*\* Closed Sales  
YoY Percentage Change**

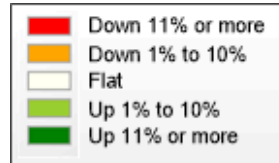


**Residential\*\* Avg Close Price Per SqFt  
YoY Percentage Change**



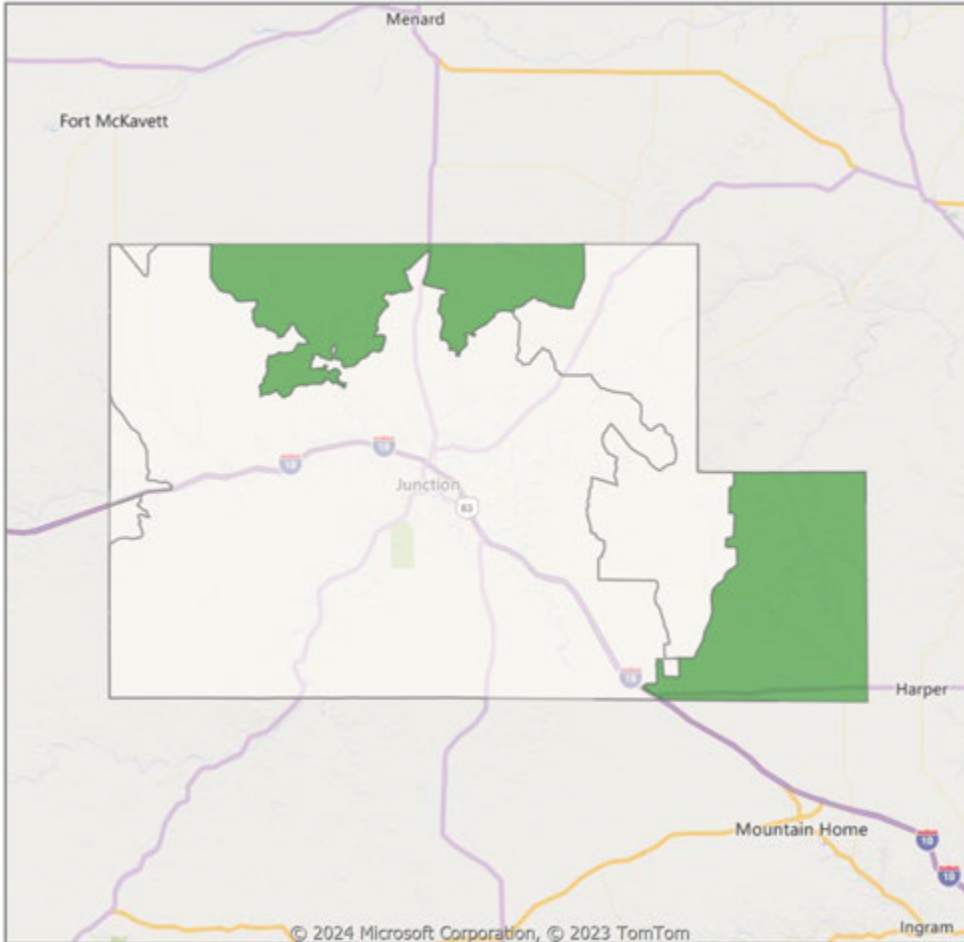
\* US Census Zip Code Tabulation Area

\*\* Residential includes Single Family, Condominium and Townhouse.

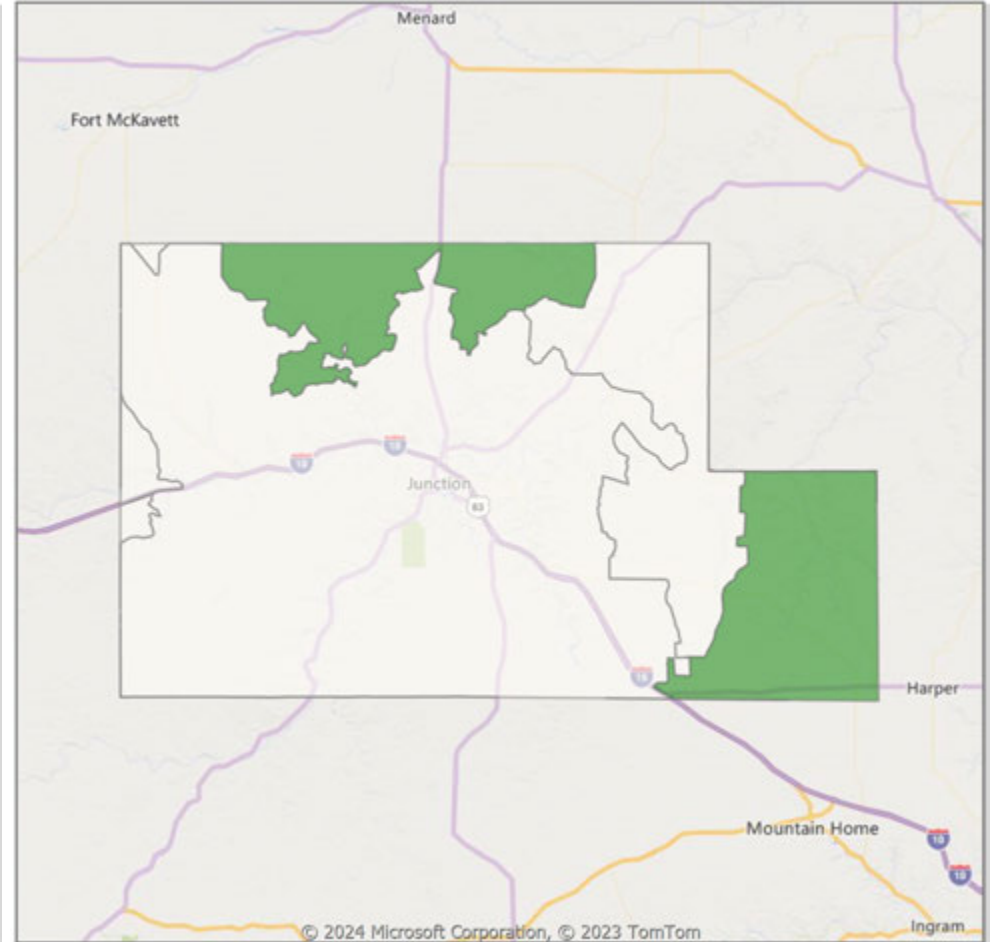


**Comparison By Zip Code\* in Kimble County**

**Residential\*\* Closed Sales  
YoY Percentage Change**

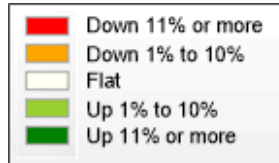


**Residential\*\* Avg Close Price Per SqFt  
YoY Percentage Change**



\* US Census Zip Code Tabulation Area

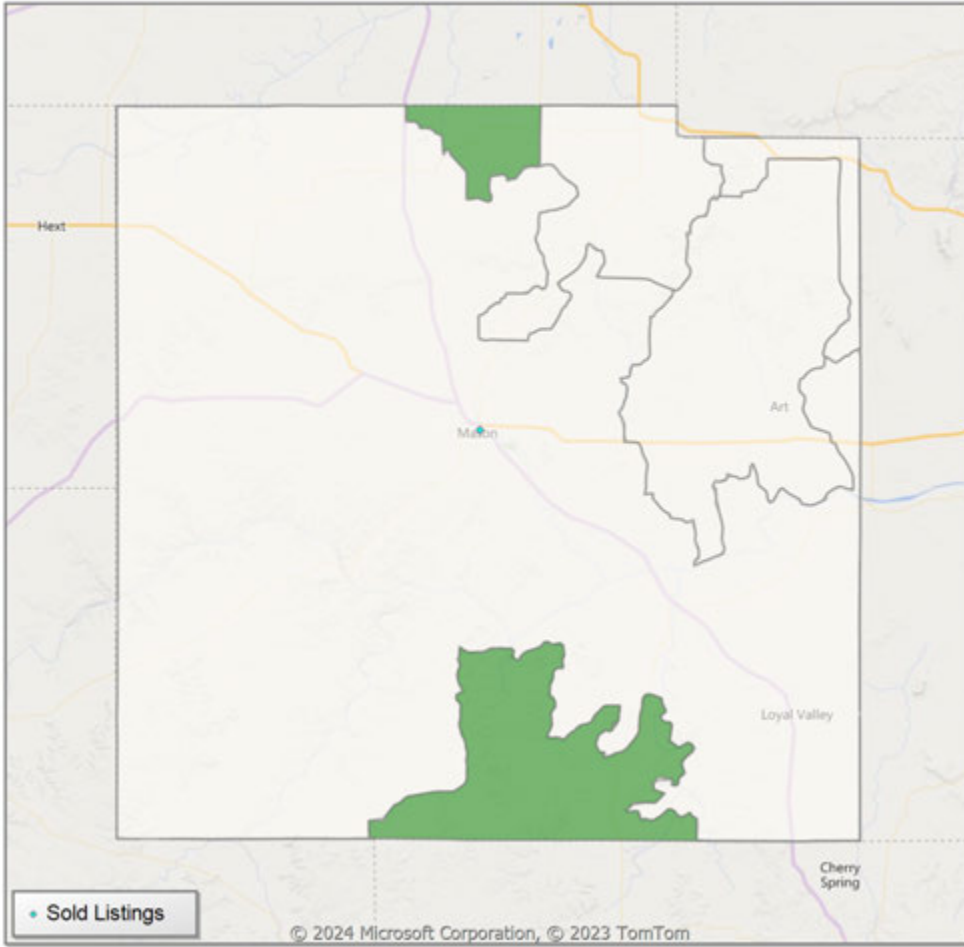
\*\* Residential includes Single Family, Condominium and Townhouse.



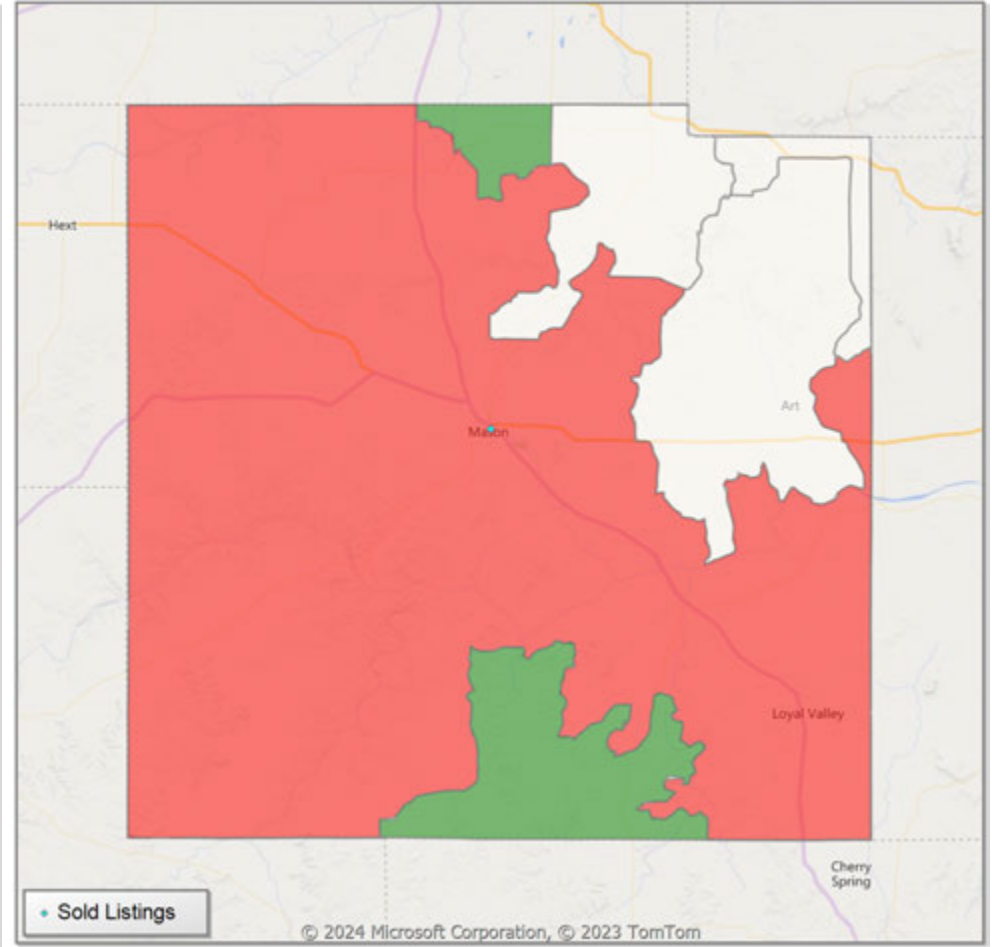


**Comparison By Zip Code\* in Mason County**

**Residential\*\* Closed Sales  
YoY Percentage Change**

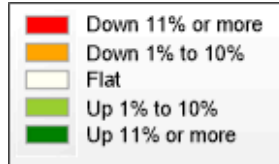


**Residential\*\* Avg Close Price Per SqFt  
YoY Percentage Change**



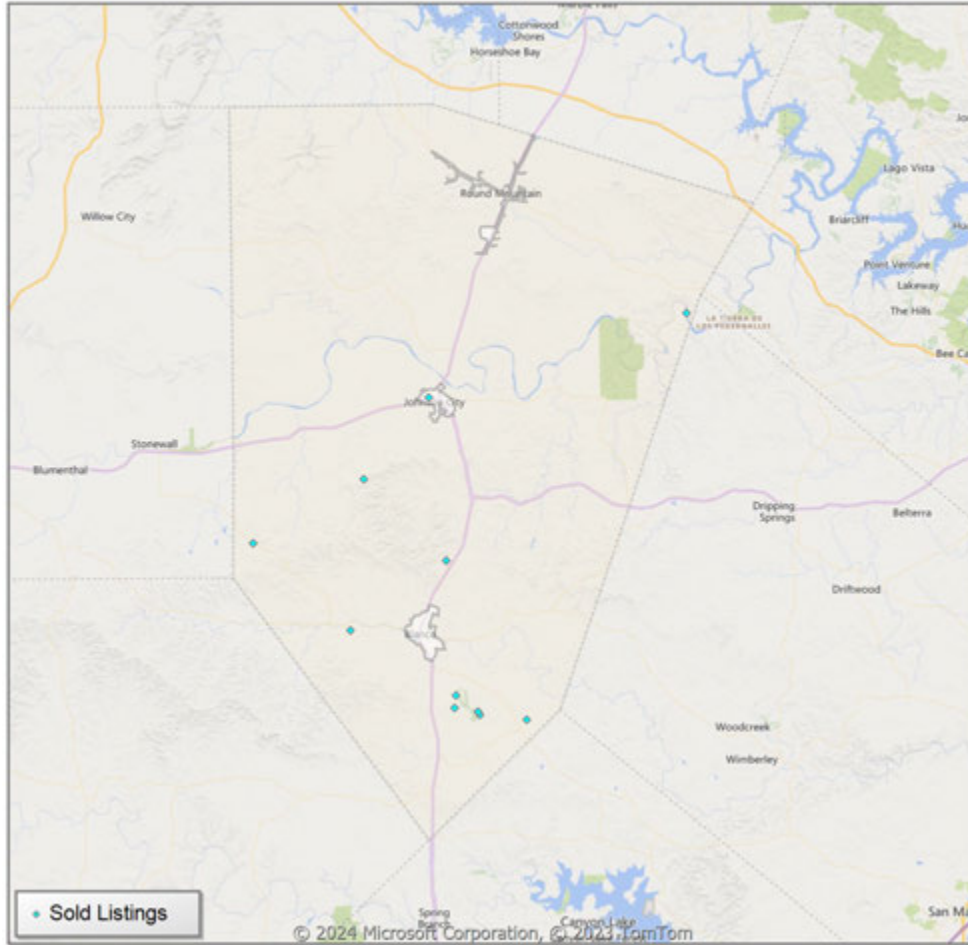
\* US Census Zip Code Tabulation Area

\*\* Residential includes Single Family, Condominium and Townhouse.

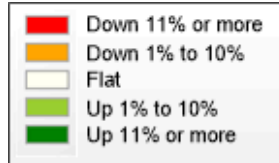
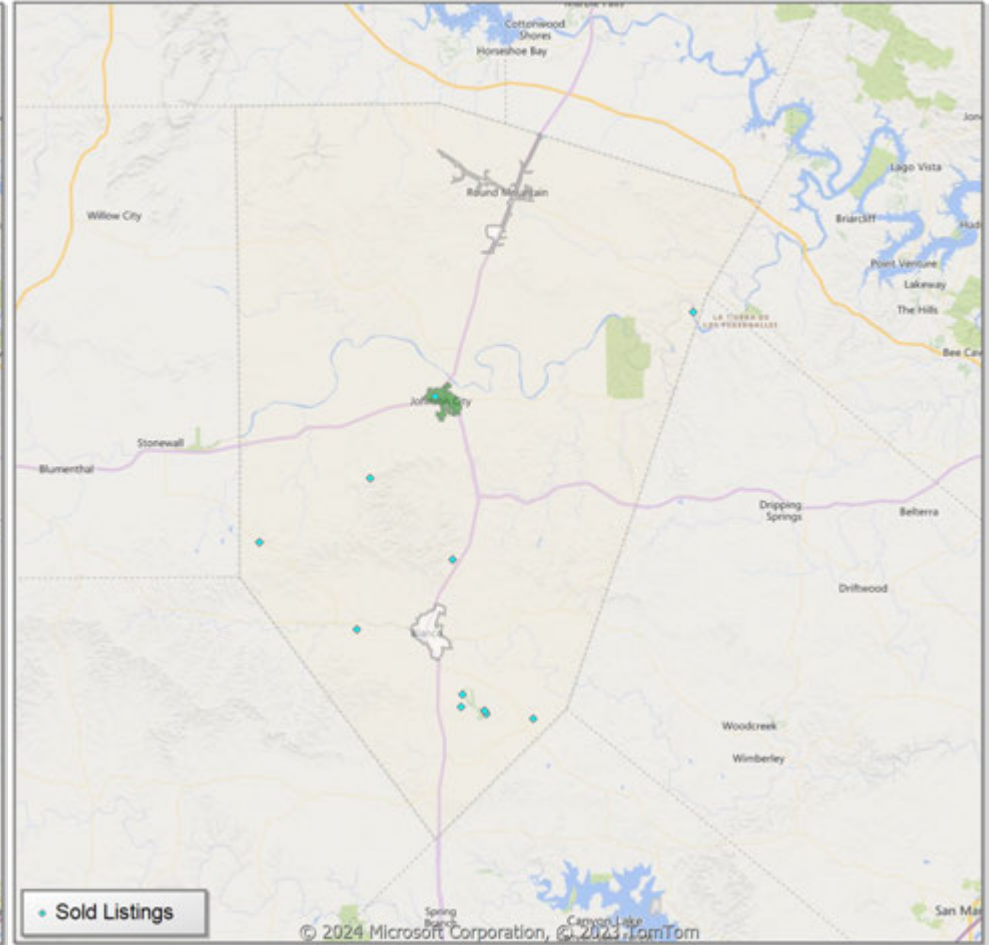


**Comparison By Local Market Area\* in Blanco County**

**Residential\*\* Closed Sales  
YoY Percentage Change**



**Residential\*\* Avg Close Price Per SqFt  
YoY Percentage Change**

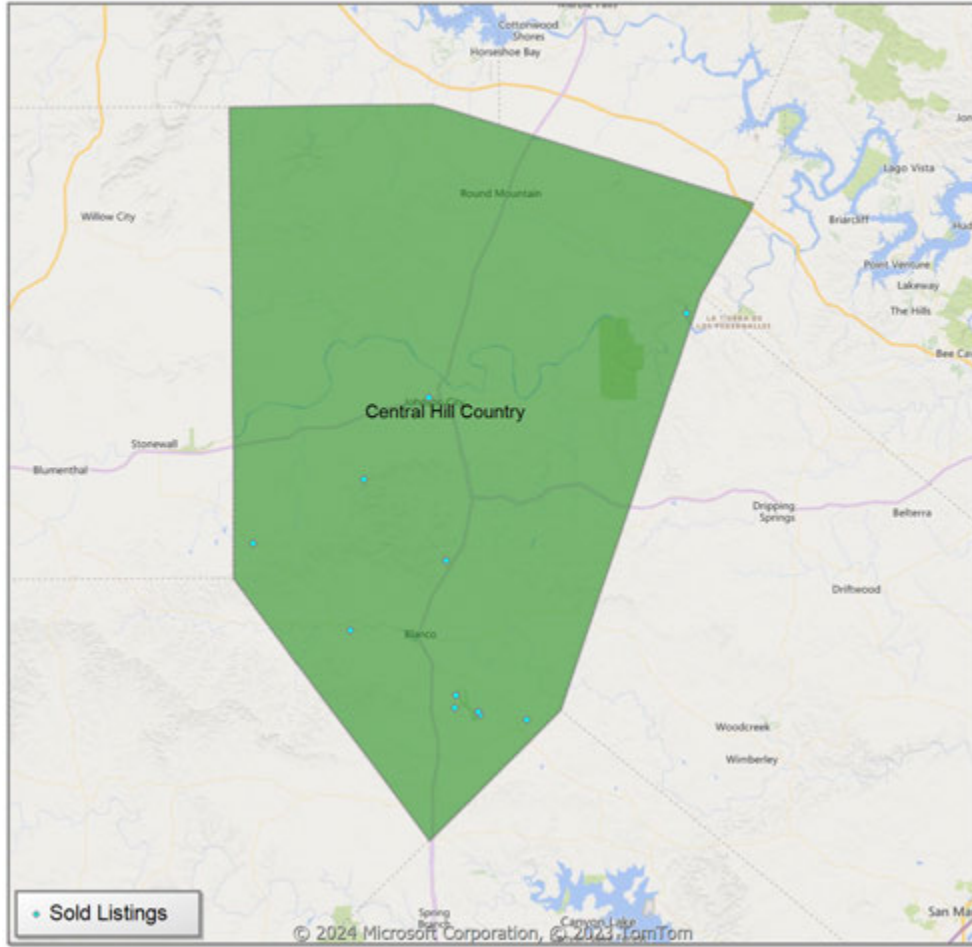


\* Census Place Group

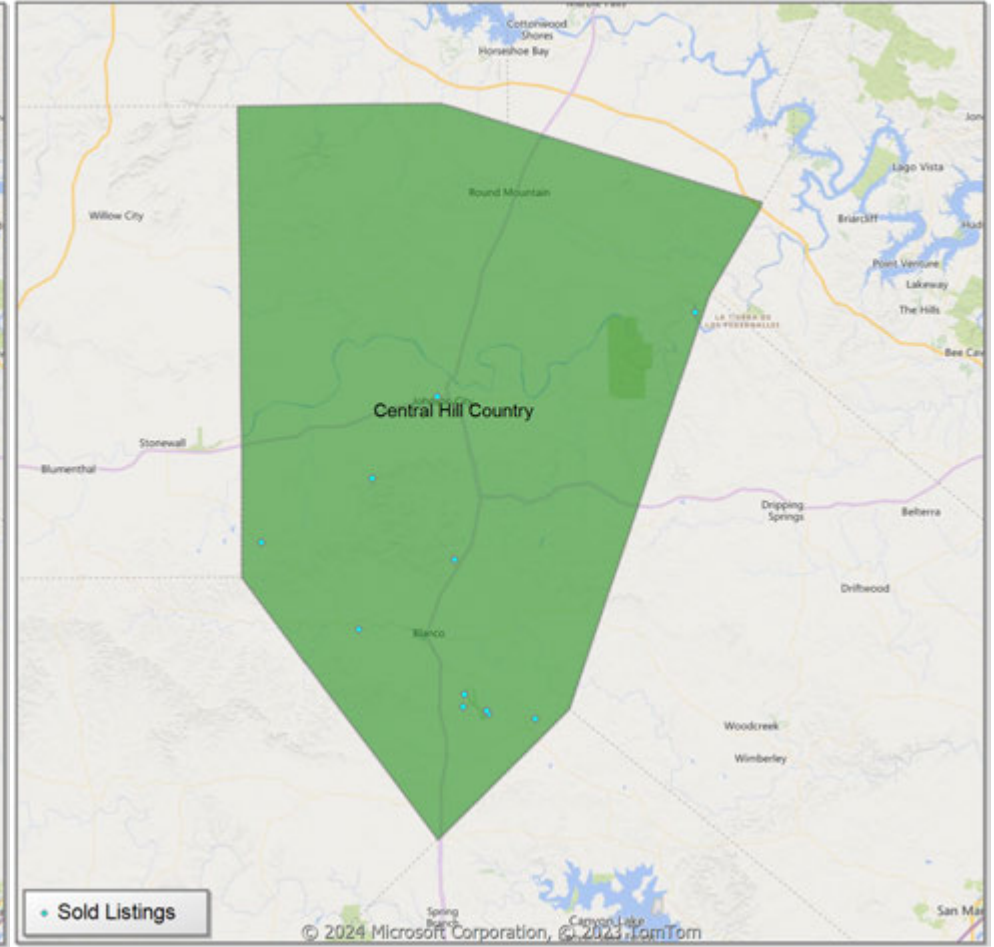
\*\* Residential includes Single Family, Condominium and Townhouse.

**Comparison By Local Market Area\* in Blanco County**

**Residential\*\* Closed Sales  
YoY Percentage Change**



**Residential\*\* Avg Close Price Per SqFt  
YoY Percentage Change**



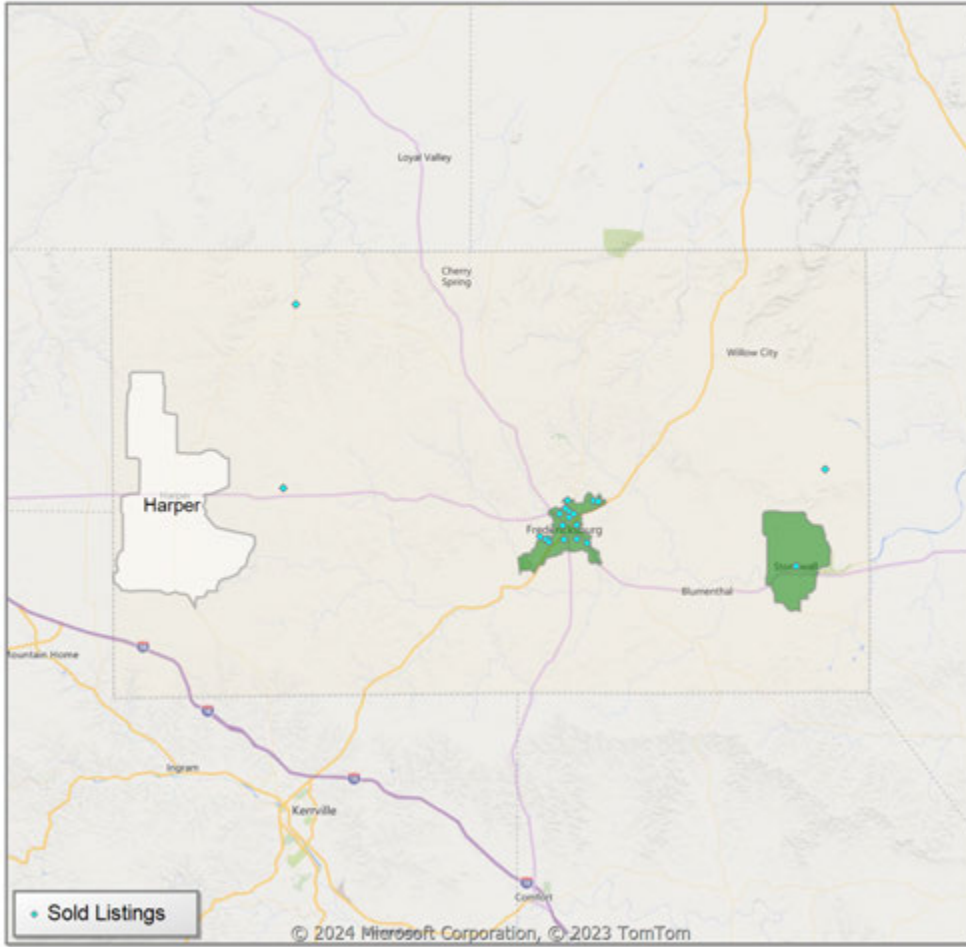
\* Custom Defined Market

\*\* Residential includes Single Family, Condominium and Townhouse.

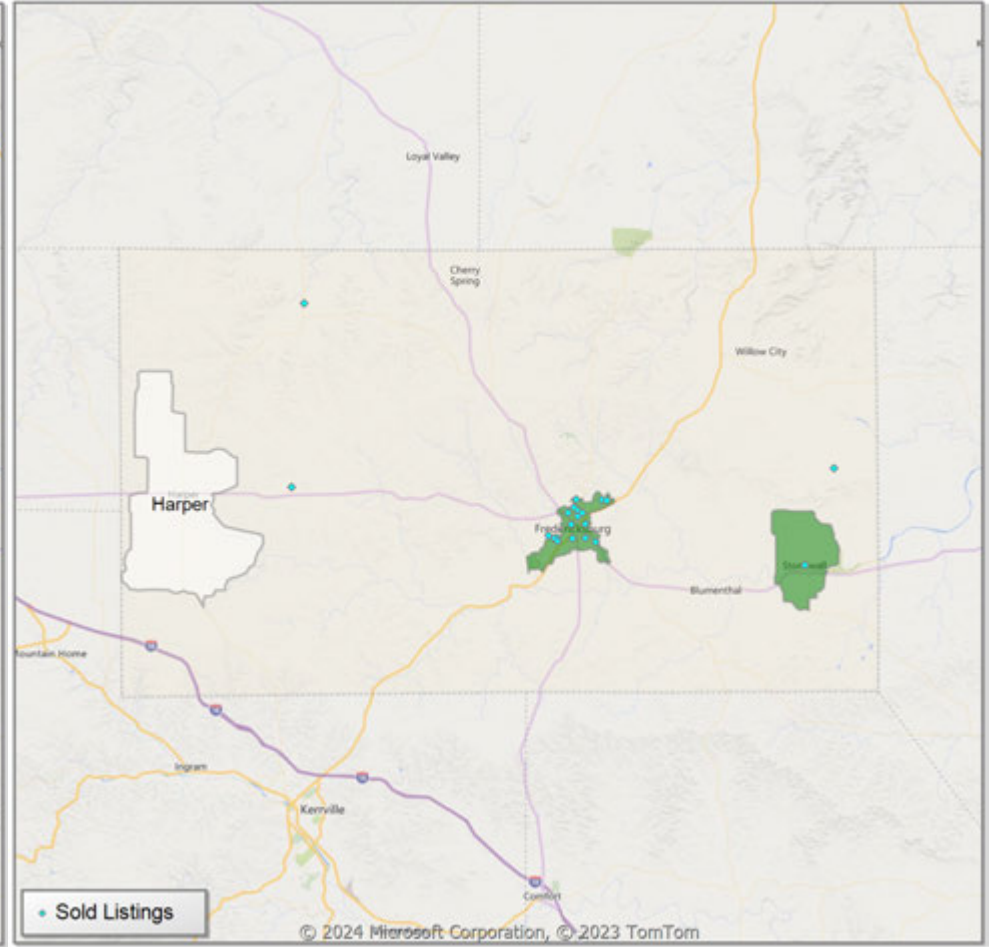


**Comparison By Local Market Area\* in Gillespie County**

**Residential\*\* Closed Sales  
YoY Percentage Change**



**Residential\*\* Avg Close Price Per SqFt  
YoY Percentage Change**

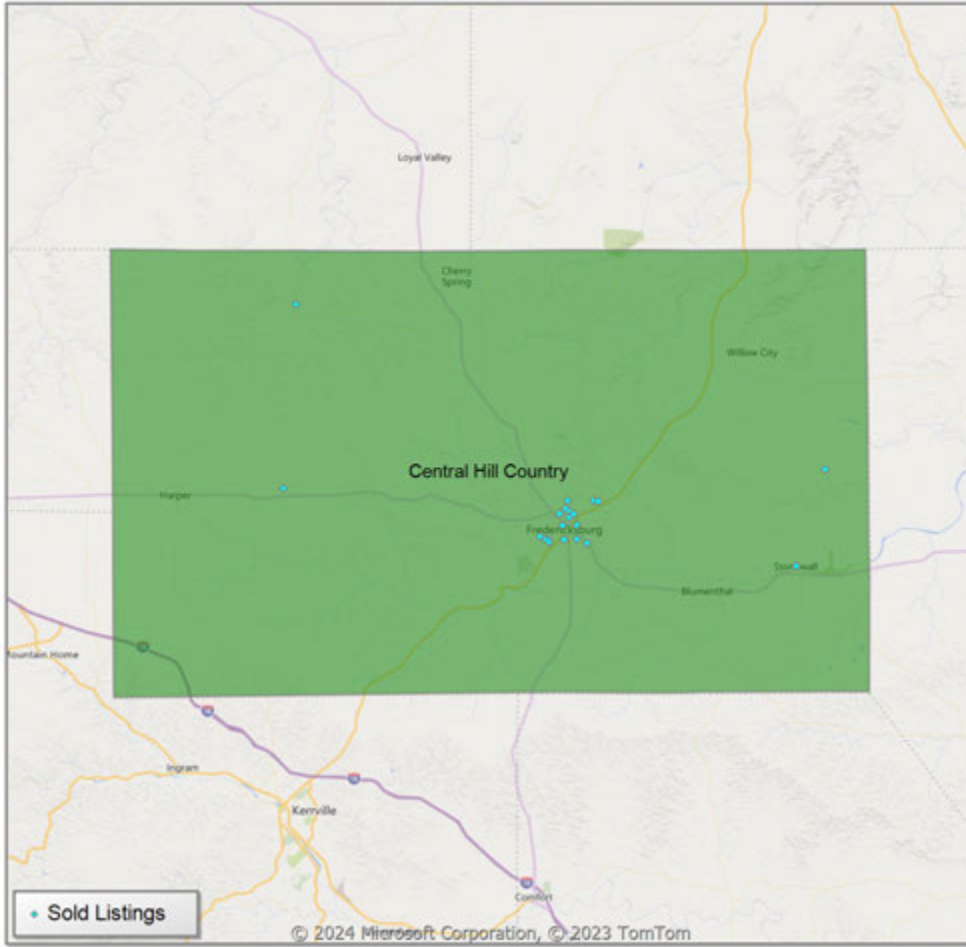


\* Census Place Group

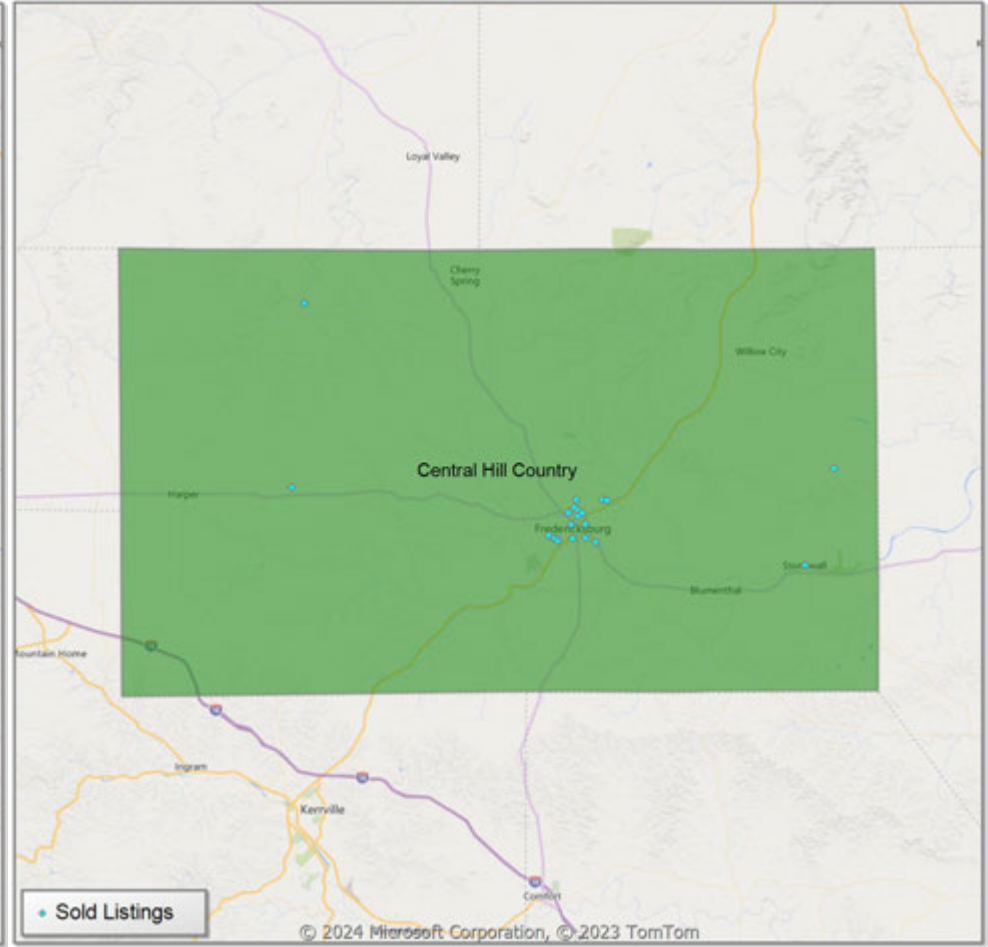
\*\* Residential includes Single Family, Condominium and Townhouse.

**Comparison By Local Market Area\* in Gillespie County**

**Residential\*\* Closed Sales  
YoY Percentage Change**



**Residential\*\* Avg Close Price Per SqFt  
YoY Percentage Change**

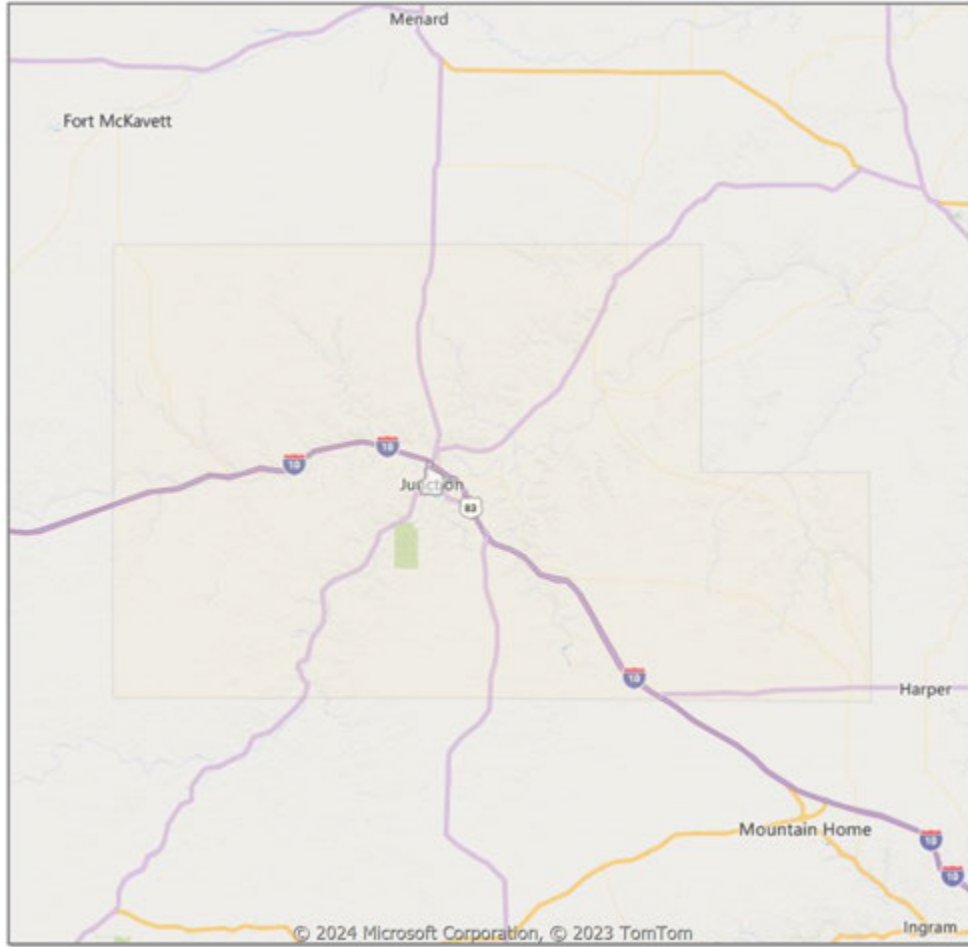


\* Custom Defined Market

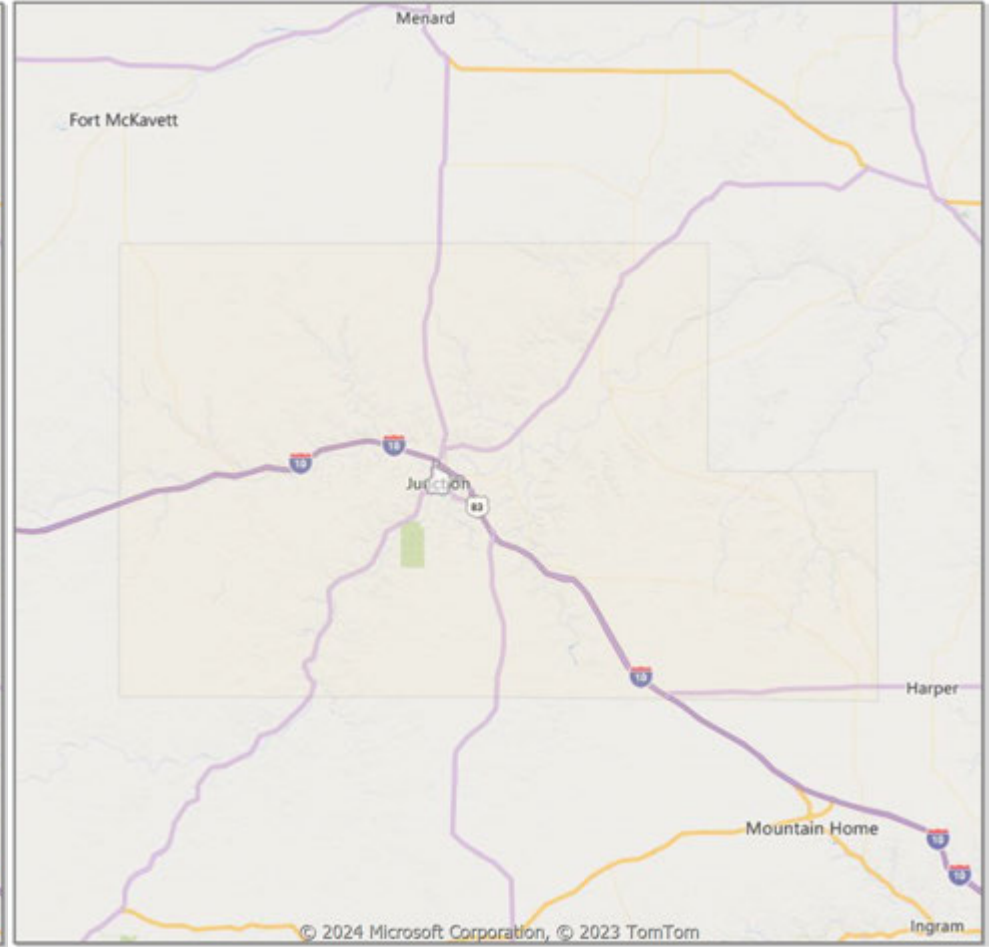
\*\* Residential includes Single Family, Condominium and Townhouse.

**Comparison By Local Market Area\* in Kimble County**

**Residential\*\* Closed Sales  
YoY Percentage Change**



**Residential\*\* Avg Close Price Per SqFt  
YoY Percentage Change**

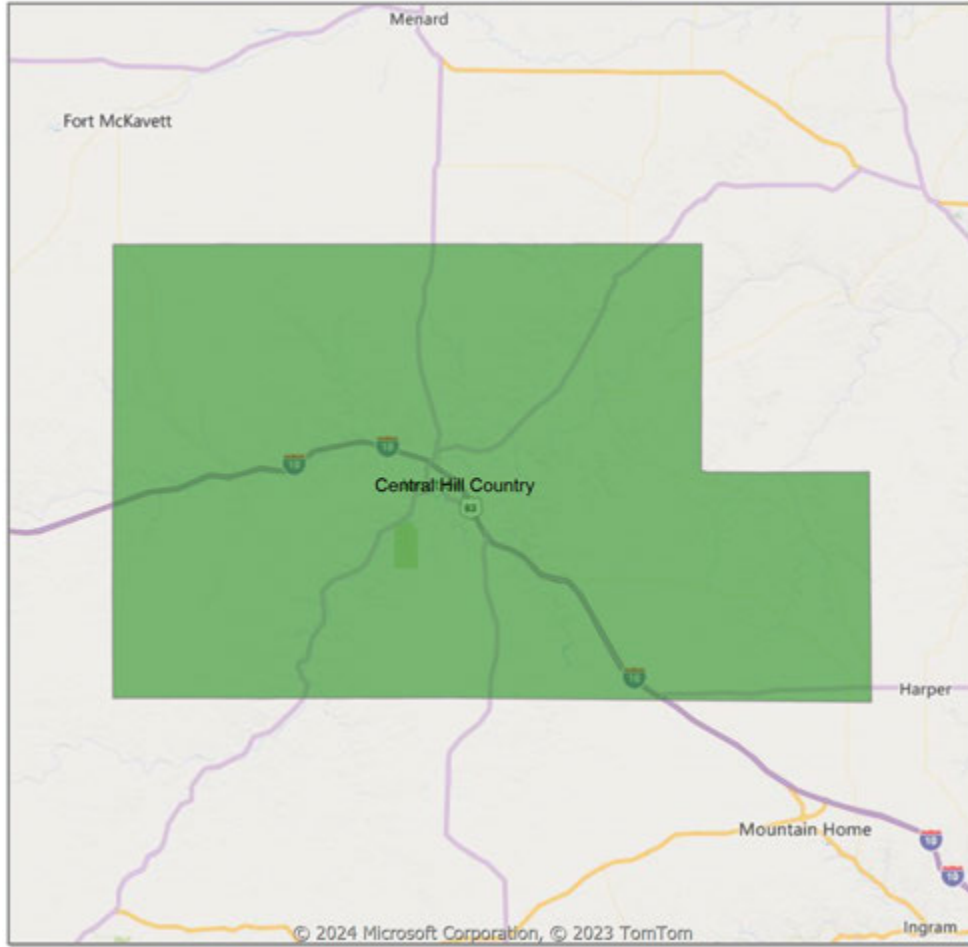


\* Census Place Group

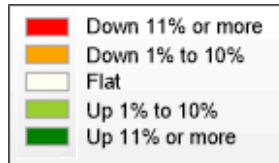
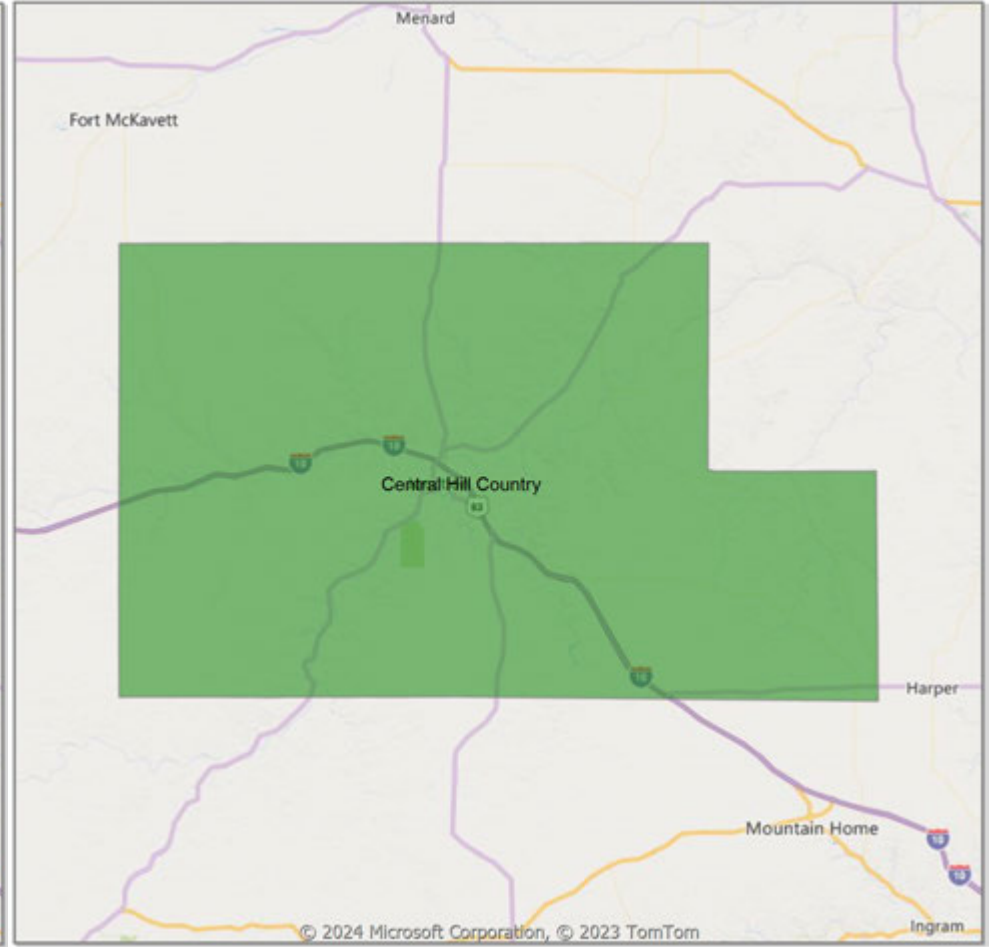
\*\* Residential includes Single Family, Condominium and Townhouse.

**Comparison By Local Market Area\* in Kimble County**

**Residential\*\* Closed Sales  
YoY Percentage Change**



**Residential\*\* Avg Close Price Per SqFt  
YoY Percentage Change**



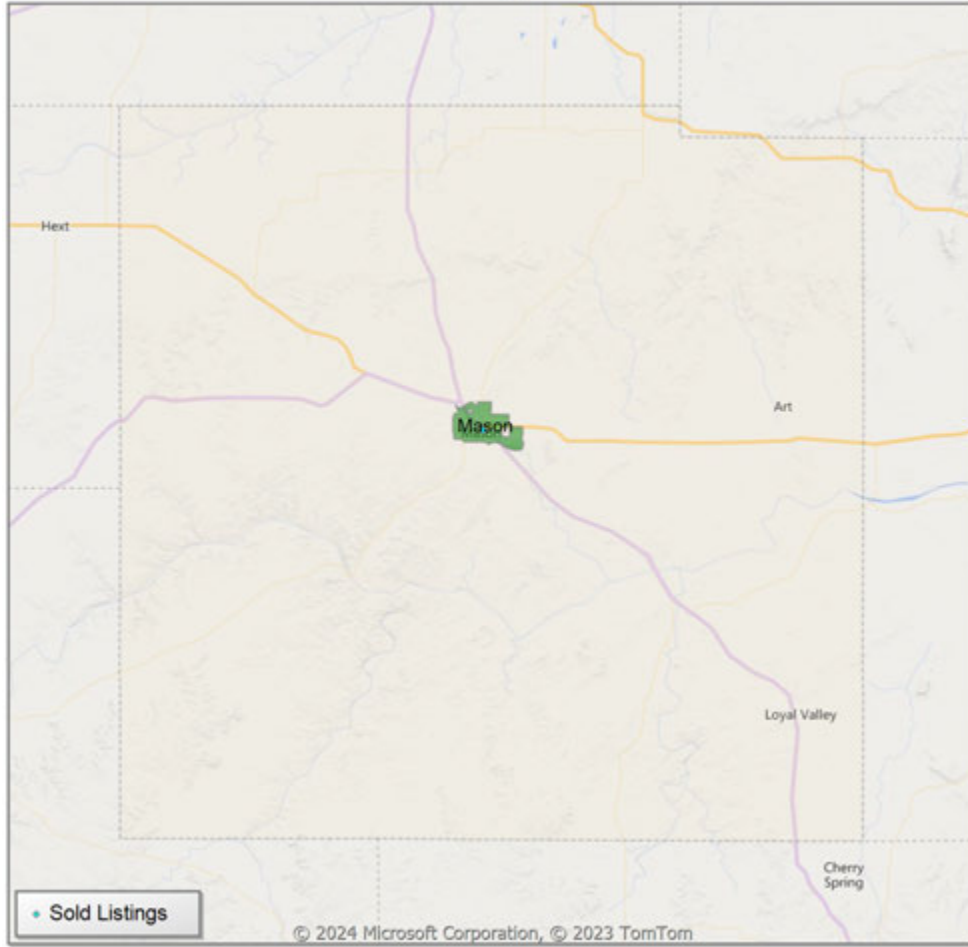
\* Custom Defined Market

\*\* Residential includes Single Family, Condominium and Townhouse.

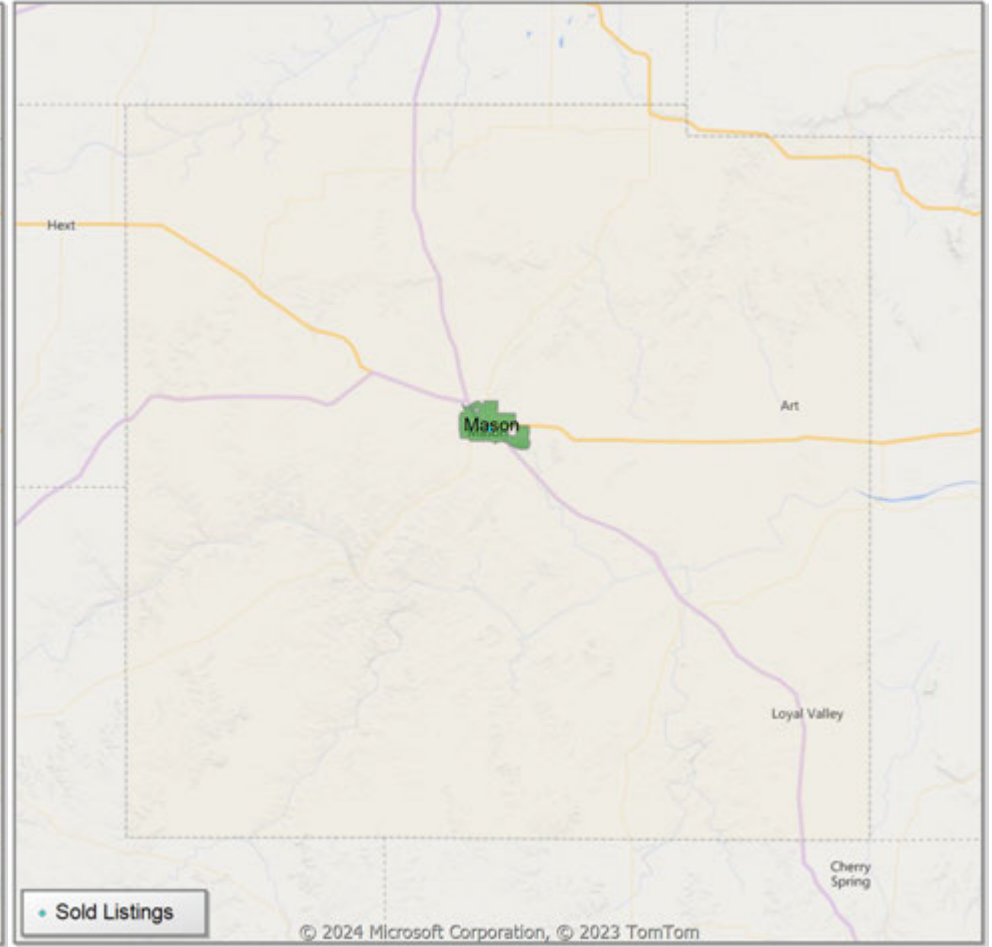


**Comparison By Local Market Area\* in Mason County**

**Residential\*\* Closed Sales  
YoY Percentage Change**



**Residential\*\* Avg Close Price Per SqFt  
YoY Percentage Change**

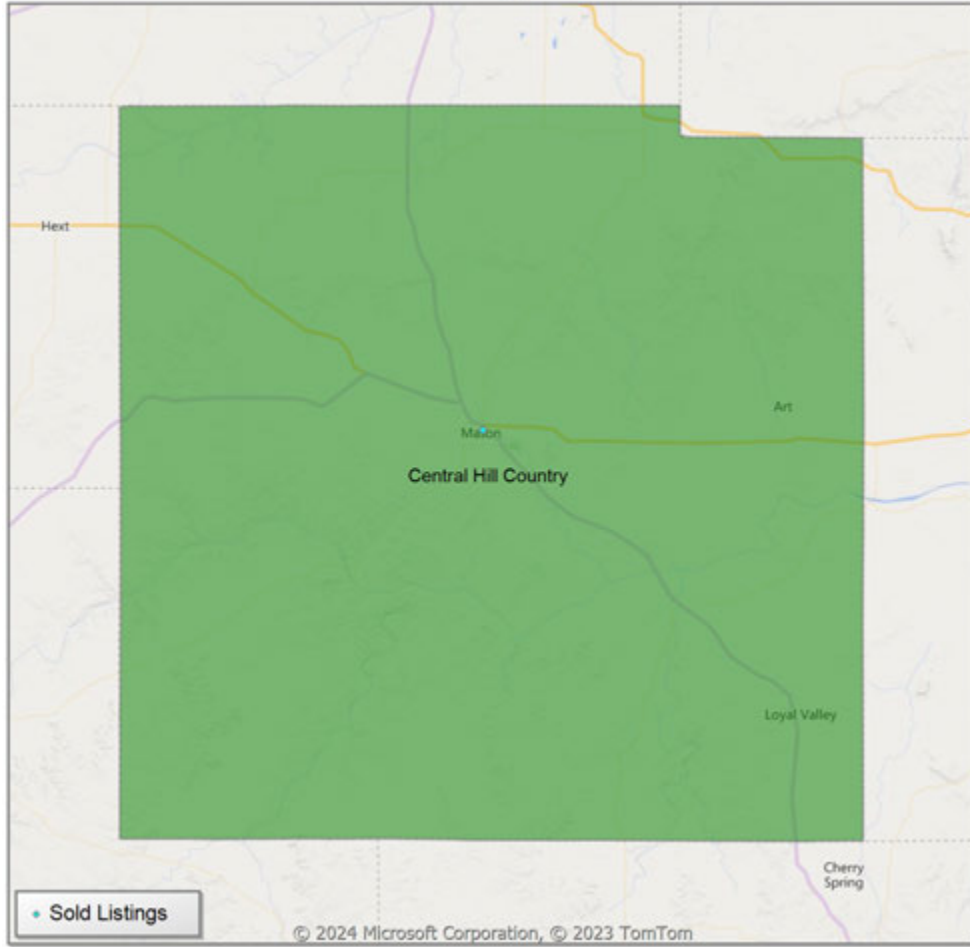


\* Census Place Group

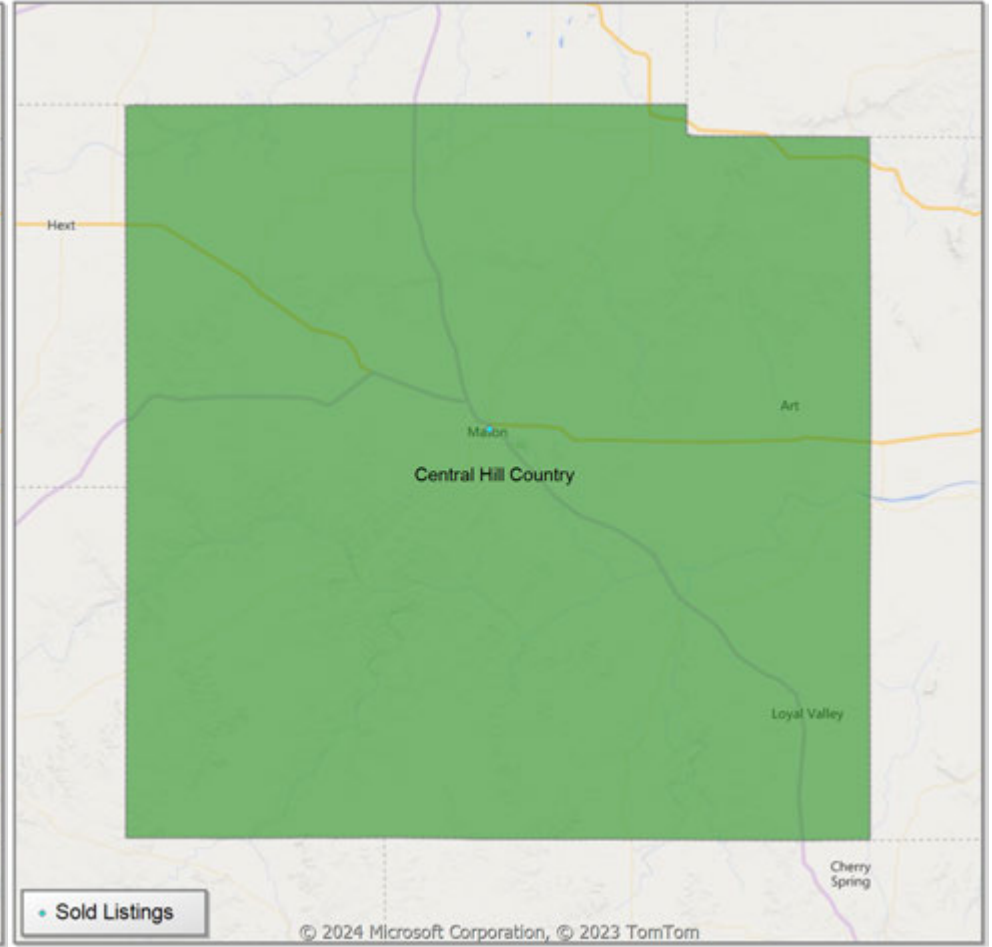
\*\* Residential includes Single Family, Condominium and Townhouse.

**Comparison By Local Market Area\* in Mason County**

Residential\*\* Closed Sales  
YoY Percentage Change



Residential\*\* Avg Close Price Per SqFt  
YoY Percentage Change



\* Custom Defined Market

\*\* Residential includes Single Family, Condominium and Townhouse.

Market Analysis By Local Market Area\*: Blanco

Property Type	Closed Sales**	YoY%	Dollar Volume	YoY%	Average Price	YoY%	Median Price	YoY%	Price/Sqft	YoY%	DOM	New Listings	Active Listings	Pending Sales	Months Inventory	Close To OLP
<b>All(New and Existing)</b>																
Residential (SF/COND/TH)	-	0.0%	-	0.0%	-	0.0%	-	0.0%	-	0.0%	-	1	13	-	7.4	0.0%
YTD:	-	0.0%	-	0.0%	-	0.0%	-	0.0%	-	0.0%	-	1	13	-		0.0%
Single Family	-	0.0%	-	0.0%	-	0.0%	-	0.0%	-	0.0%	-	1	13	-	7.4	0.0%
YTD:	-	0.0%	-	0.0%	-	0.0%	-	0.0%	-	0.0%	-	1	13	-		0.0%
Townhouse	-	0.0%	-	0.0%	-	0.0%	-	0.0%	-	0.0%	-	-	-	-	-	0.0%
YTD:	-	0.0%	-	0.0%	-	0.0%	-	0.0%	-	0.0%	-	-	-	-	-	0.0%
Condominium	-	0.0%	-	0.0%	-	0.0%	-	0.0%	-	0.0%	-	-	-	-	-	0.0%
YTD:	-	0.0%	-	0.0%	-	0.0%	-	0.0%	-	0.0%	-	-	-	-	-	0.0%
<b>Existing Home</b>																
Residential (SF/COND/TH)	-	0.0%	-	0.0%	-	0.0%	-	0.0%	-	0.0%	-	1	13	-	8.2	0.0%
YTD:	-	0.0%	-	0.0%	-	0.0%	-	0.0%	-	0.0%	-	1	13	-		0.0%
Single Family	-	0.0%	-	0.0%	-	0.0%	-	0.0%	-	0.0%	-	1	13	-	8.2	0.0%
YTD:	-	0.0%	-	0.0%	-	0.0%	-	0.0%	-	0.0%	-	1	13	-		0.0%
Townhouse	-	0.0%	-	0.0%	-	0.0%	-	0.0%	-	0.0%	-	-	-	-	-	0.0%
YTD:	-	0.0%	-	0.0%	-	0.0%	-	0.0%	-	0.0%	-	-	-	-	-	0.0%
Condominium	-	0.0%	-	0.0%	-	0.0%	-	0.0%	-	0.0%	-	-	-	-	-	0.0%
YTD:	-	0.0%	-	0.0%	-	0.0%	-	0.0%	-	0.0%	-	-	-	-	-	0.0%
<b>New Construction</b>																
Residential (SF/COND/TH)	-	0.0%	-	0.0%	-	0.0%	-	0.0%	-	0.0%	-	-	-	-	-	0.0%
YTD:	-	0.0%	-	0.0%	-	0.0%	-	0.0%	-	0.0%	-	-	-	-	-	0.0%
Single Family	-	0.0%	-	0.0%	-	0.0%	-	0.0%	-	0.0%	-	-	-	-	-	0.0%
YTD:	-	0.0%	-	0.0%	-	0.0%	-	0.0%	-	0.0%	-	-	-	-	-	0.0%
Townhouse	-	0.0%	-	0.0%	-	0.0%	-	0.0%	-	0.0%	-	-	-	-	-	0.0%
YTD:	-	0.0%	-	0.0%	-	0.0%	-	0.0%	-	0.0%	-	-	-	-	-	0.0%
Condominium	-	0.0%	-	0.0%	-	0.0%	-	0.0%	-	0.0%	-	-	-	-	-	0.0%
YTD:	-	0.0%	-	0.0%	-	0.0%	-	0.0%	-	0.0%	-	-	-	-	-	0.0%

\* Local Market Area Code: 91; Type: Census Place Group  
 \*\* Closed Sale counts for most recent 3 months are Preliminary.

Market Analysis By Local Market Area\*: Central Hill Country

Property Type	Closed Sales**	YoY%	Dollar Volume	YoY%	Average Price	YoY%	Median Price	YoY%	Price/Sqft	YoY%	DOM	New Listings	Active Listings	Pending Sales	Months Inventory	Close To OLP
<b>All(New and Existing)</b>																
Residential (SF/COND/TH)	36	20.0%	\$22,288,608	15.5%	\$619,128	-3.7%	\$515,000	-5.5%	\$507	67.6%	79	104	462	38	9.7	95.5%
YTD:	36	20.0%	\$22,288,608	15.5%	\$619,128	-3.7%	\$515,000	-5.5%	\$507	67.6%	79	104	462	38		95.5%
Single Family	36	20.0%	\$22,288,608	15.5%	\$619,128	-3.7%	\$515,000	-5.5%	\$507	67.6%	79	95	439	38	9.3	95.5%
YTD:	36	20.0%	\$22,288,608	15.5%	\$619,128	-3.7%	\$515,000	-5.5%	\$507	67.6%	79	95	439	38		95.5%
Townhouse	-	0.0%	-	0.0%	-	0.0%	-	0.0%	-	0.0%	-	-	-	-	-	0.0%
YTD:	-	0.0%	-	0.0%	-	0.0%	-	0.0%	-	0.0%	-	-	-	-	-	0.0%
Condominium	-	0.0%	-	0.0%	-	0.0%	-	0.0%	-	0.0%	-	9	23	-	276.0	0.0%
YTD:	-	0.0%	-	0.0%	-	0.0%	-	0.0%	-	0.0%	-	9	23	-		0.0%
<b>Existing Home</b>																
Residential (SF/COND/TH)	29	16.0%	\$19,058,800	17.8%	\$657,200	1.5%	\$525,000	-12.5%	\$564	84.3%	81	66	344	29	9.1	94.8%
YTD:	29	16.0%	\$19,058,800	17.8%	\$657,200	1.5%	\$525,000	-12.5%	\$564	84.3%	81	66	344	29		94.8%
Single Family	29	16.0%	\$19,058,800	17.8%	\$657,200	1.5%	\$525,000	-12.5%	\$564	84.3%	81	63	328	29	8.8	94.8%
YTD:	29	16.0%	\$19,058,800	17.8%	\$657,200	1.5%	\$525,000	-12.5%	\$564	84.3%	81	63	328	29		94.8%
Townhouse	-	0.0%	-	0.0%	-	0.0%	-	0.0%	-	0.0%	-	-	-	-	-	0.0%
YTD:	-	0.0%	-	0.0%	-	0.0%	-	0.0%	-	0.0%	-	-	-	-	-	0.0%
Condominium	-	0.0%	-	0.0%	-	0.0%	-	0.0%	-	0.0%	-	3	16	-	192.0	0.0%
YTD:	-	0.0%	-	0.0%	-	0.0%	-	0.0%	-	0.0%	-	3	16	-		0.0%
<b>New Construction</b>																
Residential (SF/COND/TH)	7	40.0%	\$3,305,952	6.3%	\$472,279	-24.0%	\$480,452	-11.0%	\$251	-12.0%	71	38	118	9	11.7	98.1%
YTD:	7	40.0%	\$3,305,952	6.3%	\$472,279	-24.0%	\$480,452	-11.0%	\$251	-12.0%	71	38	118	9		98.1%
Single Family	7	40.0%	\$3,305,952	6.3%	\$472,279	-24.0%	\$480,452	-11.0%	\$251	-12.0%	71	32	111	9	11.0	98.1%
YTD:	7	40.0%	\$3,305,952	6.3%	\$472,279	-24.0%	\$480,452	-11.0%	\$251	-12.0%	71	32	111	9		98.1%
Townhouse	-	0.0%	-	0.0%	-	0.0%	-	0.0%	-	0.0%	-	-	-	-	-	0.0%
YTD:	-	0.0%	-	0.0%	-	0.0%	-	0.0%	-	0.0%	-	-	-	-	-	0.0%
Condominium	-	0.0%	-	0.0%	-	0.0%	-	0.0%	-	0.0%	-	6	7	-	-	0.0%
YTD:	-	0.0%	-	0.0%	-	0.0%	-	0.0%	-	0.0%	-	6	7	-		0.0%

\* Local Market Area Code: CHC; Type: Custom Defined Market

\*\* Closed Sale counts for most recent 3 months are Preliminary.

Market Analysis By Local Market Area\*: Fredericksburg

Property Type	Closed Sales**	YoY%	Dollar Volume	YoY%	Average Price	YoY%	Median Price	YoY%	Price/Sqft	YoY%	DOM	New Listings	Active Listings	Pending Sales	Months Inventory	Close To OLP
<b>All(New and Existing)</b>																
Residential (SF/COND/TH)	17	142.9%	\$11,109,343	209.3%	\$653,491	27.3%	\$532,500	16.0%	\$398	22.5%	98	40	143	15	8.3	95.1%
YTD:	17	142.9%	\$11,109,343	209.3%	\$653,491	27.3%	\$532,500	16.0%	\$398	22.5%	98	40	143	15		95.1%
Single Family	17	142.9%	\$11,109,343	209.3%	\$653,491	27.3%	\$532,500	16.0%	\$398	22.5%	98	34	136	15	8.1	95.1%
YTD:	17	142.9%	\$11,109,343	209.3%	\$653,491	27.3%	\$532,500	16.0%	\$398	22.5%	98	34	136	15		95.1%
Townhouse	-	0.0%	-	0.0%	-	0.0%	-	0.0%	-	0.0%	-	-	-	-	-	0.0%
YTD:	-	0.0%	-	0.0%	-	0.0%	-	0.0%	-	0.0%	-	-	-	-	-	0.0%
Condominium	-	0.0%	-	0.0%	-	0.0%	-	0.0%	-	0.0%	-	6	7	-	-	0.0%
YTD:	-	0.0%	-	0.0%	-	0.0%	-	0.0%	-	0.0%	-	6	7	-	-	0.0%
<b>Existing Home</b>																
Residential (SF/COND/TH)	16	166.7%	\$10,640,427	248.6%	\$665,027	30.7%	\$540,000	31.9%	\$406	22.2%	96	25	114	14	7.4	95.0%
YTD:	16	166.7%	\$10,640,427	248.6%	\$665,027	30.7%	\$540,000	31.9%	\$406	22.2%	96	25	114	14		95.0%
Single Family	15	150.0%	\$9,975,400	226.8%	\$665,027	30.7%	\$540,000	31.9%	\$406	22.2%	96	25	114	14	7.6	95.0%
YTD:	15	150.0%	\$9,975,400	226.8%	\$665,027	30.7%	\$540,000	31.9%	\$406	22.2%	96	25	114	14		95.0%
Townhouse	-	0.0%	-	0.0%	-	0.0%	-	0.0%	-	0.0%	-	-	-	-	-	0.0%
YTD:	-	0.0%	-	0.0%	-	0.0%	-	0.0%	-	0.0%	-	-	-	-	-	0.0%
Condominium	-	0.0%	-	0.0%	-	0.0%	-	0.0%	-	0.0%	-	-	-	-	-	0.0%
YTD:	-	0.0%	-	0.0%	-	0.0%	-	0.0%	-	0.0%	-	-	-	-	-	0.0%
<b>New Construction</b>																
Residential (SF/COND/TH)	1	0.0%	\$480,452	-11.0%	\$480,452	-11.0%	\$480,452	-11.0%	\$270	-2.7%	132	15	29	1	17.4	98.0%
YTD:	1	0.0%	\$480,452	-11.0%	\$480,452	-11.0%	\$480,452	-11.0%	\$270	-2.7%	132	15	29	1		98.0%
Single Family	1	0.0%	\$480,452	-11.0%	\$480,452	-11.0%	\$480,452	-11.0%	\$270	-2.7%	132	9	22	1	13.2	98.0%
YTD:	1	0.0%	\$480,452	-11.0%	\$480,452	-11.0%	\$480,452	-11.0%	\$270	-2.7%	132	9	22	1		98.0%
Townhouse	-	0.0%	-	0.0%	-	0.0%	-	0.0%	-	0.0%	-	-	-	-	-	0.0%
YTD:	-	0.0%	-	0.0%	-	0.0%	-	0.0%	-	0.0%	-	-	-	-	-	0.0%
Condominium	-	0.0%	-	0.0%	-	0.0%	-	0.0%	-	0.0%	-	6	7	-	-	0.0%
YTD:	-	0.0%	-	0.0%	-	0.0%	-	0.0%	-	0.0%	-	6	7	-	-	0.0%

\* Local Market Area Code: 335; Type: Census Place Group  
 \*\* Closed Sale counts for most recent 3 months are Preliminary.

Market Analysis By Local Market Area\*: Harper

Property Type	Closed Sales**	YoY%	Dollar Volume	YoY%	Average Price	YoY%	Median Price	YoY%	Price/Sqft	YoY%	DOM	New Listings	Active Listings	Pending Sales	Months Inventory	Close To OLP
<b>All(New and Existing)</b>																
Residential (SF/COND/TH)	-	0.0%	-	0.0%	-	0.0%	-	0.0%	-	0.0%	-	4	23	-	9.9	0.0%
YTD:	-	0.0%	-	0.0%	-	0.0%	-	0.0%	-	0.0%	-	4	23	-		0.0%
Single Family	-	0.0%	-	0.0%	-	0.0%	-	0.0%	-	0.0%	-	4	23	-	9.9	0.0%
YTD:	-	0.0%	-	0.0%	-	0.0%	-	0.0%	-	0.0%	-	4	23	-		0.0%
Townhouse	-	0.0%	-	0.0%	-	0.0%	-	0.0%	-	0.0%	-	-	-	-	-	0.0%
YTD:	-	0.0%	-	0.0%	-	0.0%	-	0.0%	-	0.0%	-	-	-	-	-	0.0%
Condominium	-	0.0%	-	0.0%	-	0.0%	-	0.0%	-	0.0%	-	-	-	-	-	0.0%
YTD:	-	0.0%	-	0.0%	-	0.0%	-	0.0%	-	0.0%	-	-	-	-	-	0.0%
<b>Existing Home</b>																
Residential (SF/COND/TH)	-	0.0%	-	0.0%	-	0.0%	-	0.0%	-	0.0%	-	4	19	-	12.0	0.0%
YTD:	-	0.0%	-	0.0%	-	0.0%	-	0.0%	-	0.0%	-	4	19	-		0.0%
Single Family	-	0.0%	-	0.0%	-	0.0%	-	0.0%	-	0.0%	-	4	19	-	12.0	0.0%
YTD:	-	0.0%	-	0.0%	-	0.0%	-	0.0%	-	0.0%	-	4	19	-		0.0%
Townhouse	-	0.0%	-	0.0%	-	0.0%	-	0.0%	-	0.0%	-	-	-	-	-	0.0%
YTD:	-	0.0%	-	0.0%	-	0.0%	-	0.0%	-	0.0%	-	-	-	-	-	0.0%
Condominium	-	0.0%	-	0.0%	-	0.0%	-	0.0%	-	0.0%	-	-	-	-	-	0.0%
YTD:	-	0.0%	-	0.0%	-	0.0%	-	0.0%	-	0.0%	-	-	-	-	-	0.0%
<b>New Construction</b>																
Residential (SF/COND/TH)	-	0.0%	-	0.0%	-	0.0%	-	0.0%	-	0.0%	-	-	4	-	5.3	0.0%
YTD:	-	0.0%	-	0.0%	-	0.0%	-	0.0%	-	0.0%	-	-	4	-		0.0%
Single Family	-	0.0%	-	0.0%	-	0.0%	-	0.0%	-	0.0%	-	-	4	-	5.3	0.0%
YTD:	-	0.0%	-	0.0%	-	0.0%	-	0.0%	-	0.0%	-	-	4	-		0.0%
Townhouse	-	0.0%	-	0.0%	-	0.0%	-	0.0%	-	0.0%	-	-	-	-	-	0.0%
YTD:	-	0.0%	-	0.0%	-	0.0%	-	0.0%	-	0.0%	-	-	-	-	-	0.0%
Condominium	-	0.0%	-	0.0%	-	0.0%	-	0.0%	-	0.0%	-	-	-	-	-	0.0%
YTD:	-	0.0%	-	0.0%	-	0.0%	-	0.0%	-	0.0%	-	-	-	-	-	0.0%

\* Local Market Area Code: 404; Type: Census Place Group  
 \*\* Closed Sale counts for most recent 3 months are Preliminary.

Market Analysis By Local Market Area\*: Johnson City

Property Type	Closed Sales**	YoY%	Dollar Volume	YoY%	Average Price	YoY%	Median Price	YoY%	Price/Sqft	YoY%	DOM	New Listings	Active Listings	Pending Sales	Months Inventory	Close To OLP
<b>All(New and Existing)</b>																
Residential (SF/COND/TH)	1	0.0%	\$415,000	-13.5%	\$415,000	-13.5%	\$415,000	-13.5%	\$295	56.9%	114	-	4	5	2.4	93.3%
YTD:	1	0.0%	\$415,000	-13.5%	\$415,000	-13.5%	\$415,000	-13.5%	\$295	56.9%	114	-	4	5		93.3%
Single Family	1	0.0%	\$415,000	-13.5%	\$415,000	-13.5%	\$415,000	-13.5%	\$295	56.9%	114	-	4	5	2.4	93.3%
YTD:	1	0.0%	\$415,000	-13.5%	\$415,000	-13.5%	\$415,000	-13.5%	\$295	56.9%	114	-	4	5		93.3%
Townhouse	-	0.0%	-	0.0%	-	0.0%	-	0.0%	-	0.0%	-	-	-	-	-	0.0%
YTD:	-	0.0%	-	0.0%	-	0.0%	-	0.0%	-	0.0%	-	-	-	-	-	0.0%
Condominium	-	0.0%	-	0.0%	-	0.0%	-	0.0%	-	0.0%	-	-	-	-	-	0.0%
YTD:	-	0.0%	-	0.0%	-	0.0%	-	0.0%	-	0.0%	-	-	-	-	-	0.0%
<b>Existing Home</b>																
Residential (SF/COND/TH)	1	0.0%	\$415,000	-13.5%	\$415,000	-13.5%	\$415,000	-13.5%	\$295	56.9%	114	-	4	5	2.5	93.3%
YTD:	1	0.0%	\$415,000	-13.5%	\$415,000	-13.5%	\$415,000	-13.5%	\$295	56.9%	114	-	4	5		93.3%
Single Family	1	0.0%	\$415,000	-13.5%	\$415,000	-13.5%	\$415,000	-13.5%	\$295	56.9%	114	-	4	5	2.5	93.3%
YTD:	1	0.0%	\$415,000	-13.5%	\$415,000	-13.5%	\$415,000	-13.5%	\$295	56.9%	114	-	4	5		93.3%
Townhouse	-	0.0%	-	0.0%	-	0.0%	-	0.0%	-	0.0%	-	-	-	-	-	0.0%
YTD:	-	0.0%	-	0.0%	-	0.0%	-	0.0%	-	0.0%	-	-	-	-	-	0.0%
Condominium	-	0.0%	-	0.0%	-	0.0%	-	0.0%	-	0.0%	-	-	-	-	-	0.0%
YTD:	-	0.0%	-	0.0%	-	0.0%	-	0.0%	-	0.0%	-	-	-	-	-	0.0%
<b>New Construction</b>																
Residential (SF/COND/TH)	-	0.0%	-	0.0%	-	0.0%	-	0.0%	-	0.0%	-	-	-	-	-	0.0%
YTD:	-	0.0%	-	0.0%	-	0.0%	-	0.0%	-	0.0%	-	-	-	-	-	0.0%
Single Family	-	0.0%	-	0.0%	-	0.0%	-	0.0%	-	0.0%	-	-	-	-	-	0.0%
YTD:	-	0.0%	-	0.0%	-	0.0%	-	0.0%	-	0.0%	-	-	-	-	-	0.0%
Townhouse	-	0.0%	-	0.0%	-	0.0%	-	0.0%	-	0.0%	-	-	-	-	-	0.0%
YTD:	-	0.0%	-	0.0%	-	0.0%	-	0.0%	-	0.0%	-	-	-	-	-	0.0%
Condominium	-	0.0%	-	0.0%	-	0.0%	-	0.0%	-	0.0%	-	-	-	-	-	0.0%
YTD:	-	0.0%	-	0.0%	-	0.0%	-	0.0%	-	0.0%	-	-	-	-	-	0.0%

\* Local Market Area Code: 484; Type: Census Place Group  
 \*\* Closed Sale counts for most recent 3 months are Preliminary.



Market Analysis By Local Market Area\*: Junction

Property Type	Closed Sales**	YoY%	Dollar Volume	YoY%	Average Price	YoY%	Median Price	YoY%	Price/Sqft	YoY%	DOM	New Listings	Active Listings	Pending Sales	Months Inventory	Close To OLP
<b>All(New and Existing)</b>																
Residential (SF/COND/TH)	-	0.0%	-	0.0%	-	0.0%	-	0.0%	-	0.0%	-	-	2	-	4.0	0.0%
YTD:	-	0.0%	-	0.0%	-	0.0%	-	0.0%	-	0.0%	-	-	2	-		0.0%
Single Family	-	0.0%	-	0.0%	-	0.0%	-	0.0%	-	0.0%	-	-	2	-	4.0	0.0%
YTD:	-	0.0%	-	0.0%	-	0.0%	-	0.0%	-	0.0%	-	-	2	-		0.0%
Townhouse	-	0.0%	-	0.0%	-	0.0%	-	0.0%	-	0.0%	-	-	-	-	-	0.0%
YTD:	-	0.0%	-	0.0%	-	0.0%	-	0.0%	-	0.0%	-	-	-	-		0.0%
Condominium	-	0.0%	-	0.0%	-	0.0%	-	0.0%	-	0.0%	-	-	-	-	-	0.0%
YTD:	-	0.0%	-	0.0%	-	0.0%	-	0.0%	-	0.0%	-	-	-	-		0.0%
<b>Existing Home</b>																
Residential (SF/COND/TH)	-	0.0%	-	0.0%	-	0.0%	-	0.0%	-	0.0%	-	-	2	-	4.0	0.0%
YTD:	-	0.0%	-	0.0%	-	0.0%	-	0.0%	-	0.0%	-	-	2	-		0.0%
Single Family	-	0.0%	-	0.0%	-	0.0%	-	0.0%	-	0.0%	-	-	2	-	4.0	0.0%
YTD:	-	0.0%	-	0.0%	-	0.0%	-	0.0%	-	0.0%	-	-	2	-		0.0%
Townhouse	-	0.0%	-	0.0%	-	0.0%	-	0.0%	-	0.0%	-	-	-	-	-	0.0%
YTD:	-	0.0%	-	0.0%	-	0.0%	-	0.0%	-	0.0%	-	-	-	-		0.0%
Condominium	-	0.0%	-	0.0%	-	0.0%	-	0.0%	-	0.0%	-	-	-	-	-	0.0%
YTD:	-	0.0%	-	0.0%	-	0.0%	-	0.0%	-	0.0%	-	-	-	-		0.0%
<b>New Construction</b>																
Residential (SF/COND/TH)	-	0.0%	-	0.0%	-	0.0%	-	0.0%	-	0.0%	-	-	-	-	-	0.0%
YTD:	-	0.0%	-	0.0%	-	0.0%	-	0.0%	-	0.0%	-	-	-	-		0.0%
Single Family	-	0.0%	-	0.0%	-	0.0%	-	0.0%	-	0.0%	-	-	-	-	-	0.0%
YTD:	-	0.0%	-	0.0%	-	0.0%	-	0.0%	-	0.0%	-	-	-	-		0.0%
Townhouse	-	0.0%	-	0.0%	-	0.0%	-	0.0%	-	0.0%	-	-	-	-	-	0.0%
YTD:	-	0.0%	-	0.0%	-	0.0%	-	0.0%	-	0.0%	-	-	-	-		0.0%
Condominium	-	0.0%	-	0.0%	-	0.0%	-	0.0%	-	0.0%	-	-	-	-	-	0.0%
YTD:	-	0.0%	-	0.0%	-	0.0%	-	0.0%	-	0.0%	-	-	-	-		0.0%

\* Local Market Area Code: 490; Type: Census Place Group  
 \*\* Closed Sale counts for most recent 3 months are Preliminary.

Market Analysis By Local Market Area\*: Mason

Property Type	Closed Sales**	YoY%	Dollar Volume	YoY%	Average Price	YoY%	Median Price	YoY%	Price/Sqft	YoY%	DOM	New Listings	Active Listings	Pending Sales	Months Inventory	Close To OLP
<b>All(New and Existing)</b>																
Residential (SF/COND/TH)	1	100.0%	\$295,000	100.0%	\$295,000	100.0%	\$295,000	100.0%	\$175	100.0%	42	1	14	1	6.2	100.0%
YTD:	1	100.0%	\$295,000	100.0%	\$295,000	100.0%	\$295,000	100.0%	\$175	100.0%	42	1	14	1		100.0%
Single Family	1	100.0%	\$295,000	100.0%	\$295,000	100.0%	\$295,000	100.0%	\$175	100.0%	42	1	14	1	6.2	100.0%
YTD:	1	100.0%	\$295,000	100.0%	\$295,000	100.0%	\$295,000	100.0%	\$175	100.0%	42	1	14	1		100.0%
Townhouse	-	0.0%	-	0.0%	-	0.0%	-	0.0%	-	0.0%	-	-	-	-	-	0.0%
YTD:	-	0.0%	-	0.0%	-	0.0%	-	0.0%	-	0.0%	-	-	-	-	-	0.0%
Condominium	-	0.0%	-	0.0%	-	0.0%	-	0.0%	-	0.0%	-	-	-	-	-	0.0%
YTD:	-	0.0%	-	0.0%	-	0.0%	-	0.0%	-	0.0%	-	-	-	-	-	0.0%
<b>Existing Home</b>																
Residential (SF/COND/TH)	1	100.0%	\$295,000	100.0%	\$295,000	100.0%	\$295,000	100.0%	\$175	100.0%	42	1	14	1	6.2	100.0%
YTD:	1	100.0%	\$295,000	100.0%	\$295,000	100.0%	\$295,000	100.0%	\$175	100.0%	42	1	14	1		100.0%
Single Family	1	100.0%	\$295,000	100.0%	\$295,000	100.0%	\$295,000	100.0%	\$175	100.0%	42	1	14	1	6.2	100.0%
YTD:	1	100.0%	\$295,000	100.0%	\$295,000	100.0%	\$295,000	100.0%	\$175	100.0%	42	1	14	1		100.0%
Townhouse	-	0.0%	-	0.0%	-	0.0%	-	0.0%	-	0.0%	-	-	-	-	-	0.0%
YTD:	-	0.0%	-	0.0%	-	0.0%	-	0.0%	-	0.0%	-	-	-	-	-	0.0%
Condominium	-	0.0%	-	0.0%	-	0.0%	-	0.0%	-	0.0%	-	-	-	-	-	0.0%
YTD:	-	0.0%	-	0.0%	-	0.0%	-	0.0%	-	0.0%	-	-	-	-	-	0.0%
<b>New Construction</b>																
Residential (SF/COND/TH)	-	0.0%	-	0.0%	-	0.0%	-	0.0%	-	0.0%	-	-	-	-	-	0.0%
YTD:	-	0.0%	-	0.0%	-	0.0%	-	0.0%	-	0.0%	-	-	-	-	-	0.0%
Single Family	-	0.0%	-	0.0%	-	0.0%	-	0.0%	-	0.0%	-	-	-	-	-	0.0%
YTD:	-	0.0%	-	0.0%	-	0.0%	-	0.0%	-	0.0%	-	-	-	-	-	0.0%
Townhouse	-	0.0%	-	0.0%	-	0.0%	-	0.0%	-	0.0%	-	-	-	-	-	0.0%
YTD:	-	0.0%	-	0.0%	-	0.0%	-	0.0%	-	0.0%	-	-	-	-	-	0.0%
Condominium	-	0.0%	-	0.0%	-	0.0%	-	0.0%	-	0.0%	-	-	-	-	-	0.0%
YTD:	-	0.0%	-	0.0%	-	0.0%	-	0.0%	-	0.0%	-	-	-	-	-	0.0%

\* Local Market Area Code: 620; Type: Census Place Group  
 \*\* Closed Sale counts for most recent 3 months are Preliminary.

Market Analysis By Local Market Area\*: Round Mountain

Property Type	Closed Sales**	YoY%	Dollar Volume	YoY%	Average Price	YoY%	Median Price	YoY%	Price/Sqft	YoY%	DOM	New Listings	Active Listings	Pending Sales	Months Inventory	Close To OLP
<b>All(New and Existing)</b>																
Residential (SF/COND/TH)	-	0.0%	-	0.0%	-	0.0%	-	0.0%	-	0.0%	-	2	3	-	36.0	0.0%
YTD:	-	0.0%	-	0.0%	-	0.0%	-	0.0%	-	0.0%	-	2	3	-		0.0%
Single Family	-	0.0%	-	0.0%	-	0.0%	-	0.0%	-	0.0%	-	2	3	-	36.0	0.0%
YTD:	-	0.0%	-	0.0%	-	0.0%	-	0.0%	-	0.0%	-	2	3	-		0.0%
Townhouse	-	0.0%	-	0.0%	-	0.0%	-	0.0%	-	0.0%	-	-	-	-	-	0.0%
YTD:	-	0.0%	-	0.0%	-	0.0%	-	0.0%	-	0.0%	-	-	-	-	-	0.0%
Condominium	-	0.0%	-	0.0%	-	0.0%	-	0.0%	-	0.0%	-	-	-	-	-	0.0%
YTD:	-	0.0%	-	0.0%	-	0.0%	-	0.0%	-	0.0%	-	-	-	-	-	0.0%
<b>Existing Home</b>																
Residential (SF/COND/TH)	-	0.0%	-	0.0%	-	0.0%	-	0.0%	-	0.0%	-	1	2	-	-	0.0%
YTD:	-	0.0%	-	0.0%	-	0.0%	-	0.0%	-	0.0%	-	1	2	-		0.0%
Single Family	-	0.0%	-	0.0%	-	0.0%	-	0.0%	-	0.0%	-	1	2	-	-	0.0%
YTD:	-	0.0%	-	0.0%	-	0.0%	-	0.0%	-	0.0%	-	1	2	-		0.0%
Townhouse	-	0.0%	-	0.0%	-	0.0%	-	0.0%	-	0.0%	-	-	-	-	-	0.0%
YTD:	-	0.0%	-	0.0%	-	0.0%	-	0.0%	-	0.0%	-	-	-	-	-	0.0%
Condominium	-	0.0%	-	0.0%	-	0.0%	-	0.0%	-	0.0%	-	-	-	-	-	0.0%
YTD:	-	0.0%	-	0.0%	-	0.0%	-	0.0%	-	0.0%	-	-	-	-	-	0.0%
<b>New Construction</b>																
Residential (SF/COND/TH)	-	0.0%	-	0.0%	-	0.0%	-	0.0%	-	0.0%	-	1	1	-	12.0	0.0%
YTD:	-	0.0%	-	0.0%	-	0.0%	-	0.0%	-	0.0%	-	1	1	-		0.0%
Single Family	-	0.0%	-	0.0%	-	0.0%	-	0.0%	-	0.0%	-	1	1	-	12.0	0.0%
YTD:	-	0.0%	-	0.0%	-	0.0%	-	0.0%	-	0.0%	-	1	1	-		0.0%
Townhouse	-	0.0%	-	0.0%	-	0.0%	-	0.0%	-	0.0%	-	-	-	-	-	0.0%
YTD:	-	0.0%	-	0.0%	-	0.0%	-	0.0%	-	0.0%	-	-	-	-	-	0.0%
Condominium	-	0.0%	-	0.0%	-	0.0%	-	0.0%	-	0.0%	-	-	-	-	-	0.0%
YTD:	-	0.0%	-	0.0%	-	0.0%	-	0.0%	-	0.0%	-	-	-	-	-	0.0%

\* Local Market Area Code: 871; Type: Census Place Group  
 \*\* Closed Sale counts for most recent 3 months are Preliminary.

Market Analysis By Local Market Area\*: Stonewall

Property Type	Closed Sales**	YoY%	Dollar Volume	YoY%	Average Price	YoY%	Median Price	YoY%	Price/Sqft	YoY%	DOM	New Listings	Active Listings	Pending Sales	Months Inventory	Close To OLP
<b>All(New and Existing)</b>																
Residential (SF/COND/TH)	1	100.0%	\$265,000	100.0%	\$265,000	100.0%	\$265,000	100.0%	\$221	100.0%	160	-	2	-	8.0	83.1%
YTD:	1	100.0%	\$265,000	100.0%	\$265,000	100.0%	\$265,000	100.0%	\$221	100.0%	160	-	2	-		83.1%
Single Family	1	100.0%	\$265,000	100.0%	\$265,000	100.0%	\$265,000	100.0%	\$221	100.0%	160	-	2	-	8.0	83.1%
YTD:	1	100.0%	\$265,000	100.0%	\$265,000	100.0%	\$265,000	100.0%	\$221	100.0%	160	-	2	-		83.1%
Townhouse	-	0.0%	-	0.0%	-	0.0%	-	0.0%	-	0.0%	-	-	-	-	-	0.0%
YTD:	-	0.0%	-	0.0%	-	0.0%	-	0.0%	-	0.0%	-	-	-	-	-	0.0%
Condominium	-	0.0%	-	0.0%	-	0.0%	-	0.0%	-	0.0%	-	-	-	-	-	0.0%
YTD:	-	0.0%	-	0.0%	-	0.0%	-	0.0%	-	0.0%	-	-	-	-	-	0.0%
<b>Existing Home</b>																
Residential (SF/COND/TH)	1	100.0%	\$265,000	100.0%	\$265,000	100.0%	\$265,000	100.0%	\$221	100.0%	160	-	2	-	8.0	83.1%
YTD:	1	100.0%	\$265,000	100.0%	\$265,000	100.0%	\$265,000	100.0%	\$221	100.0%	160	-	2	-		83.1%
Single Family	1	100.0%	\$265,000	100.0%	\$265,000	100.0%	\$265,000	100.0%	\$221	100.0%	160	-	2	-	8.0	83.1%
YTD:	1	100.0%	\$265,000	100.0%	\$265,000	100.0%	\$265,000	100.0%	\$221	100.0%	160	-	2	-		83.1%
Townhouse	-	0.0%	-	0.0%	-	0.0%	-	0.0%	-	0.0%	-	-	-	-	-	0.0%
YTD:	-	0.0%	-	0.0%	-	0.0%	-	0.0%	-	0.0%	-	-	-	-	-	0.0%
Condominium	-	0.0%	-	0.0%	-	0.0%	-	0.0%	-	0.0%	-	-	-	-	-	0.0%
YTD:	-	0.0%	-	0.0%	-	0.0%	-	0.0%	-	0.0%	-	-	-	-	-	0.0%
<b>New Construction</b>																
Residential (SF/COND/TH)	-	0.0%	-	0.0%	-	0.0%	-	0.0%	-	0.0%	-	-	-	-	-	0.0%
YTD:	-	0.0%	-	0.0%	-	0.0%	-	0.0%	-	0.0%	-	-	-	-	-	0.0%
Single Family	-	0.0%	-	0.0%	-	0.0%	-	0.0%	-	0.0%	-	-	-	-	-	0.0%
YTD:	-	0.0%	-	0.0%	-	0.0%	-	0.0%	-	0.0%	-	-	-	-	-	0.0%
Townhouse	-	0.0%	-	0.0%	-	0.0%	-	0.0%	-	0.0%	-	-	-	-	-	0.0%
YTD:	-	0.0%	-	0.0%	-	0.0%	-	0.0%	-	0.0%	-	-	-	-	-	0.0%
Condominium	-	0.0%	-	0.0%	-	0.0%	-	0.0%	-	0.0%	-	-	-	-	-	0.0%
YTD:	-	0.0%	-	0.0%	-	0.0%	-	0.0%	-	0.0%	-	-	-	-	-	0.0%

\* Local Market Area Code: 966; Type: Census Place Group  
 \*\* Closed Sale counts for most recent 3 months are Preliminary.

