

Market Analysis By State: Texas

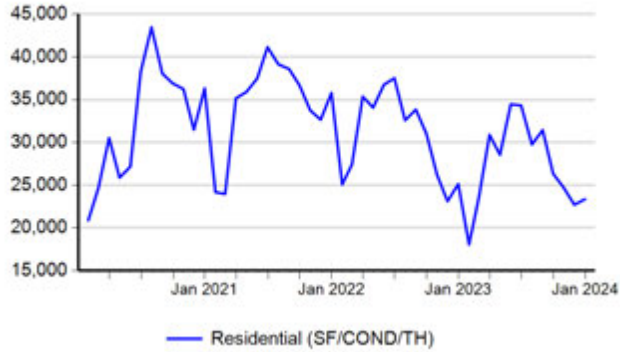
Property Type	Closed Sales*	YoY%	Dollar Volume	YoY%	Average Price	YoY%	Median Price	YoY%	Price/Sqft	YoY%	DOM	New Listings	Active Listings	Pending Sales	Months Inventory	Close To OLP
All(New and Existing)																
Residential (SF/COND/TH)	23,348	-7.0%	\$9,635,407,470	-3.6%	\$412,687	3.7%	\$335,000	1.4%	\$187	1.7%	62	27,047	93,733	20,669	3.4	93.7%
YTD:	327,997	-10.9%	\$135,562,223,105	-10.9%	\$413,303	0.0%	\$335,000	-1.5%	\$189	-1.0%	55	483,891	89,227	327,063		95.1%
Single Family	22,119	-6.5%	\$9,203,231,759	-3.2%	\$416,078	3.6%	\$339,000	1.2%	\$184	2.0%	62	25,309	87,286	19,477	3.4	93.7%
YTD:	308,122	-10.4%	\$128,705,455,593	-10.5%	\$417,709	-0.2%	\$339,500	-1.6%	\$186	-0.9%	55	451,507	83,207	307,316		95.0%
Townhouse	575	-14.9%	\$200,725,874	-14.2%	\$349,088	0.8%	\$308,995	-3.1%	\$189	-2.0%	55	729	2,399	613	3.3	94.6%
YTD:	8,608	-14.5%	\$3,040,077,670	-14.6%	\$353,169	0.0%	\$325,000	0.6%	\$194	1.0%	51	13,399	2,230	8,678		96.0%
Condominium	639	-17.9%	\$226,859,144	-11.4%	\$355,022	7.9%	\$245,000	2.9%	\$259	1.3%	62	1,009	4,048	579	4.3	93.7%
YTD:	11,237	-20.6%	\$3,807,801,323	-19.6%	\$338,863	1.3%	\$250,000	2.0%	\$263	-0.1%	50	18,985	3,789	11,069		95.2%
Existing Home																
Residential (SF/COND/TH)	16,206	-7.6%	\$6,483,937,946	-2.0%	\$400,095	6.0%	\$315,000	3.7%	\$184	3.2%	52	18,706	63,921	13,964	3.1	93.6%
YTD:	245,258	-18.1%	\$99,473,014,614	-18.5%	\$405,585	-0.5%	\$323,000	-2.1%	\$188	-1.1%	45	367,816	61,546	243,983		95.2%
Single Family	15,192	-7.1%	\$6,147,557,641	-1.6%	\$404,658	5.9%	\$319,000	3.2%	\$182	3.7%	52	17,318	58,868	13,034	3.1	93.5%
YTD:	228,280	-17.9%	\$93,882,075,702	-18.3%	\$411,258	-0.6%	\$325,000	-3.0%	\$185	-1.0%	45	340,646	56,857	227,261		95.2%
Townhouse	411	-11.8%	\$139,463,648	-7.7%	\$339,328	4.7%	\$295,000	9.5%	\$181	-0.6%	45	521	1,534	394	2.9	94.8%
YTD:	6,445	-22.4%	\$2,184,661,126	-23.8%	\$338,970	-1.7%	\$303,000	-0.7%	\$186	-0.6%	42	9,875	1,395	6,449		96.3%
Condominium	588	-17.5%	\$192,195,010	-12.7%	\$326,862	5.8%	\$223,750	-0.6%	\$248	-1.1%	59	867	3,519	536	4.0	93.8%
YTD:	10,504	-21.9%	\$3,397,236,619	-21.4%	\$323,423	0.6%	\$240,331	1.2%	\$257	-1.1%	47	17,295	3,292	10,273		95.3%
New Construction																
Residential (SF/COND/TH)	7,140	-5.9%	\$3,151,646,230	-6.6%	\$441,407	-0.7%	\$372,660	-2.2%	\$192	-1.4%	85	8,341	29,812	6,705	4.3	94.1%
YTD:	82,726	20.9%	\$36,086,904,026	20.2%	\$436,222	-0.6%	\$366,999	-2.6%	\$194	-1.9%	84	116,075	27,681	83,080		94.6%
Single Family	6,925	-5.3%	\$3,055,796,845	-6.1%	\$441,270	-0.9%	\$372,819	-1.9%	\$190	-1.5%	85	7,991	28,418	6,443	4.3	94.1%
YTD:	79,828	21.1%	\$34,820,039,237	20.5%	\$436,188	-0.5%	\$365,247	-2.7%	\$192	-2.0%	85	110,861	26,349	80,055		94.6%
Townhouse	165	-21.4%	\$61,625,956	-25.8%	\$373,491	-5.5%	\$329,500	-15.5%	\$207	-3.7%	83	208	865	219	4.8	94.1%
YTD:	2,163	22.6%	\$855,429,328	23.5%	\$395,483	0.8%	\$375,000	0.0%	\$217	1.2%	79	3,524	835	2,229		95.2%
Condominium	51	-21.5%	\$34,753,786	-2.7%	\$681,447	24.0%	\$544,900	22.2%	\$388	24.7%	100	142	529	43	8.7	91.9%
YTD:	733	2.8%	\$410,590,408	-1.0%	\$560,151	-3.7%	\$472,900	3.0%	\$353	5.5%	91	1,690	496	796		94.3%

* Closed Sale counts for most recent 3 months are Preliminary.

Trend Analysis By State: Texas

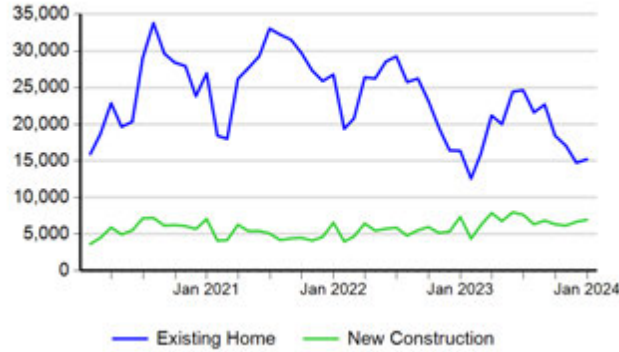
Residential, All (New and Existing)

Monthly Units Sold



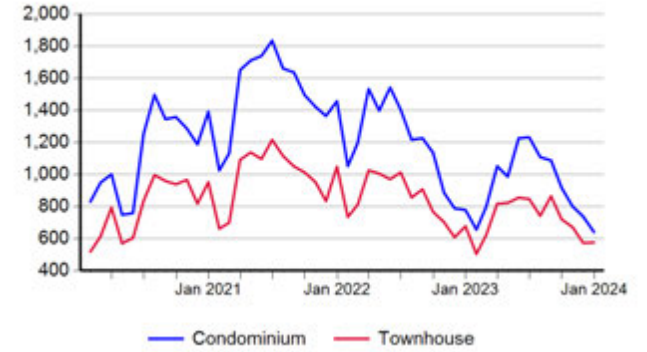
Single Family, New vs. Existing

Monthly Units Sold



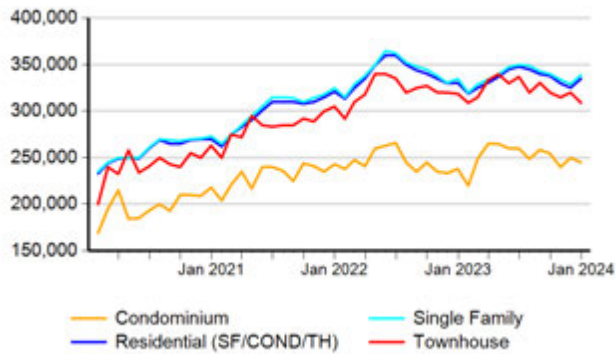
COND/TH, All (New and Existing)

Monthly Units Sold



All (New and Existing) Construction

Median Sale Price



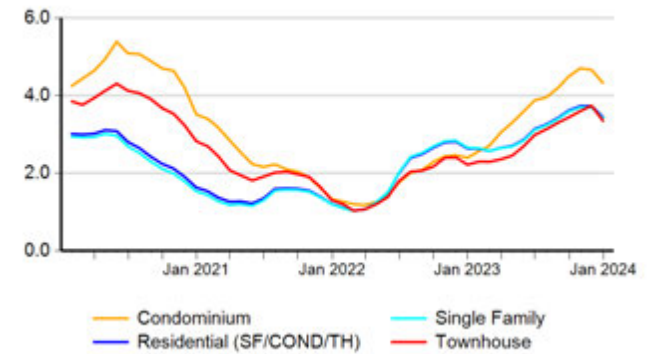
All (New and Existing) Construction

Average Close Price PSF



All (New and Existing) Construction

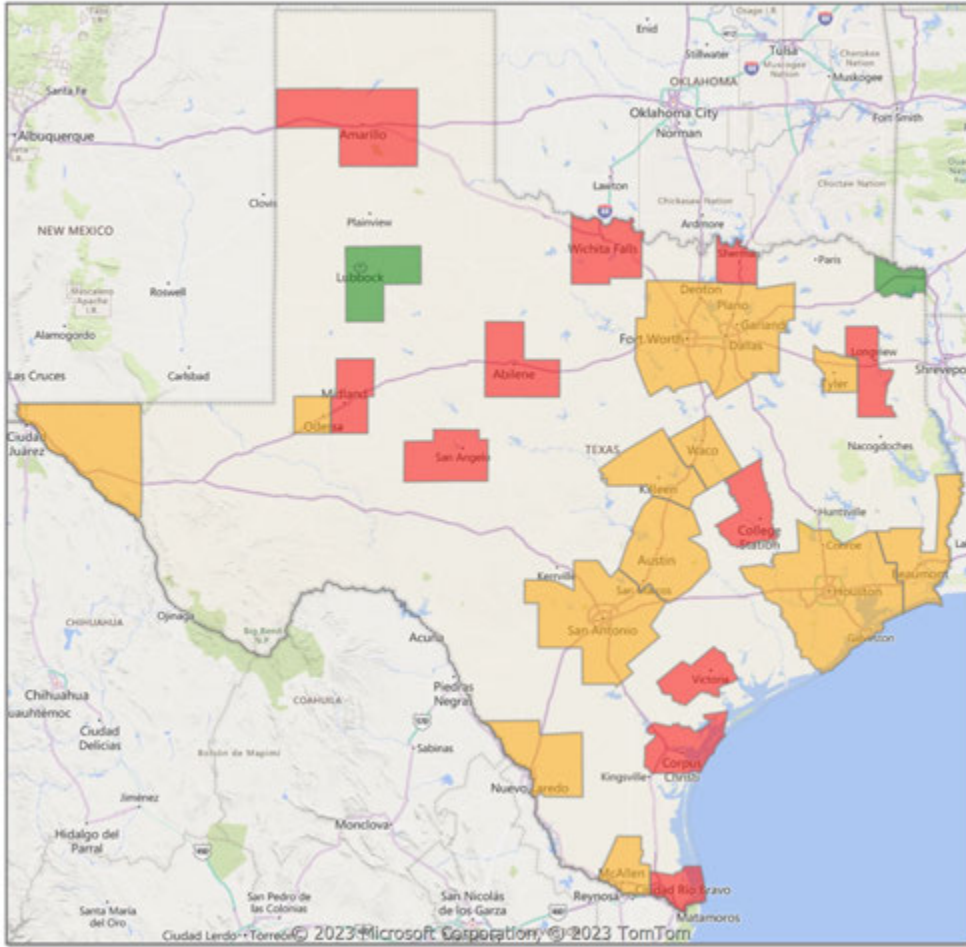
Months Inventory



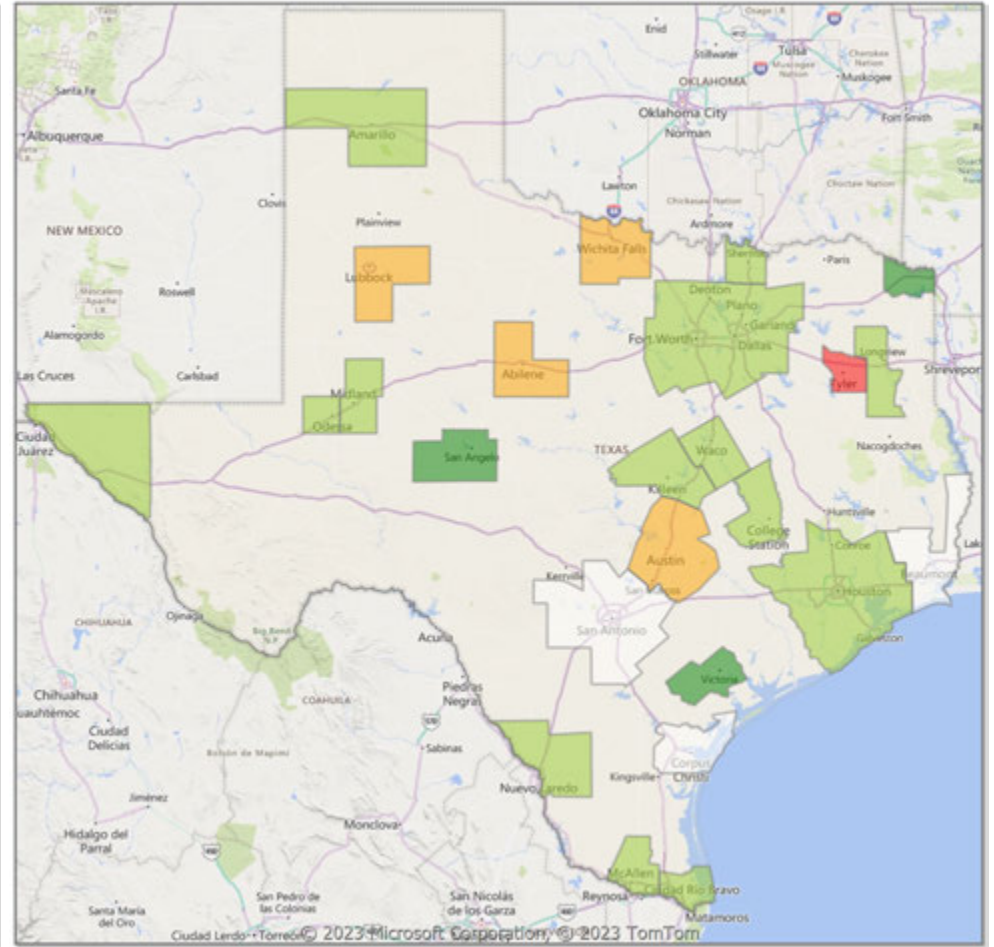
* Closed Sale counts for most recent 3 months are Preliminary.

Comparison By Metropolitan Statistical Area in Texas

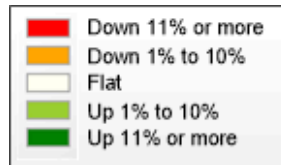
Residential* Closed Sales YoY Percentage Change



Residential* Avg Close Price Per SqFt YoY Percentage Change

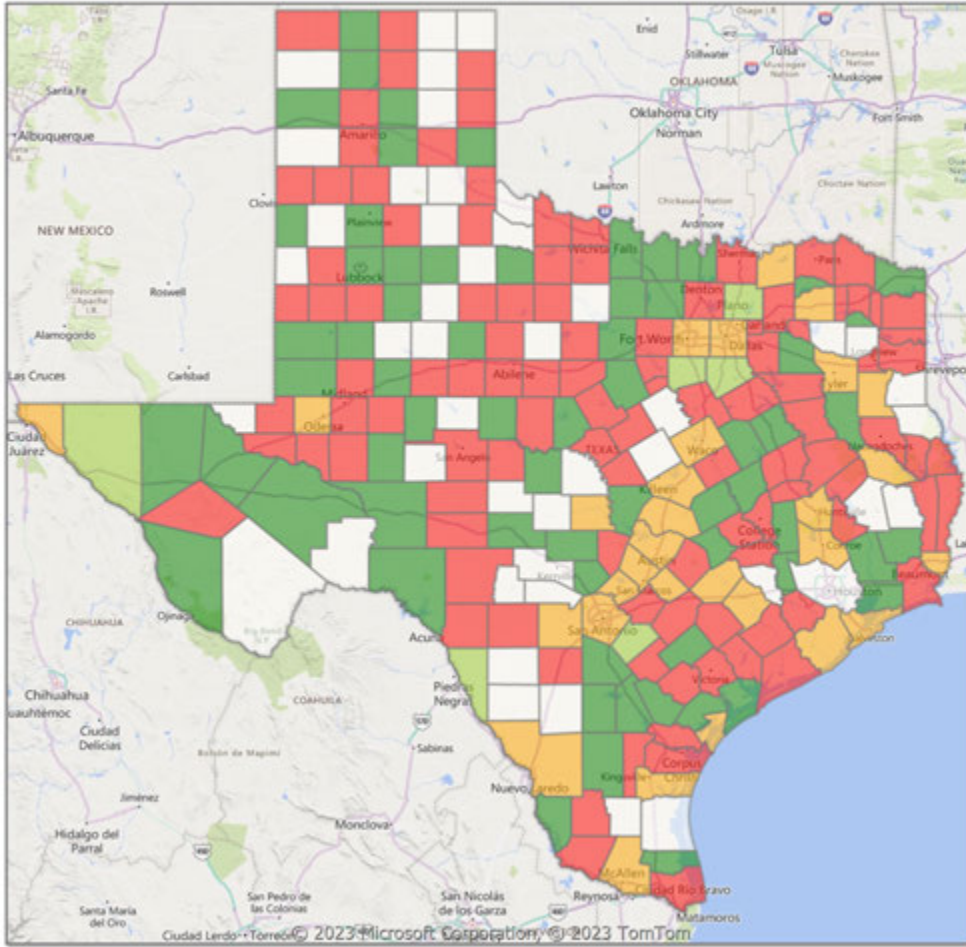


* Residential includes Single Family, Condominium and Townhouse.

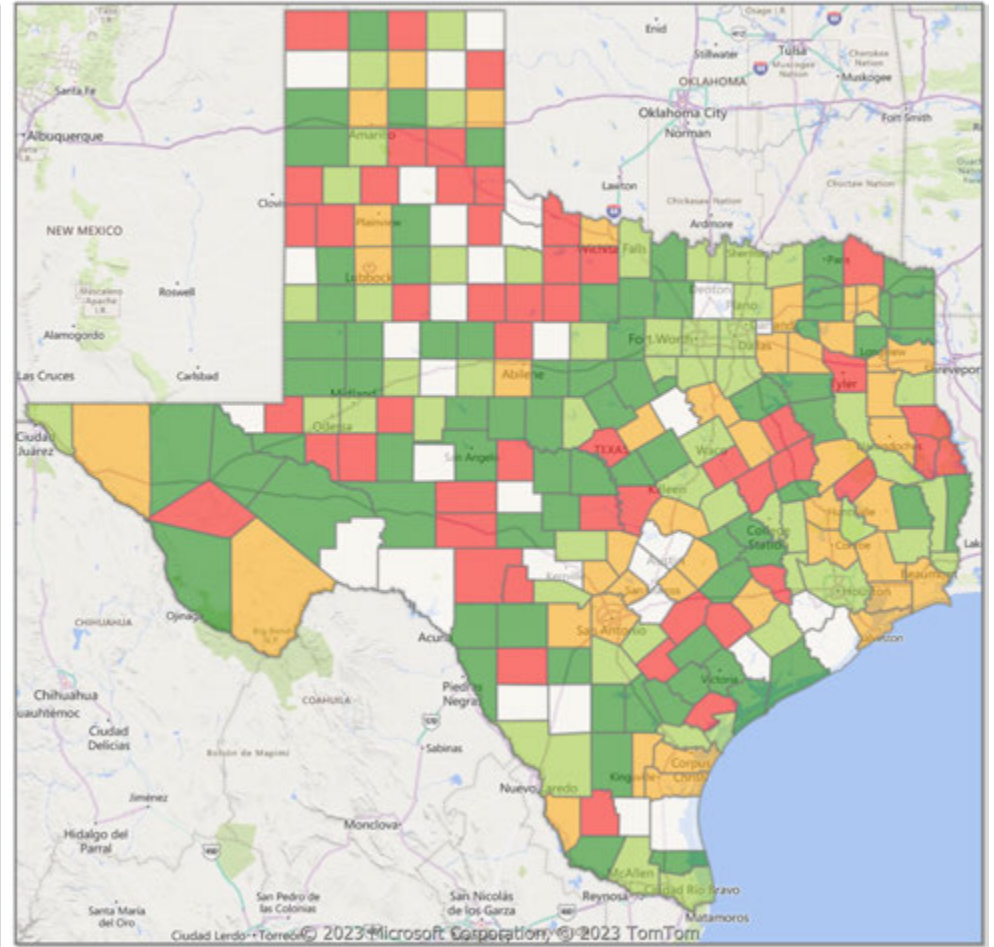


Comparison By County in Texas

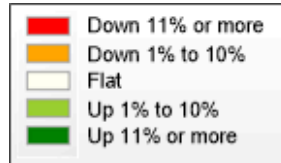
Residential* Closed Sales YoY Percentage Change



Residential* Avg Close Price Per SqFt YoY Percentage Change



* Residential includes Single Family, Condominium and Townhouse.



Market Analysis By County: Blanco County

Property Type	Closed Sales*	YoY%	Dollar Volume	YoY%	Average Price	YoY%	Median Price	YoY%	Price/Sqft	YoY%	DOM	New Listings	Active Listings	Pending Sales	Months Inventory	Close To OLP
All(New and Existing)																
Residential (SF/COND/TH)	8	-42.9%	\$2,843,429	-54.4%	\$355,429	-20.1%	\$278,000	-34.1%	\$209	-5.9%	96	17	142	9	9.8	91.3%
YTD:	174	-25.6%	\$101,976,850	-19.4%	\$586,074	8.4%	\$465,000	2.0%	\$282	4.6%	87	398	157	166		93.0%
Single Family	8	-42.9%	\$2,843,429	-54.4%	\$355,429	-20.1%	\$278,000	-34.1%	\$209	-5.9%	96	17	142	9	9.8	91.3%
YTD:	174	-25.3%	\$101,976,850	-18.5%	\$586,074	9.1%	\$465,000	2.2%	\$282	4.6%	87	398	157	166		93.0%
Townhouse	-	0.0%	-	0.0%	-	0.0%	-	0.0%	-	0.0%	-	-	-	-	-	0.0%
YTD:	-	0.0%	-	0.0%	-	0.0%	-	0.0%	-	0.0%	-	-	-	-	-	0.0%
Condominium	-	0.0%	-	0.0%	-	0.0%	-	0.0%	-	0.0%	-	-	-	-	-	0.0%
YTD:	-	-100.0%	-	-100.0%	-	-100.0%	-	-100.0%	-	0.0%	-	-	-	-	-	0.0%
Existing Home																
Residential (SF/COND/TH)	7	16.7%	\$2,313,500	-15.8%	\$330,500	-27.9%	\$276,500	-26.3%	\$207	0.4%	87	11	74	7	8.2	92.5%
YTD:	108	-20.0%	\$61,899,714	-25.4%	\$573,145	-6.8%	\$465,000	-6.1%	\$292	-0.2%	90	203	71	98		91.2%
Single Family	7	16.7%	\$2,313,500	-15.8%	\$330,500	-27.9%	\$276,500	-26.3%	\$207	0.4%	87	11	74	7	8.2	92.5%
YTD:	108	-19.4%	\$61,899,714	-24.1%	\$573,145	-5.9%	\$465,000	-6.1%	\$292	-0.2%	90	203	71	98		91.2%
Townhouse	-	0.0%	-	0.0%	-	0.0%	-	0.0%	-	0.0%	-	-	-	-	-	0.0%
YTD:	-	0.0%	-	0.0%	-	0.0%	-	0.0%	-	0.0%	-	-	-	-	-	0.0%
Condominium	-	0.0%	-	0.0%	-	0.0%	-	0.0%	-	0.0%	-	-	-	-	-	0.0%
YTD:	-	-100.0%	-	-100.0%	-	-100.0%	-	-100.0%	-	0.0%	-	-	-	-	-	0.0%
New Construction																
Residential (SF/COND/TH)	1	-87.5%	\$505,000	-85.5%	\$505,000	16.0%	\$505,000	16.4%	\$219	-6.4%	147	6	68	2	12.4	84.3%
YTD:	66	-33.3%	\$40,064,208	-8.0%	\$607,033	38.0%	\$468,900	9.1%	\$266	11.9%	83	195	85	68		95.9%
Single Family	1	-87.5%	\$505,000	-85.5%	\$505,000	16.0%	\$505,000	16.4%	\$219	-6.4%	147	6	68	2	12.4	84.3%
YTD:	66	-33.3%	\$40,064,208	-8.0%	\$607,033	38.0%	\$468,900	9.1%	\$266	11.9%	83	195	85	68		95.9%
Townhouse	-	0.0%	-	0.0%	-	0.0%	-	0.0%	-	0.0%	-	-	-	-	-	0.0%
YTD:	-	0.0%	-	0.0%	-	0.0%	-	0.0%	-	0.0%	-	-	-	-	-	0.0%
Condominium	-	0.0%	-	0.0%	-	0.0%	-	0.0%	-	0.0%	-	-	-	-	-	0.0%
YTD:	-	0.0%	-	0.0%	-	0.0%	-	0.0%	-	0.0%	-	-	-	-	-	0.0%

* Closed Sale counts for most recent 3 months are Preliminary.

Market Analysis By County: Gillespie County

Property Type	Closed Sales*	YoY%	Dollar Volume	YoY%	Average Price	YoY%	Median Price	YoY%	Price/Sqft	YoY%	DOM	New Listings	Active Listings	Pending Sales	Months Inventory	Close To OLP
All(New and Existing)																
Residential (SF/COND/TH)	28	21.7%	\$14,755,896	6.0%	\$526,996	-13.0%	\$449,000	-24.5%	\$353	1.5%	133	27	263	23	8.7	90.6%
YTD:	362	-14.8%	\$256,982,262	-19.4%	\$709,896	-5.4%	\$540,000	-10.0%	\$354	-4.8%	120	722	254	181		91.2%
Single Family	27	17.4%	\$14,493,704	4.1%	\$536,804	-11.3%	\$467,000	-21.5%	\$353	1.5%	136	27	248	22	8.3	90.2%
YTD:	357	-16.0%	\$254,513,288	-20.2%	\$712,922	-5.0%	\$538,950	-10.2%	\$356	-4.3%	118	680	247	176		91.3%
Townhouse	-	0.0%	-	0.0%	-	0.0%	-	0.0%	-	0.0%	-	-	-	-	-	0.0%
YTD:	4	100.0%	\$2,200,000	100.0%	\$550,000	100.0%	\$550,000	100.0%	\$194	100.0%	241	1	3	4		80.4%
Condominium	1	100.0%	\$272,000	100.0%	\$272,000	100.0%	\$272,000	100.0%	-	0.0%	57	-	15	1	180.0	98.9%
YTD:	1	100.0%	\$272,000	100.0%	\$272,000	100.0%	\$272,000	100.0%	-	0.0%	57	41	8	1		98.9%
Existing Home																
Residential (SF/COND/TH)	24	60.0%	\$12,904,591	19.0%	\$537,691	-25.6%	\$485,000	-35.3%	\$370	3.1%	119	23	228	22	9.1	91.0%
YTD:	301	-13.8%	\$221,745,170	-20.8%	\$736,695	-8.2%	\$558,250	-17.4%	\$368	-5.9%	115	637	223	156		90.1%
Single Family	23	53.3%	\$12,644,668	16.6%	\$549,768	-23.9%	\$491,250	-34.5%	\$370	3.1%	122	23	214	21	8.7	90.6%
YTD:	296	-15.2%	\$219,277,277	-21.7%	\$740,802	-7.7%	\$565,500	-16.3%	\$370	-5.3%	114	596	216	151		90.2%
Townhouse	-	0.0%	-	0.0%	-	0.0%	-	0.0%	-	0.0%	-	-	-	-	-	0.0%
YTD:	4	100.0%	\$2,200,000	100.0%	\$550,000	100.0%	\$550,000	100.0%	\$194	100.0%	241	1	3	4		80.4%
Condominium	1	100.0%	\$272,000	100.0%	\$272,000	100.0%	\$272,000	100.0%	-	0.0%	57	-	14	1	168.0	98.9%
YTD:	1	100.0%	\$272,000	100.0%	\$272,000	100.0%	\$272,000	100.0%	-	0.0%	57	40	8	1		98.9%
New Construction																
Residential (SF/COND/TH)	4	-50.0%	\$1,862,000	-39.6%	\$465,500	20.8%	\$445,250	33.7%	\$255	-21.4%	211	4	35	1	6.9	87.4%
YTD:	61	-19.7%	\$35,263,891	-9.2%	\$578,097	13.1%	\$517,275	7.3%	\$290	0.5%	142	85	31	25		96.9%
Single Family	4	-50.0%	\$1,862,000	-39.6%	\$465,500	20.8%	\$445,250	33.7%	\$255	-21.4%	211	4	34	1	6.7	87.4%
YTD:	61	-19.7%	\$35,263,891	-9.2%	\$578,097	13.1%	\$517,275	7.3%	\$290	0.5%	142	84	31	25		96.9%
Townhouse	-	0.0%	-	0.0%	-	0.0%	-	0.0%	-	0.0%	-	-	-	-	-	0.0%
YTD:	-	0.0%	-	0.0%	-	0.0%	-	0.0%	-	0.0%	-	-	-	-	-	0.0%
Condominium	-	0.0%	-	0.0%	-	0.0%	-	0.0%	-	0.0%	-	-	1	-	-	0.0%
YTD:	-	0.0%	-	0.0%	-	0.0%	-	0.0%	-	0.0%	-	1	1	-	-	0.0%

* Closed Sale counts for most recent 3 months are Preliminary.

Market Analysis By County: Kimble County

Property Type	Closed Sales*	YoY%	Dollar Volume	YoY%	Average Price	YoY%	Median Price	YoY%	Price/Sqft	YoY%	DOM	New Listings	Active Listings	Pending Sales	Months Inventory	Close To OLP
All(New and Existing)																
Residential (SF/COND/TH)	1	100.0%	\$218,860	100.0%	\$218,860	100.0%	\$218,860	100.0%	\$164	100.0%	392	-	11	2	13.2	76.8%
YTD:	10	-9.1%	\$3,333,731	-40.8%	\$333,373	-34.9%	\$220,991	-50.3%	\$279	8.4%	91	28	10	10		77.1%
Single Family	1	100.0%	\$218,860	100.0%	\$218,860	100.0%	\$218,860	100.0%	\$164	100.0%	392	-	11	2	13.2	76.8%
YTD:	10	-9.1%	\$3,333,731	-40.8%	\$333,373	-34.9%	\$220,991	-50.3%	\$279	8.4%	91	28	10	10		77.1%
Townhouse	-	0.0%	-	0.0%	-	0.0%	-	0.0%	-	0.0%	-	-	-	-	-	0.0%
YTD:	-	0.0%	-	0.0%	-	0.0%	-	0.0%	-	0.0%	-	-	-	-	-	0.0%
Condominium	-	0.0%	-	0.0%	-	0.0%	-	0.0%	-	0.0%	-	-	-	-	-	0.0%
YTD:	-	0.0%	-	0.0%	-	0.0%	-	0.0%	-	0.0%	-	-	-	-	-	0.0%
Existing Home																
Residential (SF/COND/TH)	1	100.0%	\$218,860	100.0%	\$218,860	100.0%	\$218,860	100.0%	\$164	100.0%	392	-	10	2	13.3	76.8%
YTD:	9	-10.0%	\$2,433,731	-42.5%	\$270,415	-36.1%	\$218,860	-49.7%	\$251	26.2%	90	26	9	9		76.2%
Single Family	1	100.0%	\$218,860	100.0%	\$218,860	100.0%	\$218,860	100.0%	\$164	100.0%	392	-	10	2	13.3	76.8%
YTD:	9	-10.0%	\$2,433,731	-42.5%	\$270,415	-36.1%	\$218,860	-49.7%	\$251	26.2%	90	26	9	9		76.2%
Townhouse	-	0.0%	-	0.0%	-	0.0%	-	0.0%	-	0.0%	-	-	-	-	-	0.0%
YTD:	-	0.0%	-	0.0%	-	0.0%	-	0.0%	-	0.0%	-	-	-	-	-	0.0%
Condominium	-	0.0%	-	0.0%	-	0.0%	-	0.0%	-	0.0%	-	-	-	-	-	0.0%
YTD:	-	0.0%	-	0.0%	-	0.0%	-	0.0%	-	0.0%	-	-	-	-	-	0.0%
New Construction																
Residential (SF/COND/TH)	-	0.0%	-	0.0%	-	0.0%	-	0.0%	-	0.0%	-	-	1	-	12.0	0.0%
YTD:	1	0.0%	\$900,000	-35.7%	\$900,000	-35.7%	\$900,000	-35.7%	\$533	-36.9%	94	2	1	1		81.8%
Single Family	-	0.0%	-	0.0%	-	0.0%	-	0.0%	-	0.0%	-	-	1	-	12.0	0.0%
YTD:	1	0.0%	\$900,000	-35.7%	\$900,000	-35.7%	\$900,000	-35.7%	\$533	-36.9%	94	2	1	1		81.8%
Townhouse	-	0.0%	-	0.0%	-	0.0%	-	0.0%	-	0.0%	-	-	-	-	-	0.0%
YTD:	-	0.0%	-	0.0%	-	0.0%	-	0.0%	-	0.0%	-	-	-	-	-	0.0%
Condominium	-	0.0%	-	0.0%	-	0.0%	-	0.0%	-	0.0%	-	-	-	-	-	0.0%
YTD:	-	0.0%	-	0.0%	-	0.0%	-	0.0%	-	0.0%	-	-	-	-	-	0.0%

* Closed Sale counts for most recent 3 months are Preliminary.

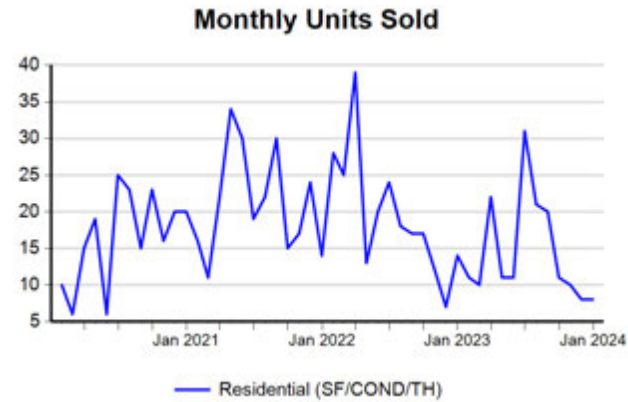
Market Analysis By County: Mason County

Property Type	Closed Sales*	YoY%	Dollar Volume	YoY%	Average Price	YoY%	Median Price	YoY%	Price/Sqft	YoY%	DOM	New Listings	Active Listings	Pending Sales	Months Inventory	Close To OLP
All(New and Existing)																
Residential (SF/COND/TH)	2	0.0%	\$445,000	53.2%	\$222,500	53.2%	\$222,500	53.2%	\$188	90.2%	132	2	25	1	9.4	81.2%
YTD:	32	-22.0%	\$10,078,750	-17.7%	\$314,961	5.5%	\$262,500	-19.2%	\$199	-8.5%	123	73	30	21		85.1%
Single Family	2	0.0%	\$445,000	53.2%	\$222,500	53.2%	\$222,500	53.2%	\$188	90.2%	132	2	25	1	9.4	81.2%
YTD:	32	-22.0%	\$10,078,750	-17.7%	\$314,961	5.5%	\$262,500	-19.2%	\$199	-8.5%	123	73	30	21		85.1%
Townhouse	-	0.0%	-	0.0%	-	0.0%	-	0.0%	-	0.0%	-	-	-	-	-	0.0%
YTD:	-	0.0%	-	0.0%	-	0.0%	-	0.0%	-	0.0%	-	-	-	-	-	0.0%
Condominium	-	0.0%	-	0.0%	-	0.0%	-	0.0%	-	0.0%	-	-	-	-	-	0.0%
YTD:	-	0.0%	-	0.0%	-	0.0%	-	0.0%	-	0.0%	-	-	-	-	-	0.0%
Existing Home																
Residential (SF/COND/TH)	2	0.0%	\$445,000	53.2%	\$222,500	53.2%	\$222,500	53.2%	\$188	90.2%	132	2	23	1	8.6	81.2%
YTD:	32	-15.8%	\$10,078,750	-8.4%	\$314,961	8.7%	\$262,500	-2.8%	\$199	-4.6%	123	71	29	21		85.1%
Single Family	2	0.0%	\$445,000	53.2%	\$222,500	53.2%	\$222,500	53.2%	\$188	90.2%	132	2	23	1	8.6	81.2%
YTD:	32	-15.8%	\$10,078,750	-8.4%	\$314,961	8.7%	\$262,500	-2.8%	\$199	-4.6%	123	71	29	21		85.1%
Townhouse	-	0.0%	-	0.0%	-	0.0%	-	0.0%	-	0.0%	-	-	-	-	-	0.0%
YTD:	-	0.0%	-	0.0%	-	0.0%	-	0.0%	-	0.0%	-	-	-	-	-	0.0%
Condominium	-	0.0%	-	0.0%	-	0.0%	-	0.0%	-	0.0%	-	-	-	-	-	0.0%
YTD:	-	0.0%	-	0.0%	-	0.0%	-	0.0%	-	0.0%	-	-	-	-	-	0.0%
New Construction																
Residential (SF/COND/TH)	-	0.0%	-	0.0%	-	0.0%	-	0.0%	-	0.0%	-	-	2	-	-	0.0%
YTD:	-	-100.0%	-	-100.0%	-	-100.0%	-	-100.0%	-	-100.0%	-	2	1	-		0.0%
Single Family	-	0.0%	-	0.0%	-	0.0%	-	0.0%	-	0.0%	-	-	2	-	-	0.0%
YTD:	-	-100.0%	-	-100.0%	-	-100.0%	-	-100.0%	-	-100.0%	-	2	1	-		0.0%
Townhouse	-	0.0%	-	0.0%	-	0.0%	-	0.0%	-	0.0%	-	-	-	-	-	0.0%
YTD:	-	0.0%	-	0.0%	-	0.0%	-	0.0%	-	0.0%	-	-	-	-	-	0.0%
Condominium	-	0.0%	-	0.0%	-	0.0%	-	0.0%	-	0.0%	-	-	-	-	-	0.0%
YTD:	-	0.0%	-	0.0%	-	0.0%	-	0.0%	-	0.0%	-	-	-	-	-	0.0%

* Closed Sale counts for most recent 3 months are Preliminary.

Trend Analysis By County: Blanco County

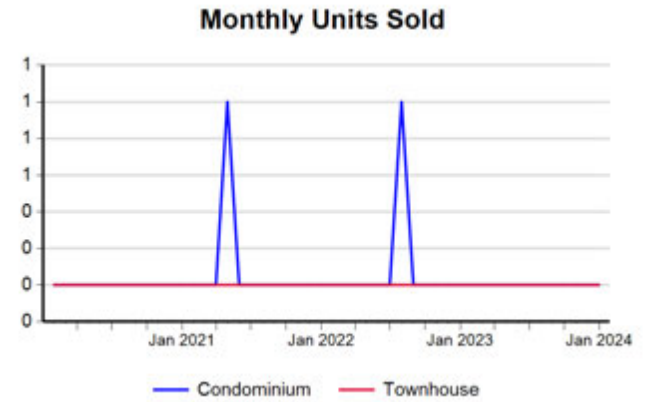
Residential, All (New and Existing)



Single Family, New vs. Existing



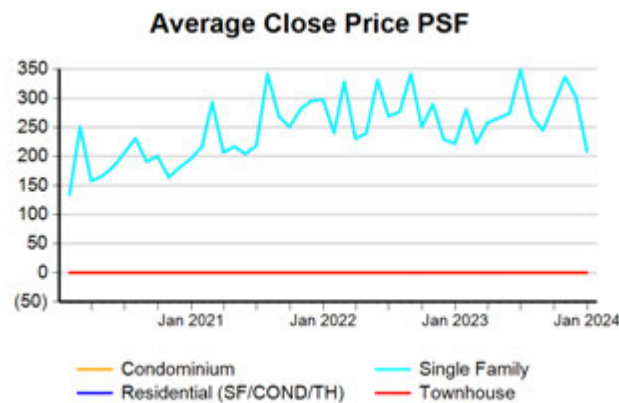
COND/TH, All (New and Existing)



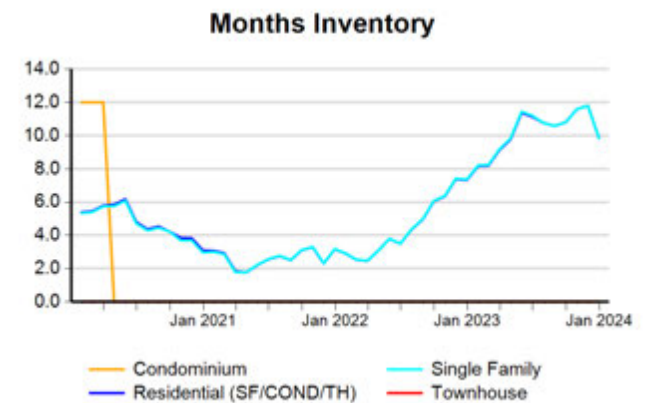
All (New and Existing) Construction



All (New and Existing) Construction



All (New and Existing) Construction



* Closed Sale counts for most recent 3 months are Preliminary.

Trend Analysis By County: Gillespie County

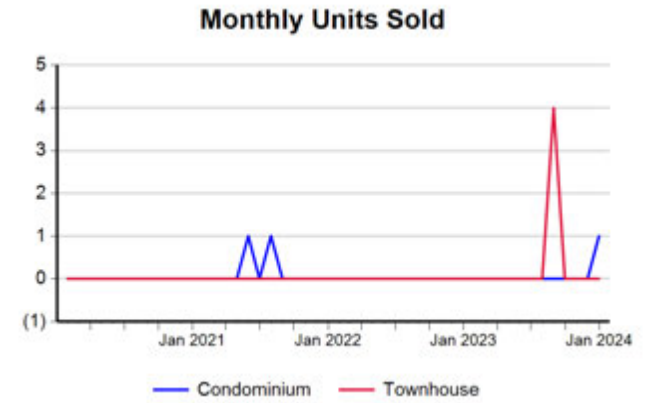
Residential, All (New and Existing)



Single Family, New vs. Existing



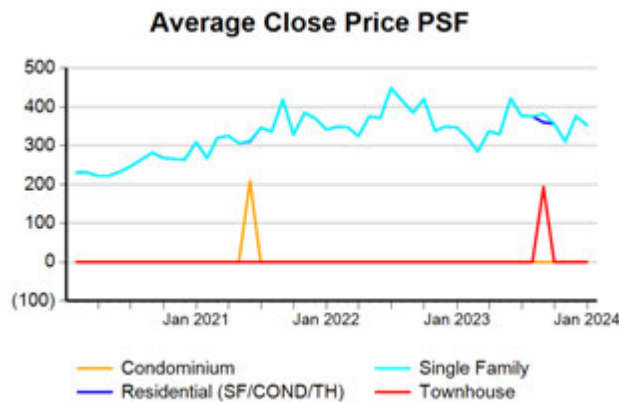
COND/TH, All (New and Existing)



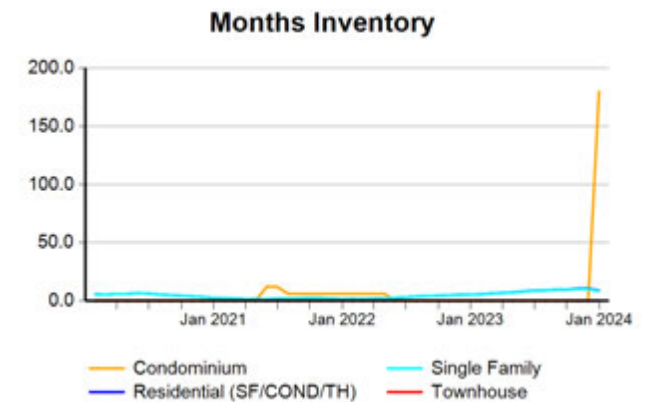
All (New and Existing) Construction



All (New and Existing) Construction



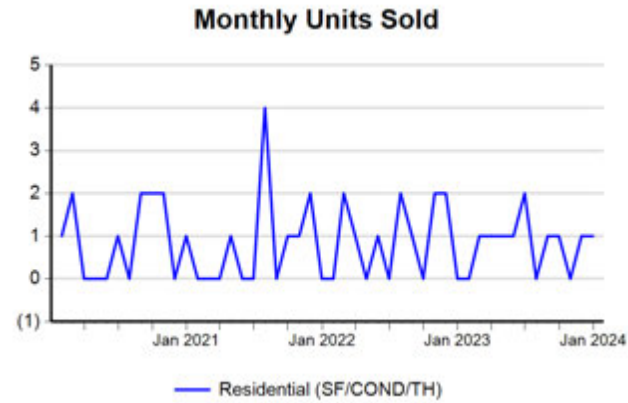
All (New and Existing) Construction



* Closed Sale counts for most recent 3 months are Preliminary.

Trend Analysis By County: Kimble County

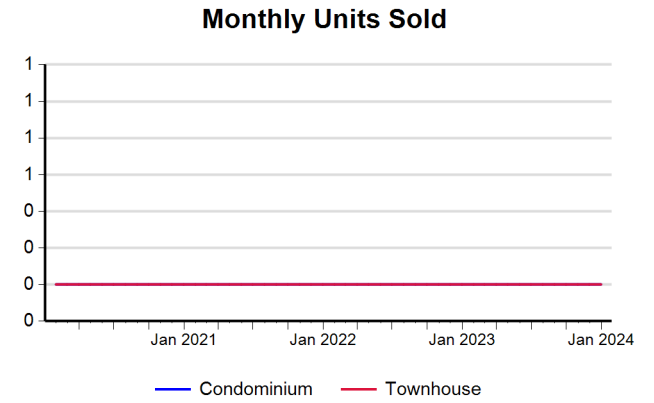
Residential, All (New and Existing)



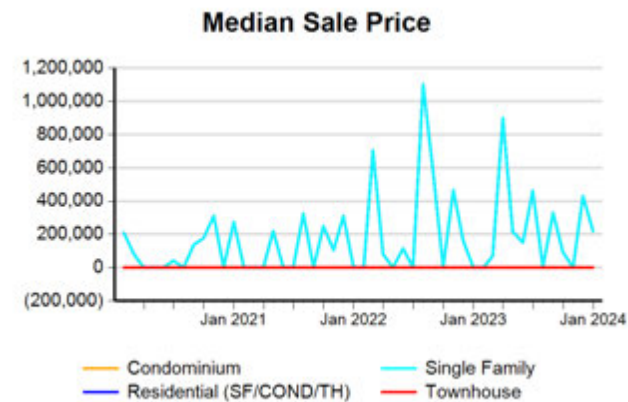
Single Family, New vs. Existing



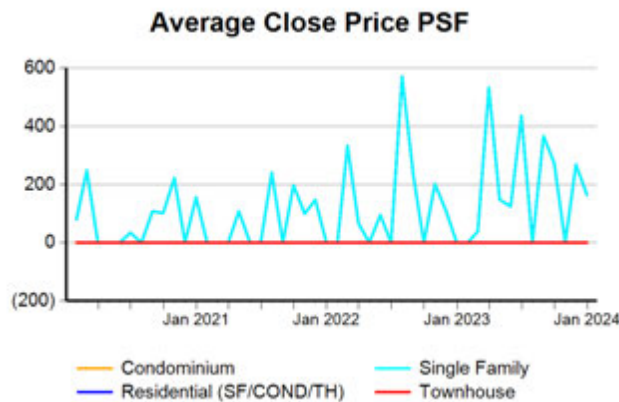
COND/TH, All (New and Existing)



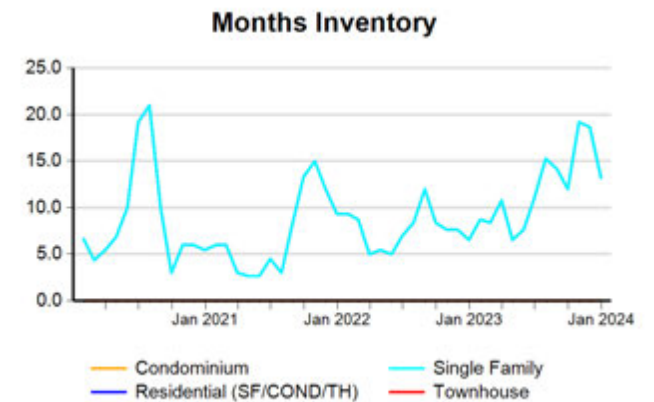
All (New and Existing) Construction



All (New and Existing) Construction



All (New and Existing) Construction



* Closed Sale counts for most recent 3 months are Preliminary.

Trend Analysis By County: Mason County

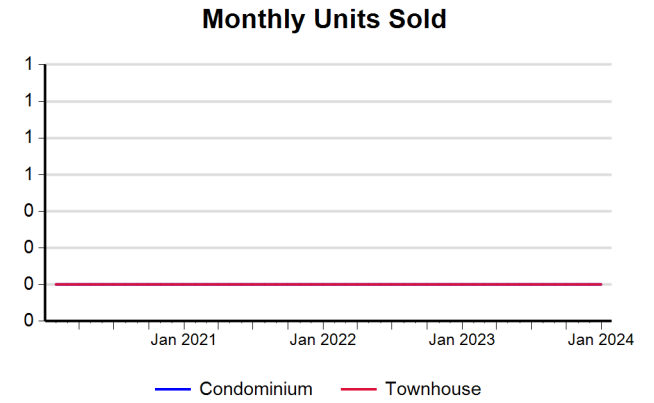
Residential, All (New and Existing)



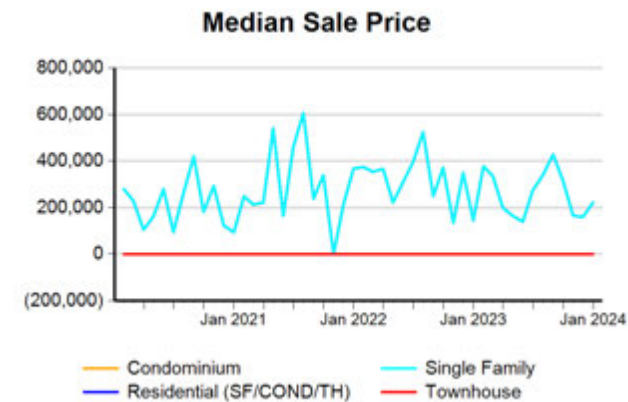
Single Family, New vs. Existing



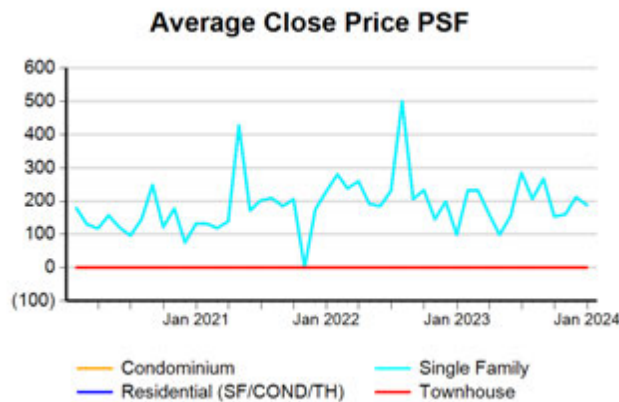
COND/TH, All (New and Existing)



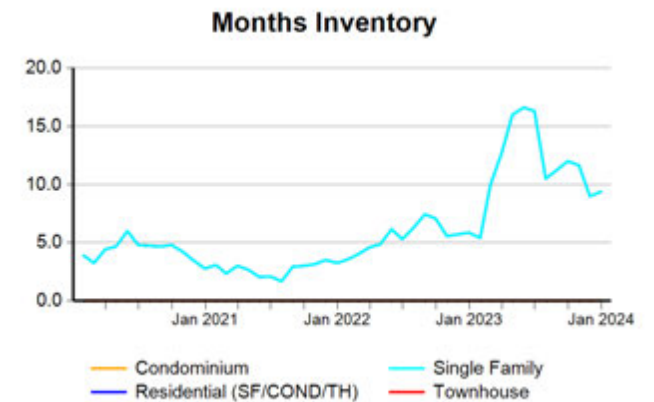
All (New and Existing) Construction



All (New and Existing) Construction



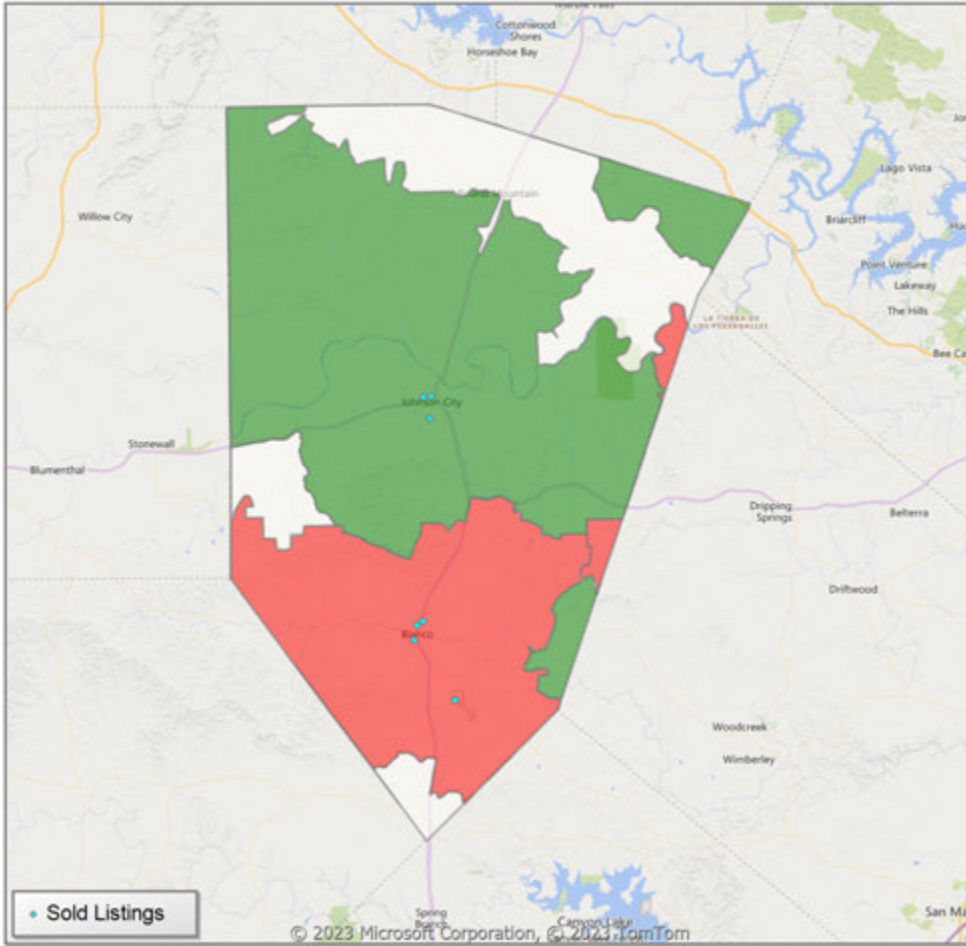
All (New and Existing) Construction



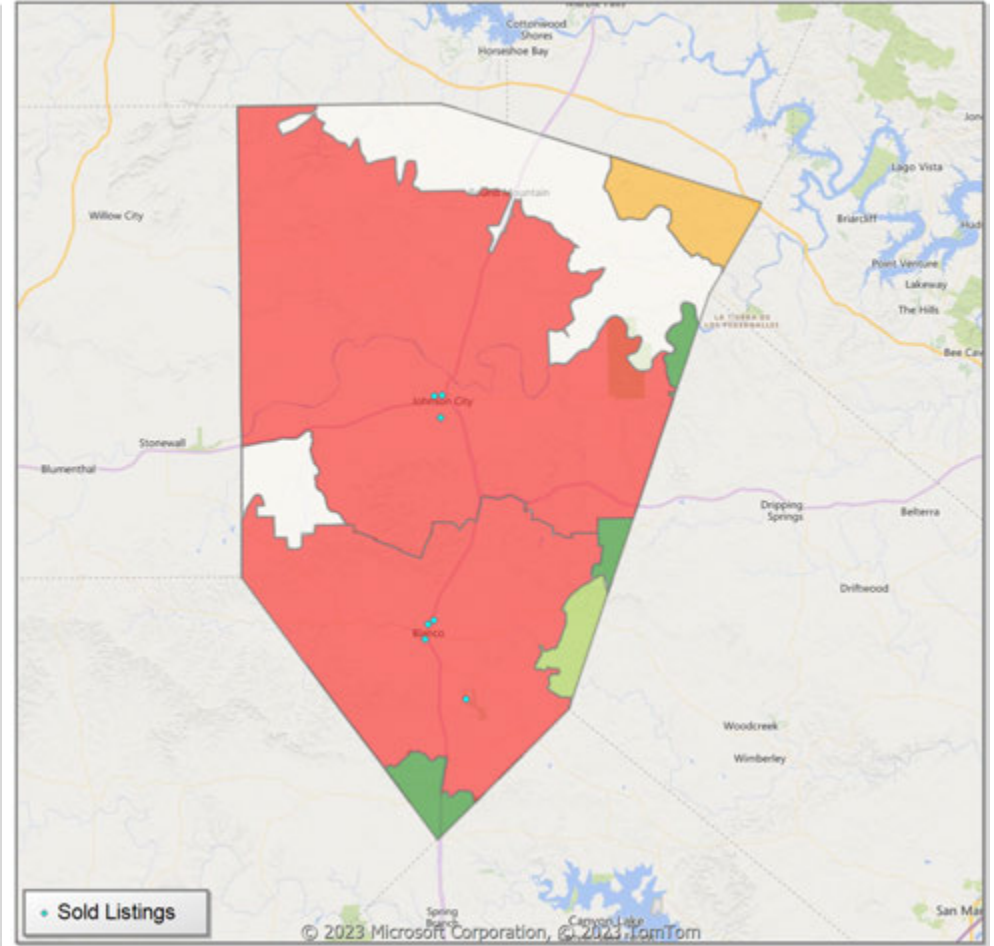
* Closed Sale counts for most recent 3 months are Preliminary.

Comparison By Zip Code* in Blanco County

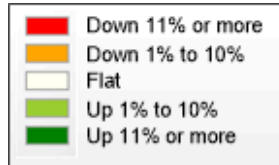
Residential Closed Sales
YoY Percentage Change**



Residential Avg Close Price Per SqFt
YoY Percentage Change**

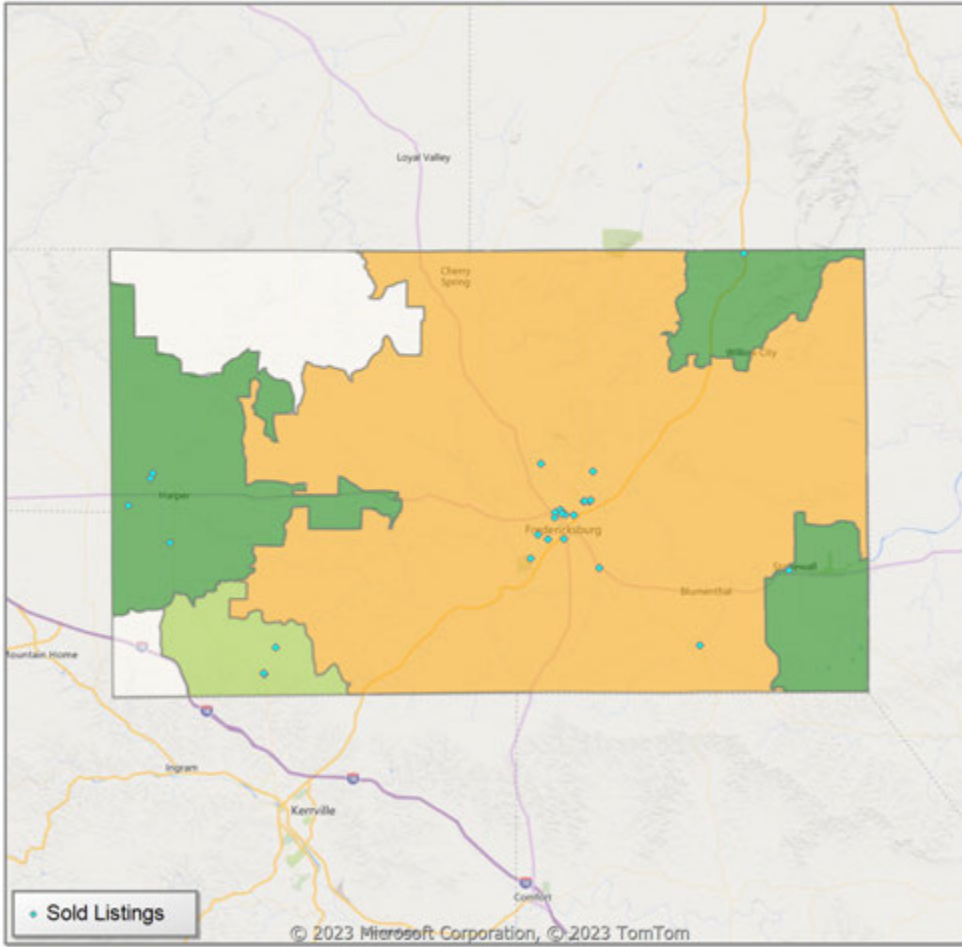


* US Census Zip Code Tabulation Area
** Residential includes Single Family, Condominium and Townhouse.

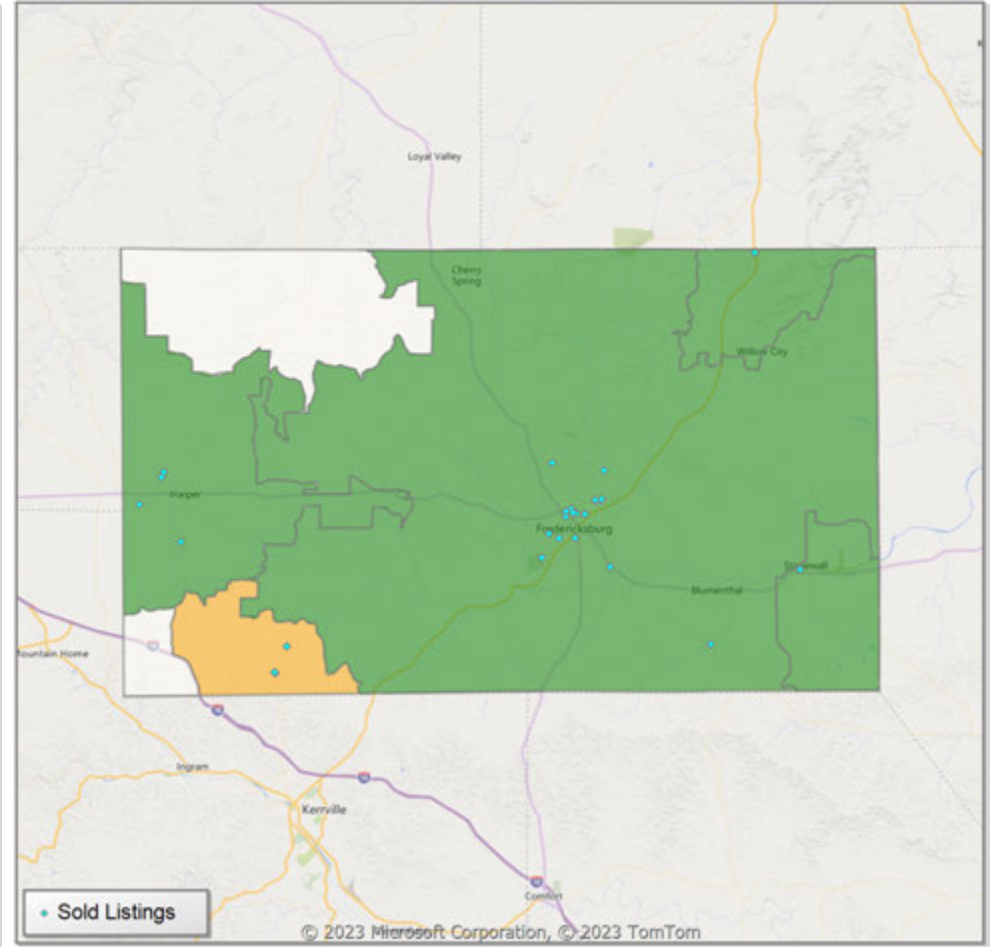


Comparison By Zip Code* in Gillespie County

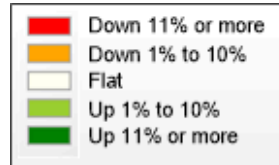
Residential Closed Sales
YoY Percentage Change**



Residential Avg Close Price Per SqFt
YoY Percentage Change**

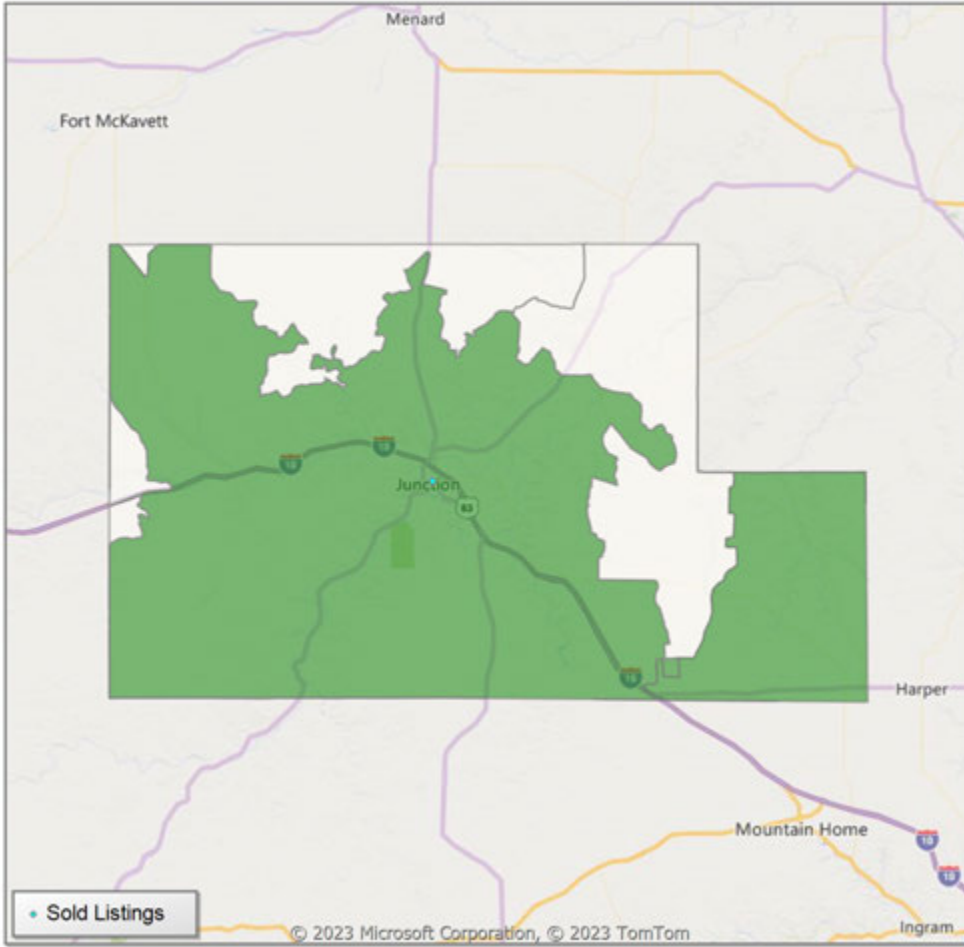


* US Census Zip Code Tabulation Area
** Residential includes Single Family, Condominium and Townhouse.

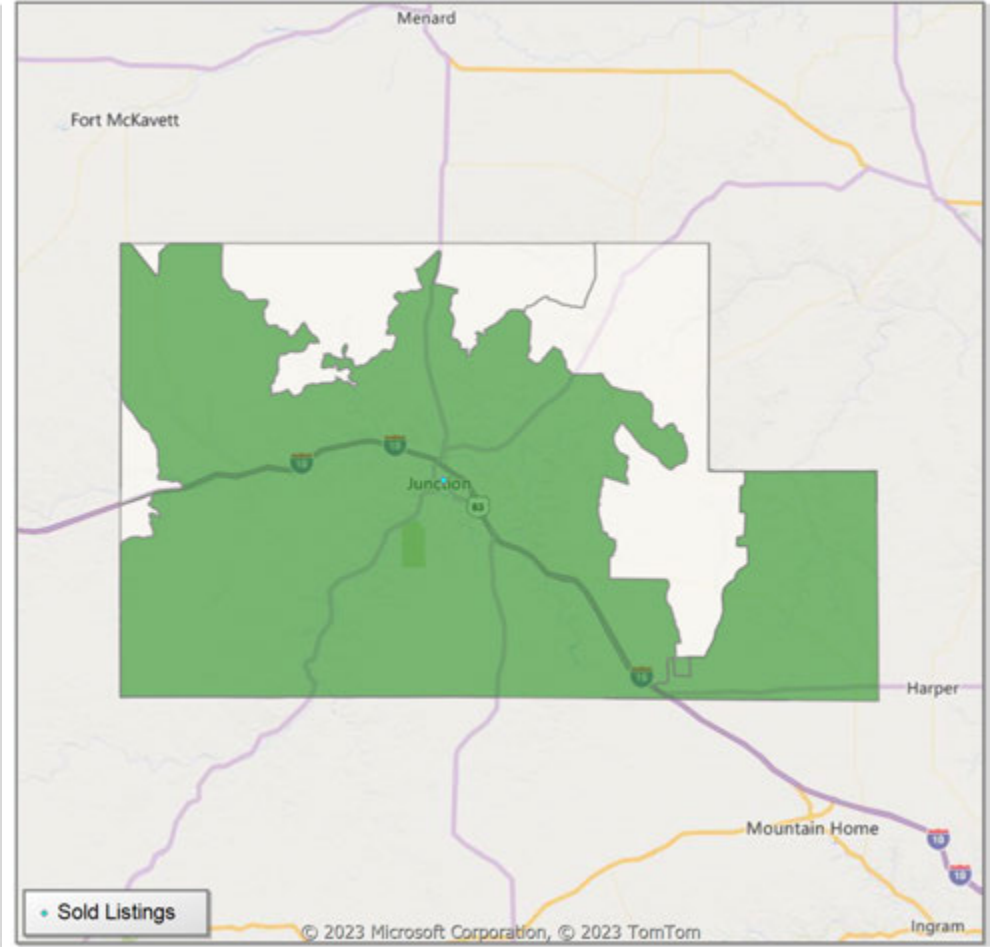


Comparison By Zip Code* in Kimble County

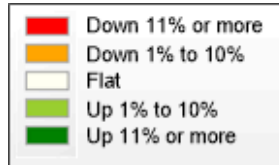
Residential Closed Sales
YoY Percentage Change**



Residential Avg Close Price Per SqFt
YoY Percentage Change**

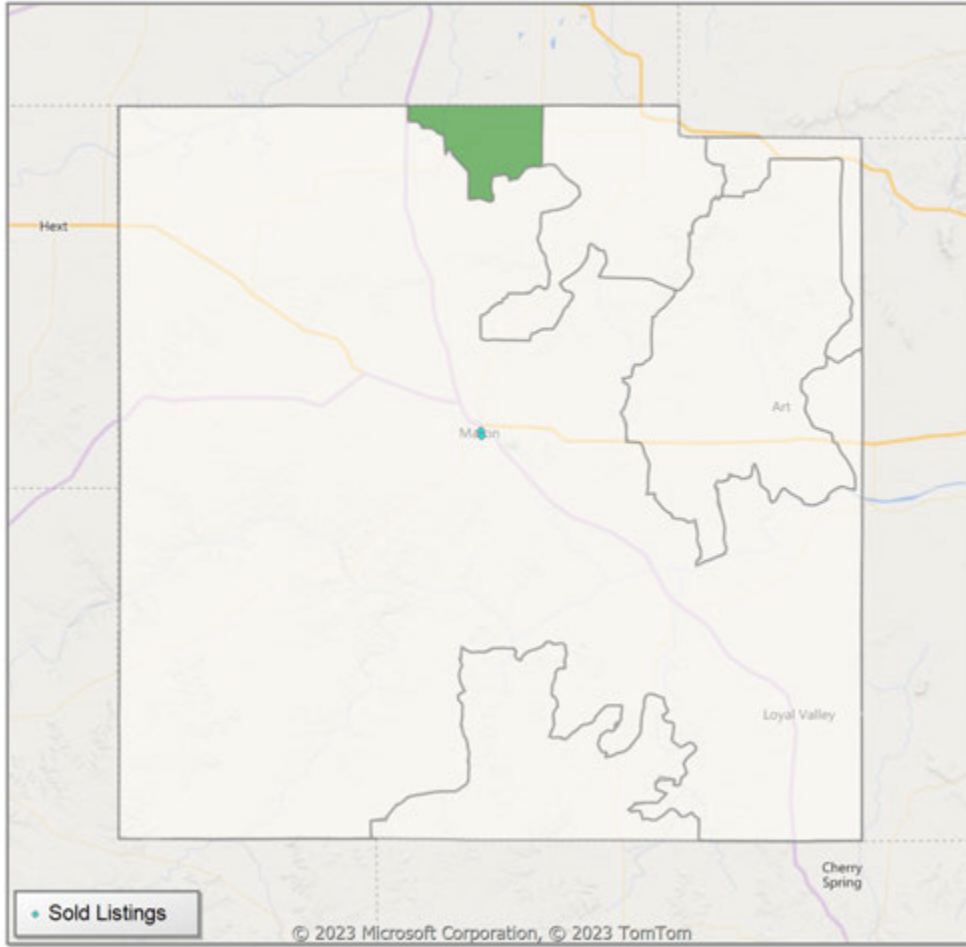


* US Census Zip Code Tabulation Area
** Residential includes Single Family, Condominium and Townhouse.

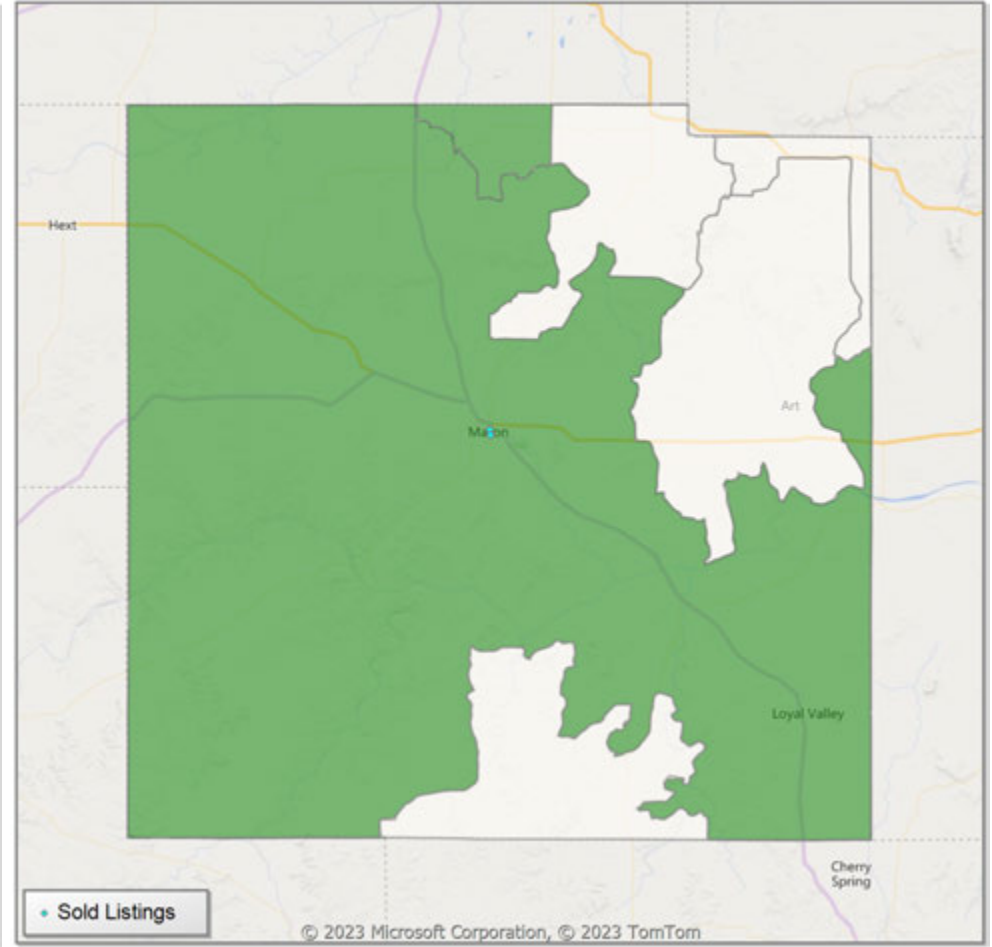


Comparison By Zip Code* in Mason County

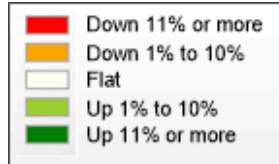
Residential Closed Sales
YoY Percentage Change**



Residential Avg Close Price Per SqFt
YoY Percentage Change**

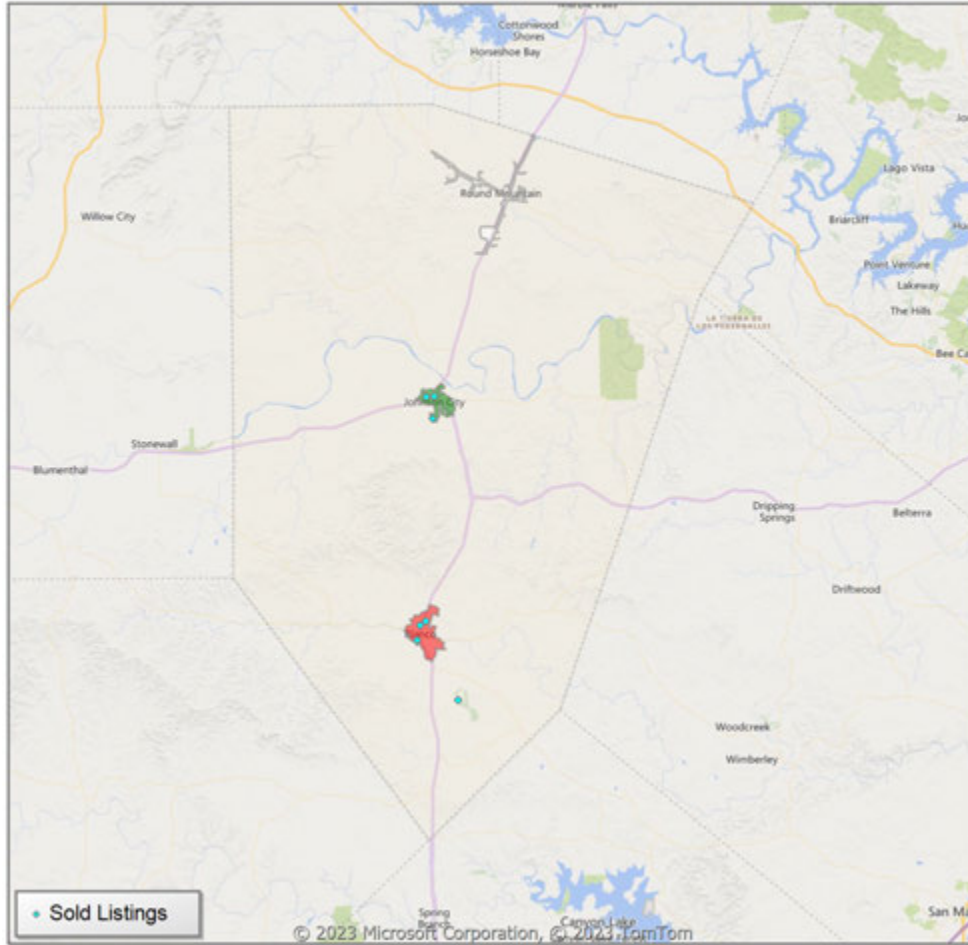


* US Census Zip Code Tabulation Area
** Residential includes Single Family, Condominium and Townhouse.

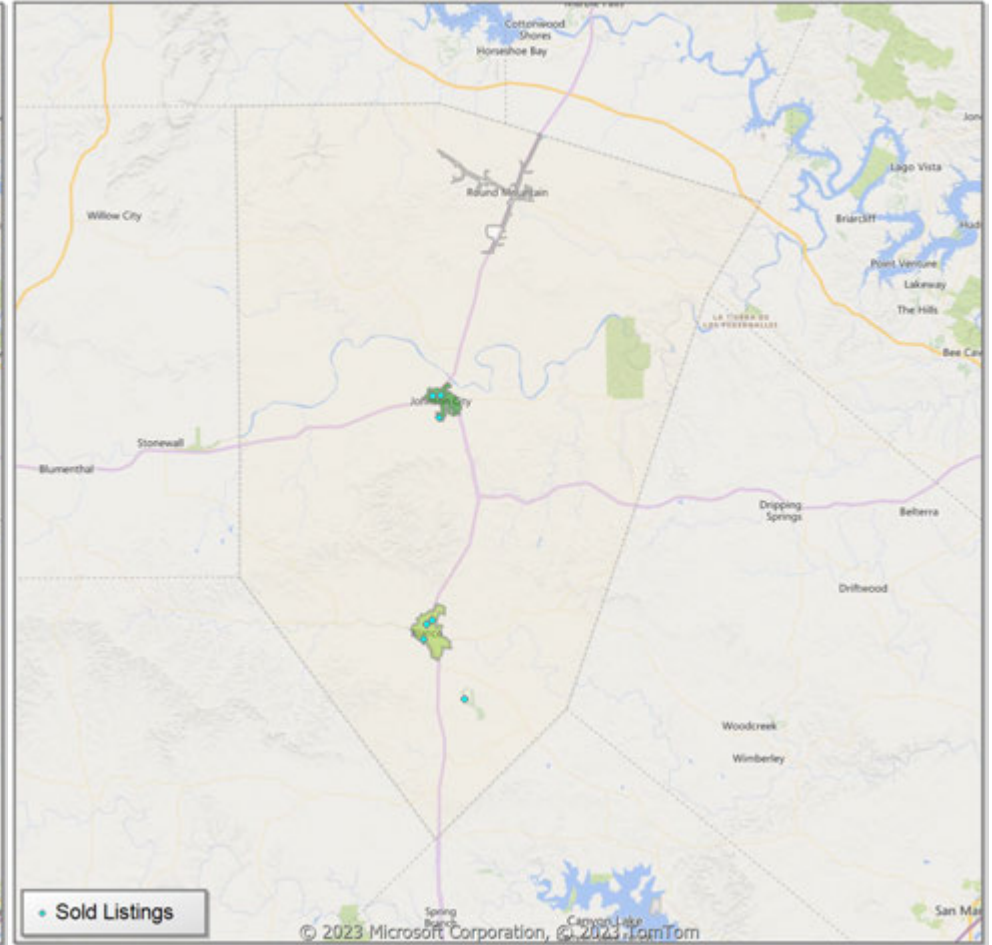


Comparison By Local Market Area* in Blanco County

Residential Closed Sales
YoY Percentage Change**



Residential Avg Close Price Per SqFt
YoY Percentage Change**

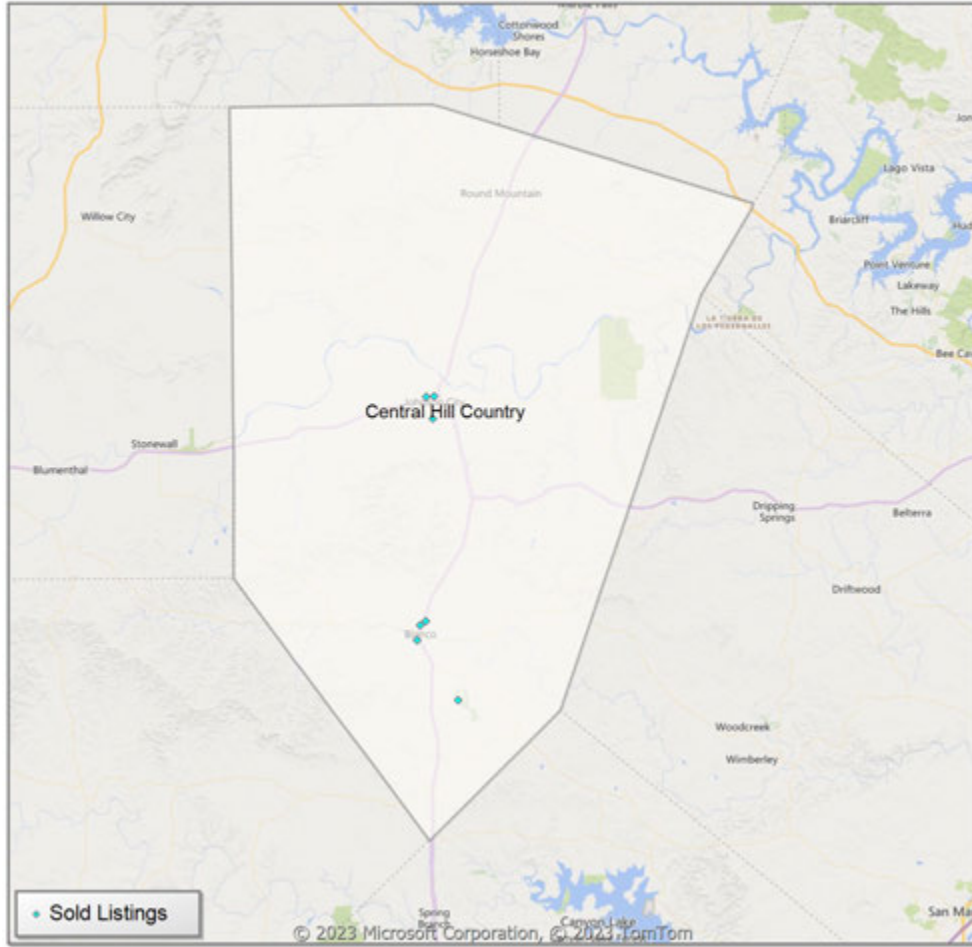


* Census Place Group

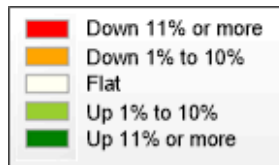
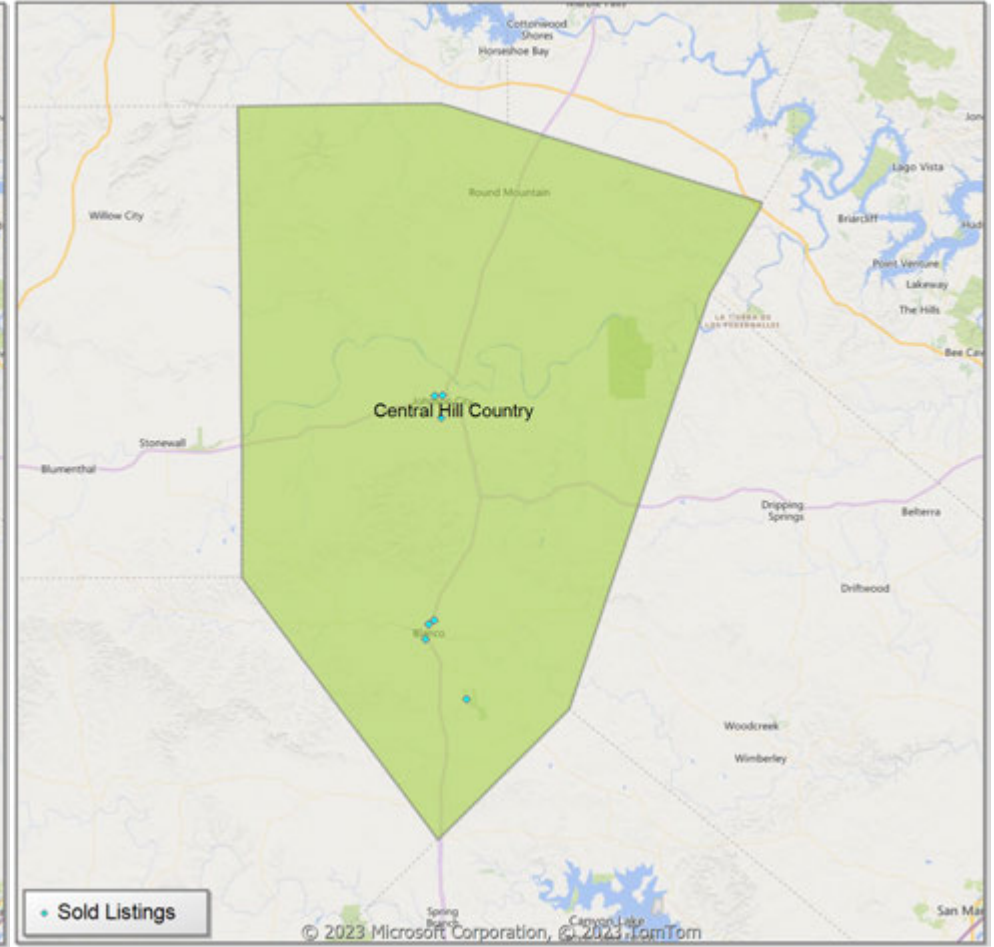
** Residential includes Single Family, Condominium and Townhouse.

Comparison By Local Market Area* in Blanco County

Residential Closed Sales
YoY Percentage Change**



Residential Avg Close Price Per SqFt
YoY Percentage Change**

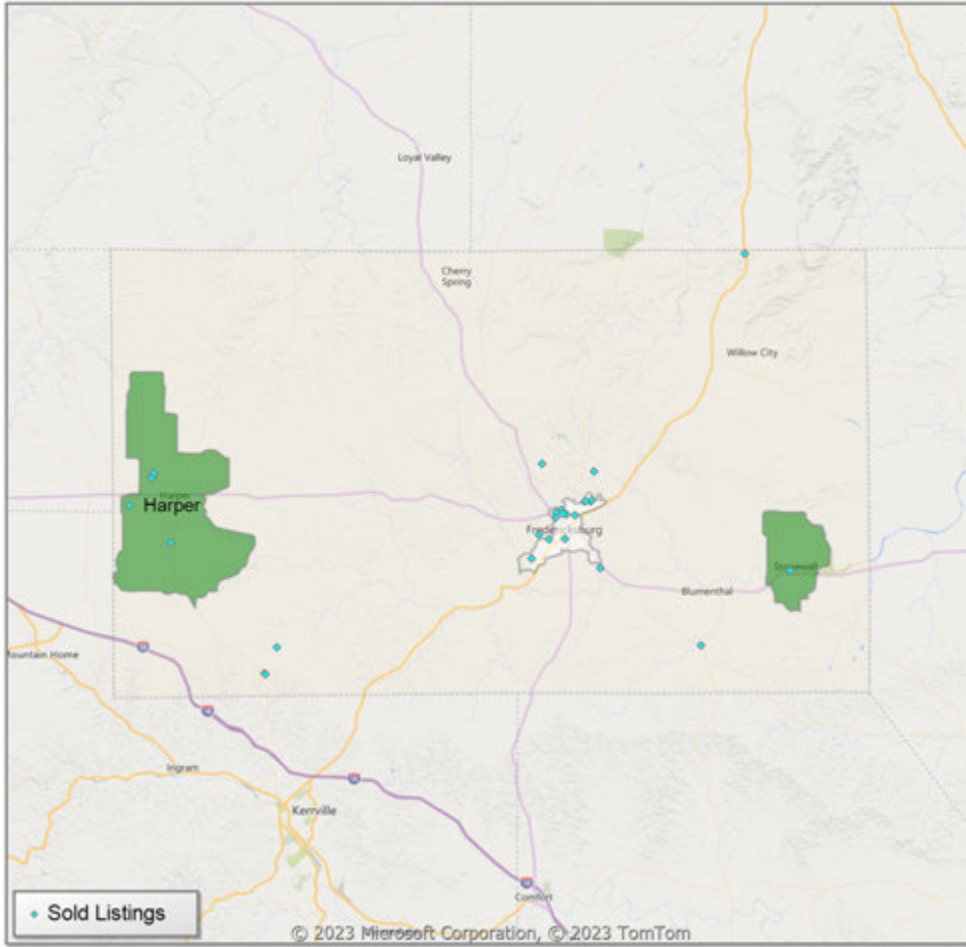


* Custom Defined Market

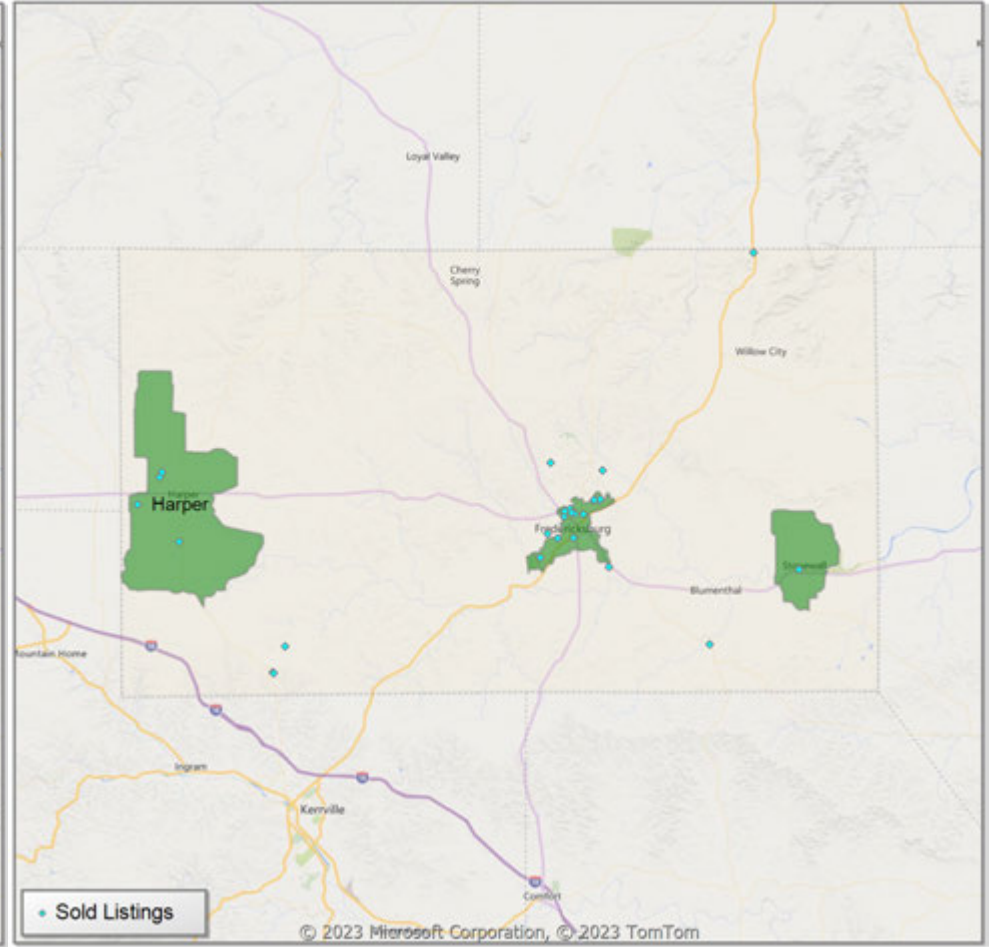
** Residential includes Single Family, Condominium and Townhouse.

Comparison By Local Market Area* in Gillespie County

Residential Closed Sales
YoY Percentage Change**



Residential Avg Close Price Per SqFt
YoY Percentage Change**

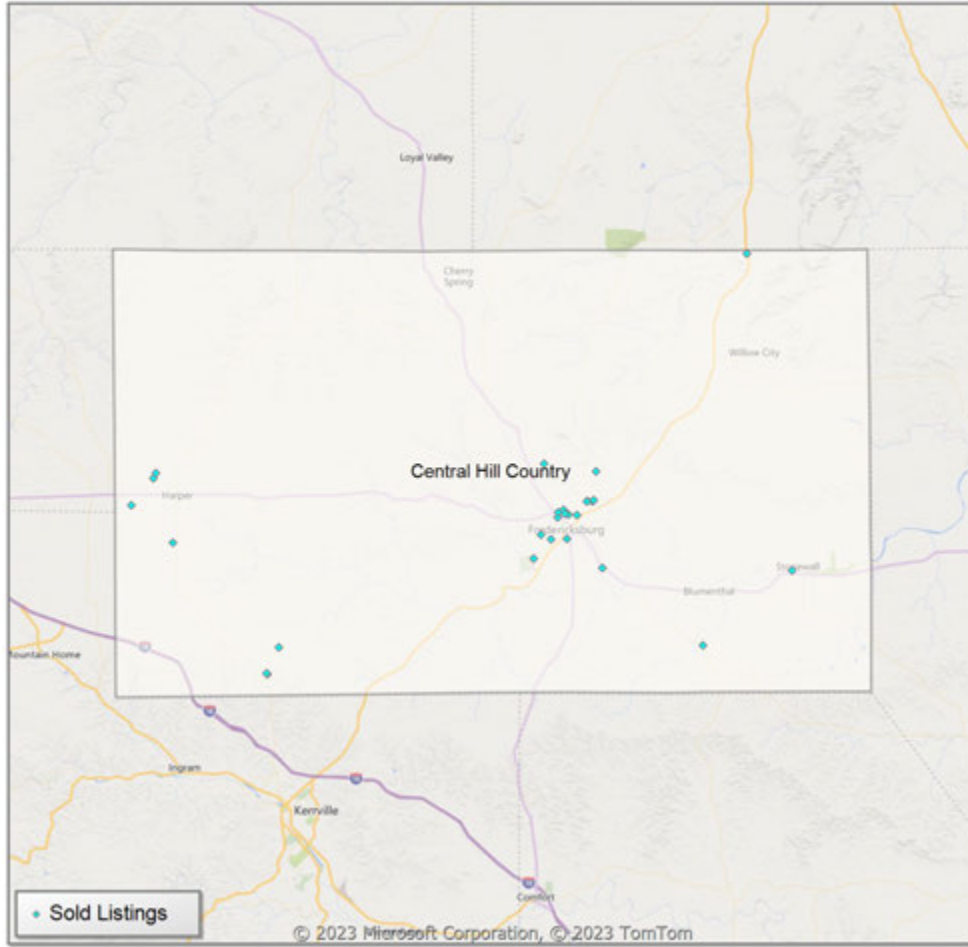


* Census Place Group

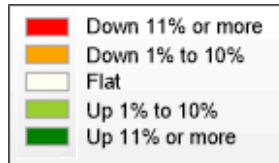
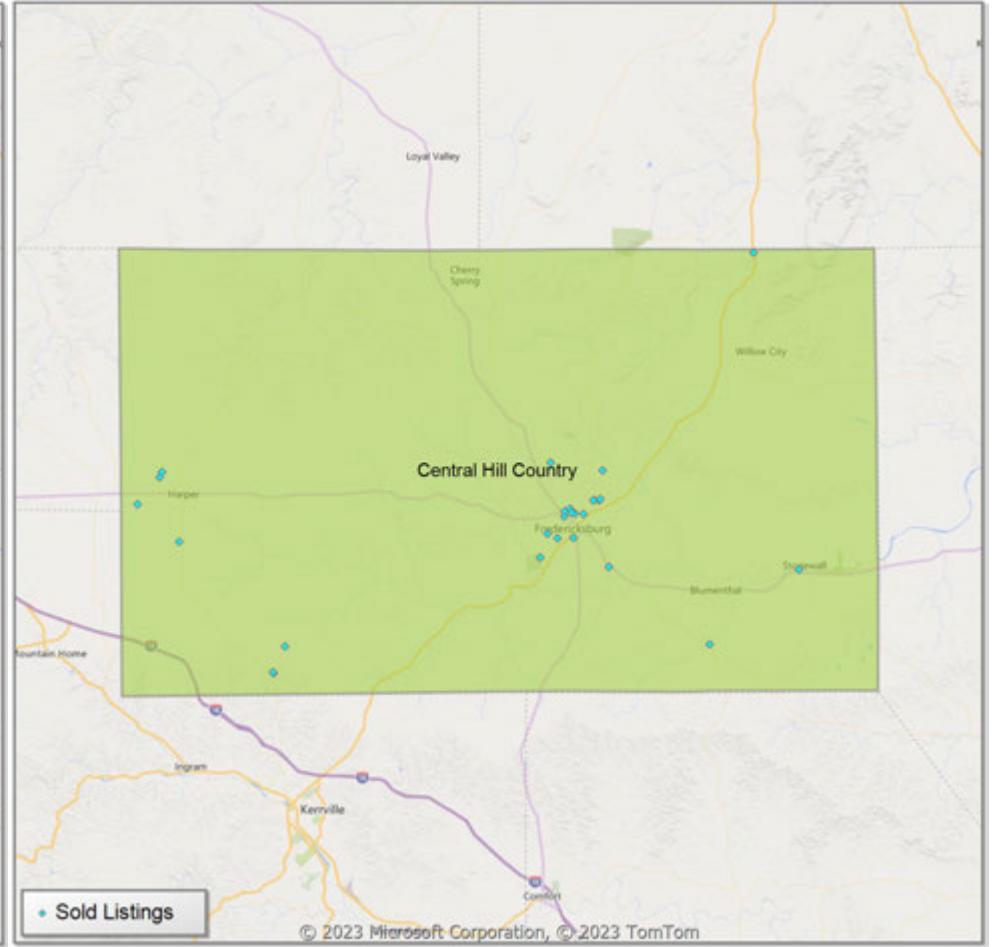
** Residential includes Single Family, Condominium and Townhouse.

Comparison By Local Market Area* in Gillespie County

Residential Closed Sales
YoY Percentage Change**



Residential Avg Close Price Per SqFt
YoY Percentage Change**

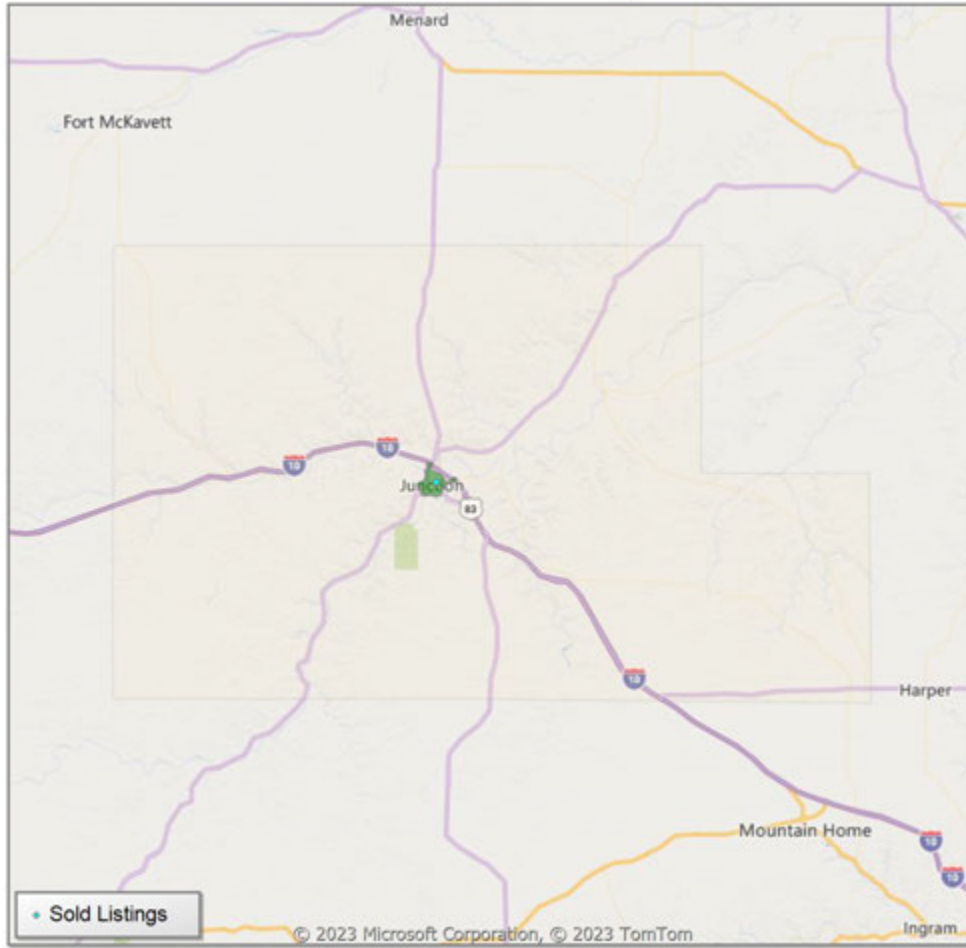


* Custom Defined Market

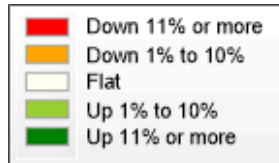
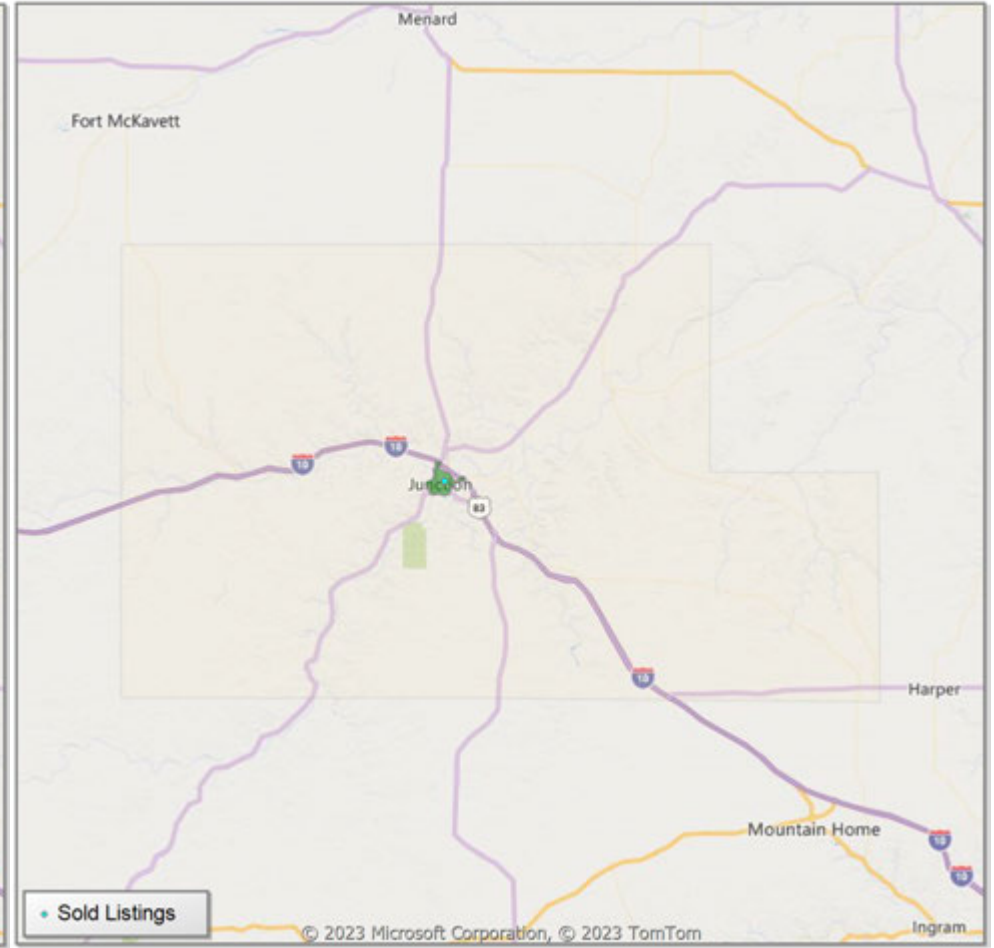
** Residential includes Single Family, Condominium and Townhouse.

Comparison By Local Market Area* in Kimble County

Residential Closed Sales
YoY Percentage Change**



Residential Avg Close Price Per SqFt
YoY Percentage Change**



* Census Place Group

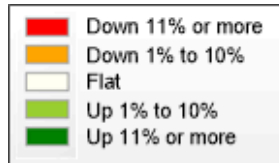
** Residential includes Single Family, Condominium and Townhouse.

Comparison By Local Market Area* in Kimble County

Residential Closed Sales
YoY Percentage Change**



Residential Avg Close Price Per SqFt
YoY Percentage Change**

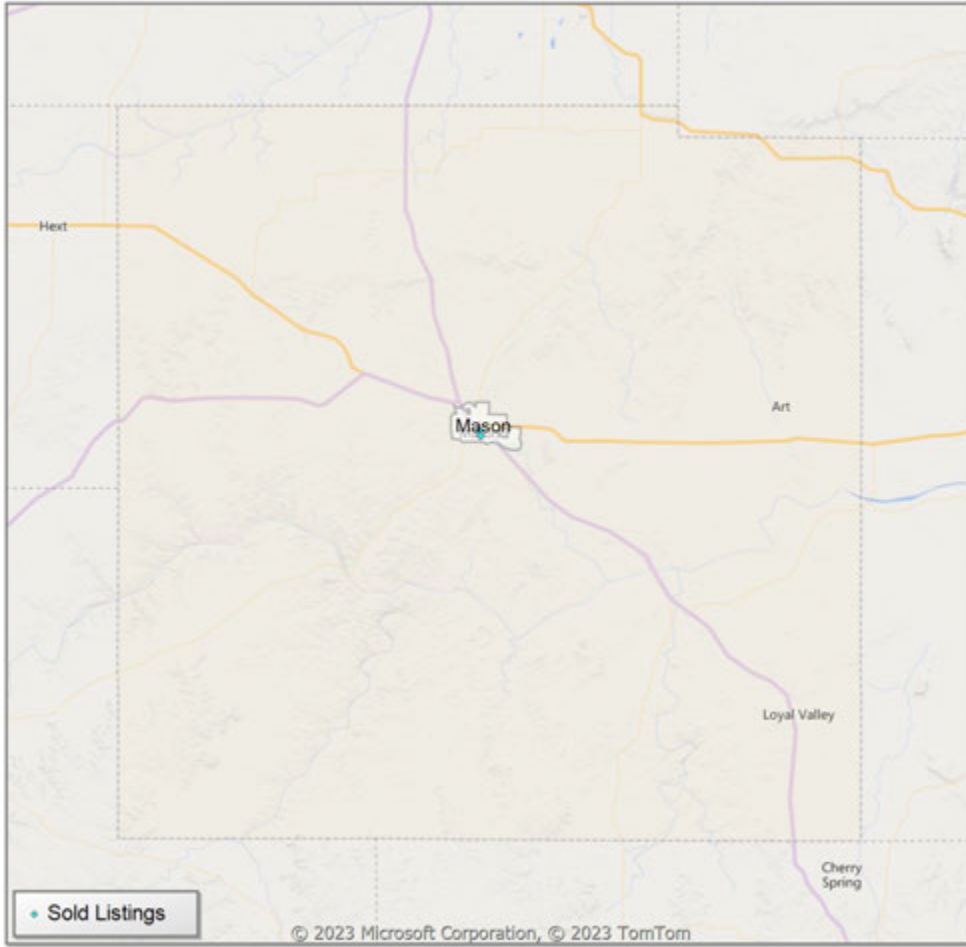


* Custom Defined Market

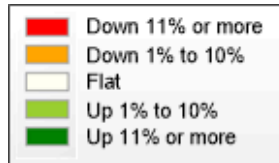
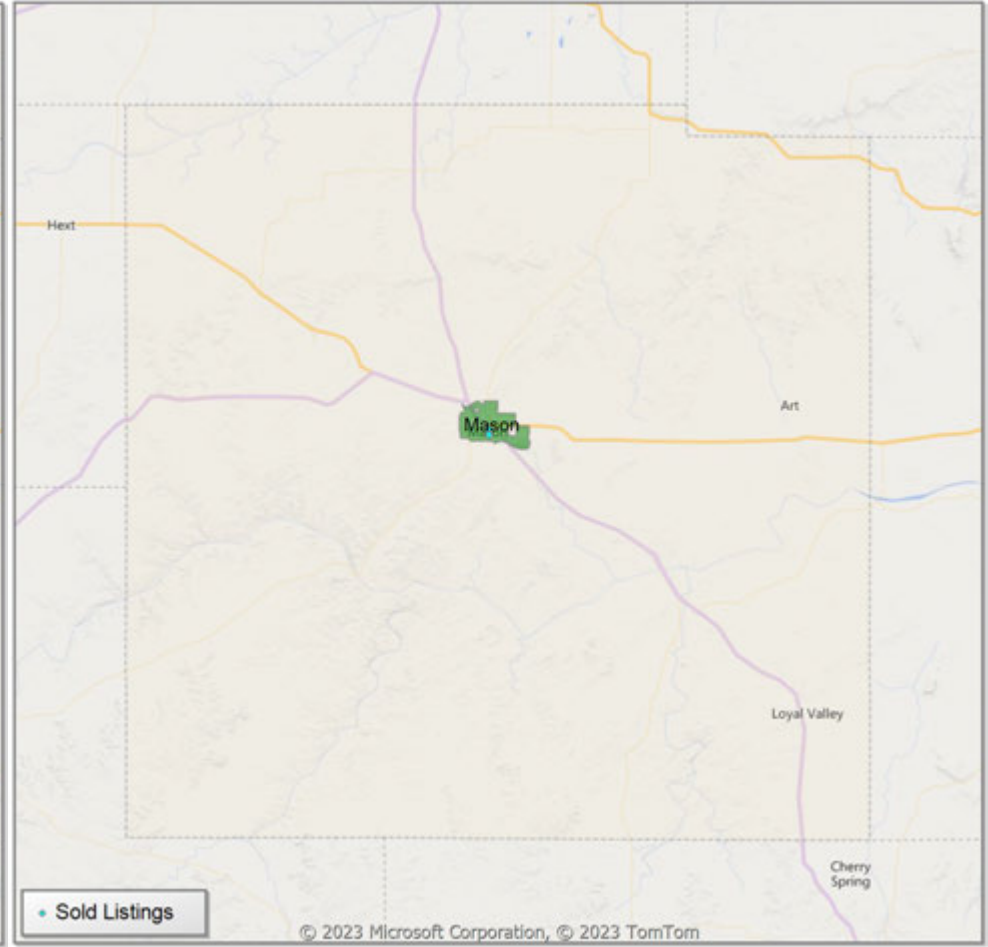
** Residential includes Single Family, Condominium and Townhouse.

Comparison By Local Market Area* in Mason County

Residential Closed Sales
YoY Percentage Change**



Residential Avg Close Price Per SqFt
YoY Percentage Change**



* Census Place Group

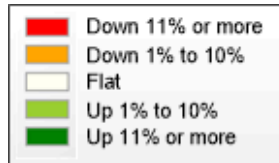
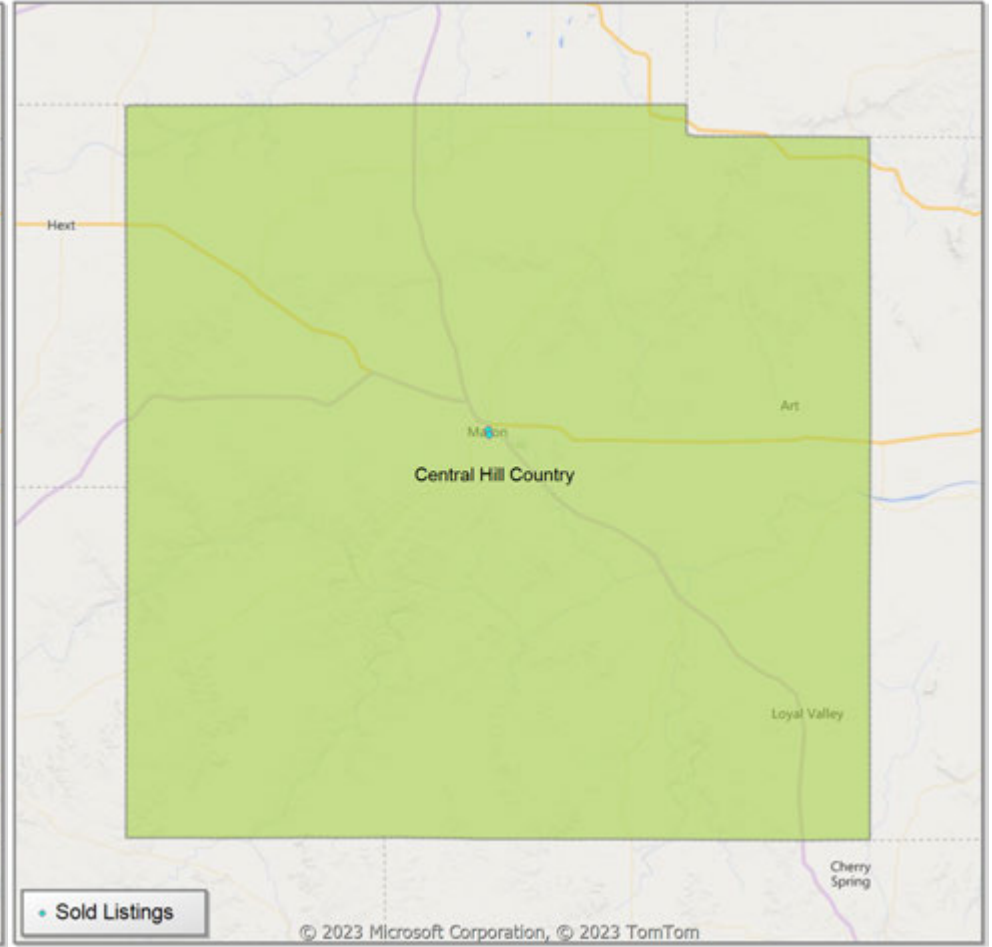
** Residential includes Single Family, Condominium and Townhouse.

Comparison By Local Market Area* in Mason County

Residential Closed Sales
YoY Percentage Change**



Residential Avg Close Price Per SqFt
YoY Percentage Change**



* Custom Defined Market

** Residential includes Single Family, Condominium and Townhouse.

Market Analysis By Local Market Area*: Blanco

Property Type	Closed Sales**	YoY%	Dollar Volume	YoY%	Average Price	YoY%	Median Price	YoY%	Price/Sqft	YoY%	DOM	New Listings	Active Listings	Pending Sales	Months Inventory	Close To OLP
All(New and Existing)																
Residential (SF/COND/TH)	3	-25.0%	\$803,000	-43.4%	\$267,667	-24.6%	\$275,000	-22.5%	\$181	7.4%	97	2	12	3	6.5	92.3%
YTD:	22	-29.0%	\$8,632,650	-32.8%	\$392,393	-5.3%	\$379,075	9.9%	\$228	-9.7%	94	45	13	23		92.2%
Single Family	3	-25.0%	\$803,000	-43.4%	\$267,667	-24.6%	\$275,000	-22.5%	\$181	7.4%	97	2	12	3	6.5	92.3%
YTD:	22	-26.7%	\$8,632,650	-24.6%	\$392,393	2.9%	\$379,075	11.6%	\$228	-9.7%	94	45	13	23		92.2%
Townhouse	-	0.0%	-	0.0%	-	0.0%	-	0.0%	-	0.0%	-	-	-	-	-	0.0%
YTD:	-	0.0%	-	0.0%	-	0.0%	-	0.0%	-	0.0%	-	-	-	-	-	0.0%
Condominium	-	0.0%	-	0.0%	-	0.0%	-	0.0%	-	0.0%	-	-	-	-	-	0.0%
YTD:	-	-100.0%	-	-100.0%	-	-100.0%	-	-100.0%	-	0.0%	-	-	-	-	-	0.0%
Existing Home																
Residential (SF/COND/TH)	3	-25.0%	\$803,000	-43.4%	\$267,667	-24.6%	\$275,000	-22.5%	\$181	7.4%	97	2	12	3	7.6	92.3%
YTD:	19	-36.7%	\$7,433,650	-40.0%	\$391,245	-5.3%	\$383,150	12.8%	\$222	-9.4%	88	39	12	20		91.8%
Single Family	3	-25.0%	\$803,000	-43.4%	\$267,667	-24.6%	\$275,000	-22.5%	\$181	7.4%	97	2	12	3	7.6	92.3%
YTD:	19	-34.5%	\$7,433,650	-32.4%	\$391,245	3.2%	\$383,150	14.5%	\$222	-9.4%	88	39	12	20		91.8%
Townhouse	-	0.0%	-	0.0%	-	0.0%	-	0.0%	-	0.0%	-	-	-	-	-	0.0%
YTD:	-	0.0%	-	0.0%	-	0.0%	-	0.0%	-	0.0%	-	-	-	-	-	0.0%
Condominium	-	0.0%	-	0.0%	-	0.0%	-	0.0%	-	0.0%	-	-	-	-	-	0.0%
YTD:	-	-100.0%	-	-100.0%	-	-100.0%	-	-100.0%	-	0.0%	-	-	-	-	-	0.0%
New Construction																
Residential (SF/COND/TH)	-	0.0%	-	0.0%	-	0.0%	-	0.0%	-	0.0%	-	-	-	-	-	0.0%
YTD:	3	200.0%	\$1,199,000	166.4%	\$399,667	-11.2%	\$375,000	-16.7%	\$262	-42.2%	132	6	2	3		95.2%
Single Family	-	0.0%	-	0.0%	-	0.0%	-	0.0%	-	0.0%	-	-	-	-	-	0.0%
YTD:	3	200.0%	\$1,199,000	166.4%	\$399,667	-11.2%	\$375,000	-16.7%	\$262	-42.2%	132	6	2	3		95.2%
Townhouse	-	0.0%	-	0.0%	-	0.0%	-	0.0%	-	0.0%	-	-	-	-	-	0.0%
YTD:	-	0.0%	-	0.0%	-	0.0%	-	0.0%	-	0.0%	-	-	-	-	-	0.0%
Condominium	-	0.0%	-	0.0%	-	0.0%	-	0.0%	-	0.0%	-	-	-	-	-	0.0%
YTD:	-	0.0%	-	0.0%	-	0.0%	-	0.0%	-	0.0%	-	-	-	-	-	0.0%

* Local Market Area Code: 91; Type: Census Place Group
 ** Closed Sale counts for most recent 3 months are Preliminary.

Market Analysis By Local Market Area*: Central Hill Country

Property Type	Closed Sales**	YoY%	Dollar Volume	YoY%	Average Price	YoY%	Median Price	YoY%	Price/Sqft	YoY%	DOM	New Listings	Active Listings	Pending Sales	Months Inventory	Close To OLP
All(New and Existing)																
Residential (SF/COND/TH)	39	0.0%	\$18,320,261	-10.4%	\$469,750	-10.4%	\$441,500	1.7%	\$310	7.2%	133	46	441	35	9.1	89.7%
YTD:	579	-18.6%	\$373,008,309	-19.5%	\$644,229	-1.1%	\$499,000	-2.5%	\$323	-1.8%	110	1,221	453	378		91.3%
Single Family	38	-2.6%	\$18,059,247	-11.7%	\$475,243	-9.3%	\$442,500	2.0%	\$310	7.2%	135	46	426	34	8.9	89.5%
YTD:	574	-19.2%	\$370,540,245	-19.8%	\$645,540	-0.8%	\$499,000	-2.5%	\$324	-1.5%	109	1,179	446	373		91.3%
Townhouse	-	0.0%	-	0.0%	-	0.0%	-	0.0%	-	0.0%	-	-	-	-	-	0.0%
YTD:	4	100.0%	\$2,200,000	100.0%	\$550,000	100.0%	\$550,000	100.0%	\$194	100.0%	241	1	3	4		80.4%
Condominium	1	100.0%	\$272,000	100.0%	\$272,000	100.0%	\$272,000	100.0%	-	0.0%	57	-	15	1	180.0	98.9%
YTD:	1	0.0%	\$272,000	-80.6%	\$272,000	-80.6%	\$272,000	-80.6%	-	0.0%	57	41	8	1		98.9%
Existing Home																
Residential (SF/COND/TH)	34	47.8%	\$15,952,120	14.9%	\$469,180	-22.3%	\$424,500	-32.6%	\$320	7.9%	123	36	335	32	8.9	90.2%
YTD:	450	-15.4%	\$296,163,808	-21.7%	\$658,142	-7.4%	\$500,000	-12.6%	\$335	-4.3%	109	937	334	284		89.8%
Single Family	33	43.5%	\$15,692,841	13.1%	\$475,541	-21.2%	\$439,000	-30.3%	\$320	7.9%	125	36	321	31	8.7	89.9%
YTD:	445	-16.2%	\$293,695,504	-22.1%	\$659,990	-7.0%	\$500,000	-12.1%	\$336	-3.9%	108	896	327	279		89.9%
Townhouse	-	0.0%	-	0.0%	-	0.0%	-	0.0%	-	0.0%	-	-	-	-	-	0.0%
YTD:	4	100.0%	\$2,200,000	100.0%	\$550,000	100.0%	\$550,000	100.0%	\$194	100.0%	241	1	3	4		80.4%
Condominium	1	100.0%	\$272,000	100.0%	\$272,000	100.0%	\$272,000	100.0%	-	0.0%	57	-	14	1	168.0	98.9%
YTD:	1	0.0%	\$272,000	-80.6%	\$272,000	-80.6%	\$272,000	-80.6%	-	0.0%	57	40	8	1		98.9%
New Construction																
Residential (SF/COND/TH)	5	-68.8%	\$2,367,000	-63.9%	\$473,400	15.4%	\$449,000	7.1%	\$248	-11.2%	198	10	106	3	9.9	86.7%
YTD:	128	-28.5%	\$76,228,099	-10.4%	\$595,532	25.4%	\$485,000	8.0%	\$280	5.7%	111	284	119	94		96.2%
Single Family	5	-68.8%	\$2,367,000	-63.9%	\$473,400	15.4%	\$449,000	7.1%	\$248	-11.2%	198	10	105	3	9.8	86.7%
YTD:	128	-28.5%	\$76,228,099	-10.4%	\$595,532	25.4%	\$485,000	8.0%	\$280	5.7%	111	283	119	94		96.2%
Townhouse	-	0.0%	-	0.0%	-	0.0%	-	0.0%	-	0.0%	-	-	-	-	-	0.0%
YTD:	-	0.0%	-	0.0%	-	0.0%	-	0.0%	-	0.0%	-	-	-	-	-	0.0%
Condominium	-	0.0%	-	0.0%	-	0.0%	-	0.0%	-	0.0%	-	-	1	-	-	0.0%
YTD:	-	0.0%	-	0.0%	-	0.0%	-	0.0%	-	0.0%	-	1	1	-	-	0.0%

* Local Market Area Code: CHC; Type: Custom Defined Market

** Closed Sale counts for most recent 3 months are Preliminary.

Market Analysis By Local Market Area*: Fredericksburg

Property Type	Closed Sales**	YoY%	Dollar Volume	YoY%	Average Price	YoY%	Median Price	YoY%	Price/Sqft	YoY%	DOM	New Listings	Active Listings	Pending Sales	Months Inventory	Close To OLP
All(New and Existing)																
Residential (SF/COND/TH)	13	0.0%	\$7,004,400	-1.2%	\$538,800	-1.2%	\$443,500	19.9%	\$440	12.3%	153	14	135	15	8.4	90.0%
YTD:	194	-22.4%	\$122,362,675	-26.6%	\$630,735	-5.5%	\$518,750	-7.7%	\$361	-4.2%	114	413	139	94		91.1%
Single Family	13	0.0%	\$7,004,400	-1.2%	\$538,800	-1.2%	\$443,500	19.9%	\$440	12.3%	153	14	134	15	8.5	90.0%
YTD:	190	-24.0%	\$120,162,675	-28.0%	\$632,435	-5.2%	\$515,000	-8.3%	\$364	-3.2%	111	387	137	90		91.4%
Townhouse	-	0.0%	-	0.0%	-	0.0%	-	0.0%	-	0.0%	-	-	-	-	-	0.0%
YTD:	4	100.0%	\$2,200,000	100.0%	\$550,000	100.0%	\$550,000	100.0%	\$194	100.0%	241	1	3	4		80.4%
Condominium	-	0.0%	-	0.0%	-	0.0%	-	0.0%	-	0.0%	-	-	1	-	-	0.0%
YTD:	-	0.0%	-	0.0%	-	0.0%	-	0.0%	-	0.0%	-	25	1	-	-	0.0%
Existing Home																
Residential (SF/COND/TH)	12	71.4%	\$6,474,400	32.7%	\$539,533	-22.6%	\$441,250	-41.2%	\$455	5.4%	151	14	118	15	8.1	90.0%
YTD:	175	-8.4%	\$112,379,633	-19.0%	\$642,169	-11.6%	\$515,000	-20.8%	\$369	-9.7%	114	373	126	85		90.4%
Single Family	12	71.4%	\$6,474,400	32.7%	\$539,533	-22.6%	\$441,250	-41.2%	\$455	5.4%	151	14	118	15	8.3	90.0%
YTD:	171	-10.5%	\$110,179,633	-20.6%	\$644,325	-11.3%	\$505,000	-22.3%	\$373	-8.7%	111	348	124	81		90.7%
Townhouse	-	0.0%	-	0.0%	-	0.0%	-	0.0%	-	0.0%	-	-	-	-	-	0.0%
YTD:	4	100.0%	\$2,200,000	100.0%	\$550,000	100.0%	\$550,000	100.0%	\$194	100.0%	241	1	3	4		80.4%
Condominium	-	0.0%	-	0.0%	-	0.0%	-	0.0%	-	0.0%	-	-	-	-	-	0.0%
YTD:	-	0.0%	-	0.0%	-	0.0%	-	0.0%	-	0.0%	-	24	-	-	-	0.0%
New Construction																
Residential (SF/COND/TH)	1	-83.3%	\$530,000	-76.0%	\$530,000	44.2%	\$530,000	65.6%	\$258	-25.0%	182	-	17	-	10.7	89.8%
YTD:	19	-67.8%	\$9,983,042	-64.4%	\$525,423	10.5%	\$529,000	11.4%	\$286	4.7%	116	40	13	9		97.4%
Single Family	1	-83.3%	\$530,000	-76.0%	\$530,000	44.2%	\$530,000	65.6%	\$258	-25.0%	182	-	16	-	10.1	89.8%
YTD:	19	-67.8%	\$9,983,042	-64.4%	\$525,423	10.5%	\$529,000	11.4%	\$286	4.7%	116	39	13	9		97.4%
Townhouse	-	0.0%	-	0.0%	-	0.0%	-	0.0%	-	0.0%	-	-	-	-	-	0.0%
YTD:	-	0.0%	-	0.0%	-	0.0%	-	0.0%	-	0.0%	-	-	-	-	-	0.0%
Condominium	-	0.0%	-	0.0%	-	0.0%	-	0.0%	-	0.0%	-	-	1	-	-	0.0%
YTD:	-	0.0%	-	0.0%	-	0.0%	-	0.0%	-	0.0%	-	1	1	-	-	0.0%

* Local Market Area Code: 335; Type: Census Place Group
 ** Closed Sale counts for most recent 3 months are Preliminary.

Market Analysis By Local Market Area*: Harper

Property Type	Closed Sales**	YoY%	Dollar Volume	YoY%	Average Price	YoY%	Median Price	YoY%	Price/Sqft	YoY%	DOM	New Listings	Active Listings	Pending Sales	Months Inventory	Close To OLP
All(New and Existing)																
Residential (SF/COND/TH)	4	100.0%	\$1,507,000	100.0%	\$376,750	100.0%	\$400,250	100.0%	\$217	100.0%	94	2	24	-	9.9	85.3%
YTD:	29	61.1%	\$12,529,100	110.6%	\$432,038	30.7%	\$410,000	56.2%	\$272	25.2%	86	54	23	21		93.0%
Single Family	4	100.0%	\$1,507,000	100.0%	\$376,750	100.0%	\$400,250	100.0%	\$217	100.0%	94	2	24	-	9.9	85.3%
YTD:	29	61.1%	\$12,529,100	110.6%	\$432,038	30.7%	\$410,000	56.2%	\$272	25.2%	86	54	23	21		93.0%
Townhouse	-	0.0%	-	0.0%	-	0.0%	-	0.0%	-	0.0%	-	-	-	-	-	0.0%
YTD:	-	0.0%	-	0.0%	-	0.0%	-	0.0%	-	0.0%	-	-	-	-	-	0.0%
Condominium	-	0.0%	-	0.0%	-	0.0%	-	0.0%	-	0.0%	-	-	-	-	-	0.0%
YTD:	-	0.0%	-	0.0%	-	0.0%	-	0.0%	-	0.0%	-	-	-	-	-	0.0%
Existing Home																
Residential (SF/COND/TH)	2	100.0%	\$624,000	100.0%	\$312,000	100.0%	\$312,000	100.0%	\$180	100.0%	73	1	20	-	12.6	0.0%
YTD:	19	11.8%	\$7,843,600	50.6%	\$412,821	34.8%	\$374,900	44.2%	\$268	27.5%	72	41	19	14		91.5%
Single Family	2	100.0%	\$624,000	100.0%	\$312,000	100.0%	\$312,000	100.0%	\$180	100.0%	73	1	20	-	12.6	0.0%
YTD:	19	11.8%	\$7,843,600	50.6%	\$412,821	34.8%	\$374,900	44.2%	\$268	27.5%	72	41	19	14		91.5%
Townhouse	-	0.0%	-	0.0%	-	0.0%	-	0.0%	-	0.0%	-	-	-	-	-	0.0%
YTD:	-	0.0%	-	0.0%	-	0.0%	-	0.0%	-	0.0%	-	-	-	-	-	0.0%
Condominium	-	0.0%	-	0.0%	-	0.0%	-	0.0%	-	0.0%	-	-	-	-	-	0.0%
YTD:	-	0.0%	-	0.0%	-	0.0%	-	0.0%	-	0.0%	-	-	-	-	-	0.0%
New Construction																
Residential (SF/COND/TH)	2	100.0%	\$883,000	100.0%	\$441,500	100.0%	\$441,500	100.0%	\$255	100.0%	116	1	4	-	4.8	85.3%
YTD:	10	900.0%	\$4,685,500	531.5%	\$468,550	-36.9%	\$525,000	-29.3%	\$281	-18.7%	113	13	4	7		95.8%
Single Family	2	100.0%	\$883,000	100.0%	\$441,500	100.0%	\$441,500	100.0%	\$255	100.0%	116	1	4	-	4.8	85.3%
YTD:	10	900.0%	\$4,685,500	531.5%	\$468,550	-36.9%	\$525,000	-29.3%	\$281	-18.7%	113	13	4	7		95.8%
Townhouse	-	0.0%	-	0.0%	-	0.0%	-	0.0%	-	0.0%	-	-	-	-	-	0.0%
YTD:	-	0.0%	-	0.0%	-	0.0%	-	0.0%	-	0.0%	-	-	-	-	-	0.0%
Condominium	-	0.0%	-	0.0%	-	0.0%	-	0.0%	-	0.0%	-	-	-	-	-	0.0%
YTD:	-	0.0%	-	0.0%	-	0.0%	-	0.0%	-	0.0%	-	-	-	-	-	0.0%

* Local Market Area Code: 404; Type: Census Place Group
 ** Closed Sale counts for most recent 3 months are Preliminary.

Market Analysis By Local Market Area*: Johnson City

Property Type	Closed Sales**	YoY%	Dollar Volume	YoY%	Average Price	YoY%	Median Price	YoY%	Price/Sqft	YoY%	DOM	New Listings	Active Listings	Pending Sales	Months Inventory	Close To OLP
All(New and Existing)																
Residential (SF/COND/TH)	3	100.0%	\$1,180,000	100.0%	\$393,333	100.0%	\$445,000	100.0%	\$234	100.0%	77	3	9	2	5.4	92.7%
YTD:	20	-13.0%	\$7,815,911	-21.6%	\$390,796	-9.8%	\$382,250	-14.1%	\$260	13.1%	80	35	9	19		90.4%
Single Family	3	100.0%	\$1,180,000	100.0%	\$393,333	100.0%	\$445,000	100.0%	\$234	100.0%	77	3	9	2	5.4	92.7%
YTD:	20	-13.0%	\$7,815,911	-21.6%	\$390,796	-9.8%	\$382,250	-14.1%	\$260	13.1%	80	35	9	19		90.4%
Townhouse	-	0.0%	-	0.0%	-	0.0%	-	0.0%	-	0.0%	-	-	-	-	-	0.0%
YTD:	-	0.0%	-	0.0%	-	0.0%	-	0.0%	-	0.0%	-	-	-	-	-	0.0%
Condominium	-	0.0%	-	0.0%	-	0.0%	-	0.0%	-	0.0%	-	-	-	-	-	0.0%
YTD:	-	0.0%	-	0.0%	-	0.0%	-	0.0%	-	0.0%	-	-	-	-	-	0.0%
Existing Home																
Residential (SF/COND/TH)	3	100.0%	\$1,180,000	100.0%	\$393,333	100.0%	\$445,000	100.0%	\$234	100.0%	77	3	9	2	5.7	92.7%
YTD:	19	-5.0%	\$7,375,911	-15.0%	\$388,206	-10.5%	\$376,000	-16.4%	\$259	14.9%	81	32	9	18		91.3%
Single Family	3	100.0%	\$1,180,000	100.0%	\$393,333	100.0%	\$445,000	100.0%	\$234	100.0%	77	3	9	2	5.7	92.7%
YTD:	19	-5.0%	\$7,375,911	-15.0%	\$388,206	-10.5%	\$376,000	-16.4%	\$259	14.9%	81	32	9	18		91.3%
Townhouse	-	0.0%	-	0.0%	-	0.0%	-	0.0%	-	0.0%	-	-	-	-	-	0.0%
YTD:	-	0.0%	-	0.0%	-	0.0%	-	0.0%	-	0.0%	-	-	-	-	-	0.0%
Condominium	-	0.0%	-	0.0%	-	0.0%	-	0.0%	-	0.0%	-	-	-	-	-	0.0%
YTD:	-	0.0%	-	0.0%	-	0.0%	-	0.0%	-	0.0%	-	-	-	-	-	0.0%
New Construction																
Residential (SF/COND/TH)	-	0.0%	-	0.0%	-	0.0%	-	0.0%	-	0.0%	-	-	-	-	-	0.0%
YTD:	1	-66.7%	\$440,000	-65.8%	\$440,000	2.5%	\$440,000	35.4%	\$279	7.6%	62	3	1	1		73.7%
Single Family	-	0.0%	-	0.0%	-	0.0%	-	0.0%	-	0.0%	-	-	-	-	-	0.0%
YTD:	1	-66.7%	\$440,000	-65.8%	\$440,000	2.5%	\$440,000	35.4%	\$279	7.6%	62	3	1	1		73.7%
Townhouse	-	0.0%	-	0.0%	-	0.0%	-	0.0%	-	0.0%	-	-	-	-	-	0.0%
YTD:	-	0.0%	-	0.0%	-	0.0%	-	0.0%	-	0.0%	-	-	-	-	-	0.0%
Condominium	-	0.0%	-	0.0%	-	0.0%	-	0.0%	-	0.0%	-	-	-	-	-	0.0%
YTD:	-	0.0%	-	0.0%	-	0.0%	-	0.0%	-	0.0%	-	-	-	-	-	0.0%

* Local Market Area Code: 484; Type: Census Place Group
 ** Closed Sale counts for most recent 3 months are Preliminary.

Market Analysis By Local Market Area*: Junction

Property Type	Closed Sales**	YoY%	Dollar Volume	YoY%	Average Price	YoY%	Median Price	YoY%	Price/Sqft	YoY%	DOM	New Listings	Active Listings	Pending Sales	Months Inventory	Close To OLP
All(New and Existing)																
Residential (SF/COND/TH)	1	100.0%	\$218,860	100.0%	\$218,860	100.0%	\$218,860	100.0%	\$164	100.0%	392	-	1	2	2.0	76.8%
YTD:	6	20.0%	\$970,307	-10.6%	\$161,718	-25.5%	\$183,163	25.5%	\$150	20.7%	104	10	3	7		75.1%
Single Family	1	100.0%	\$218,860	100.0%	\$218,860	100.0%	\$218,860	100.0%	\$164	100.0%	392	-	1	2	2.0	76.8%
YTD:	6	20.0%	\$970,307	-10.6%	\$161,718	-25.5%	\$183,163	25.5%	\$150	20.7%	104	10	3	7		75.1%
Townhouse	-	0.0%	-	0.0%	-	0.0%	-	0.0%	-	0.0%	-	-	-	-	-	0.0%
YTD:	-	0.0%	-	0.0%	-	0.0%	-	0.0%	-	0.0%	-	-	-	-	-	0.0%
Condominium	-	0.0%	-	0.0%	-	0.0%	-	0.0%	-	0.0%	-	-	-	-	-	0.0%
YTD:	-	0.0%	-	0.0%	-	0.0%	-	0.0%	-	0.0%	-	-	-	-	-	0.0%
Existing Home																
Residential (SF/COND/TH)	1	100.0%	\$218,860	100.0%	\$218,860	100.0%	\$218,860	100.0%	\$164	100.0%	392	-	1	2	2.0	76.8%
YTD:	6	20.0%	\$970,307	-10.6%	\$161,718	-25.5%	\$183,163	25.5%	\$150	20.7%	104	10	3	7		75.1%
Single Family	1	100.0%	\$218,860	100.0%	\$218,860	100.0%	\$218,860	100.0%	\$164	100.0%	392	-	1	2	2.0	76.8%
YTD:	6	20.0%	\$970,307	-10.6%	\$161,718	-25.5%	\$183,163	25.5%	\$150	20.7%	104	10	3	7		75.1%
Townhouse	-	0.0%	-	0.0%	-	0.0%	-	0.0%	-	0.0%	-	-	-	-	-	0.0%
YTD:	-	0.0%	-	0.0%	-	0.0%	-	0.0%	-	0.0%	-	-	-	-	-	0.0%
Condominium	-	0.0%	-	0.0%	-	0.0%	-	0.0%	-	0.0%	-	-	-	-	-	0.0%
YTD:	-	0.0%	-	0.0%	-	0.0%	-	0.0%	-	0.0%	-	-	-	-	-	0.0%
New Construction																
Residential (SF/COND/TH)	-	0.0%	-	0.0%	-	0.0%	-	0.0%	-	0.0%	-	-	-	-	-	0.0%
YTD:	-	0.0%	-	0.0%	-	0.0%	-	0.0%	-	0.0%	-	-	-	-	-	0.0%
Single Family	-	0.0%	-	0.0%	-	0.0%	-	0.0%	-	0.0%	-	-	-	-	-	0.0%
YTD:	-	0.0%	-	0.0%	-	0.0%	-	0.0%	-	0.0%	-	-	-	-	-	0.0%
Townhouse	-	0.0%	-	0.0%	-	0.0%	-	0.0%	-	0.0%	-	-	-	-	-	0.0%
YTD:	-	0.0%	-	0.0%	-	0.0%	-	0.0%	-	0.0%	-	-	-	-	-	0.0%
Condominium	-	0.0%	-	0.0%	-	0.0%	-	0.0%	-	0.0%	-	-	-	-	-	0.0%
YTD:	-	0.0%	-	0.0%	-	0.0%	-	0.0%	-	0.0%	-	-	-	-	-	0.0%

* Local Market Area Code: 490; Type: Census Place Group
 ** Closed Sale counts for most recent 3 months are Preliminary.

Market Analysis By Local Market Area*: Mason

Property Type	Closed Sales**	YoY%	Dollar Volume	YoY%	Average Price	YoY%	Median Price	YoY%	Price/Sqft	YoY%	DOM	New Listings	Active Listings	Pending Sales	Months Inventory	Close To OLP	
All(New and Existing)																	
Residential (SF/COND/TH)	2	0.0%	\$445,000	53.2%	\$222,500	53.2%	\$222,500	53.2%	\$188	90.2%	132	2	17	1	7.6	81.2%	
YTD:	27	-18.2%	\$7,743,750	-17.5%	\$286,806	0.8%	\$245,000	-5.8%	\$184	-10.7%	112	55	21	18		84.5%	
Single Family	2	0.0%	\$445,000	53.2%	\$222,500	53.2%	\$222,500	53.2%	\$188	90.2%	132	2	17	1	7.6	81.2%	
YTD:	27	-18.2%	\$7,743,750	-17.5%	\$286,806	0.8%	\$245,000	-5.8%	\$184	-10.7%	112	55	21	18		84.5%	
Townhouse	-	0.0%	-	0.0%	-	0.0%	-	0.0%	-	0.0%	-	-	-	-	-	0.0%	
YTD:	-	0.0%	-	0.0%	-	0.0%	-	0.0%	-	0.0%	-	-	-	-	-	0.0%	
Condominium	-	0.0%	-	0.0%	-	0.0%	-	0.0%	-	0.0%	-	-	-	-	-	0.0%	
YTD:	-	0.0%	-	0.0%	-	0.0%	-	0.0%	-	0.0%	-	-	-	-	-	0.0%	
Existing Home																	
Residential (SF/COND/TH)	2	0.0%	\$445,000	53.2%	\$222,500	53.2%	\$222,500	53.2%	\$188	90.2%	132	2	16	1	7.1	81.2%	
YTD:	27	-15.6%	\$7,743,750	-14.6%	\$286,806	1.3%	\$245,000	-3.9%	\$184	-10.3%	112	54	20	18		84.5%	
Single Family	2	0.0%	\$445,000	53.2%	\$222,500	53.2%	\$222,500	53.2%	\$188	90.2%	132	2	16	1	7.1	81.2%	
YTD:	27	-15.6%	\$7,743,750	-14.6%	\$286,806	1.3%	\$245,000	-3.9%	\$184	-10.3%	112	54	20	18		84.5%	
Townhouse	-	0.0%	-	0.0%	-	0.0%	-	0.0%	-	0.0%	-	-	-	-	-	0.0%	
YTD:	-	0.0%	-	0.0%	-	0.0%	-	0.0%	-	0.0%	-	-	-	-	-	0.0%	
Condominium	-	0.0%	-	0.0%	-	0.0%	-	0.0%	-	0.0%	-	-	-	-	-	0.0%	
YTD:	-	0.0%	-	0.0%	-	0.0%	-	0.0%	-	0.0%	-	-	-	-	-	0.0%	
New Construction																	
Residential (SF/COND/TH)	-	0.0%	-	0.0%	-	0.0%	-	0.0%	-	0.0%	-	-	-	1	-	-	0.0%
YTD:	-	-100.0%	-	-100.0%	-	-100.0%	-	-100.0%	-	-100.0%	-	1	1	-	-	0.0%	
Single Family	-	0.0%	-	0.0%	-	0.0%	-	0.0%	-	0.0%	-	-	-	1	-	-	0.0%
YTD:	-	-100.0%	-	-100.0%	-	-100.0%	-	-100.0%	-	-100.0%	-	1	1	-	-	0.0%	
Townhouse	-	0.0%	-	0.0%	-	0.0%	-	0.0%	-	0.0%	-	-	-	-	-	-	0.0%
YTD:	-	0.0%	-	0.0%	-	0.0%	-	0.0%	-	0.0%	-	-	-	-	-	0.0%	
Condominium	-	0.0%	-	0.0%	-	0.0%	-	0.0%	-	0.0%	-	-	-	-	-	-	0.0%
YTD:	-	0.0%	-	0.0%	-	0.0%	-	0.0%	-	0.0%	-	-	-	-	-	0.0%	

* Local Market Area Code: 620; Type: Census Place Group
 ** Closed Sale counts for most recent 3 months are Preliminary.

Market Analysis By Local Market Area*: Round Mountain

Property Type	Closed Sales**	YoY%	Dollar Volume	YoY%	Average Price	YoY%	Median Price	YoY%	Price/Sqft	YoY%	DOM	New Listings	Active Listings	Pending Sales	Months Inventory	Close To OLP
All(New and Existing)																
Residential (SF/COND/TH)	-	0.0%	-	0.0%	-	0.0%	-	0.0%	-	0.0%	-	-	1	-	12.0	0.0%
YTD:	1	100.0%	\$1,050,000	100.0%	\$1,050,000	100.0%	\$1,050,000	100.0%	\$356	100.0%	6	4	1	1		93.7%
Single Family	-	0.0%	-	0.0%	-	0.0%	-	0.0%	-	0.0%	-	-	1	-	12.0	0.0%
YTD:	1	100.0%	\$1,050,000	100.0%	\$1,050,000	100.0%	\$1,050,000	100.0%	\$356	100.0%	6	4	1	1		93.7%
Townhouse	-	0.0%	-	0.0%	-	0.0%	-	0.0%	-	0.0%	-	-	-	-	-	0.0%
YTD:	-	0.0%	-	0.0%	-	0.0%	-	0.0%	-	0.0%	-	-	-	-	-	0.0%
Condominium	-	0.0%	-	0.0%	-	0.0%	-	0.0%	-	0.0%	-	-	-	-	-	0.0%
YTD:	-	0.0%	-	0.0%	-	0.0%	-	0.0%	-	0.0%	-	-	-	-	-	0.0%
Existing Home																
Residential (SF/COND/TH)	-	0.0%	-	0.0%	-	0.0%	-	0.0%	-	0.0%	-	-	1	-	-	0.0%
YTD:	-	0.0%	-	0.0%	-	0.0%	-	0.0%	-	0.0%	-	2	1	-	-	0.0%
Single Family	-	0.0%	-	0.0%	-	0.0%	-	0.0%	-	0.0%	-	-	1	-	-	0.0%
YTD:	-	0.0%	-	0.0%	-	0.0%	-	0.0%	-	0.0%	-	2	1	-	-	0.0%
Townhouse	-	0.0%	-	0.0%	-	0.0%	-	0.0%	-	0.0%	-	-	-	-	-	0.0%
YTD:	-	0.0%	-	0.0%	-	0.0%	-	0.0%	-	0.0%	-	-	-	-	-	0.0%
Condominium	-	0.0%	-	0.0%	-	0.0%	-	0.0%	-	0.0%	-	-	-	-	-	0.0%
YTD:	-	0.0%	-	0.0%	-	0.0%	-	0.0%	-	0.0%	-	-	-	-	-	0.0%
New Construction																
Residential (SF/COND/TH)	-	0.0%	-	0.0%	-	0.0%	-	0.0%	-	0.0%	-	-	-	-	-	0.0%
YTD:	1	100.0%	\$1,050,000	100.0%	\$1,050,000	100.0%	\$1,050,000	100.0%	\$356	100.0%	6	2	1	1		93.7%
Single Family	-	0.0%	-	0.0%	-	0.0%	-	0.0%	-	0.0%	-	-	-	-	-	0.0%
YTD:	1	100.0%	\$1,050,000	100.0%	\$1,050,000	100.0%	\$1,050,000	100.0%	\$356	100.0%	6	2	1	1		93.7%
Townhouse	-	0.0%	-	0.0%	-	0.0%	-	0.0%	-	0.0%	-	-	-	-	-	0.0%
YTD:	-	0.0%	-	0.0%	-	0.0%	-	0.0%	-	0.0%	-	-	-	-	-	0.0%
Condominium	-	0.0%	-	0.0%	-	0.0%	-	0.0%	-	0.0%	-	-	-	-	-	0.0%
YTD:	-	0.0%	-	0.0%	-	0.0%	-	0.0%	-	0.0%	-	-	-	-	-	0.0%

* Local Market Area Code: 871; Type: Census Place Group
 ** Closed Sale counts for most recent 3 months are Preliminary.

Market Analysis By Local Market Area*: Stonewall

Property Type	Closed Sales**	YoY%	Dollar Volume	YoY%	Average Price	YoY%	Median Price	YoY%	Price/Sqft	YoY%	DOM	New Listings	Active Listings	Pending Sales	Months Inventory	Close To OLP
All(New and Existing)																
Residential (SF/COND/TH)	1	100.0%	\$670,000	100.0%	\$670,000	100.0%	\$670,000	100.0%	\$238	100.0%	62	-	2	-	12.0	95.9%
YTD:	2	-33.3%	\$1,342,000	-44.4%	\$671,000	-16.7%	\$671,000	-10.5%	\$343	-39.4%	33	8	2	1		96.3%
Single Family	1	100.0%	\$670,000	100.0%	\$670,000	100.0%	\$670,000	100.0%	\$238	100.0%	62	-	2	-	12.0	95.9%
YTD:	2	-33.3%	\$1,342,000	-44.4%	\$671,000	-16.7%	\$671,000	-10.5%	\$343	-39.4%	33	8	2	1		96.3%
Townhouse	-	0.0%	-	0.0%	-	0.0%	-	0.0%	-	0.0%	-	-	-	-	-	0.0%
YTD:	-	0.0%	-	0.0%	-	0.0%	-	0.0%	-	0.0%	-	-	-	-	-	0.0%
Condominium	-	0.0%	-	0.0%	-	0.0%	-	0.0%	-	0.0%	-	-	-	-	-	0.0%
YTD:	-	0.0%	-	0.0%	-	0.0%	-	0.0%	-	0.0%	-	-	-	-	-	0.0%
Existing Home																
Residential (SF/COND/TH)	1	100.0%	\$670,000	100.0%	\$670,000	100.0%	\$670,000	100.0%	\$238	100.0%	62	-	2	-	12.0	95.9%
YTD:	2	-33.3%	\$1,342,000	-44.4%	\$671,000	-16.7%	\$671,000	-10.5%	\$343	-39.4%	33	8	2	1		96.3%
Single Family	1	100.0%	\$670,000	100.0%	\$670,000	100.0%	\$670,000	100.0%	\$238	100.0%	62	-	2	-	12.0	95.9%
YTD:	2	-33.3%	\$1,342,000	-44.4%	\$671,000	-16.7%	\$671,000	-10.5%	\$343	-39.4%	33	8	2	1		96.3%
Townhouse	-	0.0%	-	0.0%	-	0.0%	-	0.0%	-	0.0%	-	-	-	-	-	0.0%
YTD:	-	0.0%	-	0.0%	-	0.0%	-	0.0%	-	0.0%	-	-	-	-	-	0.0%
Condominium	-	0.0%	-	0.0%	-	0.0%	-	0.0%	-	0.0%	-	-	-	-	-	0.0%
YTD:	-	0.0%	-	0.0%	-	0.0%	-	0.0%	-	0.0%	-	-	-	-	-	0.0%
New Construction																
Residential (SF/COND/TH)	-	0.0%	-	0.0%	-	0.0%	-	0.0%	-	0.0%	-	-	-	-	-	0.0%
YTD:	-	0.0%	-	0.0%	-	0.0%	-	0.0%	-	0.0%	-	-	-	-	-	0.0%
Single Family	-	0.0%	-	0.0%	-	0.0%	-	0.0%	-	0.0%	-	-	-	-	-	0.0%
YTD:	-	0.0%	-	0.0%	-	0.0%	-	0.0%	-	0.0%	-	-	-	-	-	0.0%
Townhouse	-	0.0%	-	0.0%	-	0.0%	-	0.0%	-	0.0%	-	-	-	-	-	0.0%
YTD:	-	0.0%	-	0.0%	-	0.0%	-	0.0%	-	0.0%	-	-	-	-	-	0.0%
Condominium	-	0.0%	-	0.0%	-	0.0%	-	0.0%	-	0.0%	-	-	-	-	-	0.0%
YTD:	-	0.0%	-	0.0%	-	0.0%	-	0.0%	-	0.0%	-	-	-	-	-	0.0%

* Local Market Area Code: 966; Type: Census Place Group
 ** Closed Sale counts for most recent 3 months are Preliminary.

