

Market Analysis By State: Texas

Property Type	Closed Sales*	YoY%	Dollar Volume	YoY%	Average Price	YoY%	Median Price	YoY%	Price/ Sqft	YoY%	DOM	New Listings	Active Listings	Pending Sales	Months Inventory	Close To OLP
<u>All(New and Existing)</u>																
Residential (SF/COND/TH)	28,191	-1.5%	\$12,040,987,461	1.4%	\$427,122	2.9%	\$339,990	1.0%	\$191	0.2%	71	56,628	132,993	32,225	4.8	94.6%
YTD:	70,944	-1.5%	\$29,340,745,165	0.6%	\$413,576	2.1%	\$331,000	0.3%	\$188	0.0%	72	149,521	125,499	84,015		94.1%
Single Family	26,751	-1.0%	\$11,514,762,213	1.8%	\$430,442	2.8%	\$340,000	0.2%	\$189	0.4%	71	52,484	121,542	30,578	4.7	94.6%
YTD:	67,093	-1.3%	\$27,950,828,353	0.6%	\$416,598	1.9%	\$334,900	0.3%	\$186	0.1%	72	138,317	115,006	79,654		94.1%
Townhouse	649	-11.6%	\$241,275,748	-8.6%	\$371,765	3.4%	\$337,500	2.3%	\$198	1.0%	65	1,635	3,885	787	5.7	95.1%
YTD:	1,756	-7.2%	\$644,322,761	-3.8%	\$366,926	3.7%	\$330,000	1.5%	\$196	1.1%	68	4,522	3,633	2,045		94.8%
Condominium	774	-9.7%	\$279,861,808	-6.3%	\$361,579	3.8%	\$250,000	-5.7%	\$258	-2.5%	80	2,509	7,566	860	9.3	92.8%
YTD:	2,060	-4.7%	\$733,920,934	0.1%	\$356,272	5.1%	\$250,000	-2.0%	\$256	-2.0%	86	6,682	6,860	2,316		92.2%
<u>Existing Home</u>																
Residential (SF/COND/TH)	20,338	-1.5%	\$8,782,976,636	3.4%	\$431,851	5.0%	\$332,250	2.2%	\$193	1.2%	65	44,593	100,904	22,680	5.0	94.6%
YTD:	51,033	-1.7%	\$21,224,366,621	1.8%	\$415,895	3.5%	\$325,000	1.6%	\$189	0.8%	68	114,995	93,229	59,130		94.0%
Single Family	19,047	-1.4%	\$8,326,739,090	3.6%	\$437,168	5.0%	\$335,000	1.5%	\$190	1.5%	64	40,873	90,972	21,264	4.9	94.6%
YTD:	47,665	-1.6%	\$20,059,987,955	1.8%	\$420,854	3.5%	\$327,990	0.9%	\$186	0.9%	68	105,108	84,254	55,353		94.1%
Townhouse	533	1.1%	\$190,520,304	3.7%	\$357,449	2.5%	\$315,000	2.4%	\$192	1.0%	58	1,338	2,959	611	5.7	95.2%
YTD:	1,371	-2.9%	\$482,311,950	0.4%	\$351,796	3.4%	\$310,000	2.0%	\$190	1.1%	62	3,562	2,711	1,596		94.7%
Condominium	736	-9.4%	\$258,547,706	-4.7%	\$351,288	5.1%	\$245,000	-3.9%	\$257	-0.9%	79	2,382	6,973	805	9.1	92.8%
YTD:	1,961	-4.0%	\$670,334,373	0.1%	\$341,833	4.3%	\$242,745	-2.0%	\$254	-1.8%	84	6,325	6,264	2,181		92.2%
<u>New Construction</u>																
Residential (SF/COND/TH)	7,844	-1.5%	\$3,253,800,375	-3.7%	\$414,814	-2.3%	\$350,000	-1.4%	\$187	-2.5%	87	12,035	32,089	9,545	4.3	94.5%
YTD:	19,889	-1.2%	\$8,107,072,739	-2.7%	\$407,616	-1.5%	\$345,000	-1.4%	\$185	-1.9%	83	34,526	32,269	24,885		94.3%
Single Family	7,689	-0.3%	\$3,181,077,301	-2.8%	\$413,718	-2.5%	\$349,900	-1.3%	\$186	-2.3%	87	11,611	30,570	9,314	4.2	94.5%
YTD:	19,403	-0.7%	\$7,880,085,489	-2.4%	\$406,127	-1.8%	\$344,083	-1.7%	\$183	-1.8%	82	33,209	30,752	24,301		94.3%
Townhouse	116	-44.0%	\$50,685,370	-36.8%	\$436,943	12.8%	\$390,471	8.5%	\$225	6.7%	98	297	926	176	5.8	94.3%
YTD:	381	-20.8%	\$160,439,626	-15.2%	\$421,101	7.0%	\$377,977	2.6%	\$218	3.0%	89	960	922	449		94.8%
Condominium	37	-17.8%	\$20,972,534	-23.0%	\$566,825	-6.4%	\$386,115	-21.2%	\$293	-20.9%	106	127	593	55	12.2	92.1%
YTD:	98	-17.7%	\$63,215,849	-0.2%	\$645,060	21.2%	\$396,990	-17.3%	\$312	-3.1%	119	357	595	135		91.7%

* Closed Sale counts for most recent 3 months are Preliminary.

Trend Analysis By State: Texas

Residential, All (New and Existing)



Single Family, New vs. Existing



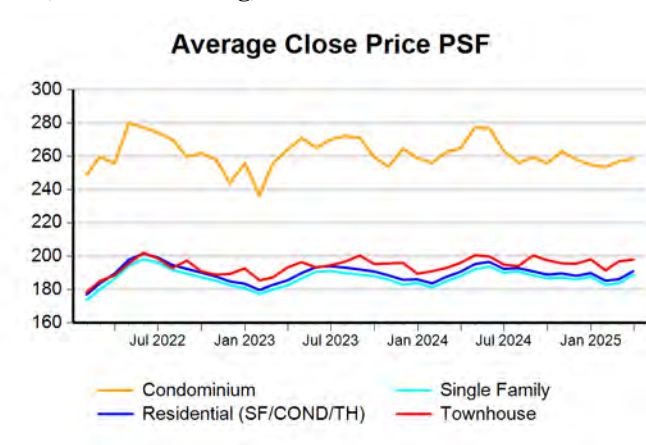
COND/TH, All (New and Existing)



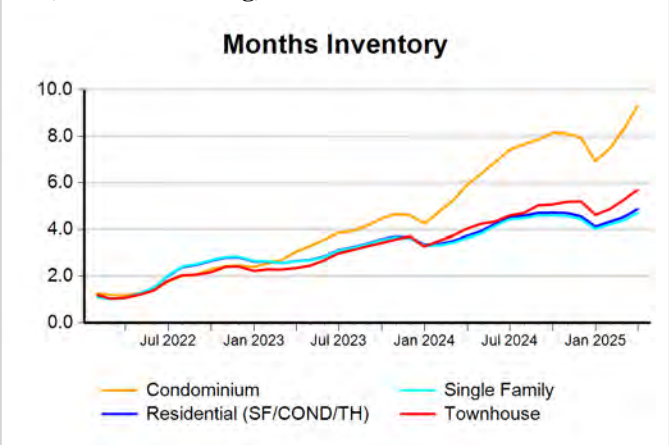
All (New and Existing) Construction



All (New and Existing) Construction



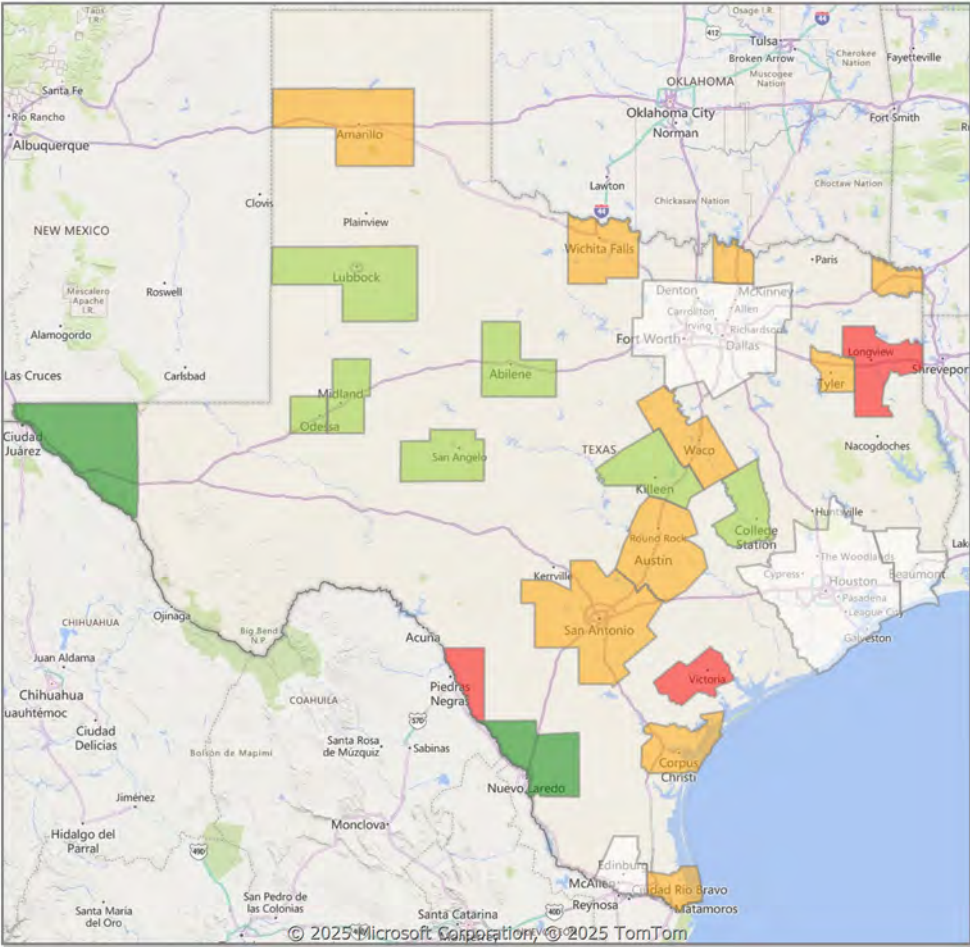
All (New and Existing) Construction



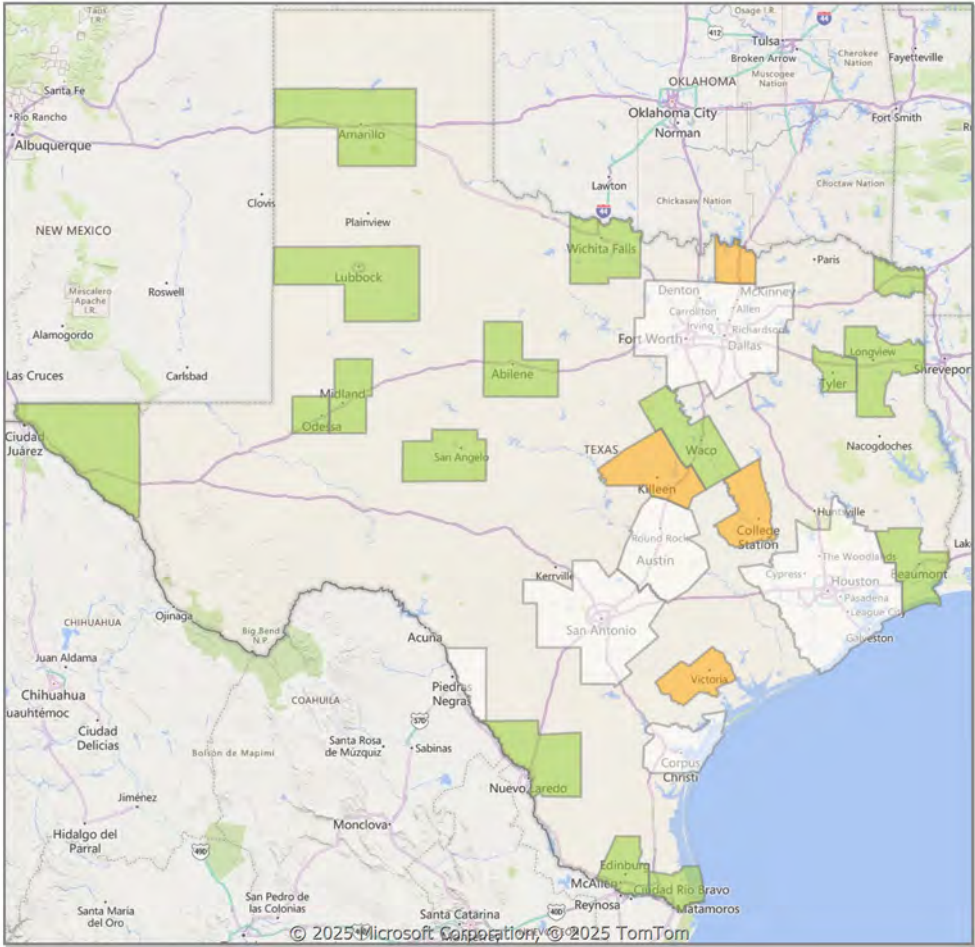
* Closed Sale counts for most recent 3 months are Preliminary.

Comparison By Metropolitan Statistical Area in Texas

Residential* Closed Sales
YoY Percentage Change



Residential* Avg Close Price Per SqFt
YoY Percentage Change

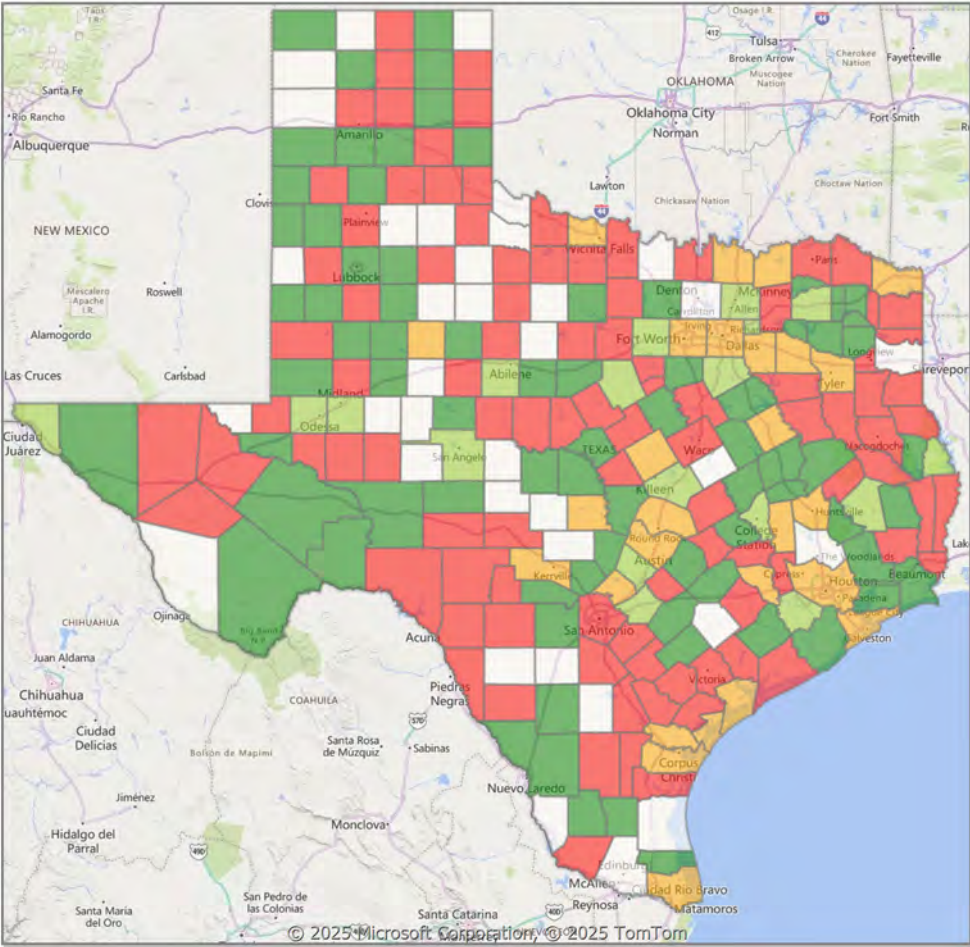


* Residential includes Single Family, Condominium and Townhouse.

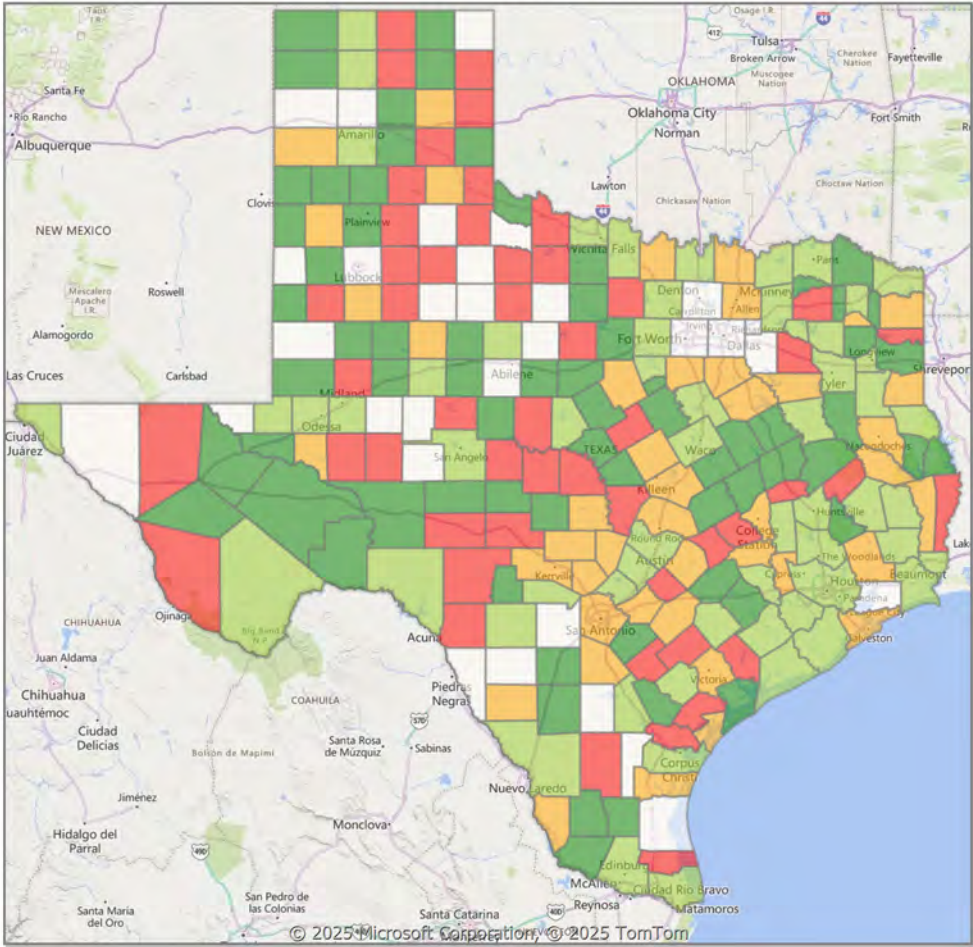


Comparison By County in Texas

Residential* Closed Sales
YoY Percentage Change



Residential* Avg Close Price Per SqFt
YoY Percentage Change



* Residential includes Single Family, Condominium and Townhouse.



Market Analysis By County: Blanco County

Property Type	Closed Sales*	YoY%	Dollar Volume	YoY%	Average Price	YoY%	Median Price	YoY%	Price/ Sqft	YoY%	DOM	New Listings	Active Listings	Pending Sales	Months Inventory	Close To OLP
<u>All(New and Existing)</u>																
Residential (SF/COND/TH)	14	27.3%	\$7,843,015	-0.7%	\$560,215	-21.9%	\$432,000	-2.5%	\$285	-7.6%	84	49	171	8	13.3	93.7%
YTD:	28	-9.7%	\$13,405,334	-32.3%	\$478,762	-25.0%	\$432,000	-13.6%	\$268	-43.6%	117	101	146	31		91.3%
Single Family	14	27.3%	\$7,843,015	-0.7%	\$560,215	-21.9%	\$432,000	-2.5%	\$285	-7.6%	84	49	170	8	13.2	93.7%
YTD:	28	-9.7%	\$13,405,334	-32.3%	\$478,762	-25.0%	\$432,000	-13.6%	\$268	-43.6%	117	101	145	31		91.3%
Townhouse	-	0.0%	-	0.0%	-	0.0%	-	0.0%	-	0.0%	-	-	-	-	-	0.0%
YTD:	-	0.0%	-	0.0%	-	0.0%	-	0.0%	-	0.0%	-	-	-	-	-	0.0%
Condominium	-	0.0%	-	0.0%	-	0.0%	-	0.0%	-	0.0%	-	-	1	-	-	0.0%
YTD:	-	0.0%	-	0.0%	-	0.0%	-	0.0%	-	0.0%	-	-	1	-	-	0.0%
<u>Existing Home</u>																
Residential (SF/COND/TH)	10	0.0%	\$6,351,000	-17.0%	\$635,100	-17.0%	\$527,000	14.8%	\$310	-3.4%	93	33	120	8	12.6	91.9%
YTD:	24	0.0%	\$11,994,772	-26.9%	\$499,782	-26.9%	\$441,250	-14.3%	\$277	-48.3%	125	70	104	28		90.2%
Single Family	10	0.0%	\$6,351,000	-17.0%	\$635,100	-17.0%	\$527,000	14.8%	\$310	-3.4%	93	33	119	8	12.5	91.9%
YTD:	24	0.0%	\$11,994,772	-26.9%	\$499,782	-26.9%	\$441,250	-14.3%	\$277	-48.3%	125	70	103	28		90.2%
Townhouse	-	0.0%	-	0.0%	-	0.0%	-	0.0%	-	0.0%	-	-	-	-	-	0.0%
YTD:	-	0.0%	-	0.0%	-	0.0%	-	0.0%	-	0.0%	-	-	-	-	-	0.0%
Condominium	-	0.0%	-	0.0%	-	0.0%	-	0.0%	-	0.0%	-	-	1	-	-	0.0%
YTD:	-	0.0%	-	0.0%	-	0.0%	-	0.0%	-	0.0%	-	-	1	-	-	0.0%
<u>New Construction</u>																
Residential (SF/COND/TH)	3	200.0%	\$931,800	277.4%	\$310,600	25.8%	\$249,900	1.2%	\$204	7.3%	56	16	51	-	15.7	99.8%
YTD:	3	-57.1%	\$931,800	-72.6%	\$310,600	-36.0%	\$249,900	-48.5%	\$204	-14.6%	56	31	41	3		99.8%
Single Family	3	200.0%	\$931,800	277.4%	\$310,600	25.8%	\$249,900	1.2%	\$204	7.3%	56	16	51	-	15.7	99.8%
YTD:	3	-57.1%	\$931,800	-72.6%	\$310,600	-36.0%	\$249,900	-48.5%	\$204	-14.6%	56	31	41	3		99.8%
Townhouse	-	0.0%	-	0.0%	-	0.0%	-	0.0%	-	0.0%	-	-	-	-	-	0.0%
YTD:	-	0.0%	-	0.0%	-	0.0%	-	0.0%	-	0.0%	-	-	-	-	-	0.0%
Condominium	-	0.0%	-	0.0%	-	0.0%	-	0.0%	-	0.0%	-	-	-	-	-	0.0%
YTD:	-	0.0%	-	0.0%	-	0.0%	-	0.0%	-	0.0%	-	-	-	-	-	0.0%

* Closed Sale counts for most recent 3 months are Preliminary.

Market Analysis By County: Gillespie County

Property Type	Closed Sales*	YoY%	Dollar Volume	YoY%	Average Price	YoY%	Median Price	YoY%	Price/ Sqft	YoY%	DOM	New Listings	Active Listings	Pending Sales	Months Inventory	Close To OLP
<u>All(New and Existing)</u>																
Residential (SF/COND/TH)	37	0.0%	\$23,905,709	7.7%	\$646,100	7.7%	\$445,000	-6.1%	\$326	-6.5%	96	100	401	44	10.7	92.8%
YTD:	91	8.3%	\$58,854,872	15.8%	\$646,757	6.9%	\$445,000	-7.9%	\$333	-5.1%	117	289	372	91		91.7%
Single Family	37	0.0%	\$23,905,709	7.7%	\$646,100	7.7%	\$445,000	-6.1%	\$326	-6.5%	96	97	392	44	10.5	92.8%
YTD:	90	7.1%	\$58,513,442	15.1%	\$650,149	7.5%	\$447,495	-7.4%	\$331	-5.5%	117	285	363	91		91.7%
Townhouse	-	0.0%	-	0.0%	-	0.0%	-	0.0%	-	0.0%	-	-	-	-	-	0.0%
YTD:	-	0.0%	-	0.0%	-	0.0%	-	0.0%	-	0.0%	-	-	-	-	-	0.0%
Condominium	-	0.0%	-	0.0%	-	0.0%	-	0.0%	-	0.0%	-	3	9	-	108.0	0.0%
YTD:	1	100.0%	\$355,000	100.0%	\$355,000	100.0%	\$355,000	100.0%	\$443	100.0%	80	4	8	-		94.7%
<u>Existing Home</u>																
Residential (SF/COND/TH)	29	-6.5%	\$20,683,328	9.1%	\$713,218	16.7%	\$454,100	-6.4%	\$346	-5.4%	111	92	364	32	13.6	91.7%
YTD:	72	-2.7%	\$51,471,812	12.5%	\$714,886	15.6%	\$500,000	-1.5%	\$364	0.3%	129	254	332	64		90.5%
Single Family	29	-6.5%	\$20,683,328	9.1%	\$713,218	16.7%	\$454,100	-6.4%	\$346	-5.4%	111	89	356	32	13.4	91.7%
YTD:	71	-4.1%	\$51,132,689	11.7%	\$720,179	16.4%	\$502,500	-1.0%	\$363	-0.1%	130	250	325	64		90.5%
Townhouse	-	0.0%	-	0.0%	-	0.0%	-	0.0%	-	0.0%	-	-	-	-	-	0.0%
YTD:	-	0.0%	-	0.0%	-	0.0%	-	0.0%	-	0.0%	-	-	-	-	-	0.0%
Condominium	-	0.0%	-	0.0%	-	0.0%	-	0.0%	-	0.0%	-	3	8	-	96.0	0.0%
YTD:	1	100.0%	\$355,000	100.0%	\$355,000	100.0%	\$355,000	100.0%	\$443	100.0%	80	4	7	-		94.7%
<u>New Construction</u>																
Residential (SF/COND/TH)	8	33.3%	\$3,174,440	-1.9%	\$396,805	-26.5%	\$319,999	-1.2%	\$251	-3.6%	38	8	37	12	3.5	96.6%
YTD:	19	90.0%	\$7,326,286	44.9%	\$385,594	-23.8%	\$352,500	-17.7%	\$214	-18.1%	70	35	40	27		95.8%
Single Family	8	33.3%	\$3,174,440	-1.9%	\$396,805	-26.5%	\$319,999	-1.2%	\$251	-3.6%	38	8	36	12	3.4	96.6%
YTD:	19	90.0%	\$7,326,286	44.9%	\$385,594	-23.8%	\$352,500	-17.7%	\$214	-18.1%	70	35	38	27		95.8%
Townhouse	-	0.0%	-	0.0%	-	0.0%	-	0.0%	-	0.0%	-	-	-	-	-	0.0%
YTD:	-	0.0%	-	0.0%	-	0.0%	-	0.0%	-	0.0%	-	-	-	-	-	0.0%
Condominium	-	0.0%	-	0.0%	-	0.0%	-	0.0%	-	0.0%	-	-	1	-	-	0.0%
YTD:	-	0.0%	-	0.0%	-	0.0%	-	0.0%	-	0.0%	-	-	1	-	-	0.0%

* Closed Sale counts for most recent 3 months are Preliminary.

Market Analysis By County: Kimble County

Property Type	Closed Sales*	YoY%	Dollar Volume	YoY%	Average Price	YoY%	Median Price	YoY%	Price/ Sqft	YoY%	DOM	New Listings	Active Listings	Pending Sales	Months Inventory	Close To OLP
<u>All(New and Existing)</u>																
Residential (SF/COND/TH)	1	-50.0%	\$265,000	-75.0%	\$265,000	-50.0%	\$265,000	-50.0%	\$112	-65.3%	211	4	16	1	10.1	91.7%
YTD:	4	33.3%	\$1,855,500	67.3%	\$463,875	25.5%	\$207,500	72.9%	\$191	-17.0%	224	8	16	2		80.2%
Single Family	1	-50.0%	\$265,000	-75.0%	\$265,000	-50.0%	\$265,000	-50.0%	\$112	-65.3%	211	4	16	1	10.1	91.7%
YTD:	4	33.3%	\$1,855,500	67.3%	\$463,875	25.5%	\$207,500	72.9%	\$191	-17.0%	224	8	16	2		80.2%
Townhouse	-	0.0%	-	0.0%	-	0.0%	-	0.0%	-	0.0%	-	-	-	-	-	0.0%
YTD:	-	0.0%	-	0.0%	-	0.0%	-	0.0%	-	0.0%	-	-	-	-	-	0.0%
Condominium	-	0.0%	-	0.0%	-	0.0%	-	0.0%	-	0.0%	-	-	-	-	-	0.0%
YTD:	-	0.0%	-	0.0%	-	0.0%	-	0.0%	-	0.0%	-	-	-	-	-	0.0%
<u>Existing Home</u>																
Residential (SF/COND/TH)	1	-50.0%	\$265,000	-75.0%	\$265,000	-50.0%	\$265,000	-50.0%	\$112	-65.3%	211	4	15	1	10.6	91.7%
YTD:	4	33.3%	\$1,855,500	67.3%	\$463,875	25.5%	\$207,500	72.9%	\$191	-17.0%	224	8	15	2		80.2%
Single Family	1	-50.0%	\$265,000	-75.0%	\$265,000	-50.0%	\$265,000	-50.0%	\$112	-65.3%	211	4	15	1	10.6	91.7%
YTD:	4	33.3%	\$1,855,500	67.3%	\$463,875	25.5%	\$207,500	72.9%	\$191	-17.0%	224	8	15	2		80.2%
Townhouse	-	0.0%	-	0.0%	-	0.0%	-	0.0%	-	0.0%	-	-	-	-	-	0.0%
YTD:	-	0.0%	-	0.0%	-	0.0%	-	0.0%	-	0.0%	-	-	-	-	-	0.0%
Condominium	-	0.0%	-	0.0%	-	0.0%	-	0.0%	-	0.0%	-	-	-	-	-	0.0%
YTD:	-	0.0%	-	0.0%	-	0.0%	-	0.0%	-	0.0%	-	-	-	-	-	0.0%
<u>New Construction</u>																
Residential (SF/COND/TH)	-	0.0%	-	0.0%	-	0.0%	-	0.0%	-	0.0%	-	-	1	-	6.0	0.0%
YTD:	-	0.0%	-	0.0%	-	0.0%	-	0.0%	-	0.0%	-	-	1	-		0.0%
Single Family	-	0.0%	-	0.0%	-	0.0%	-	0.0%	-	0.0%	-	-	1	-	6.0	0.0%
YTD:	-	0.0%	-	0.0%	-	0.0%	-	0.0%	-	0.0%	-	-	1	-		0.0%
Townhouse	-	0.0%	-	0.0%	-	0.0%	-	0.0%	-	0.0%	-	-	-	-	-	0.0%
YTD:	-	0.0%	-	0.0%	-	0.0%	-	0.0%	-	0.0%	-	-	-	-	-	0.0%
Condominium	-	0.0%	-	0.0%	-	0.0%	-	0.0%	-	0.0%	-	-	-	-	-	0.0%
YTD:	-	0.0%	-	0.0%	-	0.0%	-	0.0%	-	0.0%	-	-	-	-	-	0.0%

* Closed Sale counts for most recent 3 months are Preliminary.

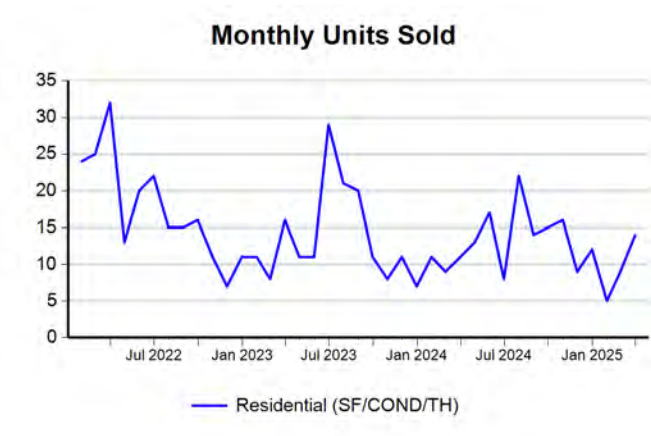
Market Analysis By County: Mason County

Property Type	Closed Sales*	YoY%	Dollar Volume	YoY%	Average Price	YoY%	Median Price	YoY%	Price/ Sqft	YoY%	DOM	New Listings	Active Listings	Pending Sales	Months Inventory	Close To OLP
<u>All(New and Existing)</u>																
Residential (SF/COND/TH)	3	0.0%	\$1,233,500	143.8%	\$411,167	143.8%	\$235,000	34.3%	\$148	22.2%	154	5	26	4	12.5	88.6%
YTD:	7	75.0%	\$3,728,000	365.4%	\$532,571	166.0%	\$270,000	44.0%	\$248	84.5%	161	15	26	8		91.3%
Single Family	3	0.0%	\$1,233,500	143.8%	\$411,167	143.8%	\$235,000	34.3%	\$148	22.2%	154	5	26	4	12.5	88.6%
YTD:	7	75.0%	\$3,728,000	365.4%	\$532,571	166.0%	\$270,000	44.0%	\$248	84.5%	161	15	26	8		91.3%
Townhouse	-	0.0%	-	0.0%	-	0.0%	-	0.0%	-	0.0%	-	-	-	-	-	0.0%
YTD:	-	0.0%	-	0.0%	-	0.0%	-	0.0%	-	0.0%	-	-	-	-	-	0.0%
Condominium	-	0.0%	-	0.0%	-	0.0%	-	0.0%	-	0.0%	-	-	-	-	-	0.0%
YTD:	-	0.0%	-	0.0%	-	0.0%	-	0.0%	-	0.0%	-	-	-	-	-	0.0%
<u>Existing Home</u>																
Residential (SF/COND/TH)	3	0.0%	\$1,233,500	143.8%	\$411,167	143.8%	\$235,000	34.3%	\$148	22.2%	154	5	26	3	13.0	88.6%
YTD:	7	75.0%	\$3,728,000	365.4%	\$532,571	166.0%	\$270,000	44.0%	\$248	84.5%	161	15	26	7		91.3%
Single Family	3	0.0%	\$1,233,500	143.8%	\$411,167	143.8%	\$235,000	34.3%	\$148	22.2%	154	5	26	3	13.0	88.6%
YTD:	7	75.0%	\$3,728,000	365.4%	\$532,571	166.0%	\$270,000	44.0%	\$248	84.5%	161	15	26	7		91.3%
Townhouse	-	0.0%	-	0.0%	-	0.0%	-	0.0%	-	0.0%	-	-	-	-	-	0.0%
YTD:	-	0.0%	-	0.0%	-	0.0%	-	0.0%	-	0.0%	-	-	-	-	-	0.0%
Condominium	-	0.0%	-	0.0%	-	0.0%	-	0.0%	-	0.0%	-	-	-	-	-	0.0%
YTD:	-	0.0%	-	0.0%	-	0.0%	-	0.0%	-	0.0%	-	-	-	-	-	0.0%
<u>New Construction</u>																
Residential (SF/COND/TH)	-	0.0%	-	0.0%	-	0.0%	-	0.0%	-	0.0%	-	-	-	1	-	0.0%
YTD:	-	0.0%	-	0.0%	-	0.0%	-	0.0%	-	0.0%	-	-	1	1		0.0%
Single Family	-	0.0%	-	0.0%	-	0.0%	-	0.0%	-	0.0%	-	-	-	1	-	0.0%
YTD:	-	0.0%	-	0.0%	-	0.0%	-	0.0%	-	0.0%	-	-	1	1		0.0%
Townhouse	-	0.0%	-	0.0%	-	0.0%	-	0.0%	-	0.0%	-	-	-	-	-	0.0%
YTD:	-	0.0%	-	0.0%	-	0.0%	-	0.0%	-	0.0%	-	-	-	-	-	0.0%
Condominium	-	0.0%	-	0.0%	-	0.0%	-	0.0%	-	0.0%	-	-	-	-	-	0.0%
YTD:	-	0.0%	-	0.0%	-	0.0%	-	0.0%	-	0.0%	-	-	-	-	-	0.0%

* Closed Sale counts for most recent 3 months are Preliminary.

Trend Analysis By County: Blanco County

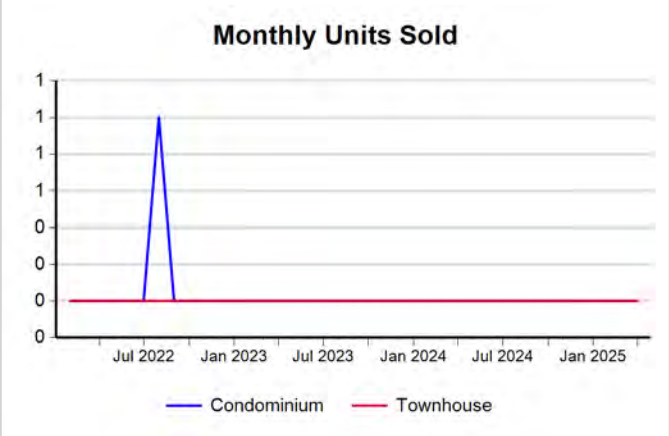
Residential, All (New and Existing)



Single Family, New vs. Existing



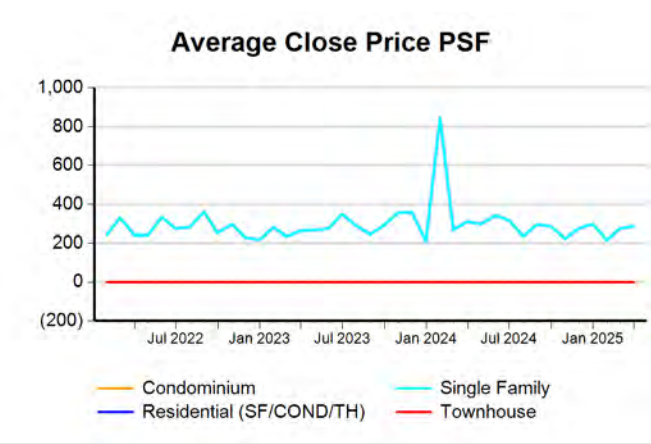
COND/TH, All (New and Existing)



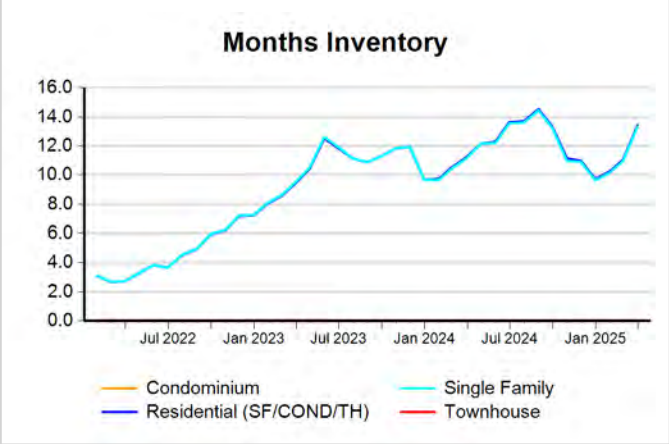
All (New and Existing) Construction



All (New and Existing) Construction



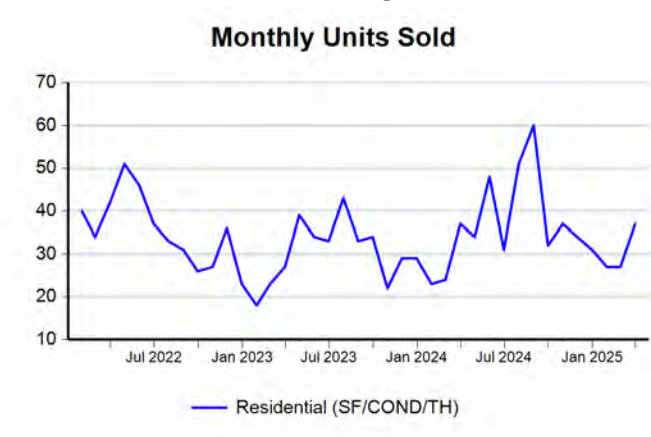
All (New and Existing) Construction



* Closed Sale counts for most recent 3 months are Preliminary.

Trend Analysis By County: Gillespie County

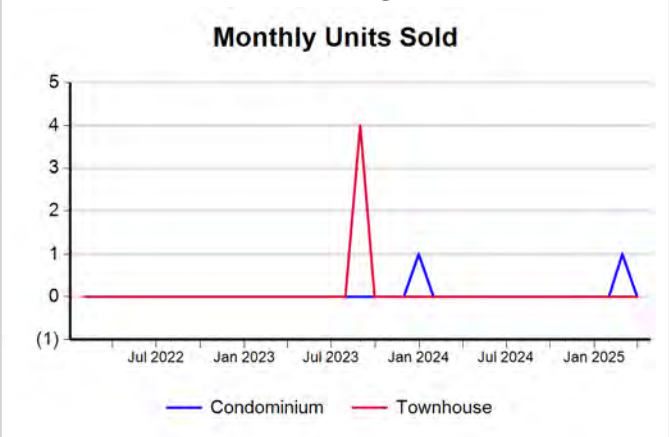
Residential, All (New and Existing)



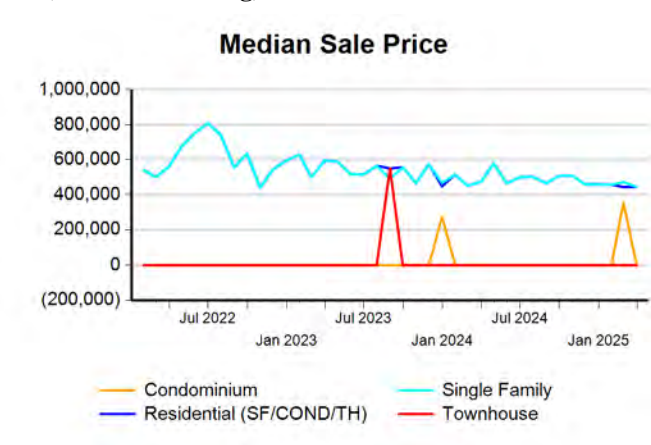
Single Family, New vs. Existing



COND/TH, All (New and Existing)



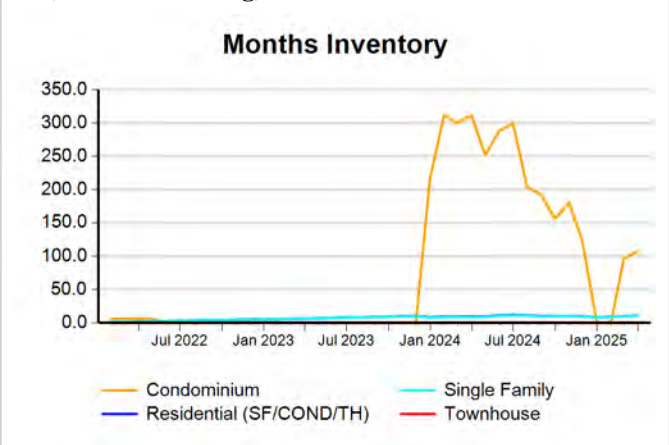
All (New and Existing) Construction



All (New and Existing) Construction



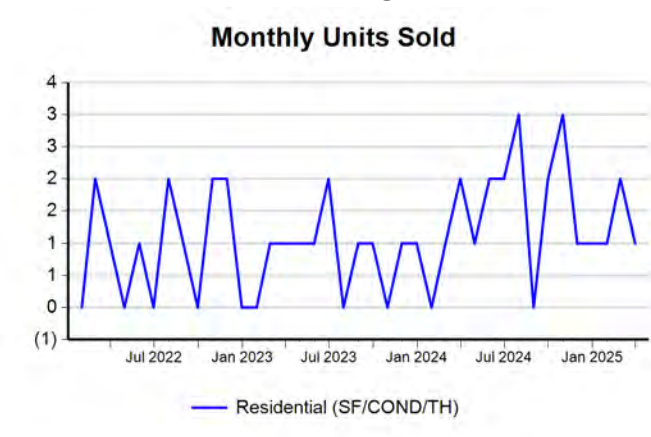
All (New and Existing) Construction



* Closed Sale counts for most recent 3 months are Preliminary.

Trend Analysis By County: Kimble County

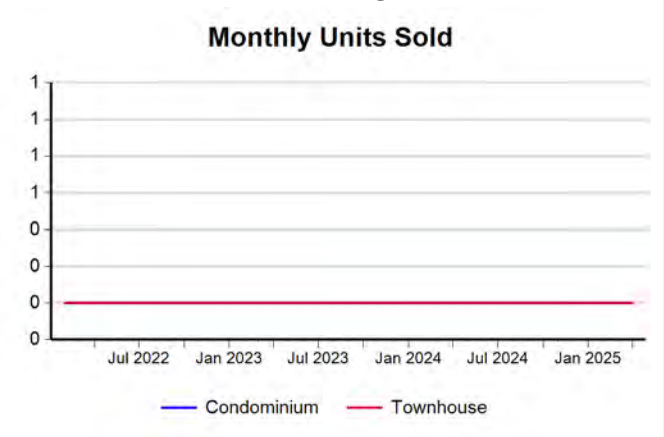
Residential, All (New and Existing)



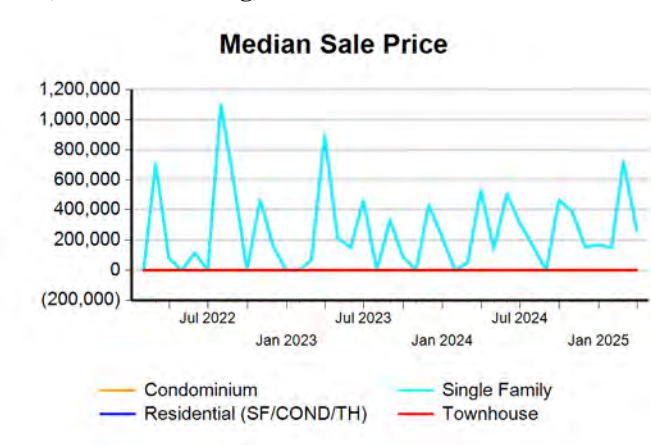
Single Family, New vs. Existing



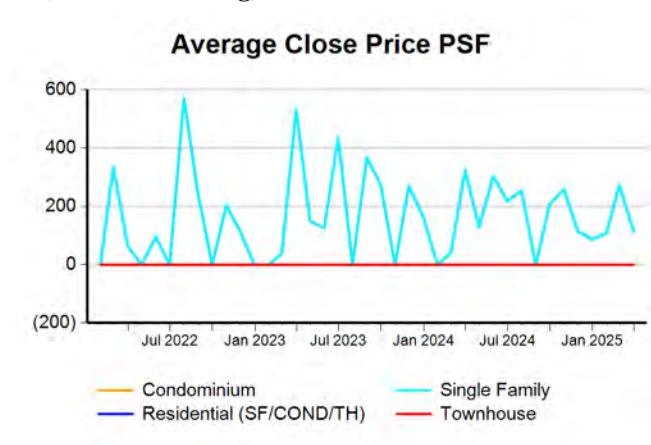
COND/TH, All (New and Existing)



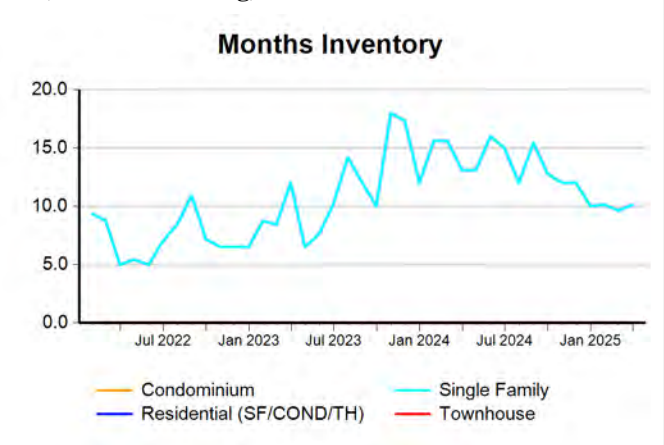
All (New and Existing) Construction



All (New and Existing) Construction



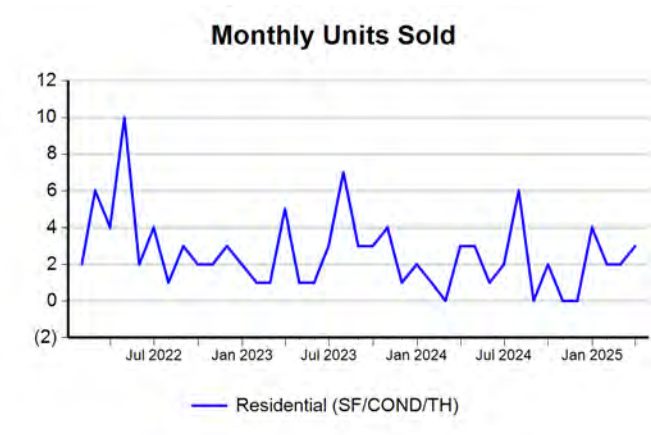
All (New and Existing) Construction



* Closed Sale counts for most recent 3 months are Preliminary.

Trend Analysis By County: Mason County

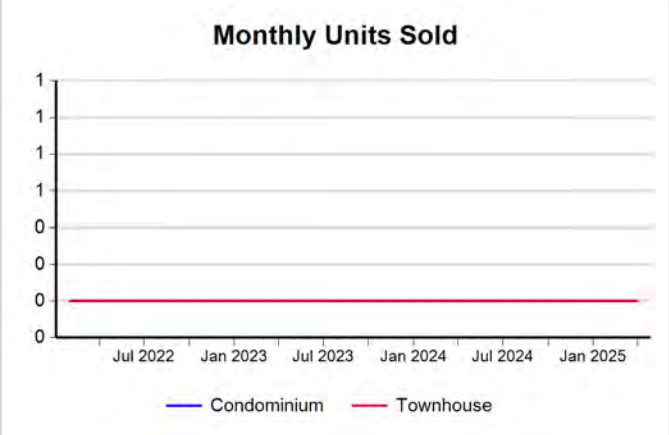
Residential, All (New and Existing)



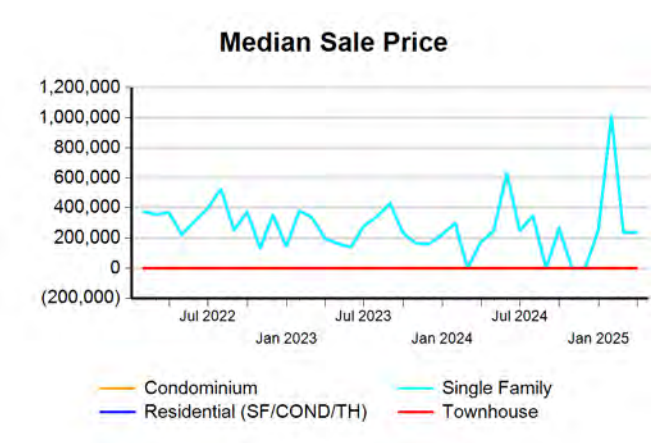
Single Family, New vs. Existing



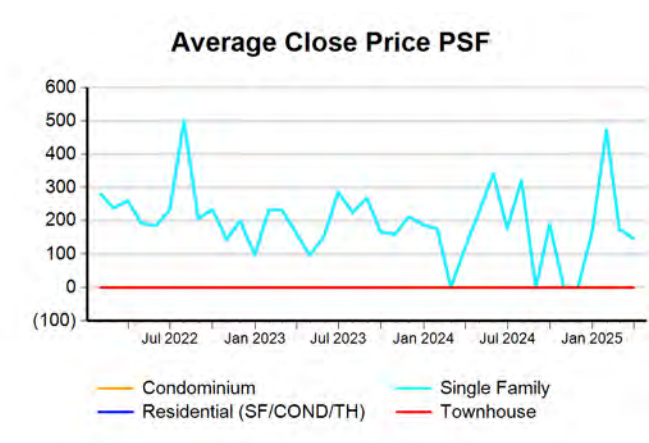
COND/TH, All (New and Existing)



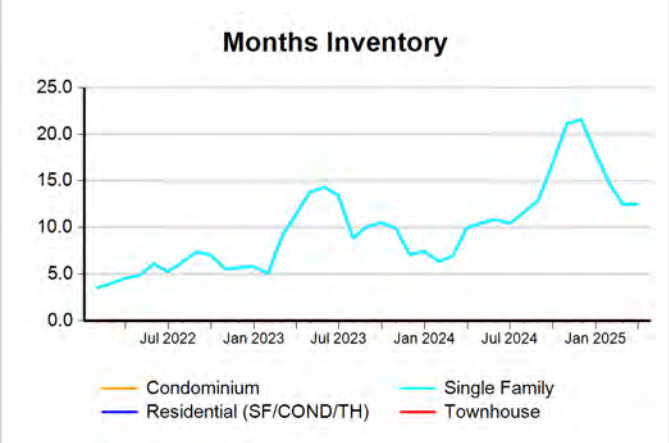
All (New and Existing) Construction



All (New and Existing) Construction

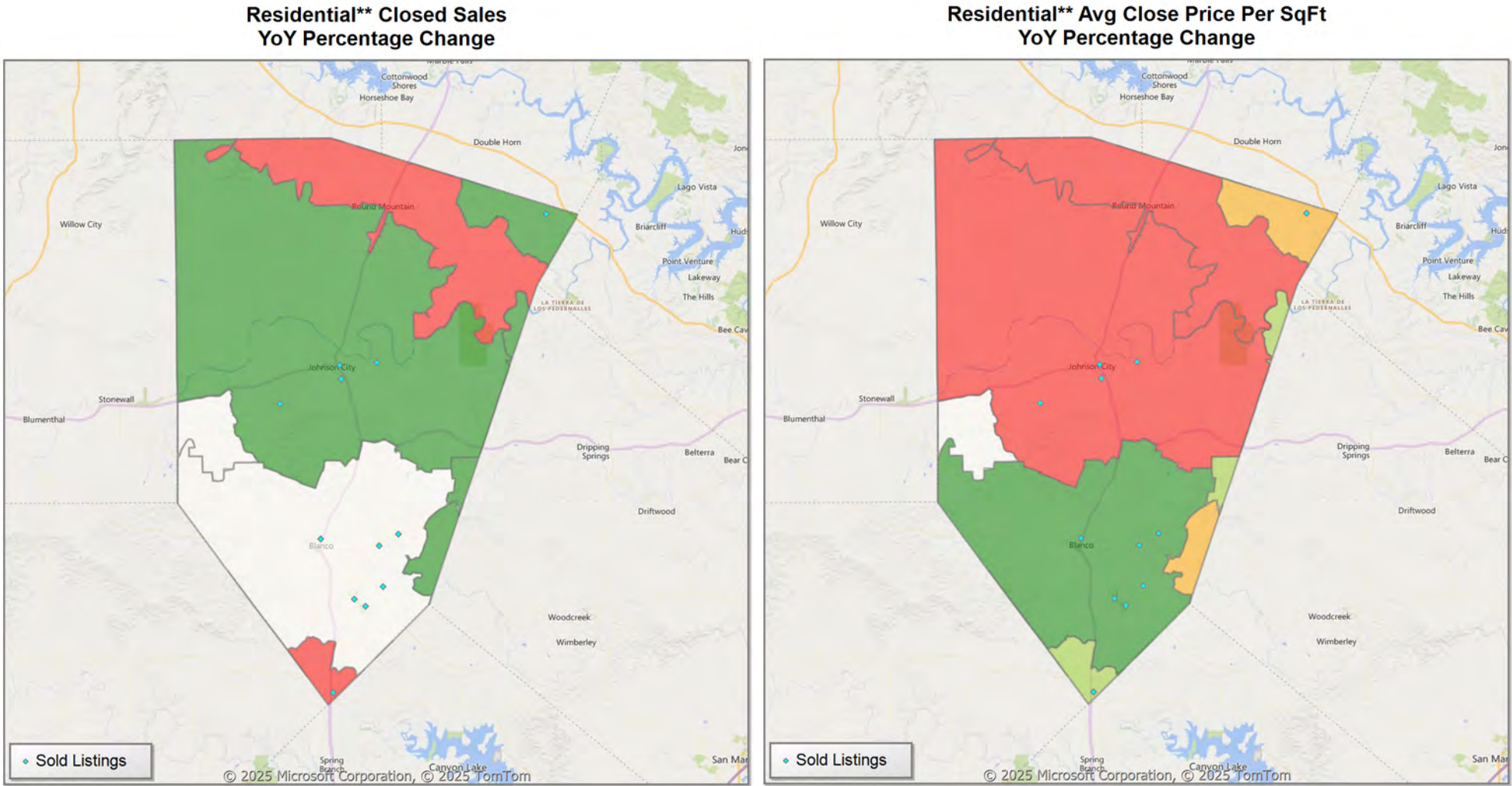


All (New and Existing) Construction



* Closed Sale counts for most recent 3 months are Preliminary.

Comparison By Zip Code* in Blanco County

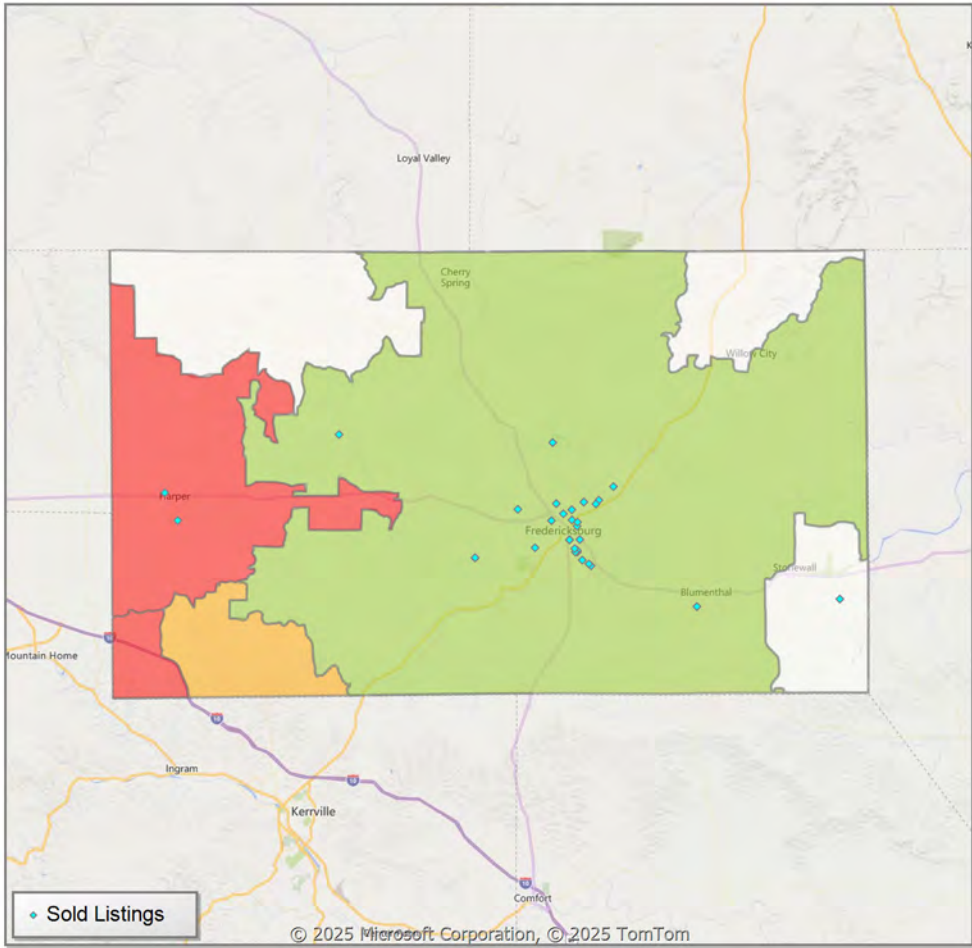


* US Census Zip Code Tabulation Area
** Residential includes Single Family, Condominium and Townhouse.

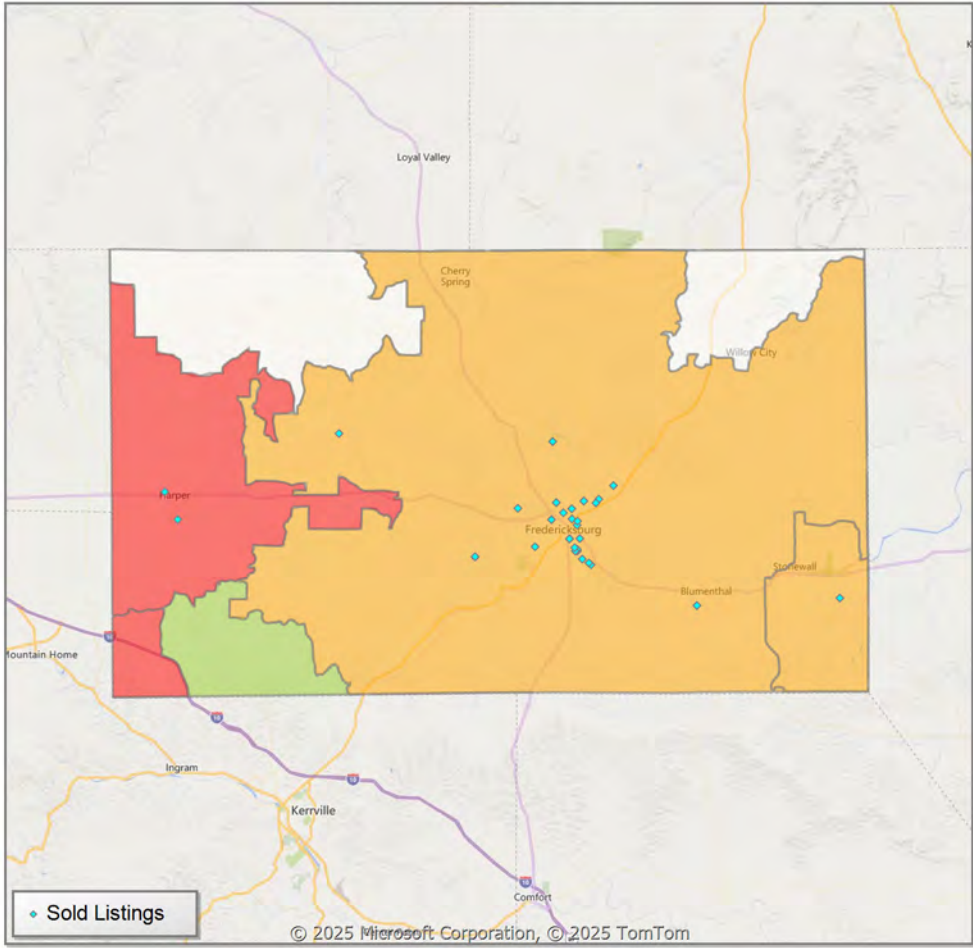


Comparison By Zip Code* in Gillespie County

Residential** Closed Sales
YoY Percentage Change



Residential** Avg Close Price Per SqFt
YoY Percentage Change

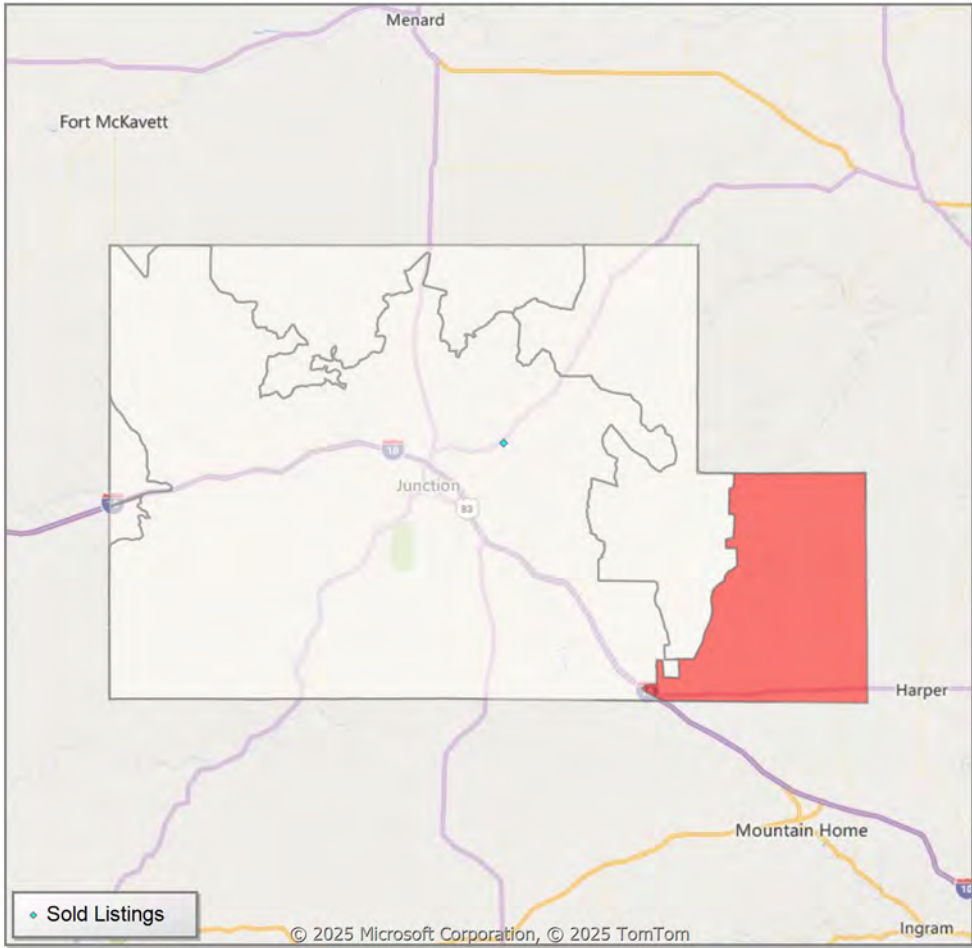


* US Census Zip Code Tabulation Area
** Residential includes Single Family, Condominium and Townhouse.

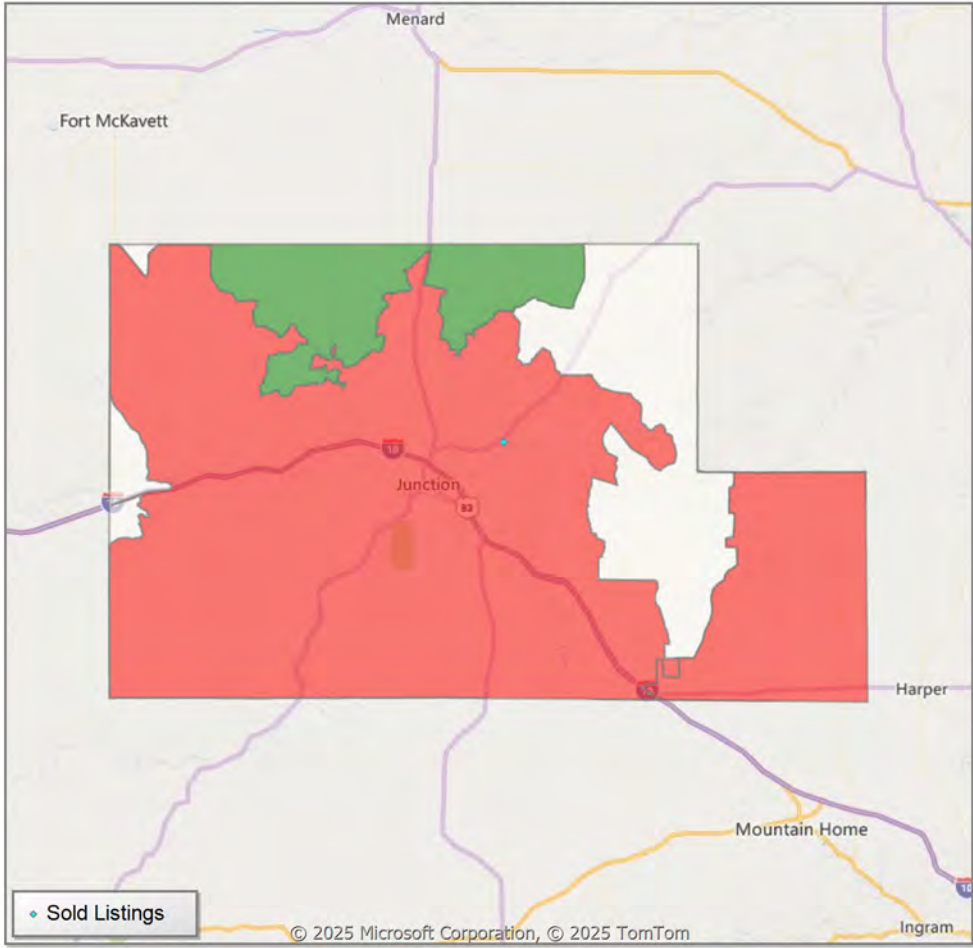


Comparison By Zip Code* in Kimble County

Residential** Closed Sales
YoY Percentage Change



Residential** Avg Close Price Per SqFt
YoY Percentage Change

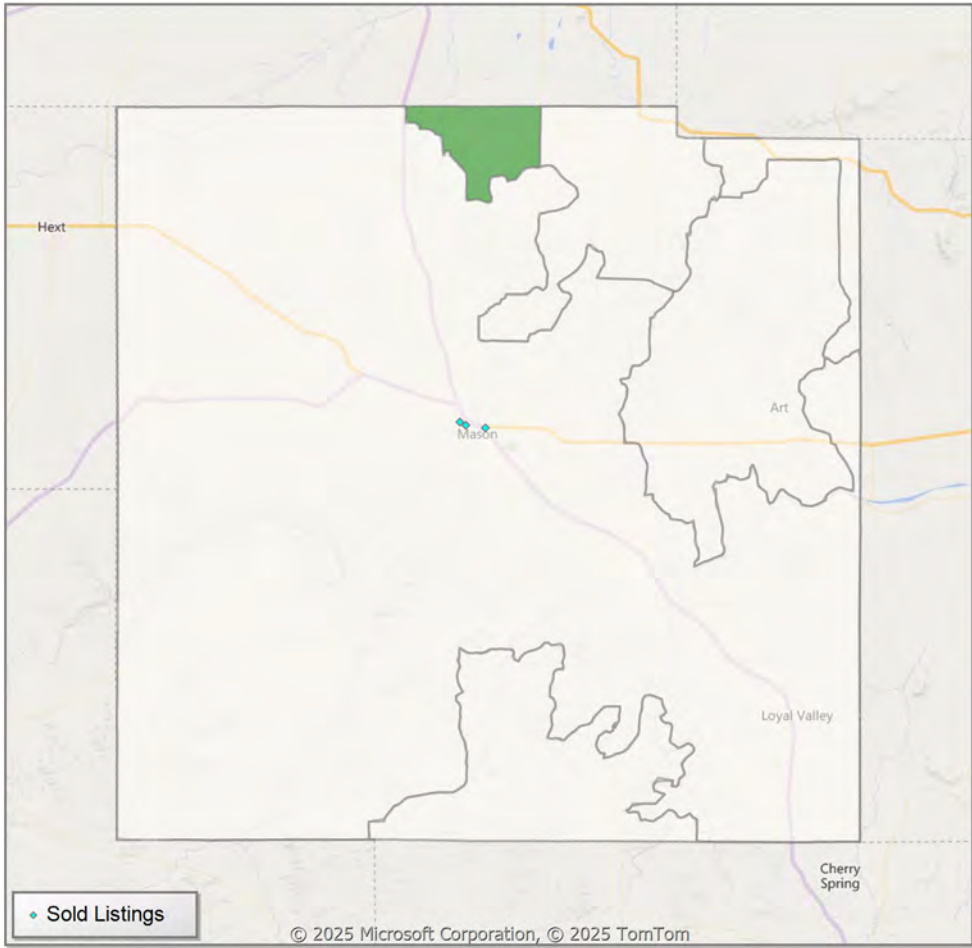


* US Census Zip Code Tabulation Area
** Residential includes Single Family, Condominium and Townhouse.

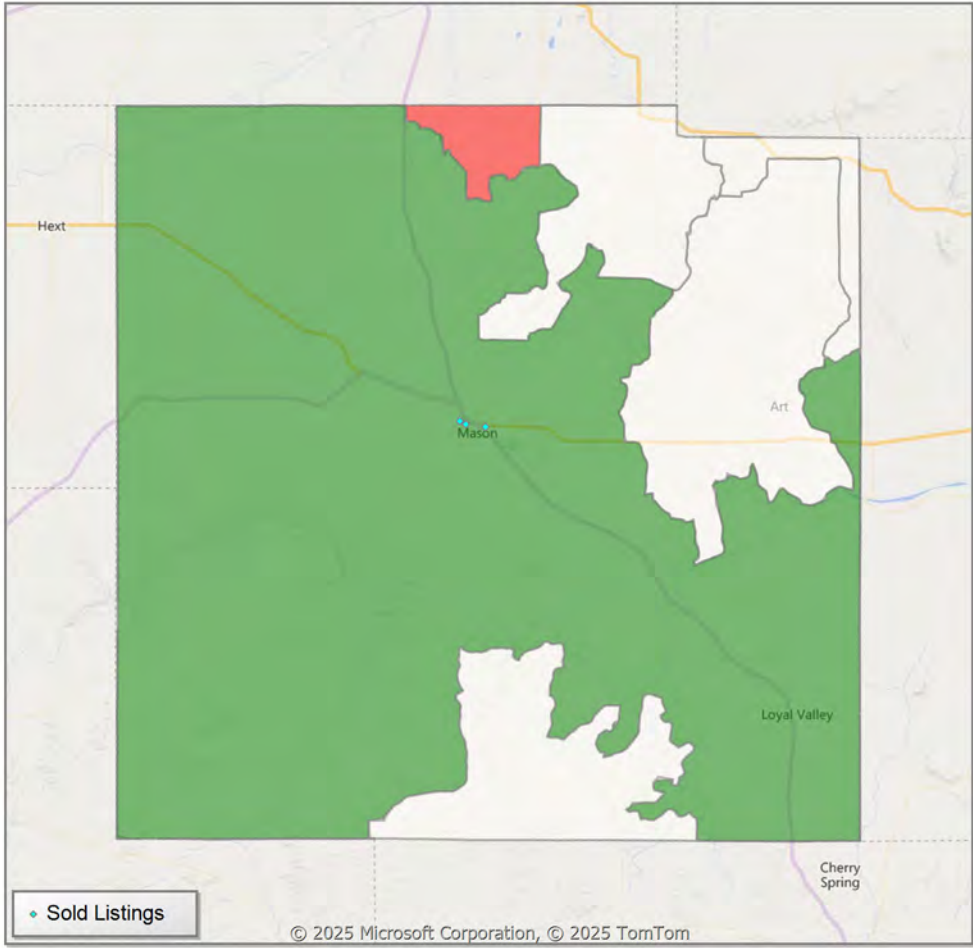


Comparison By Zip Code* in Mason County

Residential** Closed Sales
YoY Percentage Change



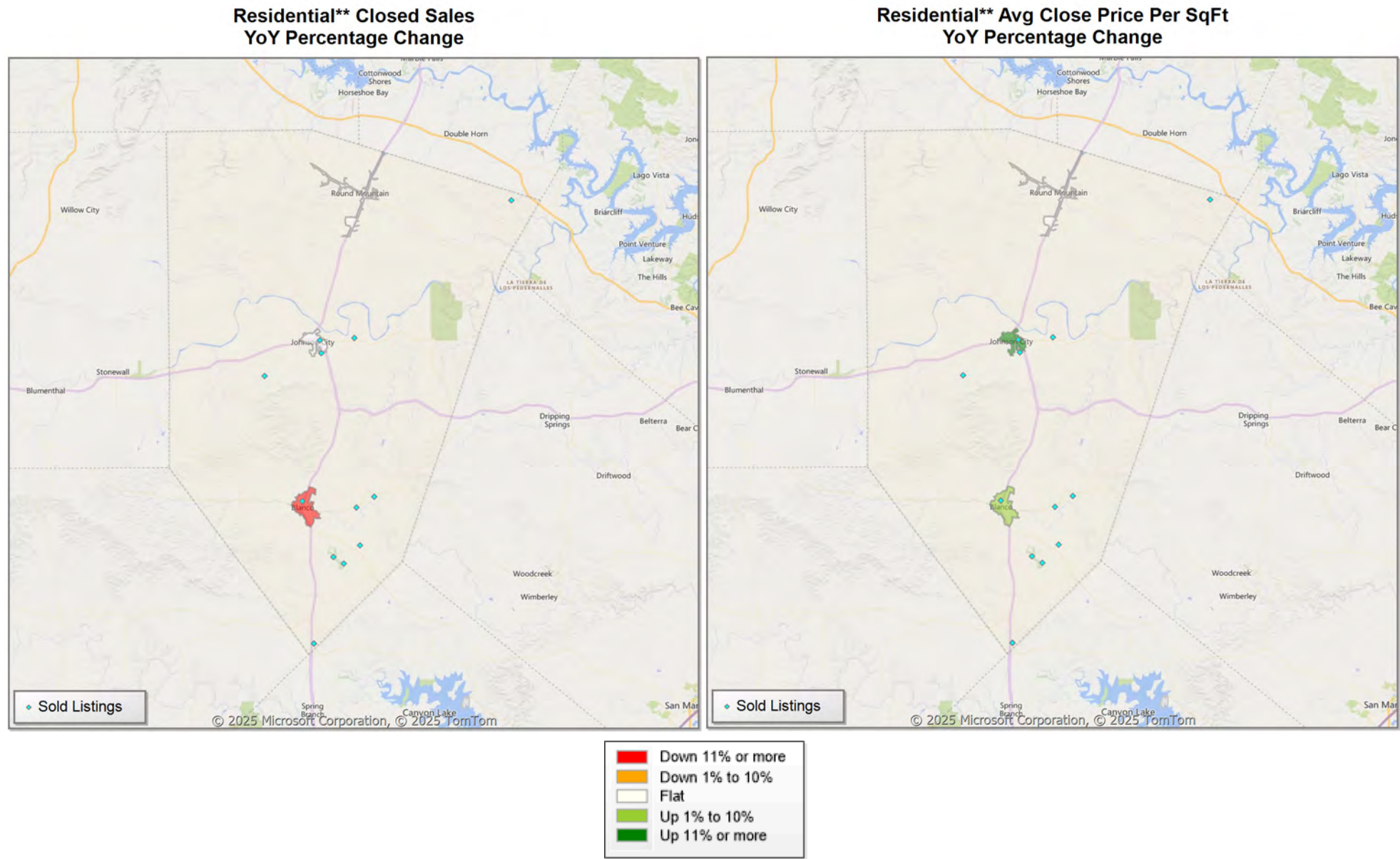
Residential** Avg Close Price Per SqFt
YoY Percentage Change



* US Census Zip Code Tabulation Area
** Residential includes Single Family, Condominium and Townhouse.

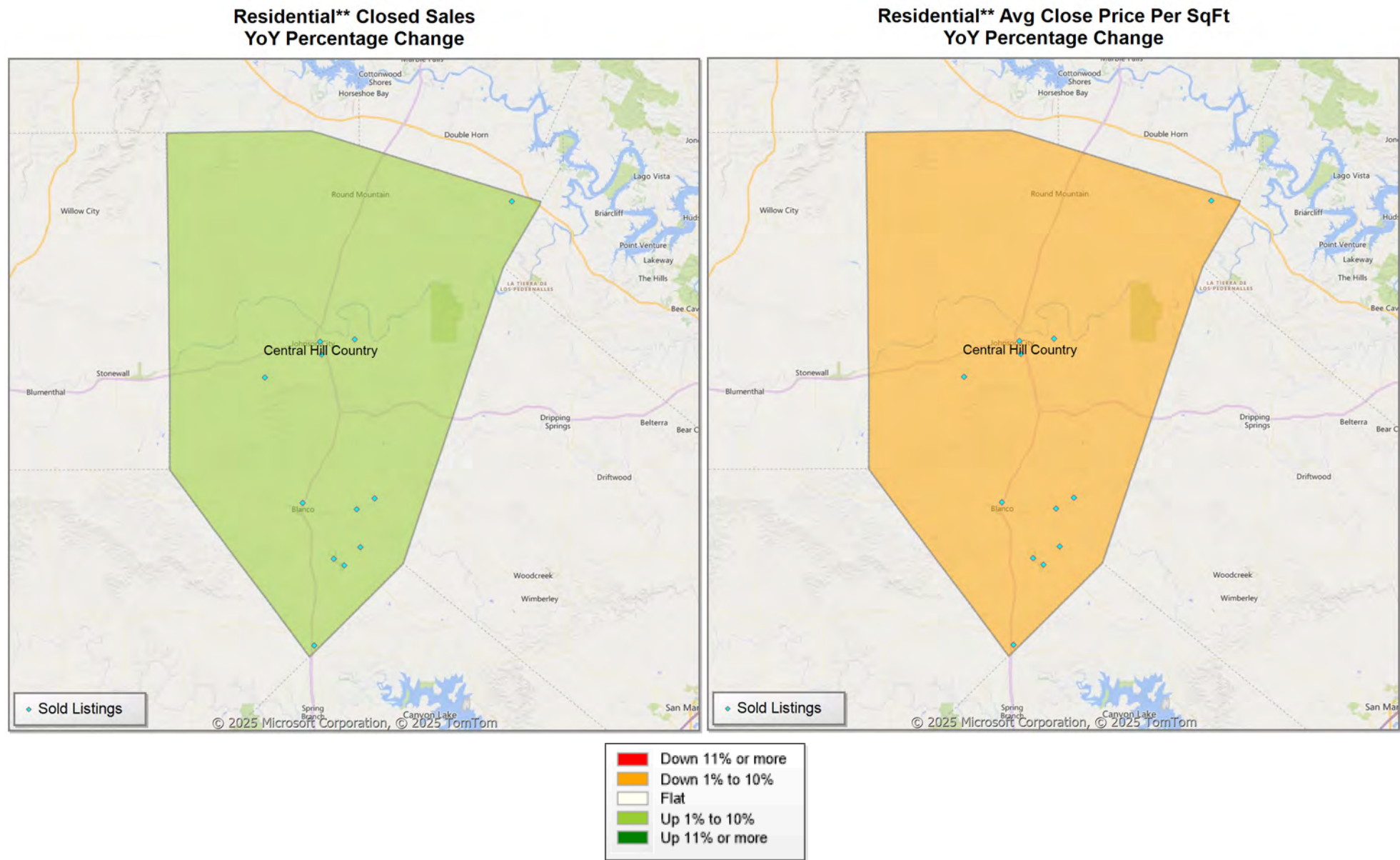


Comparison By Local Market Area* in Blanco County



* Census Place Group
** Residential includes Single Family, Condominium and Townhouse.

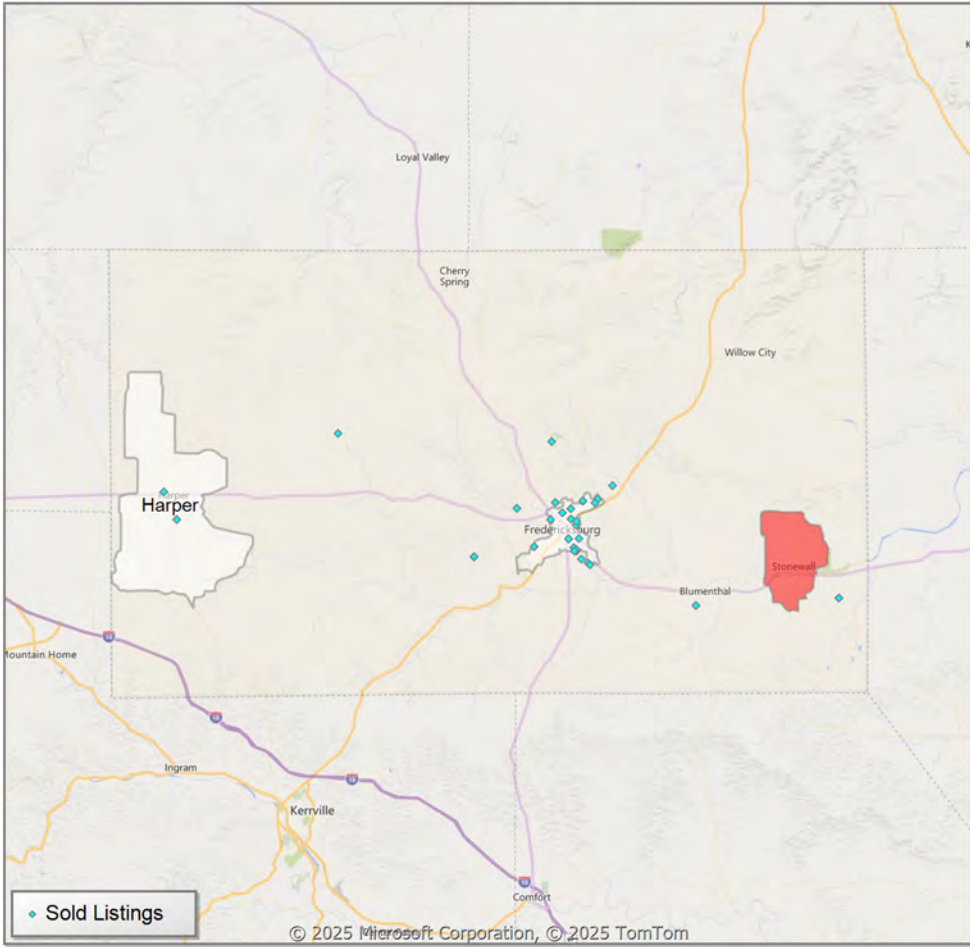
Comparison By Local Market Area* in Blanco County



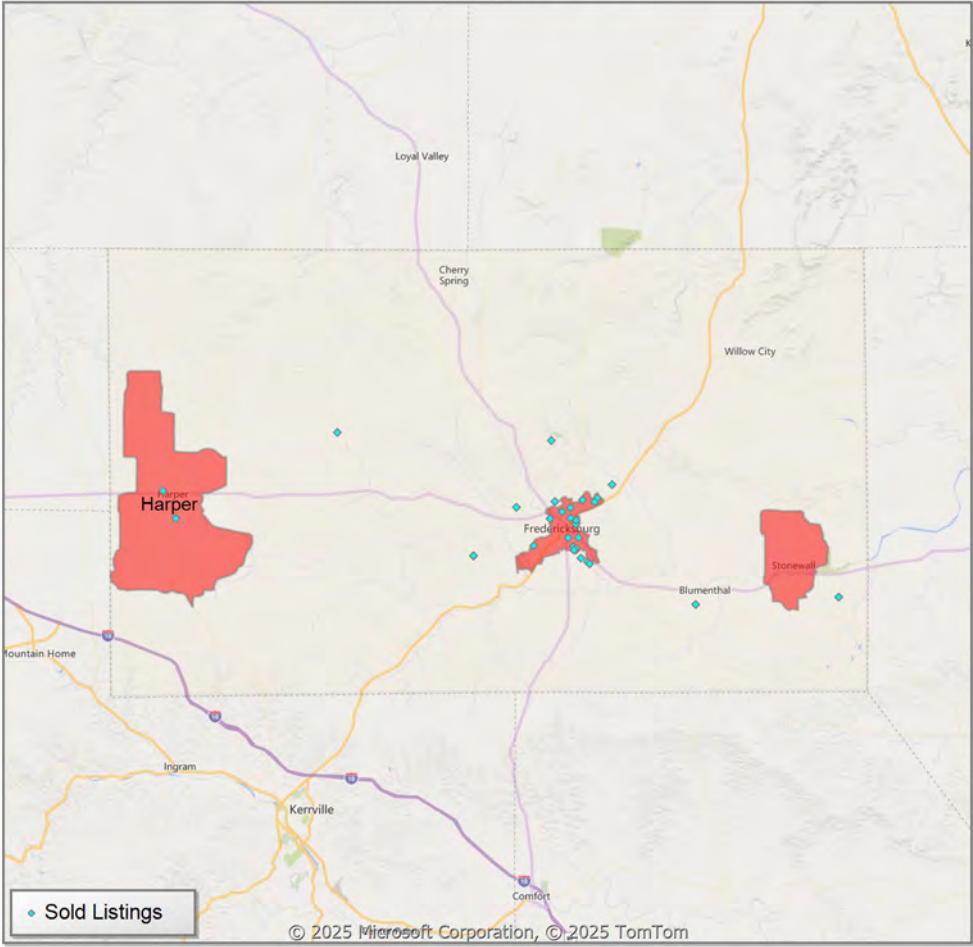
* Custom Defined Market
** Residential includes Single Family, Condominium and Townhouse.

Comparison By Local Market Area* in Gillespie County

Residential** Closed Sales
YoY Percentage Change



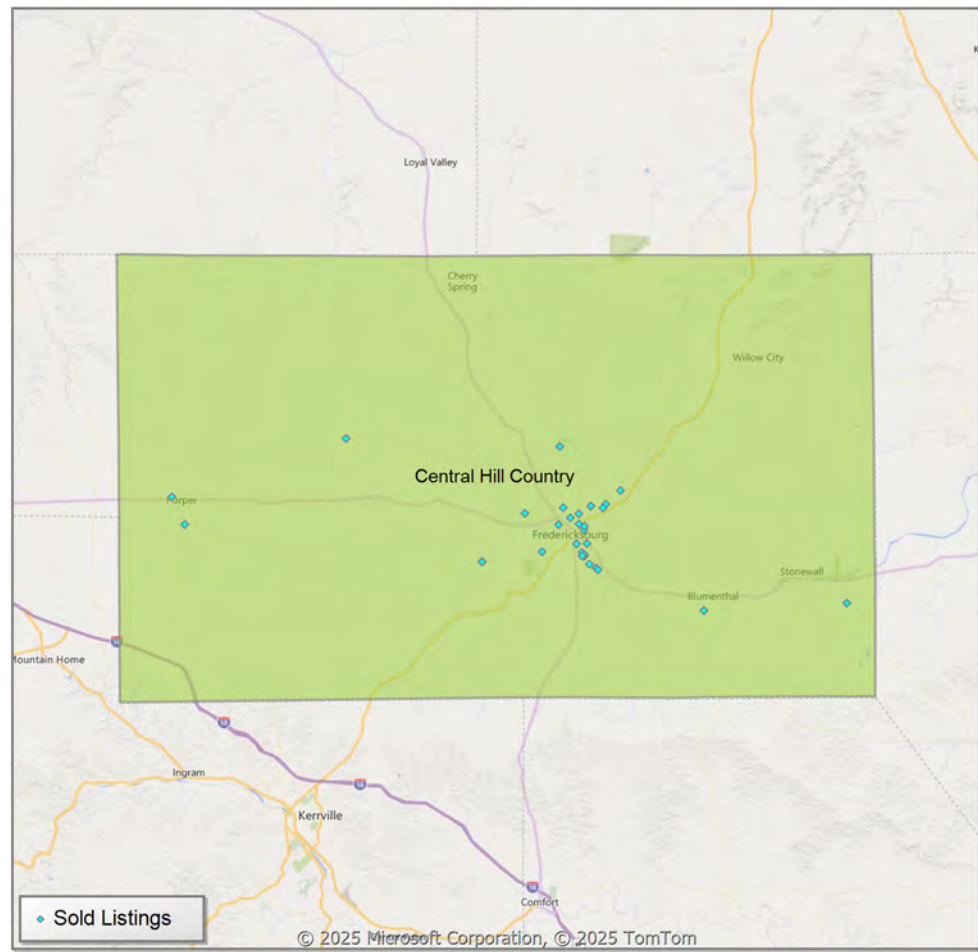
Residential** Avg Close Price Per SqFt
YoY Percentage Change



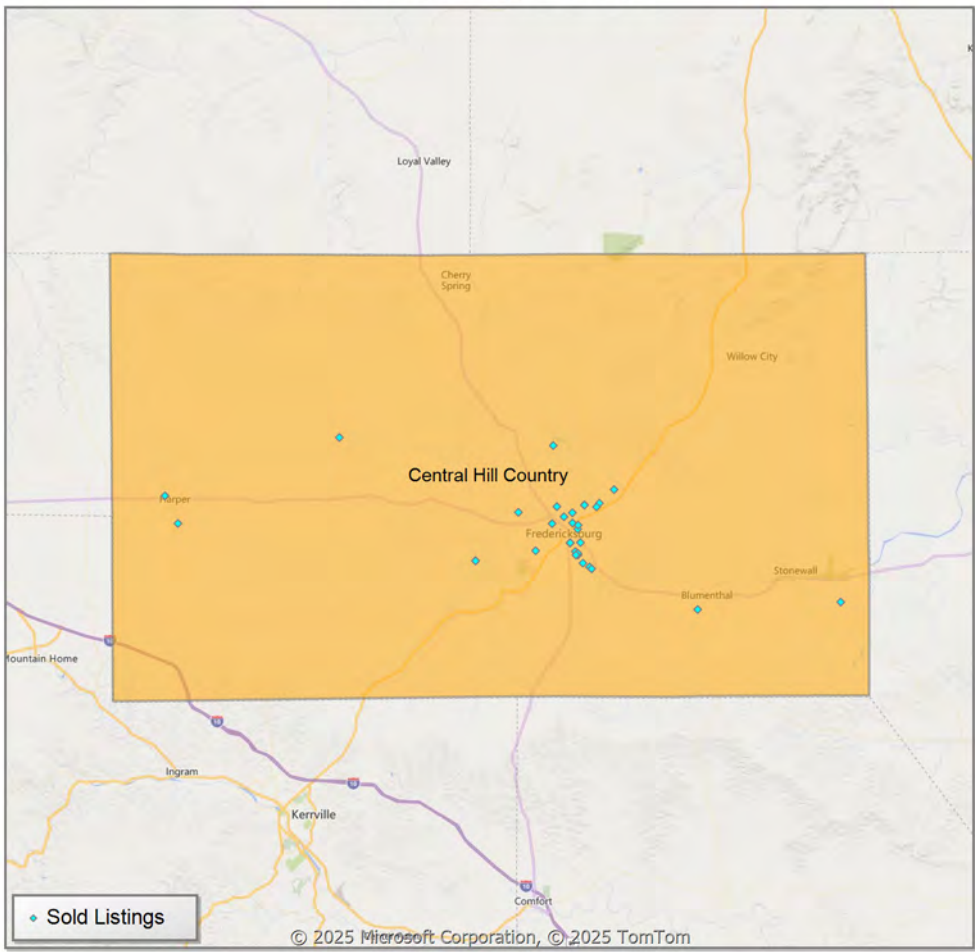
* Census Place Group
** Residential includes Single Family, Condominium and Townhouse.

Comparison By Local Market Area* in Gillespie County

Residential** Closed Sales
YoY Percentage Change



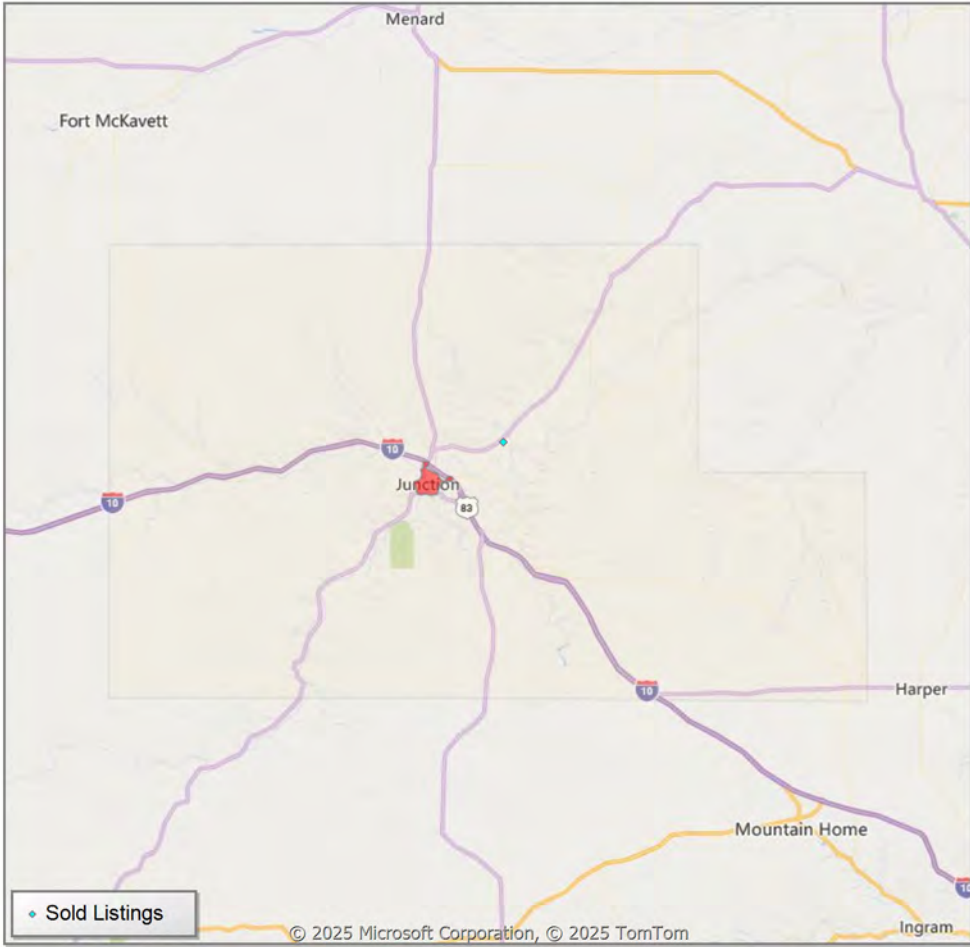
Residential** Avg Close Price Per SqFt
YoY Percentage Change



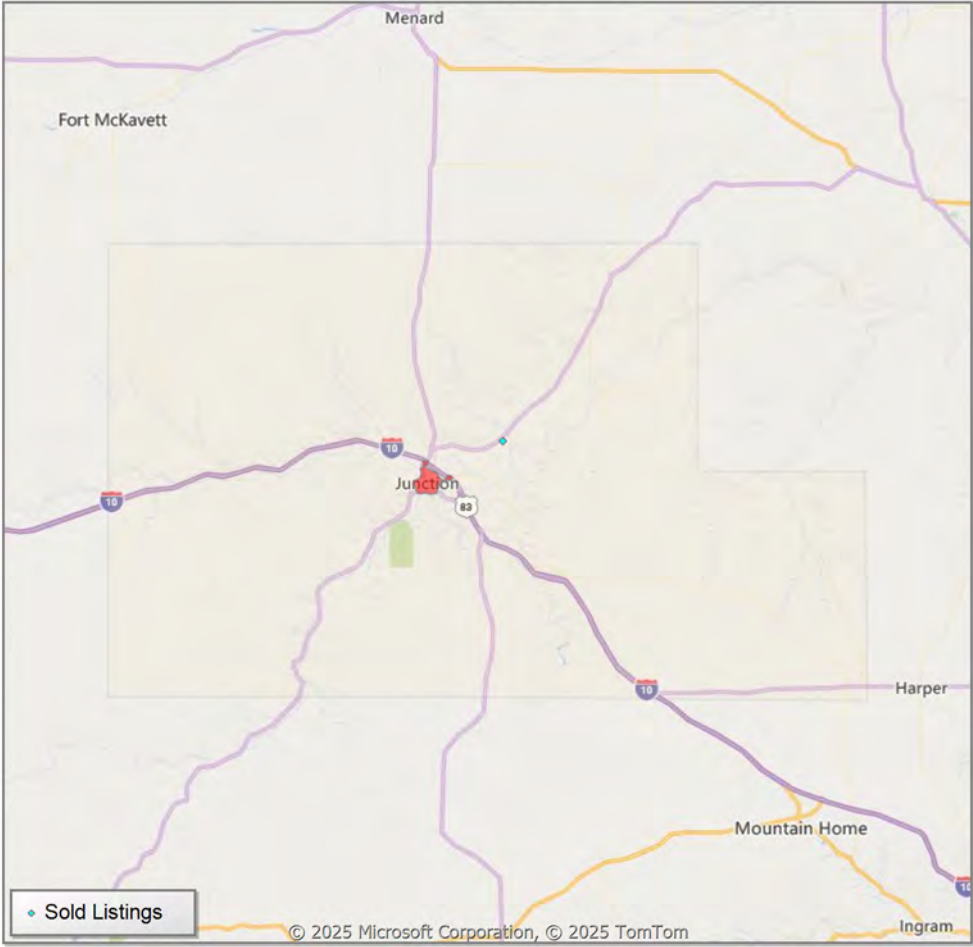
* Custom Defined Market
** Residential includes Single Family, Condominium and Townhouse.

Comparison By Local Market Area* in Kimble County

Residential** Closed Sales
YoY Percentage Change



Residential** Avg Close Price Per SqFt
YoY Percentage Change



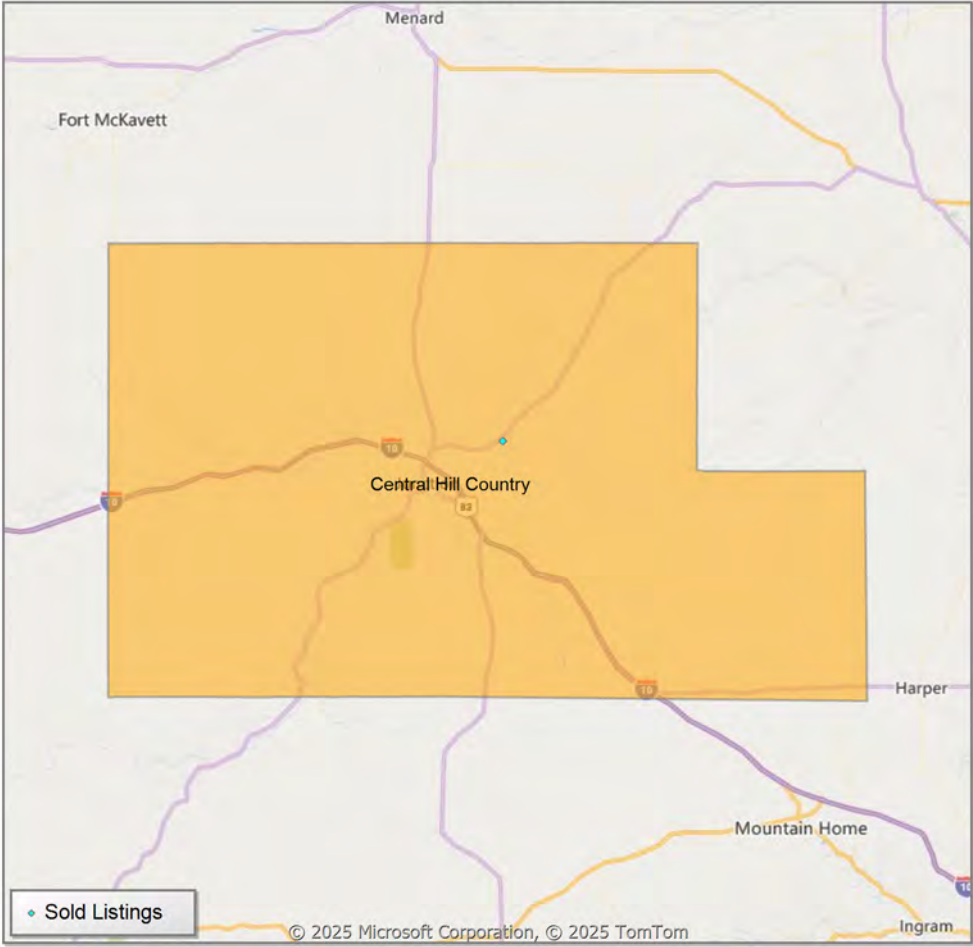
* Census Place Group
** Residential includes Single Family, Condominium and Townhouse.

Comparison By Local Market Area* in Kimble County

Residential** Closed Sales
YoY Percentage Change



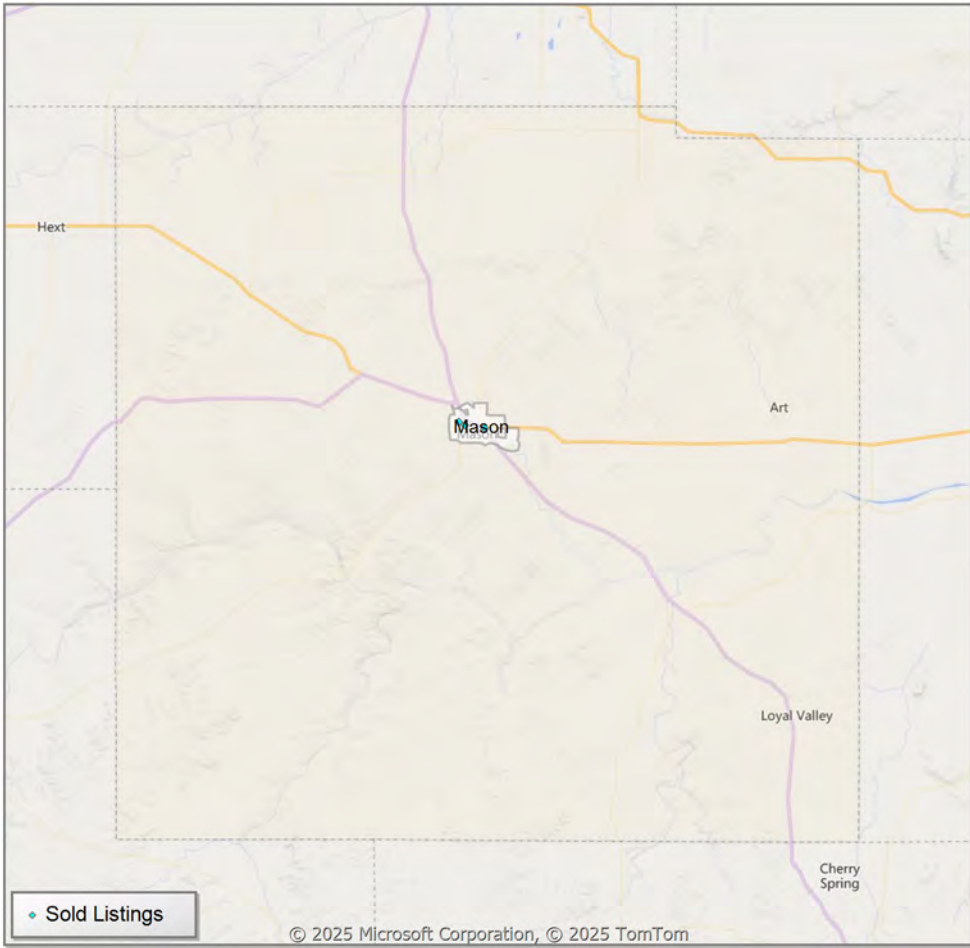
Residential** Avg Close Price Per SqFt
YoY Percentage Change



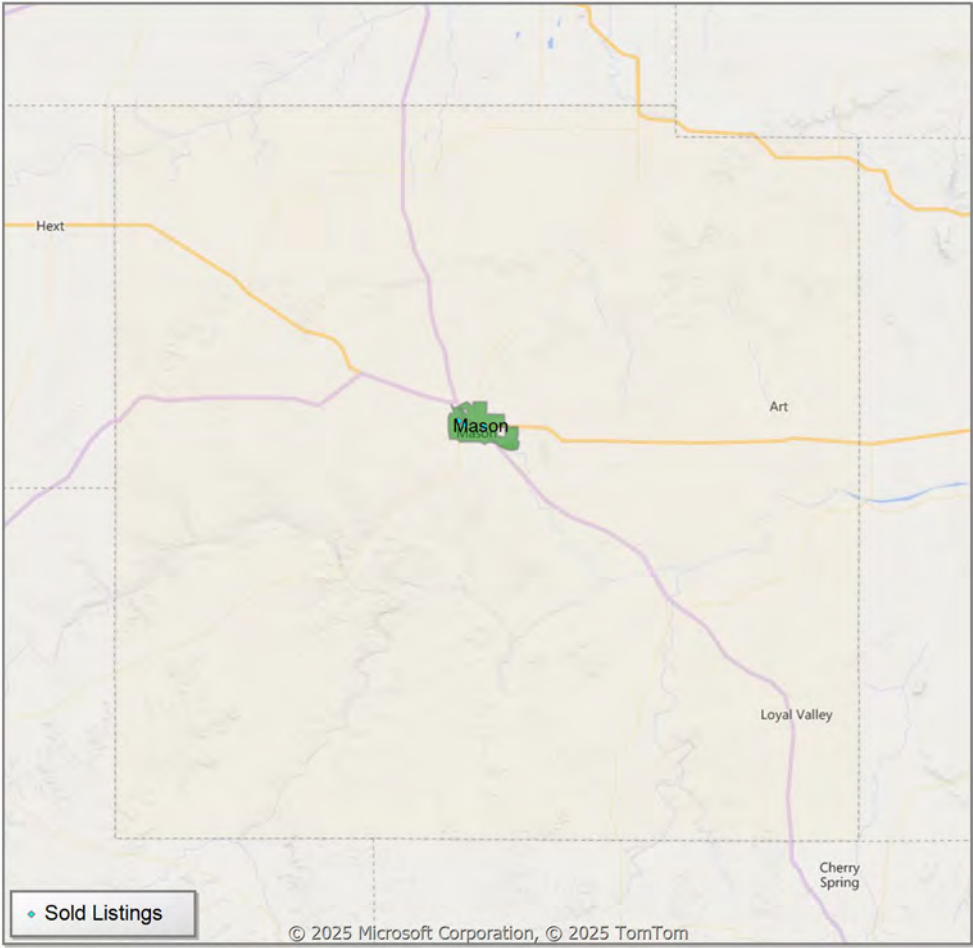
* Custom Defined Market
** Residential includes Single Family, Condominium and Townhouse.

Comparison By Local Market Area* in Mason County

Residential** Closed Sales
YoY Percentage Change

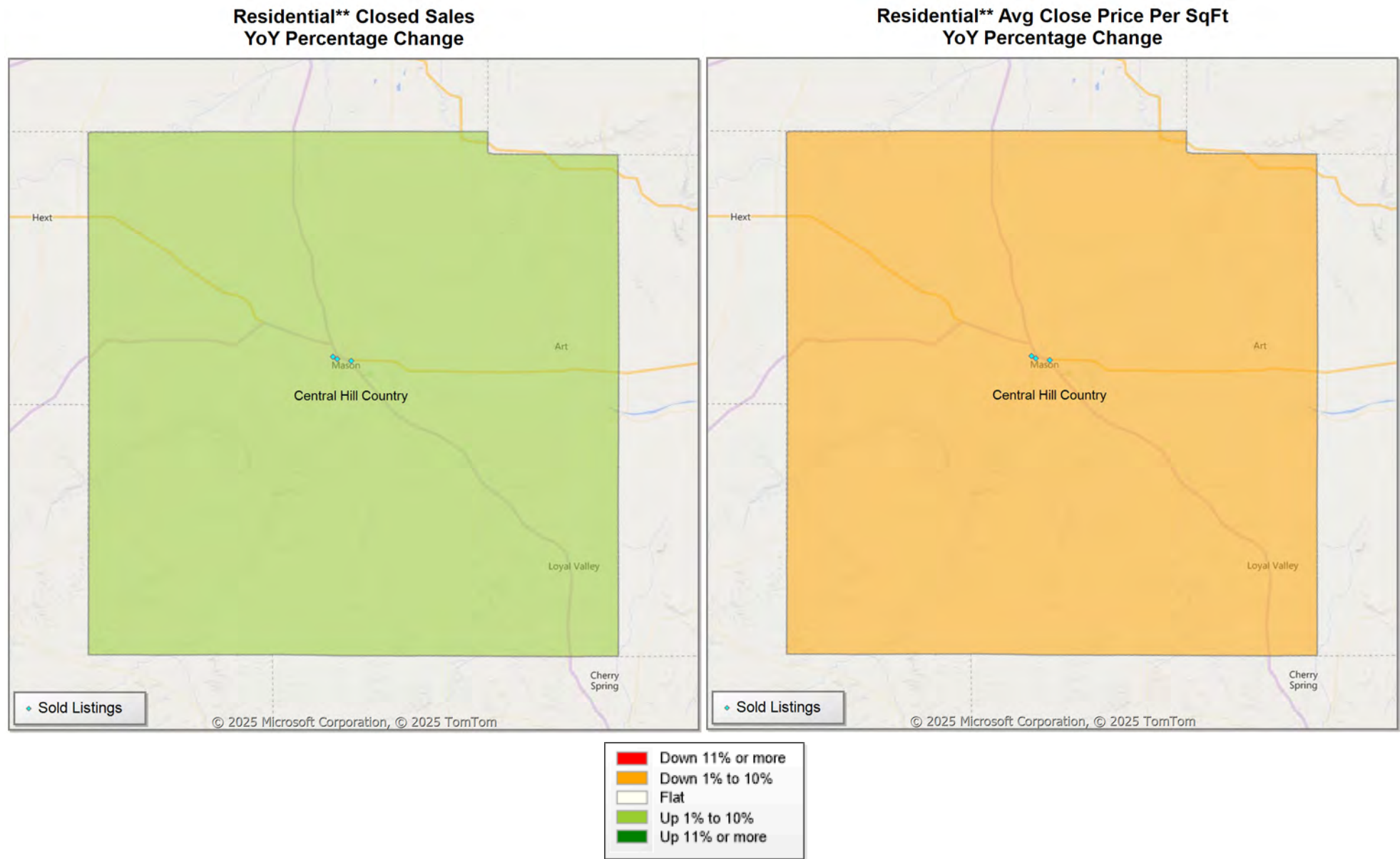


Residential** Avg Close Price Per SqFt
YoY Percentage Change



* Census Place Group
** Residential includes Single Family, Condominium and Townhouse.

Comparison By Local Market Area* in Mason County



* Custom Defined Market
** Residential includes Single Family, Condominium and Townhouse.

Market Analysis By Local Market Area*: Blanco

Property Type	Closed Sales**	YoY%	Dollar Volume	YoY%	Average Price	YoY%	Median Price	YoY%	Price/ Sqft	YoY%	DOM	New Listings	Active Listings	Pending Sales	Months Inventory	Close To OLP
<u>All(New and Existing)</u>																
Residential (SF/COND/TH)	1	-50.0%	\$285,000	-46.1%	\$285,000	7.9%	\$285,000	7.9%	\$238	5.1%	62	1	13	-	8.7	95.3%
YTD:	2	0.0%	\$535,000	1.2%	\$267,500	1.2%	\$267,500	1.2%	\$232	2.6%	114	5	12	2		85.0%
Single Family	1	-50.0%	\$285,000	-46.1%	\$285,000	7.9%	\$285,000	7.9%	\$238	5.1%	62	1	13	-	8.7	95.3%
YTD:	2	0.0%	\$535,000	1.2%	\$267,500	1.2%	\$267,500	1.2%	\$232	2.6%	114	5	12	2		85.0%
Townhouse	-	0.0%	-	0.0%	-	0.0%	-	0.0%	-	0.0%	-	-	-	-	-	0.0%
YTD:	-	0.0%	-	0.0%	-	0.0%	-	0.0%	-	0.0%	-	-	-	-	-	0.0%
Condominium	-	0.0%	-	0.0%	-	0.0%	-	0.0%	-	0.0%	-	-	-	-	-	0.0%
YTD:	-	0.0%	-	0.0%	-	0.0%	-	0.0%	-	0.0%	-	-	-	-	-	0.0%
<u>Existing Home</u>																
Residential (SF/COND/TH)	1	-50.0%	\$285,000	-46.1%	\$285,000	7.9%	\$285,000	7.9%	\$238	5.1%	62	1	11	-	8.3	95.3%
YTD:	2	0.0%	\$535,000	1.2%	\$267,500	1.2%	\$267,500	1.2%	\$232	2.6%	114	3	10	2		85.0%
Single Family	1	-50.0%	\$285,000	-46.1%	\$285,000	7.9%	\$285,000	7.9%	\$238	5.1%	62	1	11	-	8.3	95.3%
YTD:	2	0.0%	\$535,000	1.2%	\$267,500	1.2%	\$267,500	1.2%	\$232	2.6%	114	3	10	2		85.0%
Townhouse	-	0.0%	-	0.0%	-	0.0%	-	0.0%	-	0.0%	-	-	-	-	-	0.0%
YTD:	-	0.0%	-	0.0%	-	0.0%	-	0.0%	-	0.0%	-	-	-	-	-	0.0%
Condominium	-	0.0%	-	0.0%	-	0.0%	-	0.0%	-	0.0%	-	-	-	-	-	0.0%
YTD:	-	0.0%	-	0.0%	-	0.0%	-	0.0%	-	0.0%	-	-	-	-	-	0.0%
<u>New Construction</u>																
Residential (SF/COND/TH)	-	0.0%	-	0.0%	-	0.0%	-	0.0%	-	0.0%	-	-	2	-	12.0	0.0%
YTD:	-	0.0%	-	0.0%	-	0.0%	-	0.0%	-	0.0%	-	2	2	-		0.0%
Single Family	-	0.0%	-	0.0%	-	0.0%	-	0.0%	-	0.0%	-	-	2	-	12.0	0.0%
YTD:	-	0.0%	-	0.0%	-	0.0%	-	0.0%	-	0.0%	-	2	2	-		0.0%
Townhouse	-	0.0%	-	0.0%	-	0.0%	-	0.0%	-	0.0%	-	-	-	-	-	0.0%
YTD:	-	0.0%	-	0.0%	-	0.0%	-	0.0%	-	0.0%	-	-	-	-	-	0.0%
Condominium	-	0.0%	-	0.0%	-	0.0%	-	0.0%	-	0.0%	-	-	-	-	-	0.0%
YTD:	-	0.0%	-	0.0%	-	0.0%	-	0.0%	-	0.0%	-	-	-	-	-	0.0%

* Local Market Area Code: 91; Type: Census Place Group

** Closed Sale counts for most recent 3 months are Preliminary.

Market Analysis By Local Market Area*: Central Hill Country

Property Type	Closed Sales**	YoY%	Dollar Volume	YoY%	Average Price	YoY%	Median Price	YoY%	Price/ Sqft	YoY%	DOM	New Listings	Active Listings	Pending Sales	Months Inventory	Close To OLP
<u>All(New and Existing)</u>																
Residential (SF/COND/TH)	55	3.8%	\$33,112,869	4.6%	\$602,052	0.8%	\$431,000	-8.3%	\$300	-8.0%	99	158	614	57	11.4	92.9%
YTD:	131	7.4%	\$78,367,257	8.0%	\$598,223	0.6%	\$442,500	-8.1%	\$310	-16.7%	123	413	561	132		91.3%
Single Family	55	3.8%	\$33,112,869	4.6%	\$602,052	0.8%	\$431,000	-8.3%	\$300	-8.0%	99	155	604	57	11.2	92.9%
YTD:	130	6.6%	\$78,024,026	7.6%	\$600,185	1.0%	\$443,245	-8.0%	\$309	-17.0%	123	409	551	132		91.3%
Townhouse	-	0.0%	-	0.0%	-	0.0%	-	0.0%	-	0.0%	-	-	-	-	-	0.0%
YTD:	-	0.0%	-	0.0%	-	0.0%	-	0.0%	-	0.0%	-	-	-	-	-	0.0%
Condominium	-	0.0%	-	0.0%	-	0.0%	-	0.0%	-	0.0%	-	3	10	-	120.0	0.0%
YTD:	1	100.0%	\$355,000	100.0%	\$355,000	100.0%	\$355,000	100.0%	\$443	100.0%	80	4	9	-		94.7%
<u>Existing Home</u>																
Residential (SF/COND/TH)	44	-4.4%	\$29,032,490	3.1%	\$659,829	7.8%	\$454,100	-4.0%	\$316	-6.5%	112	134	525	44	13.2	91.6%
YTD:	109	3.8%	\$70,122,032	9.4%	\$643,321	5.4%	\$465,600	-4.1%	\$329	-15.5%	134	347	477	101		90.2%
Single Family	44	-4.4%	\$29,032,490	3.1%	\$659,829	7.8%	\$454,100	-4.0%	\$316	-6.5%	112	131	516	44	13.0	91.6%
YTD:	108	2.9%	\$69,781,028	8.9%	\$646,121	5.9%	\$468,000	-3.6%	\$328	-15.8%	134	343	469	101		90.1%
Townhouse	-	0.0%	-	0.0%	-	0.0%	-	0.0%	-	0.0%	-	-	-	-	-	0.0%
YTD:	-	0.0%	-	0.0%	-	0.0%	-	0.0%	-	0.0%	-	-	-	-	-	0.0%
Condominium	-	0.0%	-	0.0%	-	0.0%	-	0.0%	-	0.0%	-	3	9	-	108.0	0.0%
YTD:	1	100.0%	\$355,000	100.0%	\$355,000	100.0%	\$355,000	100.0%	\$443	100.0%	80	4	8	-		94.7%
<u>New Construction</u>																
Residential (SF/COND/TH)	11	57.1%	\$4,080,379	17.1%	\$370,944	-25.5%	\$316,999	3.6%	\$237	-5.4%	43	24	89	13	6.3	97.6%
YTD:	22	29.4%	\$8,247,373	-2.5%	\$374,881	-24.6%	\$326,501	-32.0%	\$213	-15.9%	68	66	83	31		96.4%
Single Family	11	57.1%	\$4,080,379	17.1%	\$370,944	-25.5%	\$316,999	3.6%	\$237	-5.4%	43	24	88	13	6.2	97.6%
YTD:	22	29.4%	\$8,247,373	-2.5%	\$374,881	-24.6%	\$326,501	-32.0%	\$213	-15.9%	68	66	81	31		96.4%
Townhouse	-	0.0%	-	0.0%	-	0.0%	-	0.0%	-	0.0%	-	-	-	-	-	0.0%
YTD:	-	0.0%	-	0.0%	-	0.0%	-	0.0%	-	0.0%	-	-	-	-	-	0.0%
Condominium	-	0.0%	-	0.0%	-	0.0%	-	0.0%	-	0.0%	-	-	1	-	-	0.0%
YTD:	-	0.0%	-	0.0%	-	0.0%	-	0.0%	-	0.0%	-	-	1	-	-	0.0%

* Local Market Area Code: CHC; Type: Custom Defined Market
** Closed Sale counts for most recent 3 months are Preliminary.

Market Analysis By Local Market Area*: Fredericksburg

Property Type	Closed Sales**	YoY%	Dollar Volume	YoY%	Average Price	YoY%	Median Price	YoY%	Price/ Sqft	YoY%	DOM	New Listings	Active Listings	Pending Sales	Months Inventory	Close To OLP
<u>All(New and Existing)</u>																
Residential (SF/COND/TH)	20	0.0%	\$8,208,954	-9.8%	\$410,448	-9.8%	\$378,950	-17.4%	\$277	-18.6%	87	62	194	25	7.8	93.7%
YTD:	55	5.8%	\$26,398,213	-6.1%	\$479,968	-11.2%	\$425,000	-12.0%	\$304	-14.9%	106	149	177	52		93.2%
Single Family	20	0.0%	\$8,208,954	-9.8%	\$410,448	-9.8%	\$378,950	-17.4%	\$277	-18.6%	87	61	192	25	7.7	93.7%
YTD:	54	3.9%	\$26,048,019	-7.4%	\$482,371	-10.8%	\$425,000	-12.0%	\$301	-15.6%	106	148	174	52		93.2%
Townhouse	-	0.0%	-	0.0%	-	0.0%	-	0.0%	-	0.0%	-	-	-	-	-	0.0%
YTD:	-	0.0%	-	0.0%	-	0.0%	-	0.0%	-	0.0%	-	-	-	-	-	0.0%
Condominium	-	0.0%	-	0.0%	-	0.0%	-	0.0%	-	0.0%	-	1	2	-	24.0	0.0%
YTD:	1	100.0%	\$355,000	100.0%	\$355,000	100.0%	\$355,000	100.0%	\$443	100.0%	80	1	2	-		94.7%
<u>Existing Home</u>																
Residential (SF/COND/TH)	15	0.0%	\$6,614,918	-9.5%	\$440,995	-9.5%	\$396,462	-15.9%	\$299	-20.6%	97	59	182	18	11.9	93.1%
YTD:	40	-11.1%	\$20,894,445	-18.0%	\$522,361	-7.7%	\$425,000	-15.0%	\$344	-8.6%	115	135	162	35		92.3%
Single Family	15	0.0%	\$6,614,918	-9.5%	\$440,995	-9.5%	\$396,462	-15.9%	\$299	-20.6%	97	58	180	18	11.9	93.1%
YTD:	39	-13.3%	\$20,543,849	-19.4%	\$526,765	-6.9%	\$425,500	-14.9%	\$341	-9.3%	116	134	160	35		92.2%
Townhouse	-	0.0%	-	0.0%	-	0.0%	-	0.0%	-	0.0%	-	-	-	-	-	0.0%
YTD:	-	0.0%	-	0.0%	-	0.0%	-	0.0%	-	0.0%	-	-	-	-	-	0.0%
Condominium	-	0.0%	-	0.0%	-	0.0%	-	0.0%	-	0.0%	-	1	2	-	24.0	0.0%
YTD:	1	100.0%	\$355,000	100.0%	\$355,000	100.0%	\$355,000	100.0%	\$443	100.0%	80	1	2	-		94.7%
<u>New Construction</u>																
Residential (SF/COND/TH)	4	-20.0%	\$1,214,136	-32.1%	\$303,534	-15.1%	\$303,069	-1.0%	\$197	-13.6%	49	3	12	7	1.2	95.9%
YTD:	14	100.0%	\$5,066,194	91.7%	\$361,871	-4.2%	\$323,250	-5.5%	\$193	-17.5%	80	14	15	17		95.5%
Single Family	4	-20.0%	\$1,214,136	-32.1%	\$303,534	-15.1%	\$303,069	-1.0%	\$197	-13.6%	49	3	12	7	1.2	95.9%
YTD:	14	100.0%	\$5,066,194	91.7%	\$361,871	-4.2%	\$323,250	-5.5%	\$193	-17.5%	80	14	14	17		95.5%
Townhouse	-	0.0%	-	0.0%	-	0.0%	-	0.0%	-	0.0%	-	-	-	-	-	0.0%
YTD:	-	0.0%	-	0.0%	-	0.0%	-	0.0%	-	0.0%	-	-	-	-	-	0.0%
Condominium	-	0.0%	-	0.0%	-	0.0%	-	0.0%	-	0.0%	-	-	-	-	-	0.0%
YTD:	-	0.0%	-	0.0%	-	0.0%	-	0.0%	-	0.0%	-	-	1	-		0.0%

* Local Market Area Code: 335; Type: Census Place Group
** Closed Sale counts for most recent 3 months are Preliminary.

Market Analysis By Local Market Area*: Harper

Property Type	Closed Sales**	YoY%	Dollar Volume	YoY%	Average Price	YoY%	Median Price	YoY%	Price/ Sqft	YoY%	DOM	New Listings	Active Listings	Pending Sales	Months Inventory	Close To OLP
<u>All(New and Existing)</u>																
Residential (SF/COND/TH)	2	0.0%	\$689,000	-24.9%	\$344,500	-24.9%	\$344,500	-24.9%	\$198	-21.1%	62	3	20	1	12.0	100.0%
YTD:	3	0.0%	\$804,000	-35.3%	\$268,000	-35.3%	\$339,000	4.3%	\$167	-25.2%	66	17	18	3		100.0%
Single Family	2	0.0%	\$689,000	-24.9%	\$344,500	-24.9%	\$344,500	-24.9%	\$198	-21.1%	62	3	20	1	12.0	100.0%
YTD:	3	0.0%	\$804,000	-35.3%	\$268,000	-35.3%	\$339,000	4.3%	\$167	-25.2%	66	17	18	3		100.0%
Townhouse	-	0.0%	-	0.0%	-	0.0%	-	0.0%	-	0.0%	-	-	-	-	-	0.0%
YTD:	-	0.0%	-	0.0%	-	0.0%	-	0.0%	-	0.0%	-	-	-	-	-	0.0%
Condominium	-	0.0%	-	0.0%	-	0.0%	-	0.0%	-	0.0%	-	-	-	-	-	0.0%
YTD:	-	0.0%	-	0.0%	-	0.0%	-	0.0%	-	0.0%	-	-	-	-	-	0.0%
<u>Existing Home</u>																
Residential (SF/COND/TH)	2	0.0%	\$689,000	-24.9%	\$344,500	-24.9%	\$344,500	-24.9%	\$198	-21.1%	62	3	18	1	10.8	100.0%
YTD:	3	0.0%	\$804,000	-35.3%	\$268,000	-35.3%	\$339,000	4.3%	\$167	-25.2%	66	16	16	3		100.0%
Single Family	2	0.0%	\$689,000	-24.9%	\$344,500	-24.9%	\$344,500	-24.9%	\$198	-21.1%	62	3	18	1	10.8	100.0%
YTD:	3	0.0%	\$804,000	-35.3%	\$268,000	-35.3%	\$339,000	4.3%	\$167	-25.2%	66	16	16	3		100.0%
Townhouse	-	0.0%	-	0.0%	-	0.0%	-	0.0%	-	0.0%	-	-	-	-	-	0.0%
YTD:	-	0.0%	-	0.0%	-	0.0%	-	0.0%	-	0.0%	-	-	-	-	-	0.0%
Condominium	-	0.0%	-	0.0%	-	0.0%	-	0.0%	-	0.0%	-	-	-	-	-	0.0%
YTD:	-	0.0%	-	0.0%	-	0.0%	-	0.0%	-	0.0%	-	-	-	-	-	0.0%
<u>New Construction</u>																
Residential (SF/COND/TH)	-	0.0%	-	0.0%	-	0.0%	-	0.0%	-	0.0%	-	-	2	-	-	0.0%
YTD:	-	0.0%	-	0.0%	-	0.0%	-	0.0%	-	0.0%	-	1	2	-		0.0%
Single Family	-	0.0%	-	0.0%	-	0.0%	-	0.0%	-	0.0%	-	-	2	-	-	0.0%
YTD:	-	0.0%	-	0.0%	-	0.0%	-	0.0%	-	0.0%	-	1	2	-		0.0%
Townhouse	-	0.0%	-	0.0%	-	0.0%	-	0.0%	-	0.0%	-	-	-	-	-	0.0%
YTD:	-	0.0%	-	0.0%	-	0.0%	-	0.0%	-	0.0%	-	-	-	-	-	0.0%
Condominium	-	0.0%	-	0.0%	-	0.0%	-	0.0%	-	0.0%	-	-	-	-	-	0.0%
YTD:	-	0.0%	-	0.0%	-	0.0%	-	0.0%	-	0.0%	-	-	-	-	-	0.0%

* Local Market Area Code: 404; Type: Census Place Group
** Closed Sale counts for most recent 3 months are Preliminary.

Market Analysis By Local Market Area*: Johnson City

Property Type	Closed Sales**	YoY%	Dollar Volume	YoY%	Average Price	YoY%	Median Price	YoY%	Price/ Sqft	YoY%	DOM	New Listings	Active Listings	Pending Sales	Months Inventory	Close To OLP
<u>All(New and Existing)</u>																
Residential (SF/COND/TH)	1	0.0%	\$360,000	4.7%	\$360,000	4.7%	\$360,000	4.7%	\$276	26.5%	97	7	20	1	11.4	95.0%
YTD:	6	20.0%	\$1,997,872	2.6%	\$332,979	-14.5%	\$322,500	-11.2%	\$253	-1.1%	82	9	18	6		92.5%
Single Family	1	0.0%	\$360,000	4.7%	\$360,000	4.7%	\$360,000	4.7%	\$276	26.5%	97	7	20	1	11.4	95.0%
YTD:	6	20.0%	\$1,997,872	2.6%	\$332,979	-14.5%	\$322,500	-11.2%	\$253	-1.1%	82	9	18	6		92.5%
Townhouse	-	0.0%	-	0.0%	-	0.0%	-	0.0%	-	0.0%	-	-	-	-	-	0.0%
YTD:	-	0.0%	-	0.0%	-	0.0%	-	0.0%	-	0.0%	-	-	-	-	-	0.0%
Condominium	-	0.0%	-	0.0%	-	0.0%	-	0.0%	-	0.0%	-	-	-	-	-	0.0%
YTD:	-	0.0%	-	0.0%	-	0.0%	-	0.0%	-	0.0%	-	-	-	-	-	0.0%
<u>Existing Home</u>																
Residential (SF/COND/TH)	1	0.0%	\$360,000	4.7%	\$360,000	4.7%	\$360,000	4.7%	\$276	26.5%	97	6	19	1	10.9	95.0%
YTD:	6	20.0%	\$1,997,872	2.6%	\$332,979	-14.5%	\$322,500	-11.2%	\$253	-1.1%	82	8	17	6		92.5%
Single Family	1	0.0%	\$360,000	4.7%	\$360,000	4.7%	\$360,000	4.7%	\$276	26.5%	97	6	19	1	10.9	95.0%
YTD:	6	20.0%	\$1,997,872	2.6%	\$332,979	-14.5%	\$322,500	-11.2%	\$253	-1.1%	82	8	17	6		92.5%
Townhouse	-	0.0%	-	0.0%	-	0.0%	-	0.0%	-	0.0%	-	-	-	-	-	0.0%
YTD:	-	0.0%	-	0.0%	-	0.0%	-	0.0%	-	0.0%	-	-	-	-	-	0.0%
Condominium	-	0.0%	-	0.0%	-	0.0%	-	0.0%	-	0.0%	-	-	-	-	-	0.0%
YTD:	-	0.0%	-	0.0%	-	0.0%	-	0.0%	-	0.0%	-	-	-	-	-	0.0%
<u>New Construction</u>																
Residential (SF/COND/TH)	-	0.0%	-	0.0%	-	0.0%	-	0.0%	-	0.0%	-	1	1	-	-	0.0%
YTD:	-	0.0%	-	0.0%	-	0.0%	-	0.0%	-	0.0%	-	1	1	-	-	0.0%
Single Family	-	0.0%	-	0.0%	-	0.0%	-	0.0%	-	0.0%	-	1	1	-	-	0.0%
YTD:	-	0.0%	-	0.0%	-	0.0%	-	0.0%	-	0.0%	-	1	1	-	-	0.0%
Townhouse	-	0.0%	-	0.0%	-	0.0%	-	0.0%	-	0.0%	-	-	-	-	-	0.0%
YTD:	-	0.0%	-	0.0%	-	0.0%	-	0.0%	-	0.0%	-	-	-	-	-	0.0%
Condominium	-	0.0%	-	0.0%	-	0.0%	-	0.0%	-	0.0%	-	-	-	-	-	0.0%
YTD:	-	0.0%	-	0.0%	-	0.0%	-	0.0%	-	0.0%	-	-	-	-	-	0.0%

* Local Market Area Code: 484; Type: Census Place Group
** Closed Sale counts for most recent 3 months are Preliminary.

Market Analysis By Local Market Area*: Junction

Property Type	Closed Sales**	YoY%	Dollar Volume	YoY%	Average Price	YoY%	Median Price	YoY%	Price/ Sqft	YoY%	DOM	New Listings	Active Listings	Pending Sales	Months Inventory	Close To OLP
<u>All(New and Existing)</u>																
Residential (SF/COND/TH)	-	-100.0%	-	-100.0%	-	-100.0%	-	-100.0%	-	-100.0%	-	-	4	1	5.3	0.0%
YTD:	2	100.0%	\$228,000	90.0%	\$114,000	-5.0%	\$114,000	-5.0%	\$86	-51.9%	184	-	5	1		74.5%
Single Family	-	-100.0%	-	-100.0%	-	-100.0%	-	-100.0%	-	-100.0%	-	-	4	1	5.3	0.0%
YTD:	2	100.0%	\$228,000	90.0%	\$114,000	-5.0%	\$114,000	-5.0%	\$86	-51.9%	184	-	5	1		74.5%
Townhouse	-	0.0%	-	0.0%	-	0.0%	-	0.0%	-	0.0%	-	-	-	-	-	0.0%
YTD:	-	0.0%	-	0.0%	-	0.0%	-	0.0%	-	0.0%	-	-	-	-	-	0.0%
Condominium	-	0.0%	-	0.0%	-	0.0%	-	0.0%	-	0.0%	-	-	-	-	-	0.0%
YTD:	-	0.0%	-	0.0%	-	0.0%	-	0.0%	-	0.0%	-	-	-	-	-	0.0%
<u>Existing Home</u>																
Residential (SF/COND/TH)	-	-100.0%	-	-100.0%	-	-100.0%	-	-100.0%	-	-100.0%	-	-	4	1	5.3	0.0%
YTD:	2	100.0%	\$228,000	90.0%	\$114,000	-5.0%	\$114,000	-5.0%	\$86	-51.9%	184	-	5	1		74.5%
Single Family	-	-100.0%	-	-100.0%	-	-100.0%	-	-100.0%	-	-100.0%	-	-	4	1	5.3	0.0%
YTD:	2	100.0%	\$228,000	90.0%	\$114,000	-5.0%	\$114,000	-5.0%	\$86	-51.9%	184	-	5	1		74.5%
Townhouse	-	0.0%	-	0.0%	-	0.0%	-	0.0%	-	0.0%	-	-	-	-	-	0.0%
YTD:	-	0.0%	-	0.0%	-	0.0%	-	0.0%	-	0.0%	-	-	-	-	-	0.0%
Condominium	-	0.0%	-	0.0%	-	0.0%	-	0.0%	-	0.0%	-	-	-	-	-	0.0%
YTD:	-	0.0%	-	0.0%	-	0.0%	-	0.0%	-	0.0%	-	-	-	-	-	0.0%
<u>New Construction</u>																
Residential (SF/COND/TH)	-	0.0%	-	0.0%	-	0.0%	-	0.0%	-	0.0%	-	-	-	-	-	0.0%
YTD:	-	0.0%	-	0.0%	-	0.0%	-	0.0%	-	0.0%	-	-	-	-	-	0.0%
Single Family	-	0.0%	-	0.0%	-	0.0%	-	0.0%	-	0.0%	-	-	-	-	-	0.0%
YTD:	-	0.0%	-	0.0%	-	0.0%	-	0.0%	-	0.0%	-	-	-	-	-	0.0%
Townhouse	-	0.0%	-	0.0%	-	0.0%	-	0.0%	-	0.0%	-	-	-	-	-	0.0%
YTD:	-	0.0%	-	0.0%	-	0.0%	-	0.0%	-	0.0%	-	-	-	-	-	0.0%
Condominium	-	0.0%	-	0.0%	-	0.0%	-	0.0%	-	0.0%	-	-	-	-	-	0.0%
YTD:	-	0.0%	-	0.0%	-	0.0%	-	0.0%	-	0.0%	-	-	-	-	-	0.0%

* Local Market Area Code: 490; Type: Census Place Group
** Closed Sale counts for most recent 3 months are Preliminary.

Market Analysis By Local Market Area*: Mason

Property Type	Closed Sales**	YoY%	Dollar Volume	YoY%	Average Price	YoY%	Median Price	YoY%	Price/ Sqft	YoY%	DOM	New Listings	Active Listings	Pending Sales	Months Inventory	Close To OLP
<u>All(New and Existing)</u>																
Residential (SF/COND/TH)	3	0.0%	\$1,233,500	143.8%	\$411,167	143.8%	\$235,000	34.3%	\$148	22.2%	154	5	21	3	14.8	88.6%
YTD:	5	25.0%	\$1,703,000	112.6%	\$340,600	70.1%	\$235,000	25.3%	\$158	17.7%	156	13	21	7		91.0%
Single Family	3	0.0%	\$1,233,500	143.8%	\$411,167	143.8%	\$235,000	34.3%	\$148	22.2%	154	5	21	3	14.8	88.6%
YTD:	5	25.0%	\$1,703,000	112.6%	\$340,600	70.1%	\$235,000	25.3%	\$158	17.7%	156	13	21	7		91.0%
Townhouse	-	0.0%	-	0.0%	-	0.0%	-	0.0%	-	0.0%	-	-	-	-	-	0.0%
YTD:	-	0.0%	-	0.0%	-	0.0%	-	0.0%	-	0.0%	-	-	-	-	-	0.0%
Condominium	-	0.0%	-	0.0%	-	0.0%	-	0.0%	-	0.0%	-	-	-	-	-	0.0%
YTD:	-	0.0%	-	0.0%	-	0.0%	-	0.0%	-	0.0%	-	-	-	-	-	0.0%
<u>Existing Home</u>																
Residential (SF/COND/TH)	3	0.0%	\$1,233,500	143.8%	\$411,167	143.8%	\$235,000	34.3%	\$148	22.2%	154	5	21	3	14.8	88.6%
YTD:	5	25.0%	\$1,703,000	112.6%	\$340,600	70.1%	\$235,000	25.3%	\$158	17.7%	156	13	21	7		91.0%
Single Family	3	0.0%	\$1,233,500	143.8%	\$411,167	143.8%	\$235,000	34.3%	\$148	22.2%	154	5	21	3	14.8	88.6%
YTD:	5	25.0%	\$1,703,000	112.6%	\$340,600	70.1%	\$235,000	25.3%	\$158	17.7%	156	13	21	7		91.0%
Townhouse	-	0.0%	-	0.0%	-	0.0%	-	0.0%	-	0.0%	-	-	-	-	-	0.0%
YTD:	-	0.0%	-	0.0%	-	0.0%	-	0.0%	-	0.0%	-	-	-	-	-	0.0%
Condominium	-	0.0%	-	0.0%	-	0.0%	-	0.0%	-	0.0%	-	-	-	-	-	0.0%
YTD:	-	0.0%	-	0.0%	-	0.0%	-	0.0%	-	0.0%	-	-	-	-	-	0.0%
<u>New Construction</u>																
Residential (SF/COND/TH)	-	0.0%	-	0.0%	-	0.0%	-	0.0%	-	0.0%	-	-	-	-	-	0.0%
YTD:	-	0.0%	-	0.0%	-	0.0%	-	0.0%	-	0.0%	-	-	-	-	-	0.0%
Single Family	-	0.0%	-	0.0%	-	0.0%	-	0.0%	-	0.0%	-	-	-	-	-	0.0%
YTD:	-	0.0%	-	0.0%	-	0.0%	-	0.0%	-	0.0%	-	-	-	-	-	0.0%
Townhouse	-	0.0%	-	0.0%	-	0.0%	-	0.0%	-	0.0%	-	-	-	-	-	0.0%
YTD:	-	0.0%	-	0.0%	-	0.0%	-	0.0%	-	0.0%	-	-	-	-	-	0.0%
Condominium	-	0.0%	-	0.0%	-	0.0%	-	0.0%	-	0.0%	-	-	-	-	-	0.0%
YTD:	-	0.0%	-	0.0%	-	0.0%	-	0.0%	-	0.0%	-	-	-	-	-	0.0%

* Local Market Area Code: 620; Type: Census Place Group
** Closed Sale counts for most recent 3 months are Preliminary.

Market Analysis By Local Market Area*: Round Mountain

Property Type	Closed Sales**	YoY%	Dollar Volume	YoY%	Average Price	YoY%	Median Price	YoY%	Price/ Sqft	YoY%	DOM	New Listings	Active Listings	Pending Sales	Months Inventory	Close To OLP
<u>All(New and Existing)</u>																
Residential (SF/COND/TH)	-	0.0%	-	0.0%	-	0.0%	-	0.0%	-	0.0%	-	-	-	-	-	0.0%
YTD:	-	0.0%	-	0.0%	-	0.0%	-	0.0%	-	0.0%	-	-	-	-	-	0.0%
Single Family	-	0.0%	-	0.0%	-	0.0%	-	0.0%	-	0.0%	-	-	-	-	-	0.0%
YTD:	-	0.0%	-	0.0%	-	0.0%	-	0.0%	-	0.0%	-	-	-	-	-	0.0%
Townhouse	-	0.0%	-	0.0%	-	0.0%	-	0.0%	-	0.0%	-	-	-	-	-	0.0%
YTD:	-	0.0%	-	0.0%	-	0.0%	-	0.0%	-	0.0%	-	-	-	-	-	0.0%
Condominium	-	0.0%	-	0.0%	-	0.0%	-	0.0%	-	0.0%	-	-	-	-	-	0.0%
YTD:	-	0.0%	-	0.0%	-	0.0%	-	0.0%	-	0.0%	-	-	-	-	-	0.0%
<u>Existing Home</u>																
Residential (SF/COND/TH)	-	0.0%	-	0.0%	-	0.0%	-	0.0%	-	0.0%	-	-	-	-	-	0.0%
YTD:	-	0.0%	-	0.0%	-	0.0%	-	0.0%	-	0.0%	-	-	-	-	-	0.0%
Single Family	-	0.0%	-	0.0%	-	0.0%	-	0.0%	-	0.0%	-	-	-	-	-	0.0%
YTD:	-	0.0%	-	0.0%	-	0.0%	-	0.0%	-	0.0%	-	-	-	-	-	0.0%
Townhouse	-	0.0%	-	0.0%	-	0.0%	-	0.0%	-	0.0%	-	-	-	-	-	0.0%
YTD:	-	0.0%	-	0.0%	-	0.0%	-	0.0%	-	0.0%	-	-	-	-	-	0.0%
Condominium	-	0.0%	-	0.0%	-	0.0%	-	0.0%	-	0.0%	-	-	-	-	-	0.0%
YTD:	-	0.0%	-	0.0%	-	0.0%	-	0.0%	-	0.0%	-	-	-	-	-	0.0%
<u>New Construction</u>																
Residential (SF/COND/TH)	-	0.0%	-	0.0%	-	0.0%	-	0.0%	-	0.0%	-	-	-	-	-	0.0%
YTD:	-	0.0%	-	0.0%	-	0.0%	-	0.0%	-	0.0%	-	-	-	-	-	0.0%
Single Family	-	0.0%	-	0.0%	-	0.0%	-	0.0%	-	0.0%	-	-	-	-	-	0.0%
YTD:	-	0.0%	-	0.0%	-	0.0%	-	0.0%	-	0.0%	-	-	-	-	-	0.0%
Townhouse	-	0.0%	-	0.0%	-	0.0%	-	0.0%	-	0.0%	-	-	-	-	-	0.0%
YTD:	-	0.0%	-	0.0%	-	0.0%	-	0.0%	-	0.0%	-	-	-	-	-	0.0%
Condominium	-	0.0%	-	0.0%	-	0.0%	-	0.0%	-	0.0%	-	-	-	-	-	0.0%
YTD:	-	0.0%	-	0.0%	-	0.0%	-	0.0%	-	0.0%	-	-	-	-	-	0.0%

* Local Market Area Code: 871; Type: Census Place Group

** Closed Sale counts for most recent 3 months are Preliminary.

Market Analysis By Local Market Area*: Stonewall

Property Type	Closed Sales**	YoY%	Dollar Volume	YoY%	Average Price	YoY%	Median Price	YoY%	Price/ Sqft	YoY%	DOM	New Listings	Active Listings	Pending Sales	Months Inventory	Close To OLP
<u>All(New and Existing)</u>																
Residential (SF/COND/TH)	-	-100.0%	-	-100.0%	-	-100.0%	-	-100.0%	-	-100.0%	-	1	2	-	8.0	0.0%
YTD:	-	-100.0%	-	-100.0%	-	-100.0%	-	-100.0%	-	-100.0%	-	3	2	-		0.0%
Single Family	-	-100.0%	-	-100.0%	-	-100.0%	-	-100.0%	-	-100.0%	-	1	2	-	8.0	0.0%
YTD:	-	-100.0%	-	-100.0%	-	-100.0%	-	-100.0%	-	-100.0%	-	3	2	-		0.0%
Townhouse	-	0.0%	-	0.0%	-	0.0%	-	0.0%	-	0.0%	-	-	-	-	-	0.0%
YTD:	-	0.0%	-	0.0%	-	0.0%	-	0.0%	-	0.0%	-	-	-	-	-	0.0%
Condominium	-	0.0%	-	0.0%	-	0.0%	-	0.0%	-	0.0%	-	-	-	-	-	0.0%
YTD:	-	0.0%	-	0.0%	-	0.0%	-	0.0%	-	0.0%	-	-	-	-	-	0.0%
<u>Existing Home</u>																
Residential (SF/COND/TH)	-	-100.0%	-	-100.0%	-	-100.0%	-	-100.0%	-	-100.0%	-	1	2	-	8.0	0.0%
YTD:	-	-100.0%	-	-100.0%	-	-100.0%	-	-100.0%	-	-100.0%	-	3	2	-		0.0%
Single Family	-	-100.0%	-	-100.0%	-	-100.0%	-	-100.0%	-	-100.0%	-	1	2	-	8.0	0.0%
YTD:	-	-100.0%	-	-100.0%	-	-100.0%	-	-100.0%	-	-100.0%	-	3	2	-		0.0%
Townhouse	-	0.0%	-	0.0%	-	0.0%	-	0.0%	-	0.0%	-	-	-	-	-	0.0%
YTD:	-	0.0%	-	0.0%	-	0.0%	-	0.0%	-	0.0%	-	-	-	-	-	0.0%
Condominium	-	0.0%	-	0.0%	-	0.0%	-	0.0%	-	0.0%	-	-	-	-	-	0.0%
YTD:	-	0.0%	-	0.0%	-	0.0%	-	0.0%	-	0.0%	-	-	-	-	-	0.0%
<u>New Construction</u>																
Residential (SF/COND/TH)	-	0.0%	-	0.0%	-	0.0%	-	0.0%	-	0.0%	-	-	-	-	-	0.0%
YTD:	-	0.0%	-	0.0%	-	0.0%	-	0.0%	-	0.0%	-	-	-	-	-	0.0%
Single Family	-	0.0%	-	0.0%	-	0.0%	-	0.0%	-	0.0%	-	-	-	-	-	0.0%
YTD:	-	0.0%	-	0.0%	-	0.0%	-	0.0%	-	0.0%	-	-	-	-	-	0.0%
Townhouse	-	0.0%	-	0.0%	-	0.0%	-	0.0%	-	0.0%	-	-	-	-	-	0.0%
YTD:	-	0.0%	-	0.0%	-	0.0%	-	0.0%	-	0.0%	-	-	-	-	-	0.0%
Condominium	-	0.0%	-	0.0%	-	0.0%	-	0.0%	-	0.0%	-	-	-	-	-	0.0%
YTD:	-	0.0%	-	0.0%	-	0.0%	-	0.0%	-	0.0%	-	-	-	-	-	0.0%

* Local Market Area Code: 966; Type: Census Place Group
** Closed Sale counts for most recent 3 months are Preliminary.

