

Market Analysis By State: Texas

Property Type	Closed Sales*	YoY%	Dollar Volume	YoY%	Average Price	YoY%	Median Price	YoY%	Price/Sqft	YoY%	DOM	New Listings	Active Listings	Pending Sales	Months Inventory	Close To OLP
<b>All(New and Existing)</b>																
Residential (SF/COND/TH)	28,673	-15.8%	\$11,954,661,055	-18.4%	\$416,931	-3.1%	\$339,706	-2.9%	\$190	-3.8%	58	41,916	80,019	33,404	2.8	95.6%
YTD:	101,019	-17.1%	\$40,442,719,074	-17.6%	\$400,348	-0.7%	\$330,000	0.0%	\$185	-1.5%	62	154,653	79,118	119,494		94.4%
Single Family	26,854	-15.1%	\$11,304,060,234	-17.9%	\$420,945	-3.3%	\$340,000	-2.9%	\$187	-3.7%	59	39,139	74,606	31,388	2.8	95.6%
YTD:	94,752	-16.2%	\$38,293,839,663	-16.9%	\$404,148	-0.8%	\$331,990	-0.9%	\$182	-1.3%	63	144,128	74,032	112,168		94.3%
Townhouse	812	-19.1%	\$294,459,406	-19.8%	\$362,635	-0.8%	\$339,500	-0.1%	\$197	0.6%	56	1,112	1,943	862	2.5	96.3%
YTD:	2,750	-23.1%	\$959,167,591	-23.2%	\$348,788	-0.1%	\$328,000	3.7%	\$192	2.0%	59	4,255	1,894	3,236		95.8%
Condominium	975	-30.2%	\$344,977,687	-32.7%	\$353,823	-3.5%	\$265,000	2.0%	\$270	-3.5%	47	1,665	3,470	1,154	3.3	96.4%
YTD:	3,472	-33.0%	\$1,174,785,364	-33.6%	\$338,360	-1.0%	\$250,000	2.0%	\$259	-1.2%	52	6,270	3,192	4,090		95.5%
<b>Existing Home</b>																
Residential (SF/COND/TH)	21,929	-22.9%	\$8,952,050,186	-26.9%	\$408,229	-5.2%	\$324,072	-5.2%	\$189	-4.9%	47	32,453	54,795	24,845	2.4	96.0%
YTD:	75,464	-25.0%	\$29,356,994,647	-26.8%	\$389,020	-2.4%	\$315,000	-2.2%	\$183	-2.5%	53	117,062	52,640	87,891		94.7%
Single Family	20,373	-22.3%	\$8,410,414,726	-26.6%	\$412,822	-5.5%	\$325,000	-6.3%	\$185	-4.8%	47	30,083	50,633	23,159	2.4	95.9%
YTD:	70,074	-24.4%	\$27,584,508,466	-26.4%	\$393,648	-2.6%	\$316,000	-2.8%	\$179	-2.4%	53	108,338	48,819	81,788		94.6%
Townhouse	601	-30.3%	\$213,664,144	-31.3%	\$355,514	-1.5%	\$330,000	0.9%	\$191	-1.0%	44	810	1,180	616	1.9	96.8%
YTD:	2,081	-31.7%	\$695,952,367	-33.8%	\$334,432	-3.1%	\$303,000	-1.1%	\$184	-0.6%	53	3,053	1,114	2,353		96.2%
Condominium	926	-31.2%	\$317,879,155	-33.9%	\$343,282	-4.0%	\$255,000	2.1%	\$264	-5.2%	45	1,560	2,982	1,070	3.0	96.4%
YTD:	3,262	-33.5%	\$1,061,047,675	-33.8%	\$325,275	-0.4%	\$240,000	1.3%	\$253	-2.0%	49	5,671	2,706	3,750		95.6%
<b>New Construction</b>																
Residential (SF/COND/TH)	6,735	19.9%	\$2,999,429,432	24.7%	\$445,350	4.0%	\$379,755	3.2%	\$196	0.0%	95	9,463	25,224	8,559	4.2	94.5%
YTD:	25,537	20.4%	\$11,078,255,708	23.3%	\$433,812	2.4%	\$368,500	1.0%	\$193	0.7%	91	37,591	26,478	31,603		93.6%
Single Family	6,467	19.2%	\$2,888,205,663	24.6%	\$446,607	4.5%	\$379,507	3.7%	\$194	-0.3%	96	9,056	23,973	8,229	4.1	94.4%
YTD:	24,649	20.8%	\$10,697,294,347	24.1%	\$433,985	2.7%	\$366,890	1.0%	\$191	0.9%	91	35,790	25,212	30,380		93.6%
Townhouse	209	47.2%	\$80,016,727	42.8%	\$382,855	-3.0%	\$358,548	-6.2%	\$214	-0.2%	90	302	763	246	4.8	94.8%
YTD:	666	25.9%	\$262,118,286	33.0%	\$393,571	5.6%	\$380,000	8.6%	\$216	5.5%	76	1,202	780	883		94.5%
Condominium	49	-3.9%	\$27,195,198	-12.6%	\$555,004	-9.0%	\$519,900	14.2%	\$384	24.1%	93	105	488	84	9.1	95.3%
YTD:	209	-24.0%	\$113,336,118	-32.3%	\$542,278	-11.0%	\$491,981	9.3%	\$346	5.1%	97	599	485	340		93.5%

\* Closed Sale counts for most recent 3 months are Preliminary.

Trend Analysis By State: Texas

Residential, All (New and Existing)



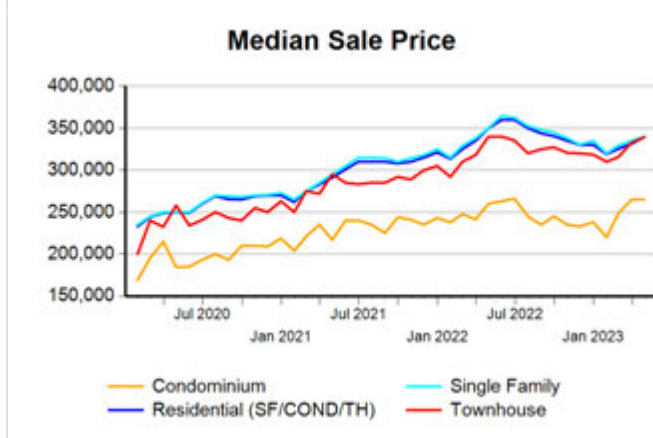
Single Family, New vs. Existing



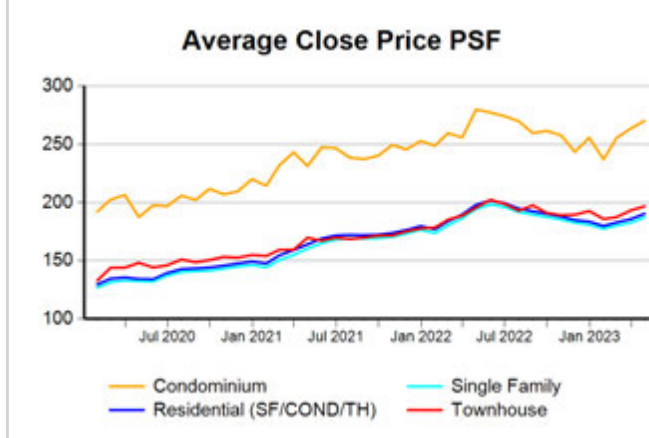
COND/TH, All (New and Existing)



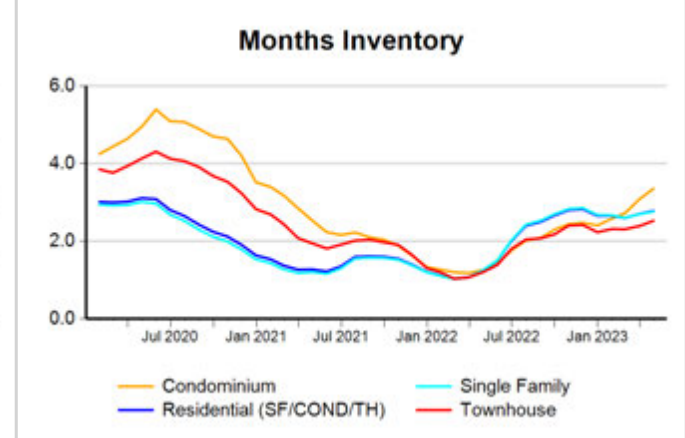
All (New and Existing) Construction



All (New and Existing) Construction



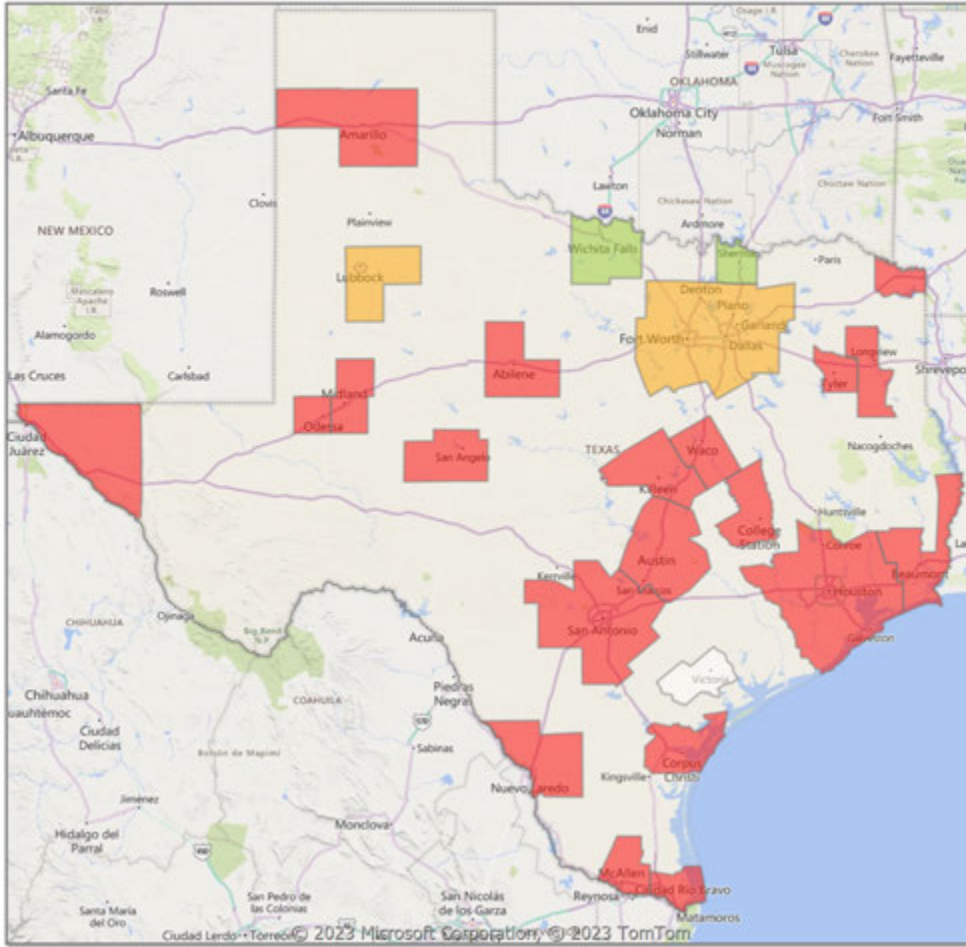
All (New and Existing) Construction



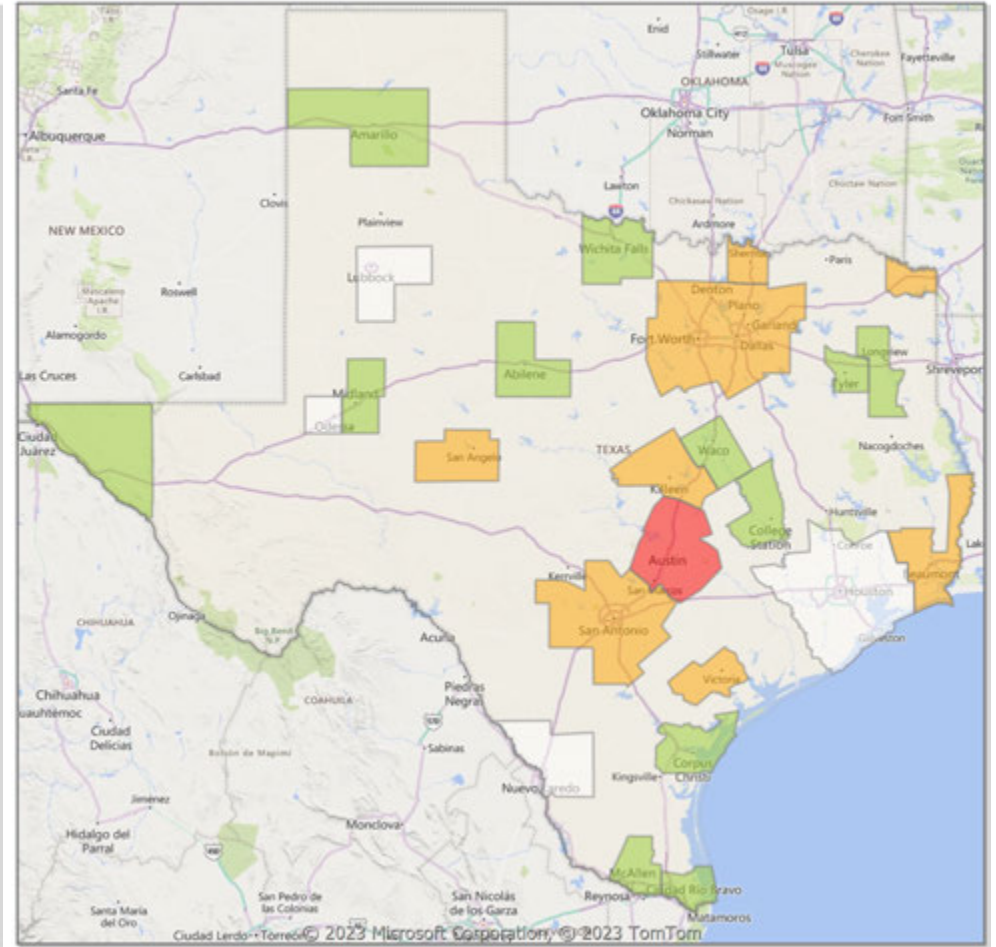
\* Closed Sale counts for most recent 3 months are Preliminary.

**Comparison By Metropolitan Statistical Area in Texas**

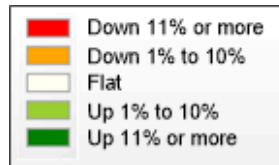
**Residential\* Closed Sales YoY Percentage Change**



**Residential\* Avg Close Price Per SqFt YoY Percentage Change**

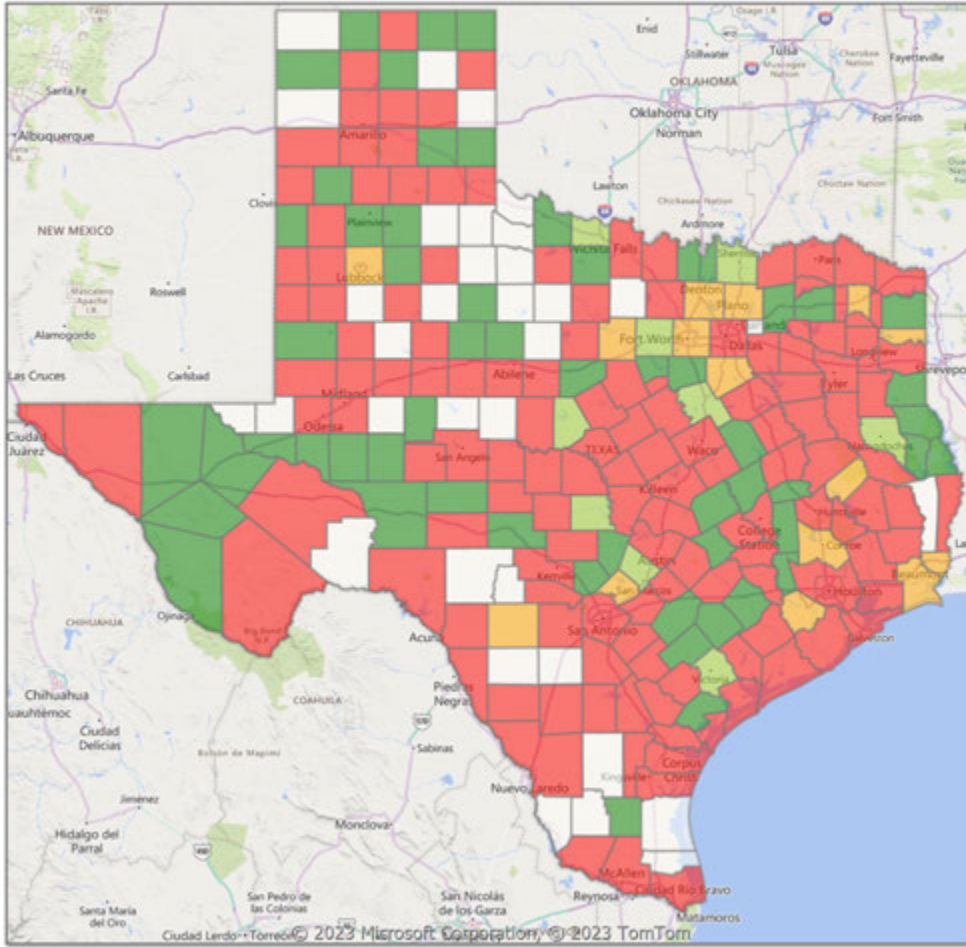


\* Residential includes Single Family, Condominium and Townhouse.

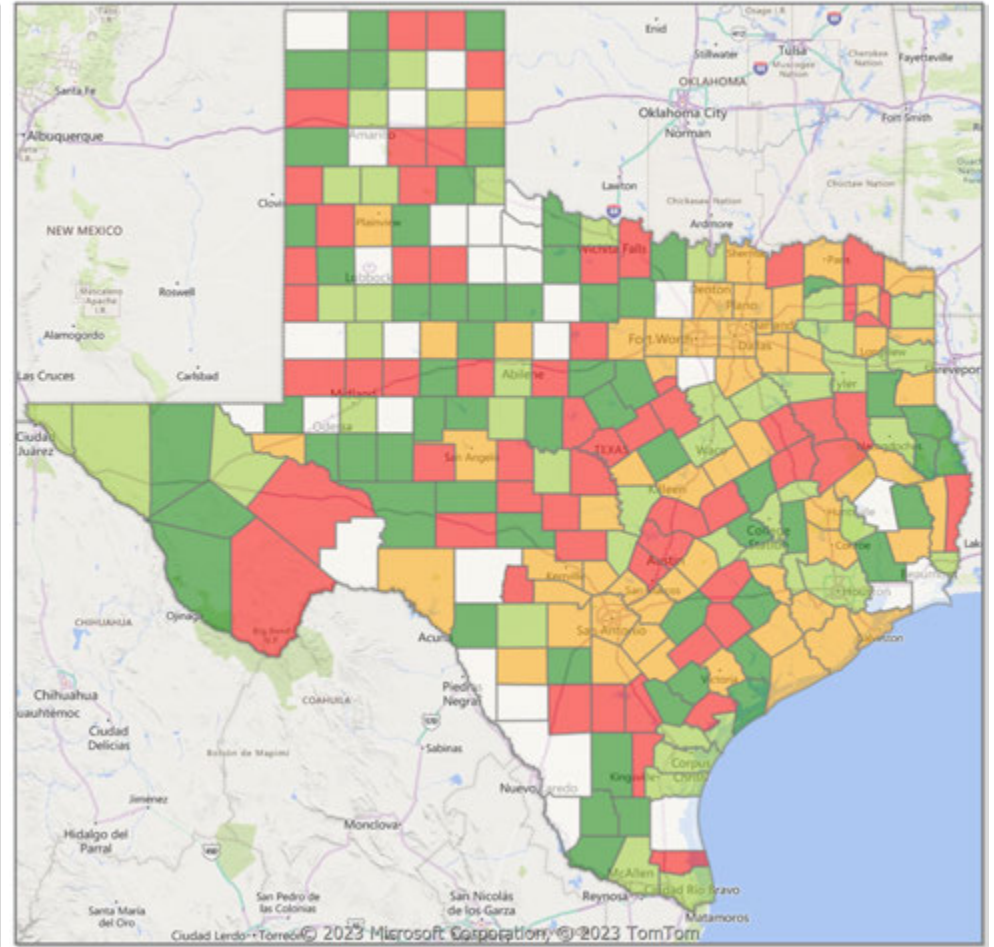


**Comparison By County in Texas**

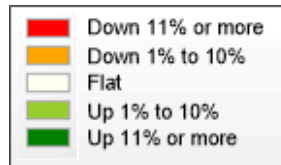
**Residential\* Closed Sales YoY Percentage Change**



**Residential\* Avg Close Price Per SqFt YoY Percentage Change**



\* Residential includes Single Family, Condominium and Townhouse.



Market Analysis By County: Blanco County

Property Type	Closed Sales*	YoY%	Dollar Volume	YoY%	Average Price	YoY%	Median Price	YoY%	Price/Sqft	YoY%	DOM	New Listings	Active Listings	Pending Sales	Months Inventory	Close To OLP
<b>All(New and Existing)</b>																
Residential (SF/COND/TH)	16	23.1%	\$8,034,057	38.3%	\$502,129	12.3%	\$460,500	8.4%	\$257	7.2%	59	38	163	10	10.3	92.9%
YTD:	60	-42.9%	\$29,585,451	-45.1%	\$493,091	-4.0%	\$469,000	6.6%	\$258	-0.8%	68	139	153	51		94.8%
Single Family	16	23.1%	\$8,034,057	38.3%	\$502,129	12.3%	\$460,500	8.4%	\$257	7.2%	59	38	163	10	10.3	92.9%
YTD:	60	-42.9%	\$29,585,451	-45.1%	\$493,091	-4.0%	\$469,000	6.6%	\$258	-0.8%	68	139	153	51		94.8%
Townhouse	-	0.0%	-	0.0%	-	0.0%	-	0.0%	-	0.0%	-	-	-	-	-	0.0%
YTD:	-	0.0%	-	0.0%	-	0.0%	-	0.0%	-	0.0%	-	-	-	-	-	0.0%
Condominium	-	0.0%	-	0.0%	-	0.0%	-	0.0%	-	0.0%	-	-	-	-	-	0.0%
YTD:	-	0.0%	-	0.0%	-	0.0%	-	0.0%	-	0.0%	-	-	-	-	-	0.0%
<b>Existing Home</b>																
Residential (SF/COND/TH)	11	37.5%	\$5,762,900	63.2%	\$523,900	18.7%	\$485,000	12.7%	\$264	13.2%	67	20	84	6	10.0	92.5%
YTD:	32	-52.2%	\$16,742,716	-56.6%	\$523,210	-9.1%	\$476,000	-8.5%	\$273	-2.9%	66	68	74	24		93.1%
Single Family	11	37.5%	\$5,762,900	63.2%	\$523,900	18.7%	\$485,000	12.7%	\$264	13.2%	67	20	84	6	10.1	92.5%
YTD:	32	-52.2%	\$16,742,716	-56.6%	\$523,210	-9.1%	\$476,000	-8.5%	\$273	-2.9%	66	68	74	24		93.1%
Townhouse	-	0.0%	-	0.0%	-	0.0%	-	0.0%	-	0.0%	-	-	-	-	-	0.0%
YTD:	-	0.0%	-	0.0%	-	0.0%	-	0.0%	-	0.0%	-	-	-	-	-	0.0%
Condominium	-	0.0%	-	0.0%	-	0.0%	-	0.0%	-	0.0%	-	-	-	-	-	0.0%
YTD:	-	0.0%	-	0.0%	-	0.0%	-	0.0%	-	0.0%	-	-	-	-	-	0.0%
<b>New Construction</b>																
Residential (SF/COND/TH)	5	0.0%	\$2,238,500	-1.8%	\$447,700	-1.8%	\$442,450	4.1%	\$241	-4.2%	39	18	79	4	10.8	94.0%
YTD:	27	-29.0%	\$12,343,852	-19.7%	\$457,180	13.1%	\$459,500	19.7%	\$241	8.6%	71	71	79	27		96.8%
Single Family	5	0.0%	\$2,238,500	-1.8%	\$447,700	-1.8%	\$442,450	4.1%	\$241	-4.2%	39	18	79	4	10.8	94.0%
YTD:	27	-29.0%	\$12,343,852	-19.7%	\$457,180	13.1%	\$459,500	19.7%	\$241	8.6%	71	71	79	27		96.8%
Townhouse	-	0.0%	-	0.0%	-	0.0%	-	0.0%	-	0.0%	-	-	-	-	-	0.0%
YTD:	-	0.0%	-	0.0%	-	0.0%	-	0.0%	-	0.0%	-	-	-	-	-	0.0%
Condominium	-	0.0%	-	0.0%	-	0.0%	-	0.0%	-	0.0%	-	-	-	-	-	0.0%
YTD:	-	0.0%	-	0.0%	-	0.0%	-	0.0%	-	0.0%	-	-	-	-	-	0.0%

\* Closed Sale counts for most recent 3 months are Preliminary.

Market Analysis By County: Gillespie County

Property Type	Closed Sales*	YoY%	Dollar Volume	YoY%	Average Price	YoY%	Median Price	YoY%	Price/Sqft	YoY%	DOM	New Listings	Active Listings	Pending Sales	Months Inventory	Close To OLP
<b>All(New and Existing)</b>																
Residential (SF/COND/TH)	37	-27.5%	\$28,612,386	-27.3%	\$773,308	0.2%	\$639,500	-5.4%	\$335	-12.2%	131	47	221	33	7.3	90.5%
YTD:	104	-37.4%	\$73,908,112	-34.9%	\$710,655	4.0%	\$595,000	3.4%	\$323	-8.5%	115	219	209	85		92.0%
Single Family	37	-27.5%	\$28,612,386	-27.3%	\$773,308	0.2%	\$639,500	-5.4%	\$335	-12.2%	131	47	217	33	7.2	90.5%
YTD:	104	-37.4%	\$73,908,112	-34.9%	\$710,655	4.0%	\$595,000	3.4%	\$323	-8.5%	115	218	206	85		92.0%
Townhouse	-	0.0%	-	0.0%	-	0.0%	-	0.0%	-	0.0%	-	-	4	-	-	0.0%
YTD:	-	0.0%	-	0.0%	-	0.0%	-	0.0%	-	0.0%	-	1	3	-	-	0.0%
Condominium	-	0.0%	-	0.0%	-	0.0%	-	0.0%	-	0.0%	-	-	-	-	-	0.0%
YTD:	-	0.0%	-	0.0%	-	0.0%	-	0.0%	-	0.0%	-	-	-	-	-	0.0%
<b>Existing Home</b>																
Residential (SF/COND/TH)	30	-30.2%	\$24,310,278	-31.3%	\$810,343	-1.6%	\$695,000	0.0%	\$348	-13.7%	140	44	193	25	7.8	89.0%
YTD:	84	-38.2%	\$61,930,267	-36.6%	\$737,265	2.6%	\$617,500	-5.0%	\$332	-11.1%	119	192	176	70		90.6%
Single Family	30	-30.2%	\$24,310,278	-31.3%	\$810,343	-1.6%	\$695,000	0.0%	\$348	-13.7%	140	44	189	25	7.7	89.0%
YTD:	84	-38.2%	\$61,930,267	-36.6%	\$737,265	2.6%	\$617,500	-5.0%	\$332	-11.1%	119	191	172	70		90.6%
Townhouse	-	0.0%	-	0.0%	-	0.0%	-	0.0%	-	0.0%	-	-	4	-	-	0.0%
YTD:	-	0.0%	-	0.0%	-	0.0%	-	0.0%	-	0.0%	-	1	3	-	-	0.0%
Condominium	-	0.0%	-	0.0%	-	0.0%	-	0.0%	-	0.0%	-	-	-	-	-	0.0%
YTD:	-	0.0%	-	0.0%	-	0.0%	-	0.0%	-	0.0%	-	-	-	-	-	0.0%
<b>New Construction</b>																
Residential (SF/COND/TH)	6	-25.0%	\$3,528,800	-10.6%	\$588,133	19.2%	\$555,000	23.8%	\$270	1.8%	83	3	28	8	5.2	96.9%
YTD:	19	-36.7%	\$11,267,190	-28.4%	\$593,010	13.0%	\$550,000	19.1%	\$281	9.0%	98	27	33	15		97.5%
Single Family	6	-25.0%	\$3,528,800	-10.6%	\$588,133	19.2%	\$555,000	23.8%	\$270	1.8%	83	3	28	8	5.2	96.9%
YTD:	19	-36.7%	\$11,267,190	-28.4%	\$593,010	13.0%	\$550,000	19.1%	\$281	9.0%	98	27	33	15		97.5%
Townhouse	-	0.0%	-	0.0%	-	0.0%	-	0.0%	-	0.0%	-	-	-	-	-	0.0%
YTD:	-	0.0%	-	0.0%	-	0.0%	-	0.0%	-	0.0%	-	-	-	-	-	0.0%
Condominium	-	0.0%	-	0.0%	-	0.0%	-	0.0%	-	0.0%	-	-	-	-	-	0.0%
YTD:	-	0.0%	-	0.0%	-	0.0%	-	0.0%	-	0.0%	-	-	-	-	-	0.0%

\* Closed Sale counts for most recent 3 months are Preliminary.



Market Analysis By County: Kimble County

Property Type	Closed Sales*	YoY%	Dollar Volume	YoY%	Average Price	YoY%	Median Price	YoY%	Price/Sqft	YoY%	DOM	New Listings	Active Listings	Pending Sales	Months Inventory	Close To OLP
<b>All(New and Existing)</b>																
Residential (SF/COND/TH)	1	100.0%	\$216,325	100.0%	\$216,325	100.0%	\$216,325	100.0%	\$149	100.0%	3	-	6	3	6.5	0.0%
YTD:	3	0.0%	\$1,186,325	-20.4%	\$395,442	-20.4%	\$216,325	-51.4%	\$240	-1.7%	36	10	7	6		81.8%
Single Family	1	100.0%	\$216,325	100.0%	\$216,325	100.0%	\$216,325	100.0%	\$149	100.0%	3	-	6	3	6.5	0.0%
YTD:	3	0.0%	\$1,186,325	-20.4%	\$395,442	-20.4%	\$216,325	-51.4%	\$240	-1.7%	36	10	7	6		81.8%
Townhouse	-	0.0%	-	0.0%	-	0.0%	-	0.0%	-	0.0%	-	-	-	-	-	0.0%
YTD:	-	0.0%	-	0.0%	-	0.0%	-	0.0%	-	0.0%	-	-	-	-	-	0.0%
Condominium	-	0.0%	-	0.0%	-	0.0%	-	0.0%	-	0.0%	-	-	-	-	-	0.0%
YTD:	-	0.0%	-	0.0%	-	0.0%	-	0.0%	-	0.0%	-	-	-	-	-	0.0%
<b>Existing Home</b>																
Residential (SF/COND/TH)	1	100.0%	\$216,325	100.0%	\$216,325	100.0%	\$216,325	100.0%	\$149	100.0%	3	-	6	3	8.0	0.0%
YTD:	2	-33.3%	\$286,325	-80.8%	\$143,163	-71.2%	\$143,163	-67.8%	\$94	-61.6%	8	10	7	5		0.0%
Single Family	1	100.0%	\$216,325	100.0%	\$216,325	100.0%	\$216,325	100.0%	\$149	100.0%	3	-	6	3	8.0	0.0%
YTD:	2	-33.3%	\$286,325	-80.8%	\$143,163	-71.2%	\$143,163	-67.8%	\$94	-61.6%	8	10	7	5		0.0%
Townhouse	-	0.0%	-	0.0%	-	0.0%	-	0.0%	-	0.0%	-	-	-	-	-	0.0%
YTD:	-	0.0%	-	0.0%	-	0.0%	-	0.0%	-	0.0%	-	-	-	-	-	0.0%
Condominium	-	0.0%	-	0.0%	-	0.0%	-	0.0%	-	0.0%	-	-	-	-	-	0.0%
YTD:	-	0.0%	-	0.0%	-	0.0%	-	0.0%	-	0.0%	-	-	-	-	-	0.0%
<b>New Construction</b>																
Residential (SF/COND/TH)	-	0.0%	-	0.0%	-	0.0%	-	0.0%	-	0.0%	-	-	-	-	-	0.0%
YTD:	1	100.0%	\$900,000	100.0%	\$900,000	100.0%	\$900,000	100.0%	\$533	100.0%	94	-	1	1		81.8%
Single Family	-	0.0%	-	0.0%	-	0.0%	-	0.0%	-	0.0%	-	-	-	-	-	0.0%
YTD:	1	100.0%	\$900,000	100.0%	\$900,000	100.0%	\$900,000	100.0%	\$533	100.0%	94	-	1	1		81.8%
Townhouse	-	0.0%	-	0.0%	-	0.0%	-	0.0%	-	0.0%	-	-	-	-	-	0.0%
YTD:	-	0.0%	-	0.0%	-	0.0%	-	0.0%	-	0.0%	-	-	-	-	-	0.0%
Condominium	-	0.0%	-	0.0%	-	0.0%	-	0.0%	-	0.0%	-	-	-	-	-	0.0%
YTD:	-	0.0%	-	0.0%	-	0.0%	-	0.0%	-	0.0%	-	-	-	-	-	0.0%

\* Closed Sale counts for most recent 3 months are Preliminary.

Market Analysis By County: Mason County

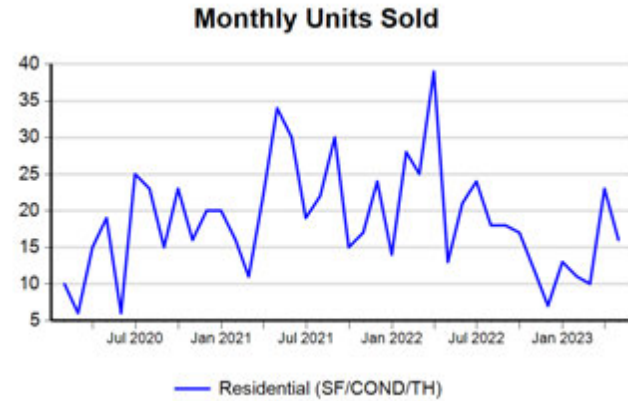
Property Type	Closed Sales*	YoY%	Dollar Volume	YoY%	Average Price	YoY%	Median Price	YoY%	Price/Sqft	YoY%	DOM	New Listings	Active Listings	Pending Sales	Months Inventory	Close To OLP
<b>All(New and Existing)</b>																
Residential (SF/COND/TH)	1	-90.0%	\$165,000	-93.0%	\$165,000	-29.7%	\$165,000	-25.8%	\$98	-48.8%	101	4	36	3	16.0	82.5%
YTD:	8	-63.6%	\$1,834,250	-72.0%	\$229,281	-22.9%	\$225,000	-16.7%	\$172	-24.2%	123	35	31	7		85.6%
Single Family	1	-90.0%	\$165,000	-93.0%	\$165,000	-29.7%	\$165,000	-25.8%	\$98	-48.8%	101	4	36	3	16.0	82.5%
YTD:	8	-63.6%	\$1,834,250	-72.0%	\$229,281	-22.9%	\$225,000	-16.7%	\$172	-24.2%	123	35	31	7		85.6%
Townhouse	-	0.0%	-	0.0%	-	0.0%	-	0.0%	-	0.0%	-	-	-	-	-	0.0%
YTD:	-	0.0%	-	0.0%	-	0.0%	-	0.0%	-	0.0%	-	-	-	-	-	0.0%
Condominium	-	0.0%	-	0.0%	-	0.0%	-	0.0%	-	0.0%	-	-	-	-	-	0.0%
YTD:	-	0.0%	-	0.0%	-	0.0%	-	0.0%	-	0.0%	-	-	-	-	-	0.0%
<b>Existing Home</b>																
Residential (SF/COND/TH)	1	-90.0%	\$165,000	-93.0%	\$165,000	-29.7%	\$165,000	-25.8%	\$98	-48.8%	101	4	36	3	18.0	82.5%
YTD:	8	-63.6%	\$1,834,250	-72.0%	\$229,281	-22.9%	\$225,000	-16.7%	\$172	-24.2%	123	35	31	7		85.6%
Single Family	1	-90.0%	\$165,000	-93.0%	\$165,000	-29.7%	\$165,000	-25.8%	\$98	-48.8%	101	4	36	3	18.0	82.5%
YTD:	8	-63.6%	\$1,834,250	-72.0%	\$229,281	-22.9%	\$225,000	-16.7%	\$172	-24.2%	123	35	31	7		85.6%
Townhouse	-	0.0%	-	0.0%	-	0.0%	-	0.0%	-	0.0%	-	-	-	-	-	0.0%
YTD:	-	0.0%	-	0.0%	-	0.0%	-	0.0%	-	0.0%	-	-	-	-	-	0.0%
Condominium	-	0.0%	-	0.0%	-	0.0%	-	0.0%	-	0.0%	-	-	-	-	-	0.0%
YTD:	-	0.0%	-	0.0%	-	0.0%	-	0.0%	-	0.0%	-	-	-	-	-	0.0%
<b>New Construction</b>																
Residential (SF/COND/TH)	-	0.0%	-	0.0%	-	0.0%	-	0.0%	-	0.0%	-	-	-	-	-	0.0%
YTD:	-	0.0%	-	0.0%	-	0.0%	-	0.0%	-	0.0%	-	-	-	-	-	0.0%
Single Family	-	0.0%	-	0.0%	-	0.0%	-	0.0%	-	0.0%	-	-	-	-	-	0.0%
YTD:	-	0.0%	-	0.0%	-	0.0%	-	0.0%	-	0.0%	-	-	-	-	-	0.0%
Townhouse	-	0.0%	-	0.0%	-	0.0%	-	0.0%	-	0.0%	-	-	-	-	-	0.0%
YTD:	-	0.0%	-	0.0%	-	0.0%	-	0.0%	-	0.0%	-	-	-	-	-	0.0%
Condominium	-	0.0%	-	0.0%	-	0.0%	-	0.0%	-	0.0%	-	-	-	-	-	0.0%
YTD:	-	0.0%	-	0.0%	-	0.0%	-	0.0%	-	0.0%	-	-	-	-	-	0.0%

\* Closed Sale counts for most recent 3 months are Preliminary.



Trend Analysis By County: Blanco County

Residential, All (New and Existing)



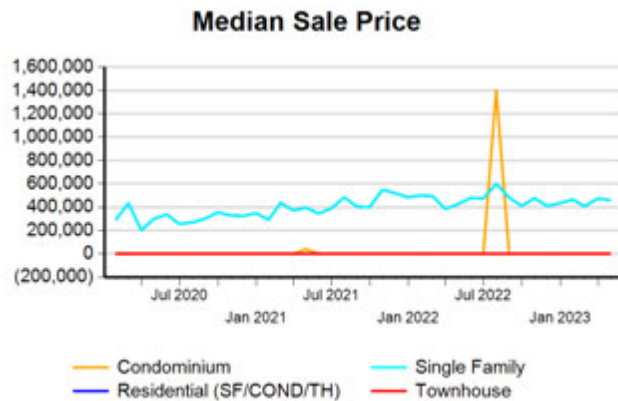
Single Family, New vs. Existing



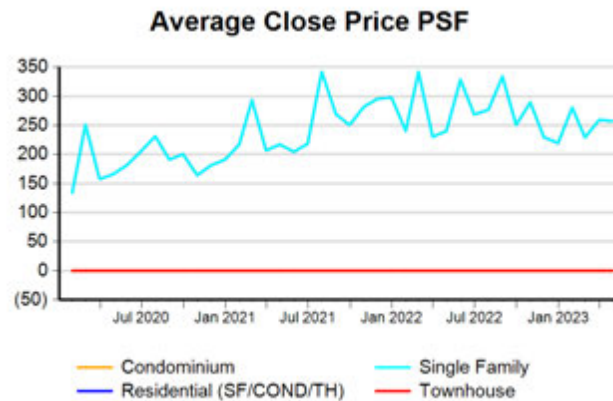
COND/TH, All (New and Existing)



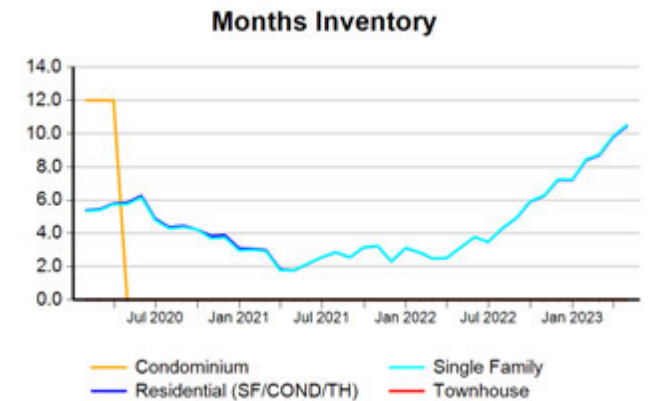
All (New and Existing) Construction



All (New and Existing) Construction



All (New and Existing) Construction



\* Closed Sale counts for most recent 3 months are Preliminary.

Trend Analysis By County: Gillespie County

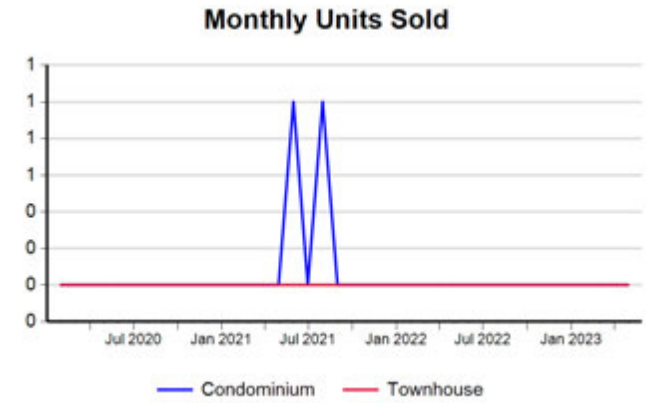
Residential, All (New and Existing)



Single Family, New vs. Existing



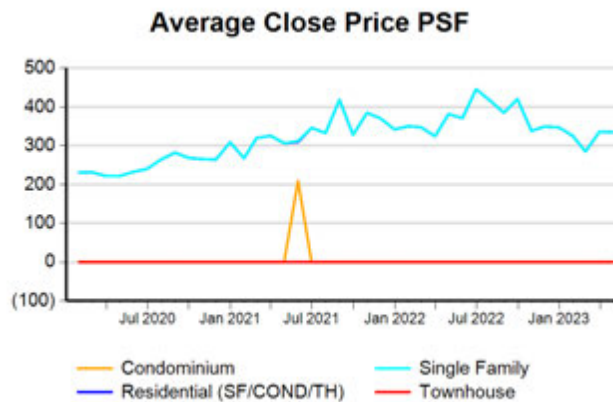
COND/TH, All (New and Existing)



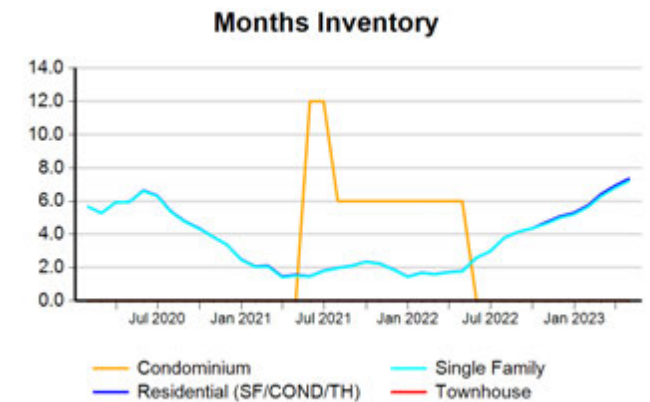
All (New and Existing) Construction



All (New and Existing) Construction



All (New and Existing) Construction

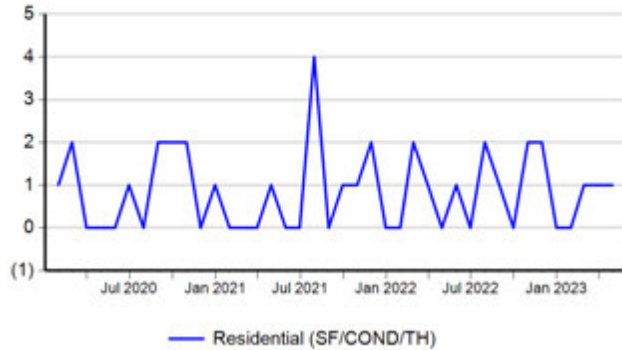


\* Closed Sale counts for most recent 3 months are Preliminary.

Trend Analysis By County: Kimble County

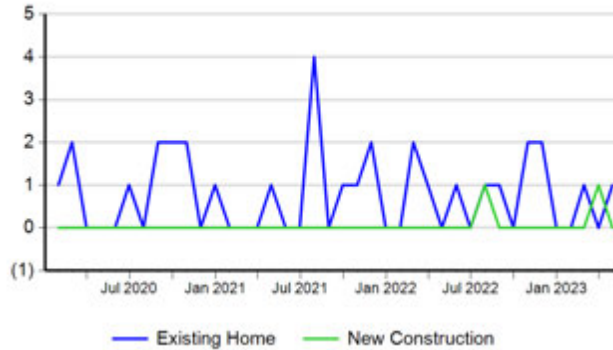
Residential, All (New and Existing)

Monthly Units Sold



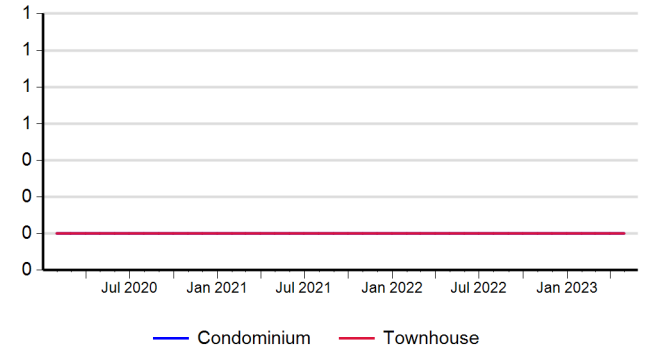
Single Family, New vs. Existing

Monthly Units Sold



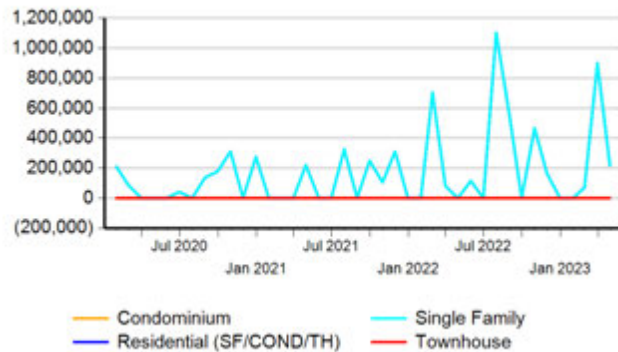
COND/TH, All (New and Existing)

Monthly Units Sold



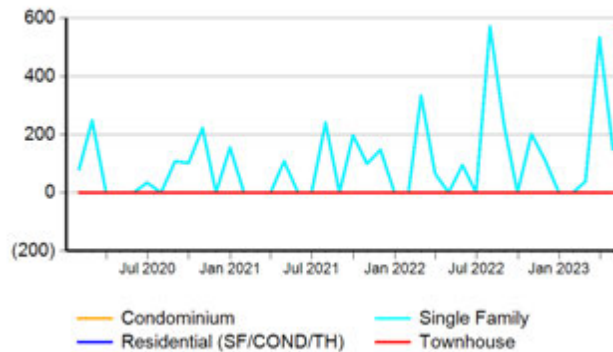
All (New and Existing) Construction

Median Sale Price



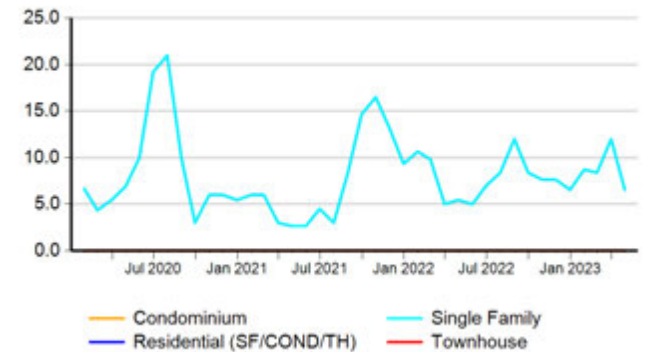
All (New and Existing) Construction

Average Close Price PSF



All (New and Existing) Construction

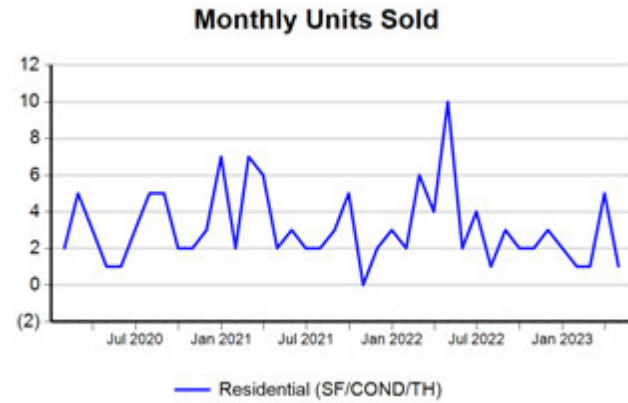
Months Inventory



\* Closed Sale counts for most recent 3 months are Preliminary.

Trend Analysis By County: Mason County

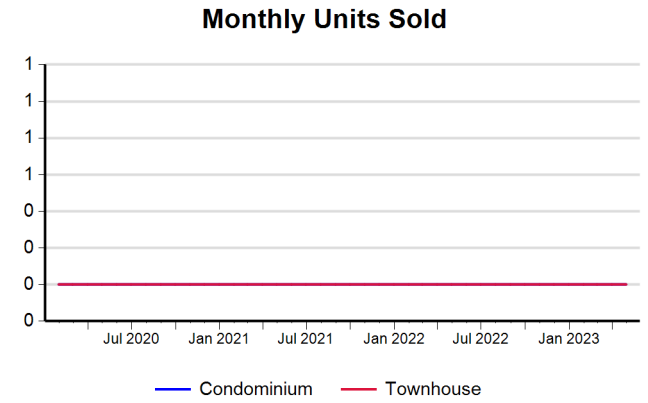
Residential, All (New and Existing)



Single Family, New vs. Existing



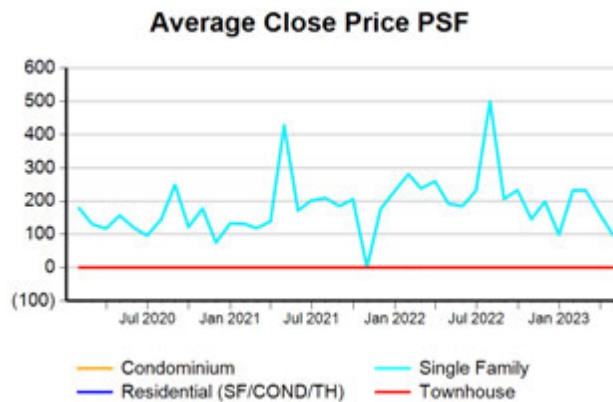
COND/TH, All (New and Existing)



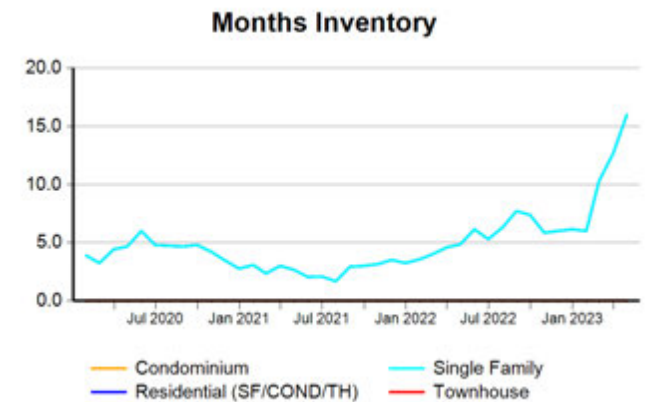
All (New and Existing) Construction



All (New and Existing) Construction



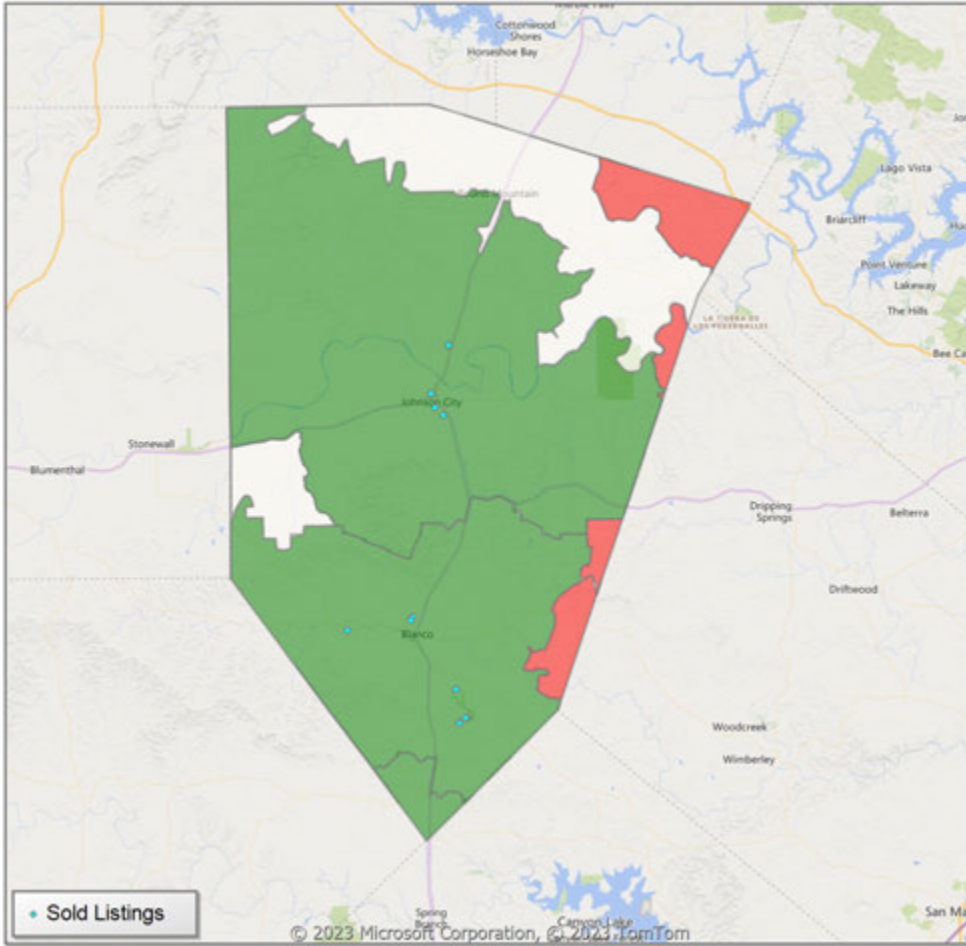
All (New and Existing) Construction



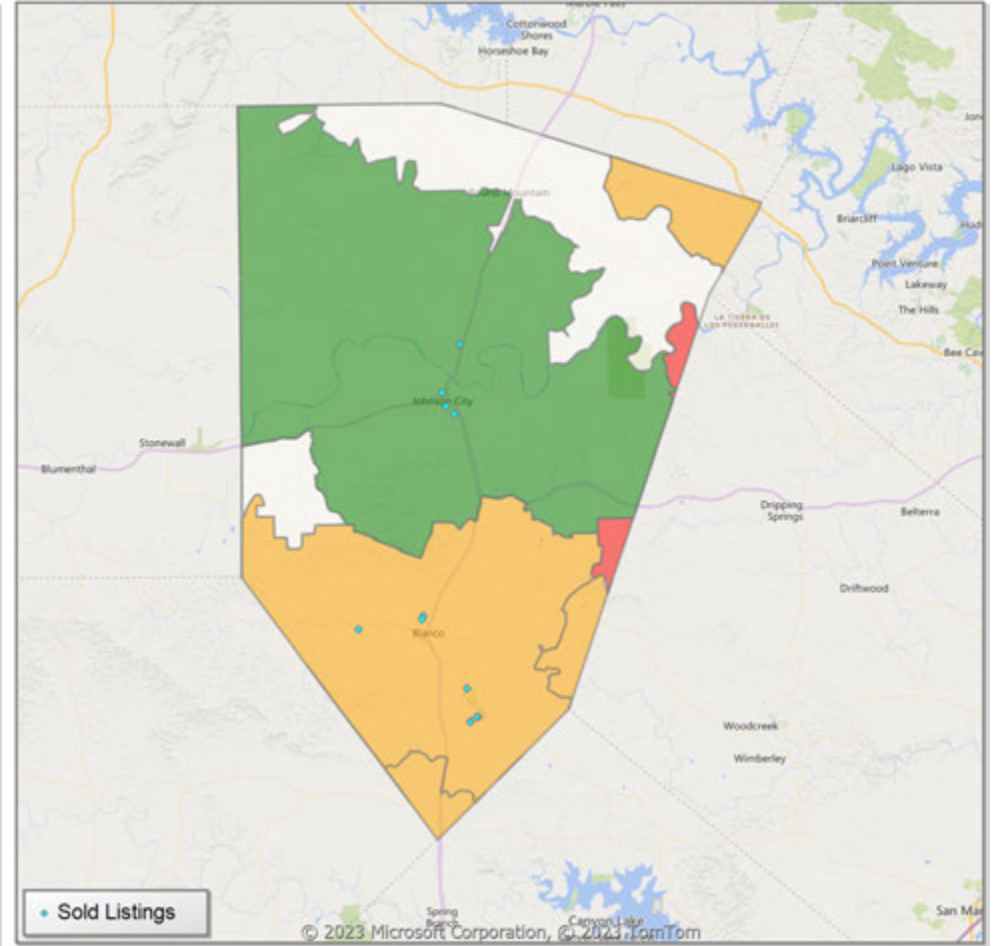
\* Closed Sale counts for most recent 3 months are Preliminary.

**Comparison By Zip Code\* in Blanco County**

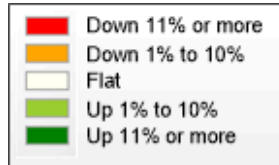
**Residential\*\* Closed Sales  
YoY Percentage Change**



**Residential\*\* Avg Close Price Per SqFt  
YoY Percentage Change**



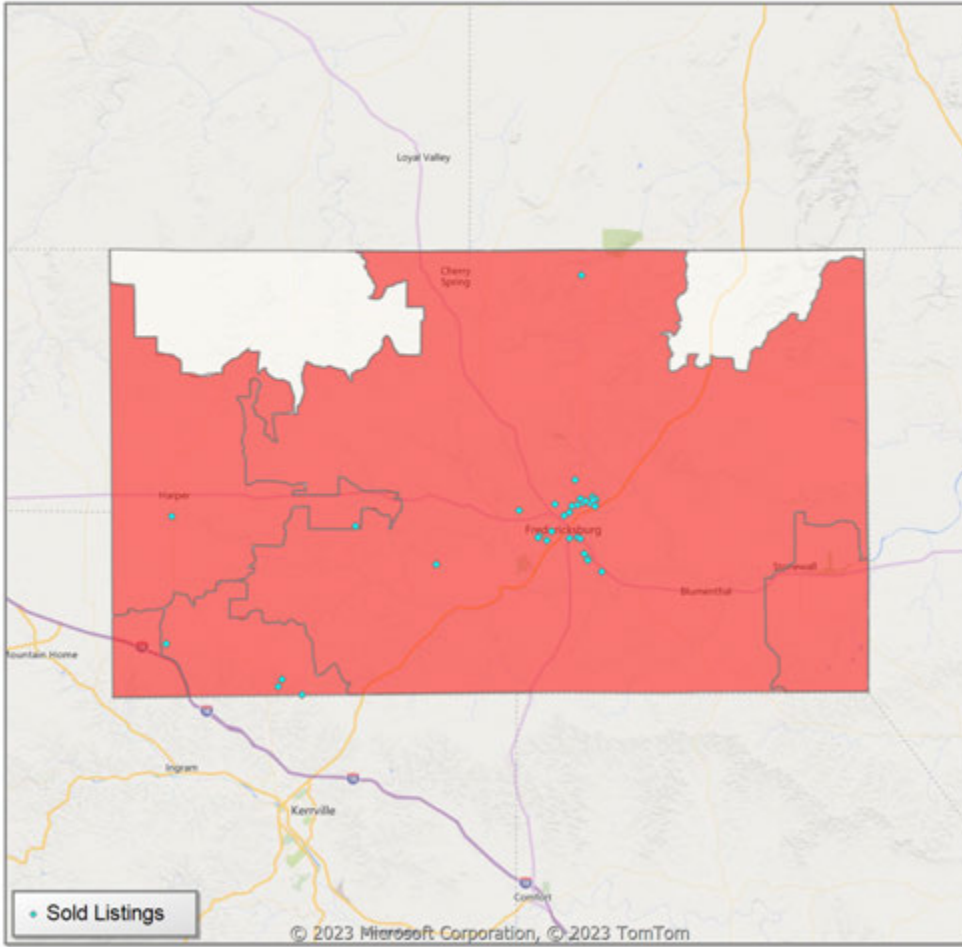
\* US Census Zip Code Tabulation Area  
\*\* Residential includes Single Family, Condominium and Townhouse.



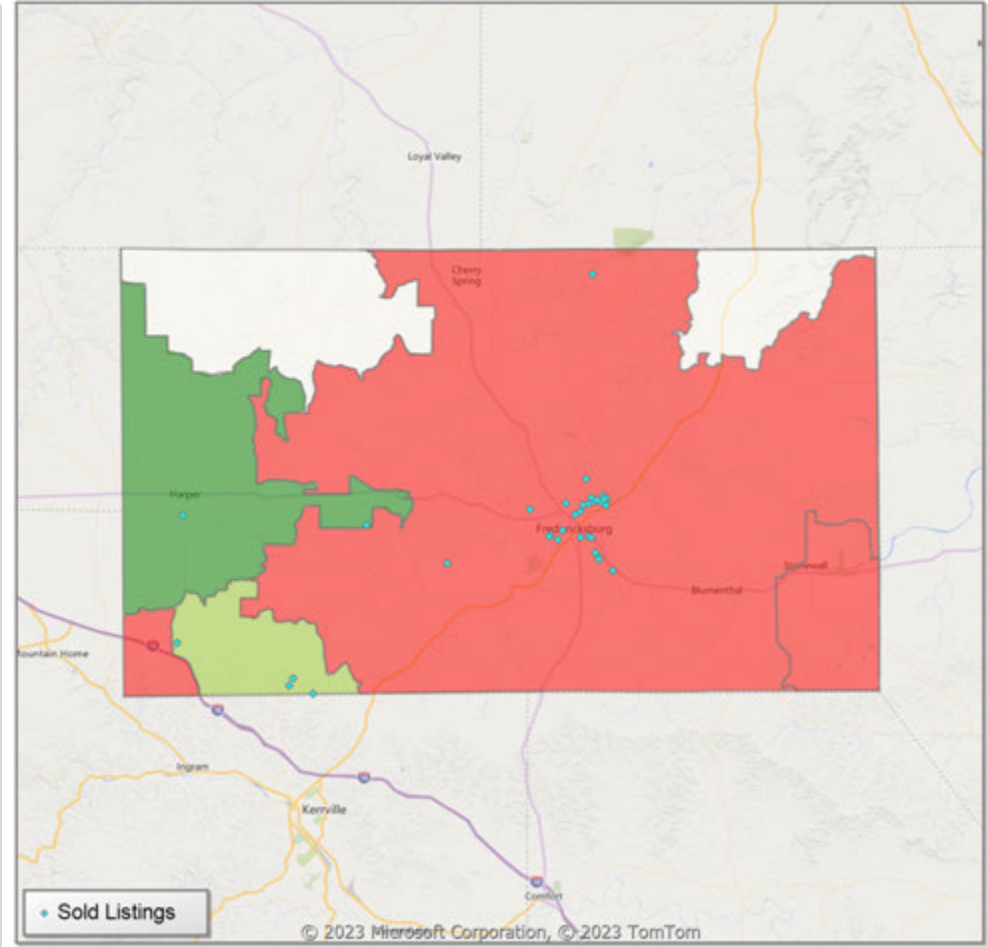


**Comparison By Zip Code\* in Gillespie County**

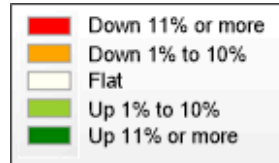
**Residential\*\* Closed Sales  
YoY Percentage Change**



**Residential\*\* Avg Close Price Per SqFt  
YoY Percentage Change**

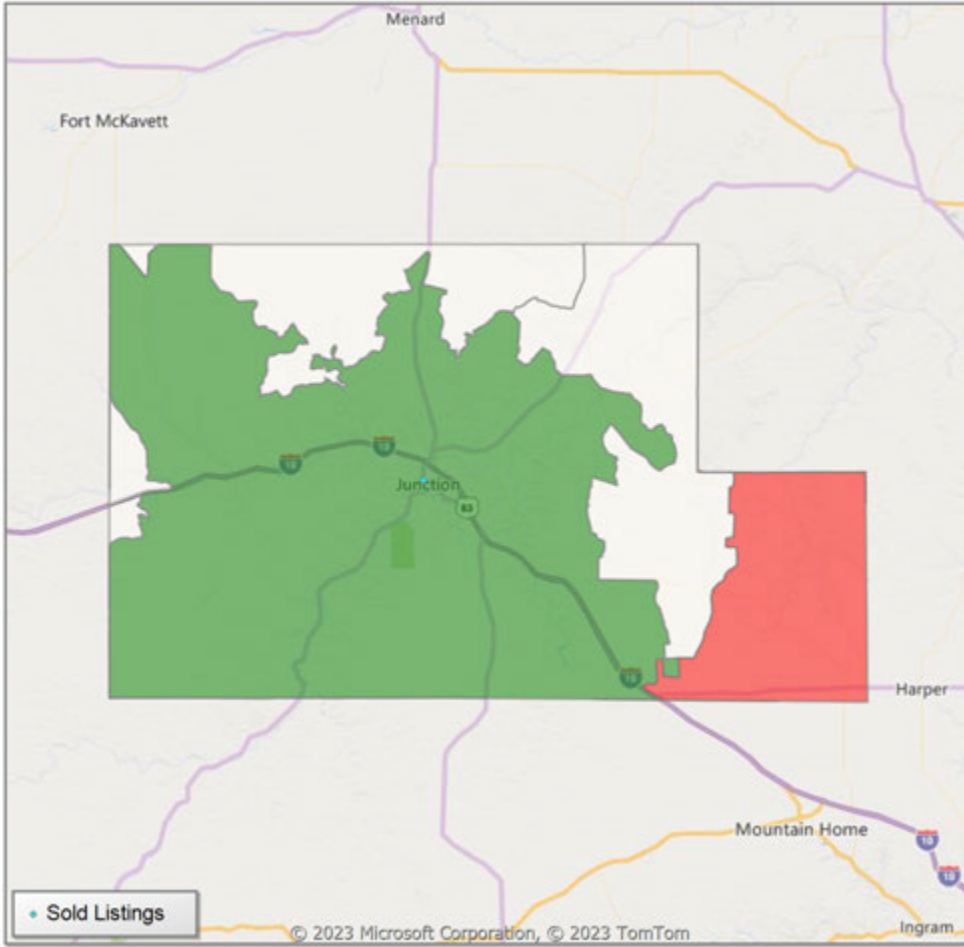


\* US Census Zip Code Tabulation Area  
\*\* Residential includes Single Family, Condominium and Townhouse.

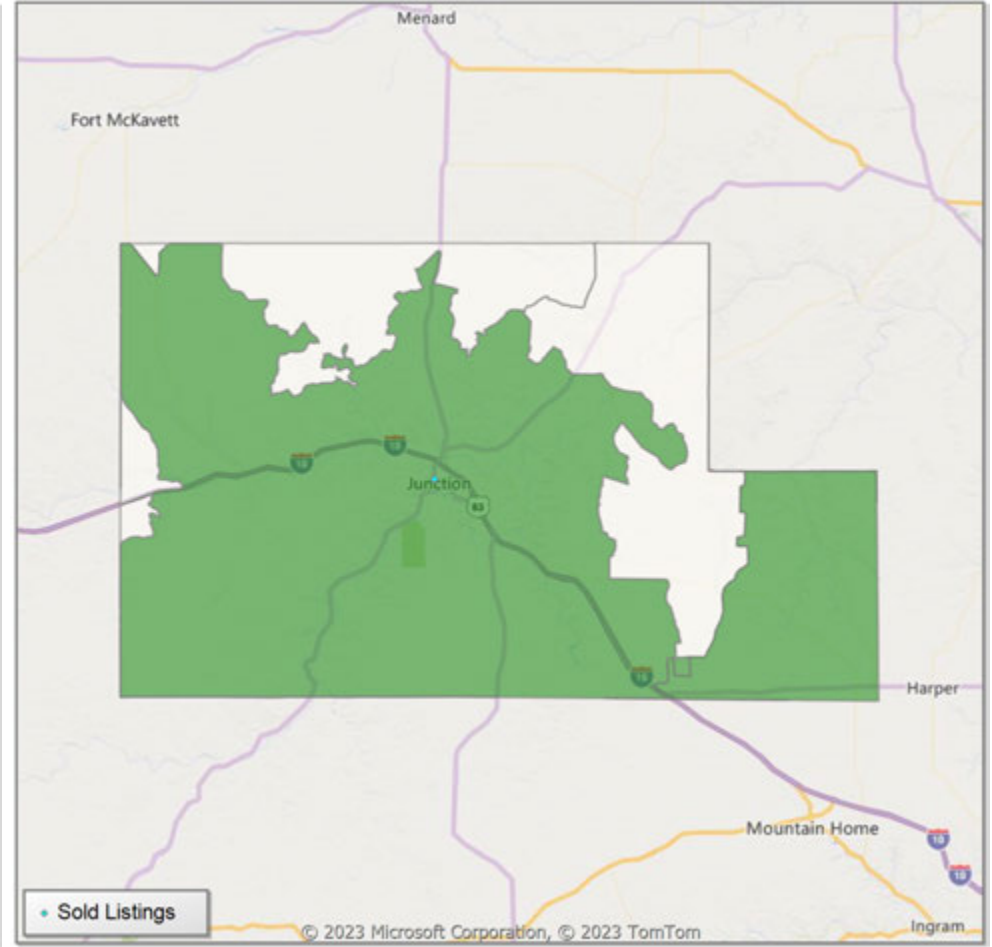


**Comparison By Zip Code\* in Kimble County**

**Residential\*\* Closed Sales  
YoY Percentage Change**

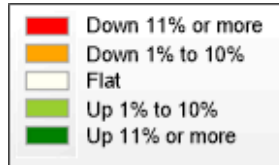


**Residential\*\* Avg Close Price Per SqFt  
YoY Percentage Change**



\* US Census Zip Code Tabulation Area

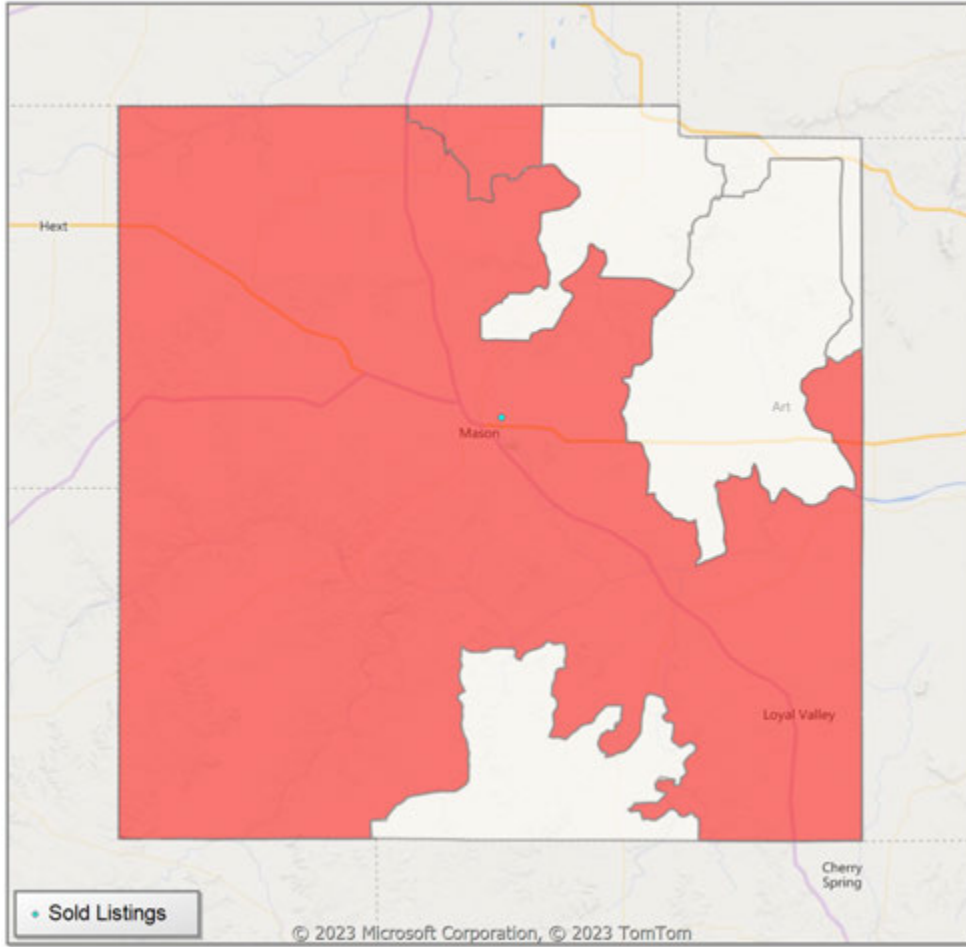
\*\* Residential includes Single Family, Condominium and Townhouse.



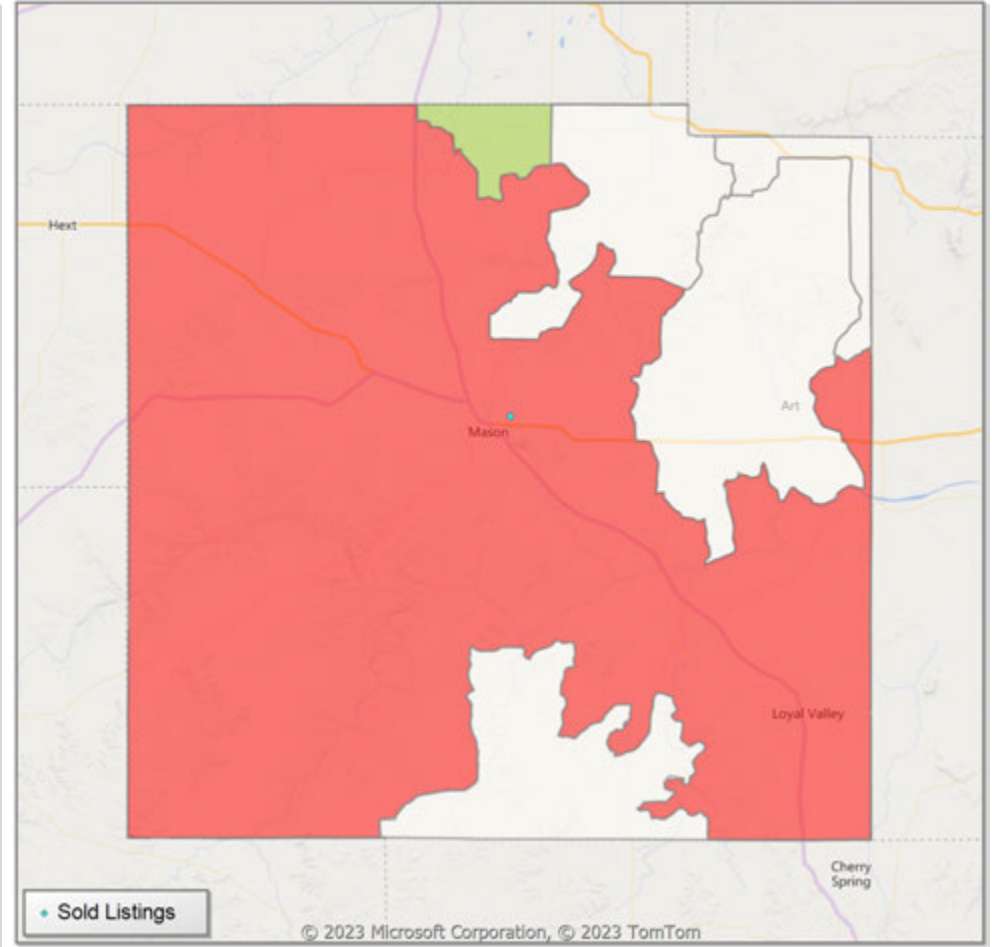


**Comparison By Zip Code\* in Mason County**

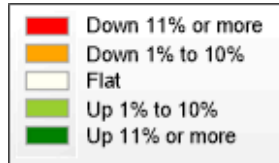
**Residential\*\* Closed Sales  
YoY Percentage Change**



**Residential\*\* Avg Close Price Per SqFt  
YoY Percentage Change**

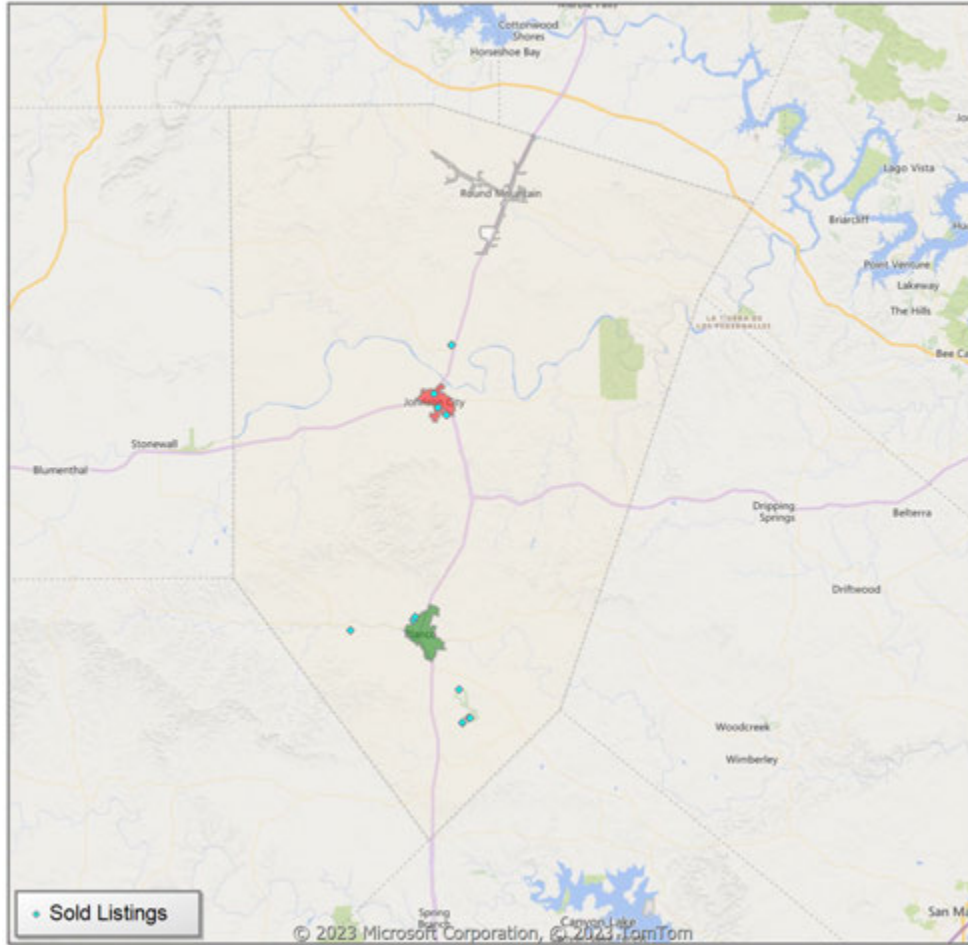


\* US Census Zip Code Tabulation Area  
\*\* Residential includes Single Family, Condominium and Townhouse.

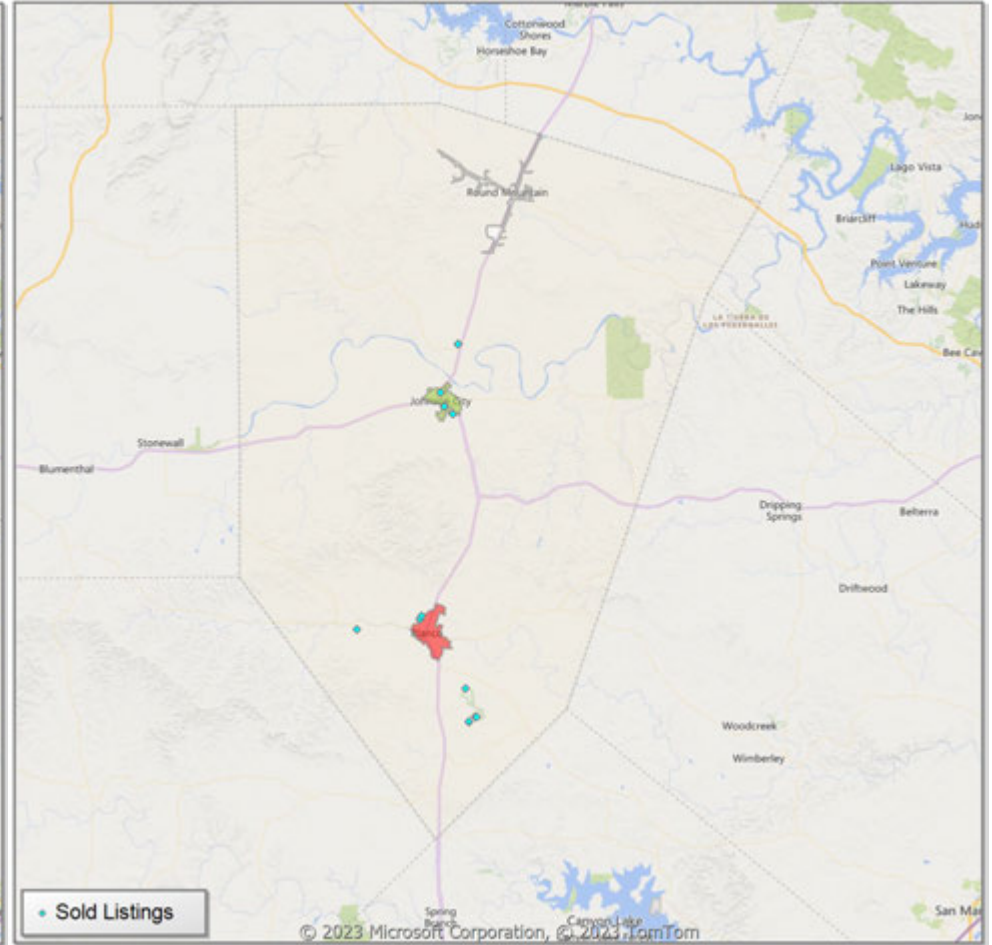


**Comparison By Local Market Area\* in Blanco County**

**Residential\*\* Closed Sales  
YoY Percentage Change**



**Residential\*\* Avg Close Price Per SqFt  
YoY Percentage Change**

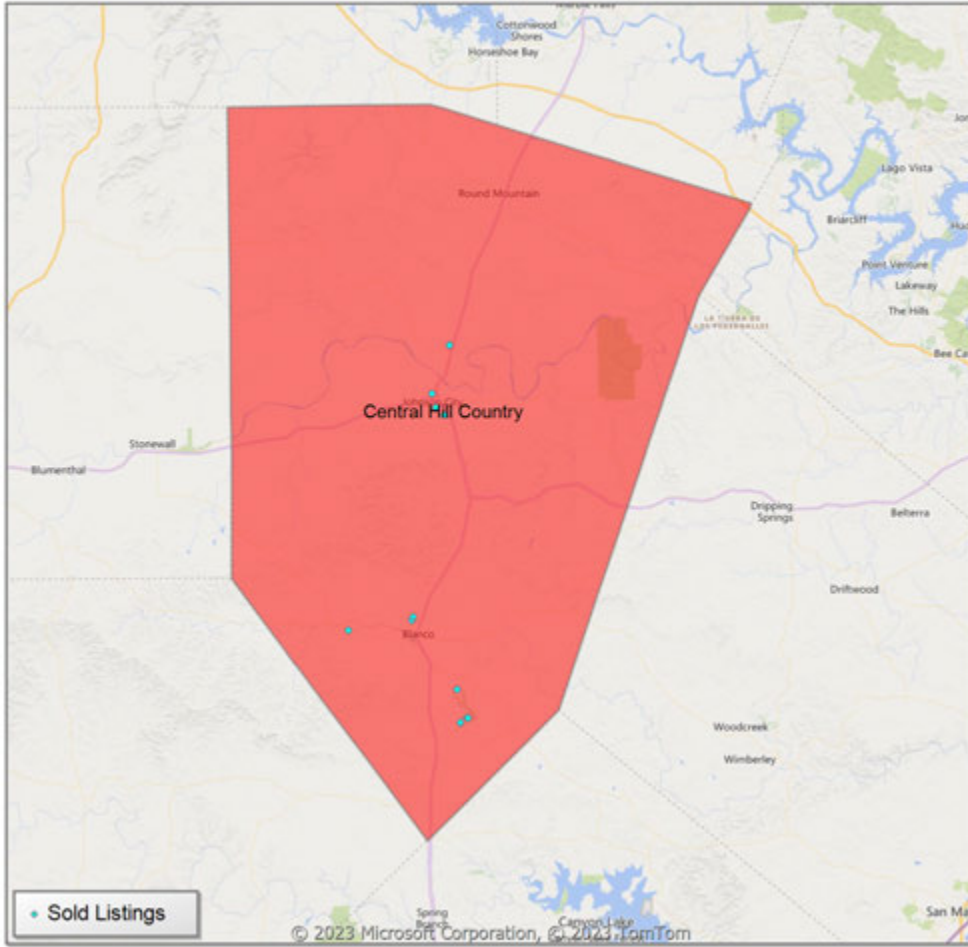


\* Census Place Group

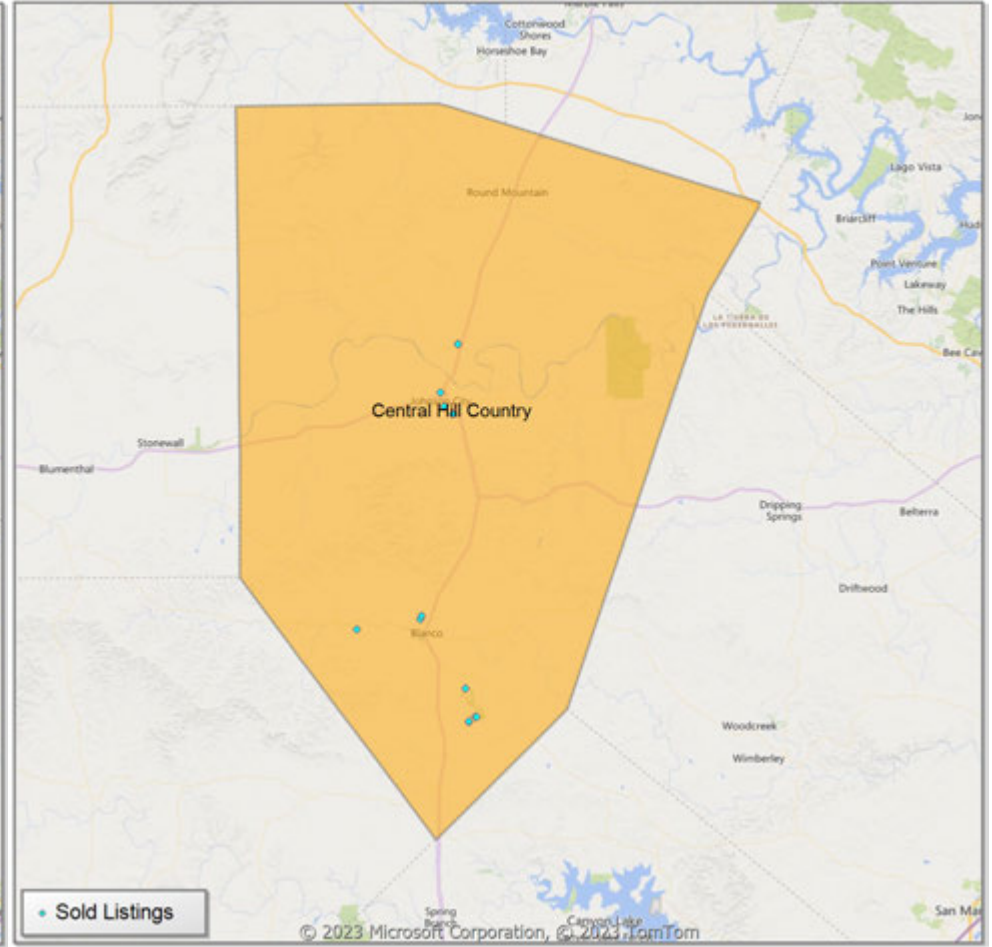
\*\* Residential includes Single Family, Condominium and Townhouse.

**Comparison By Local Market Area\* in Blanco County**

**Residential\*\* Closed Sales  
YoY Percentage Change**



**Residential\*\* Avg Close Price Per SqFt  
YoY Percentage Change**



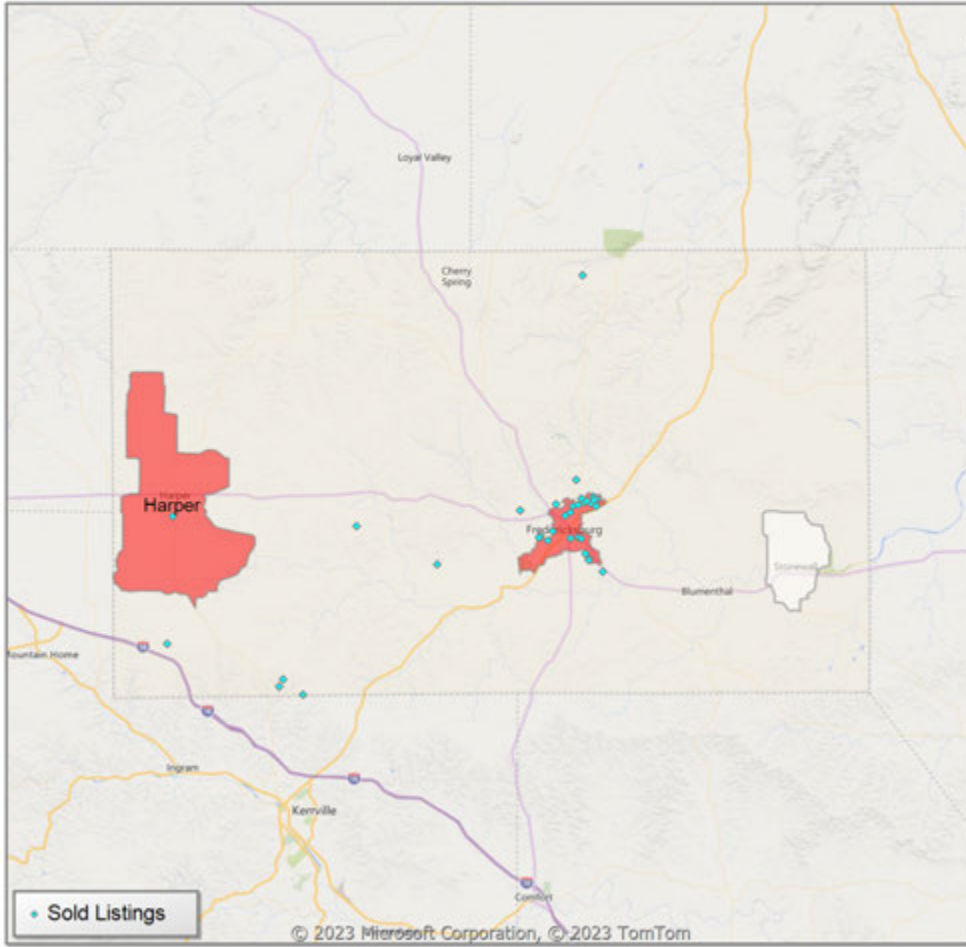
\* Custom Defined Market

\*\* Residential includes Single Family, Condominium and Townhouse.

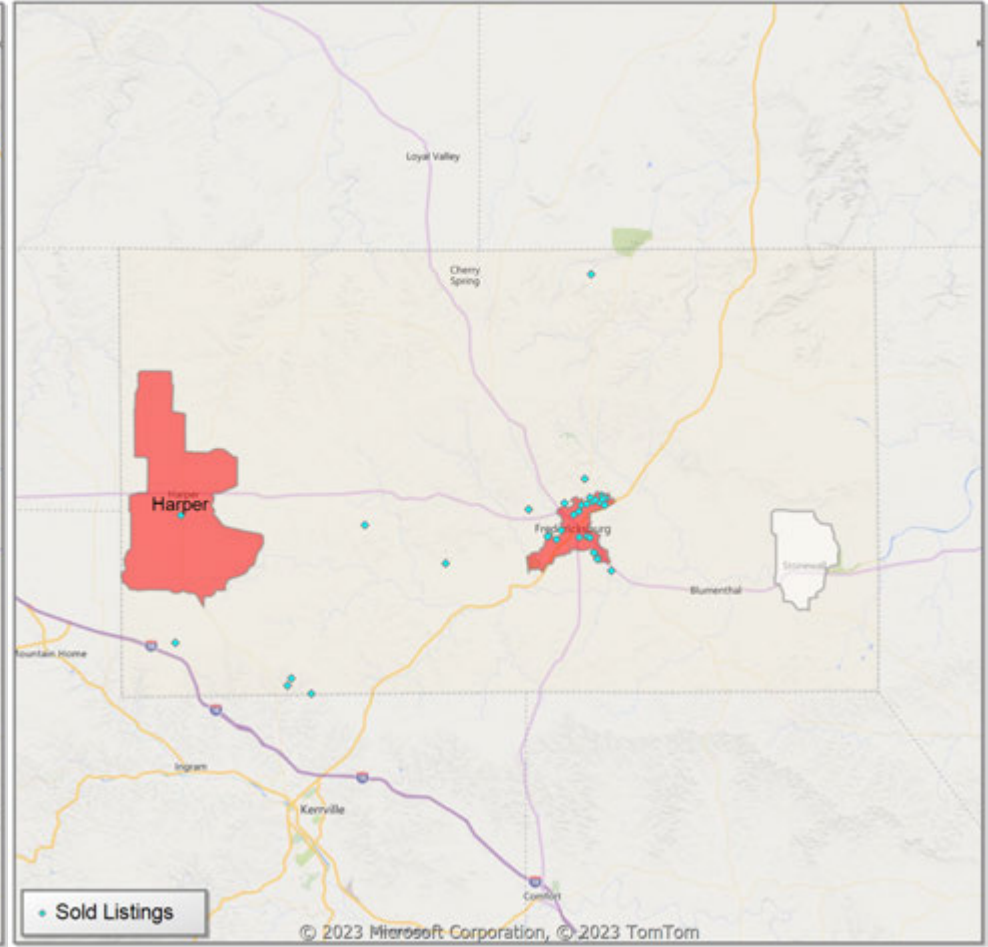


**Comparison By Local Market Area\* in Gillespie County**

**Residential\*\* Closed Sales  
YoY Percentage Change**



**Residential\*\* Avg Close Price Per SqFt  
YoY Percentage Change**

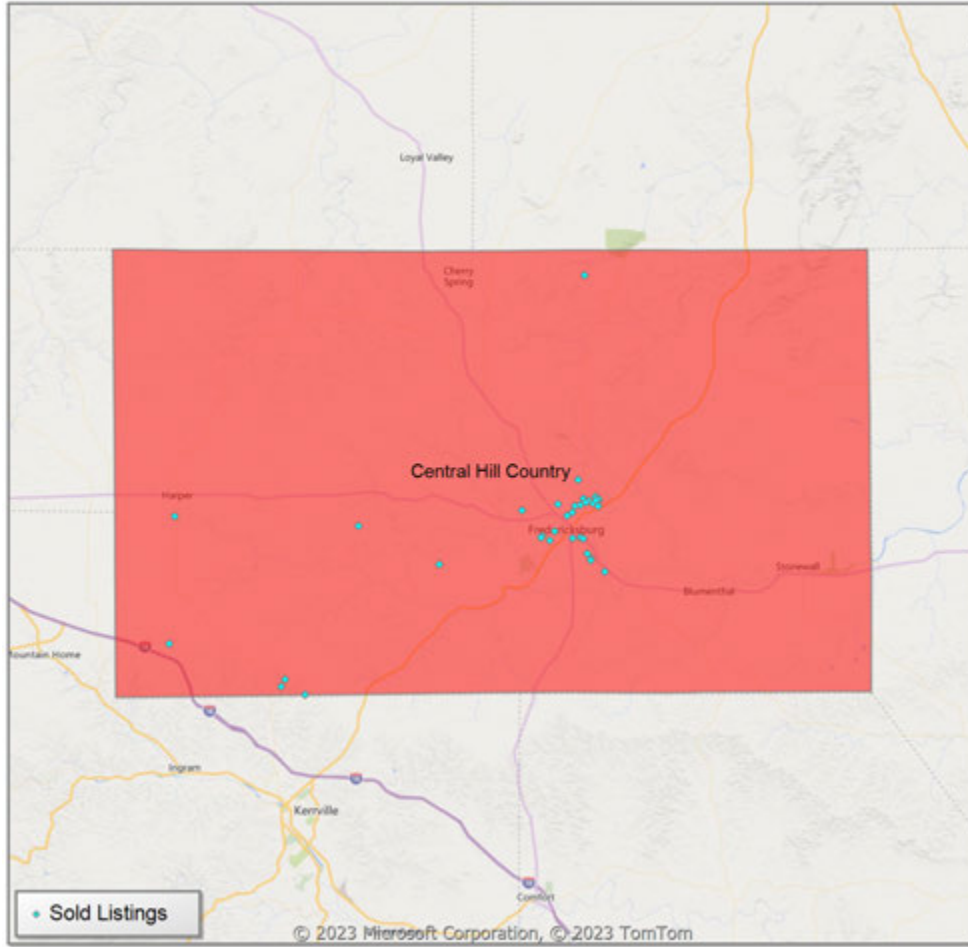


\* Census Place Group

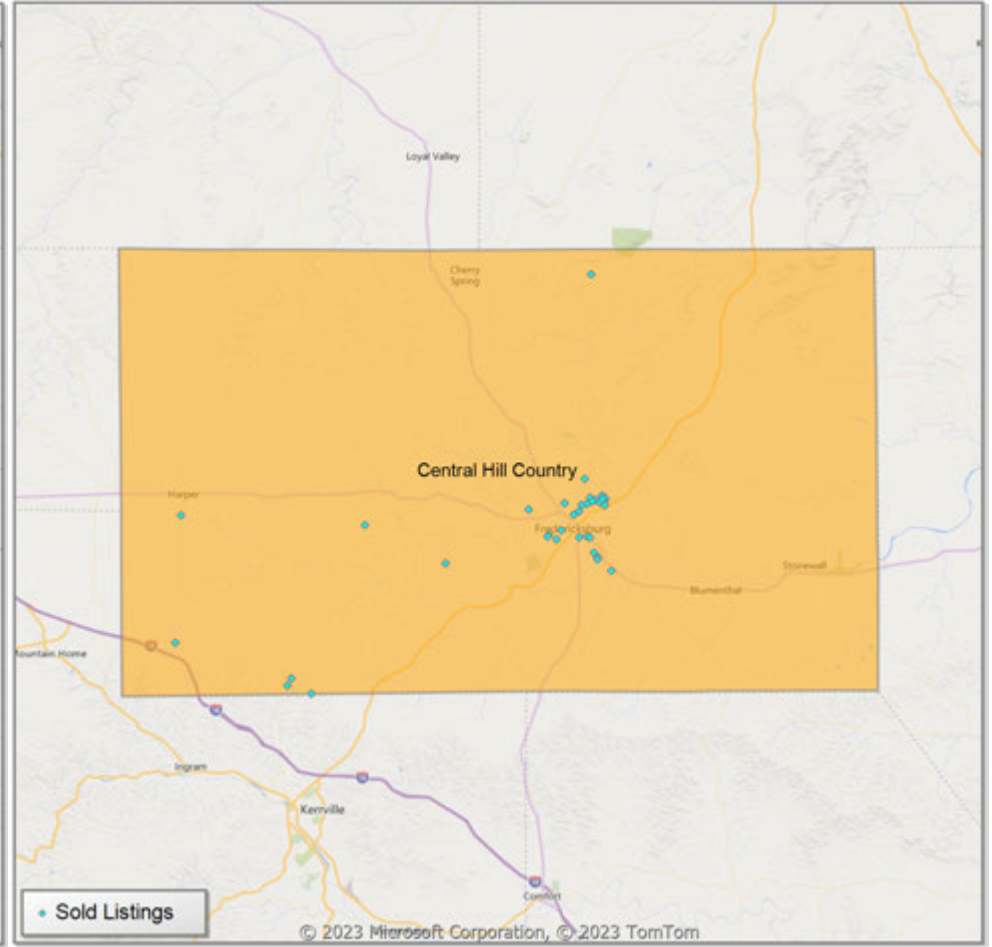
\*\* Residential includes Single Family, Condominium and Townhouse.

**Comparison By Local Market Area\* in Gillespie County**

**Residential\*\* Closed Sales  
YoY Percentage Change**



**Residential\*\* Avg Close Price Per SqFt  
YoY Percentage Change**

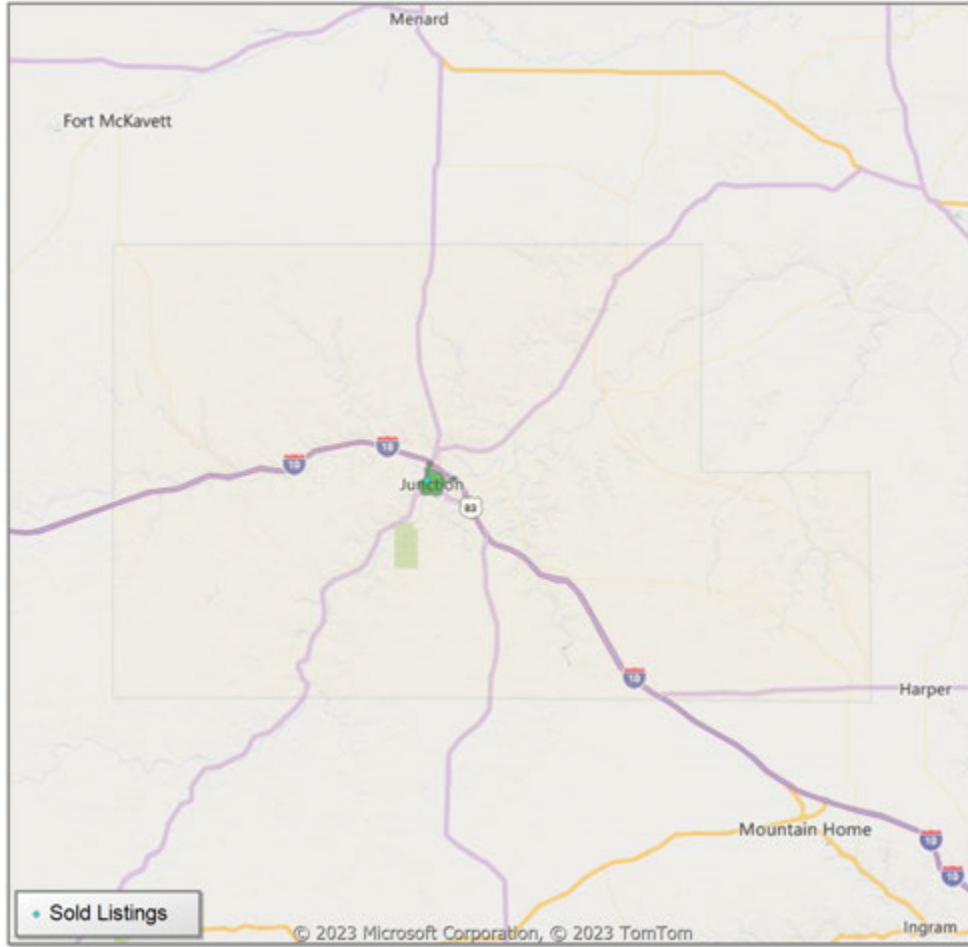


\* Custom Defined Market

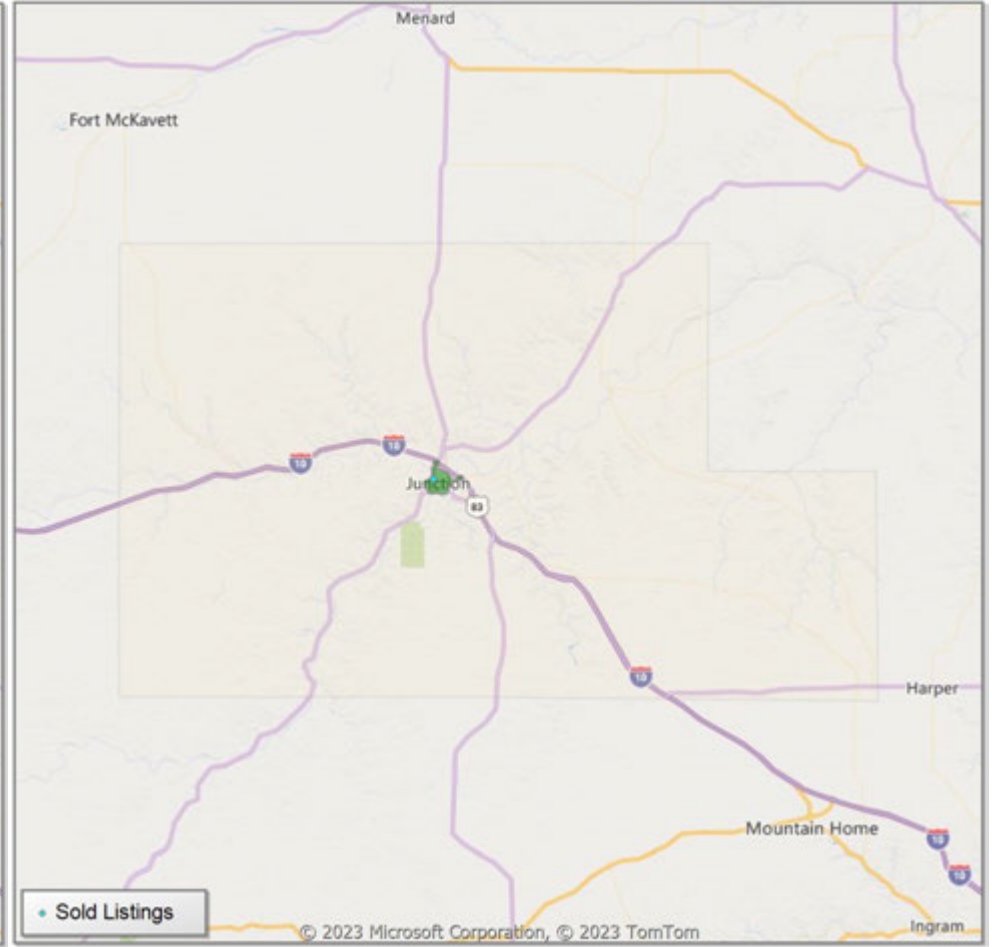
\*\* Residential includes Single Family, Condominium and Townhouse.

**Comparison By Local Market Area\* in Kimble County**

**Residential\*\* Closed Sales  
YoY Percentage Change**



**Residential\*\* Avg Close Price Per SqFt  
YoY Percentage Change**

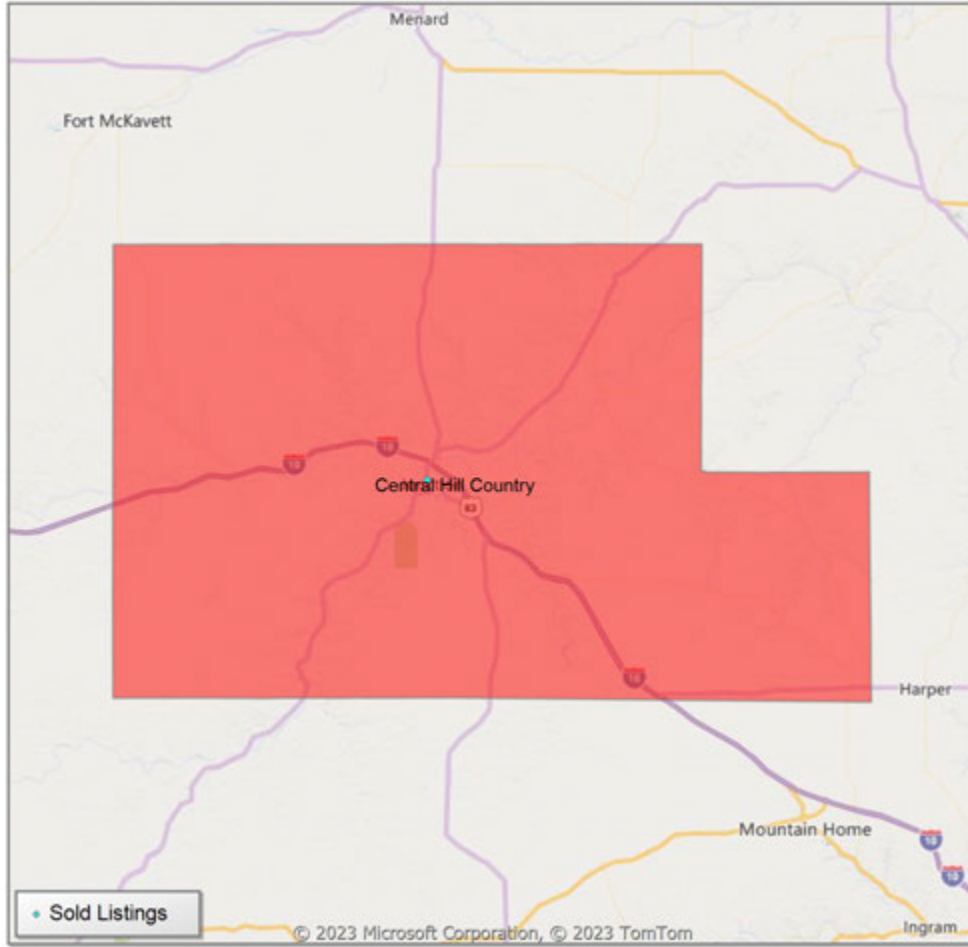


\* Census Place Group

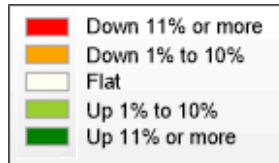
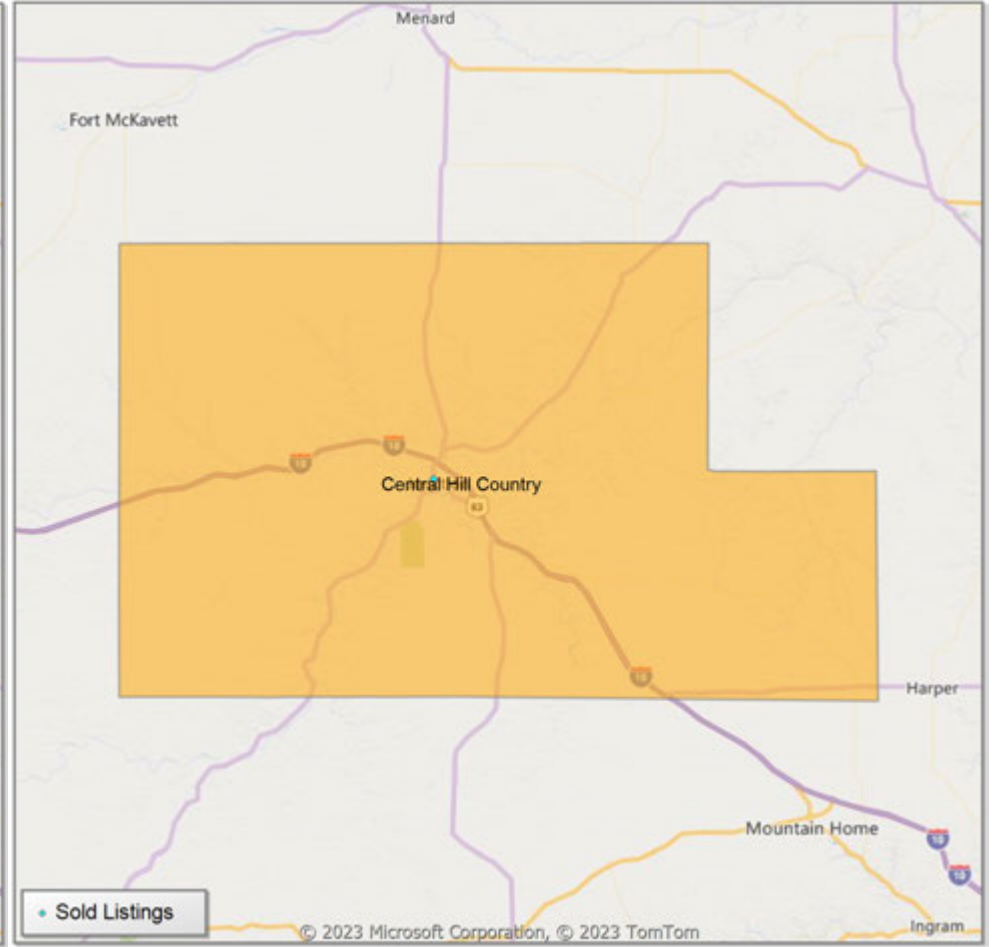
\*\* Residential includes Single Family, Condominium and Townhouse.

**Comparison By Local Market Area\* in Kimble County**

**Residential\*\* Closed Sales  
YoY Percentage Change**



**Residential\*\* Avg Close Price Per SqFt  
YoY Percentage Change**



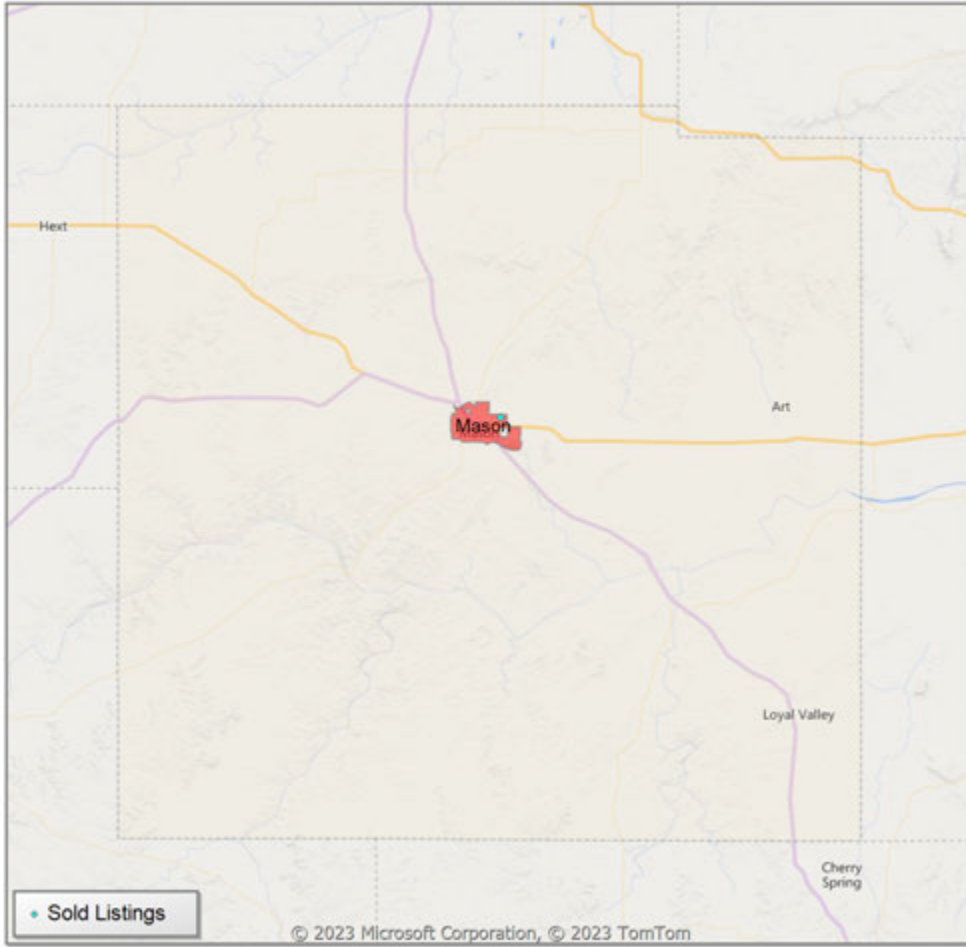
\* Custom Defined Market

\*\* Residential includes Single Family, Condominium and Townhouse.

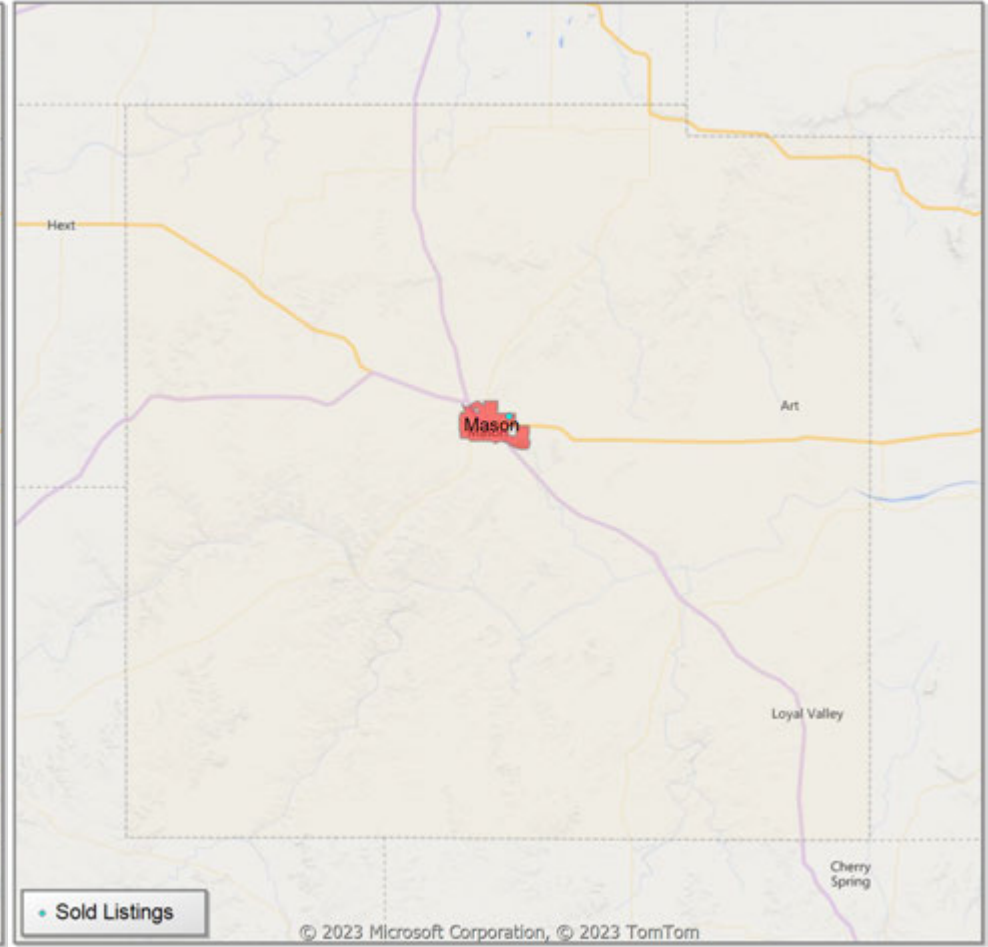


**Comparison By Local Market Area\* in Mason County**

**Residential\*\* Closed Sales  
YoY Percentage Change**



**Residential\*\* Avg Close Price Per SqFt  
YoY Percentage Change**

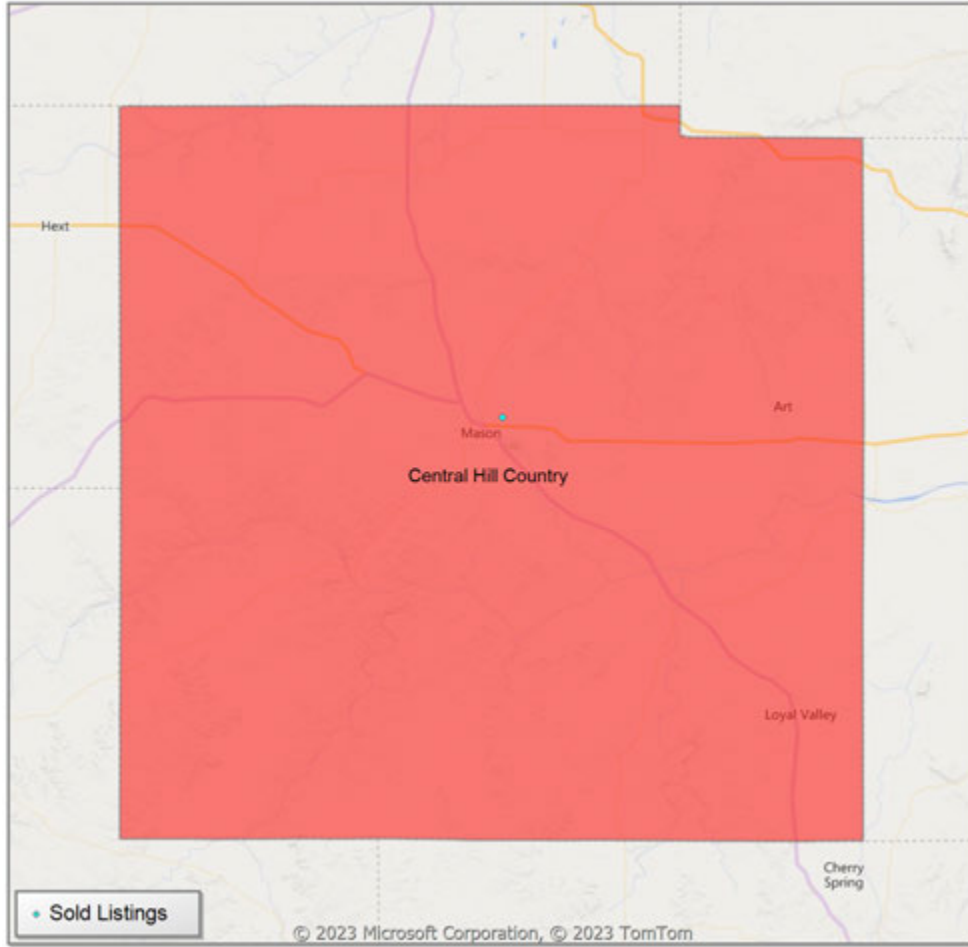


\* Census Place Group

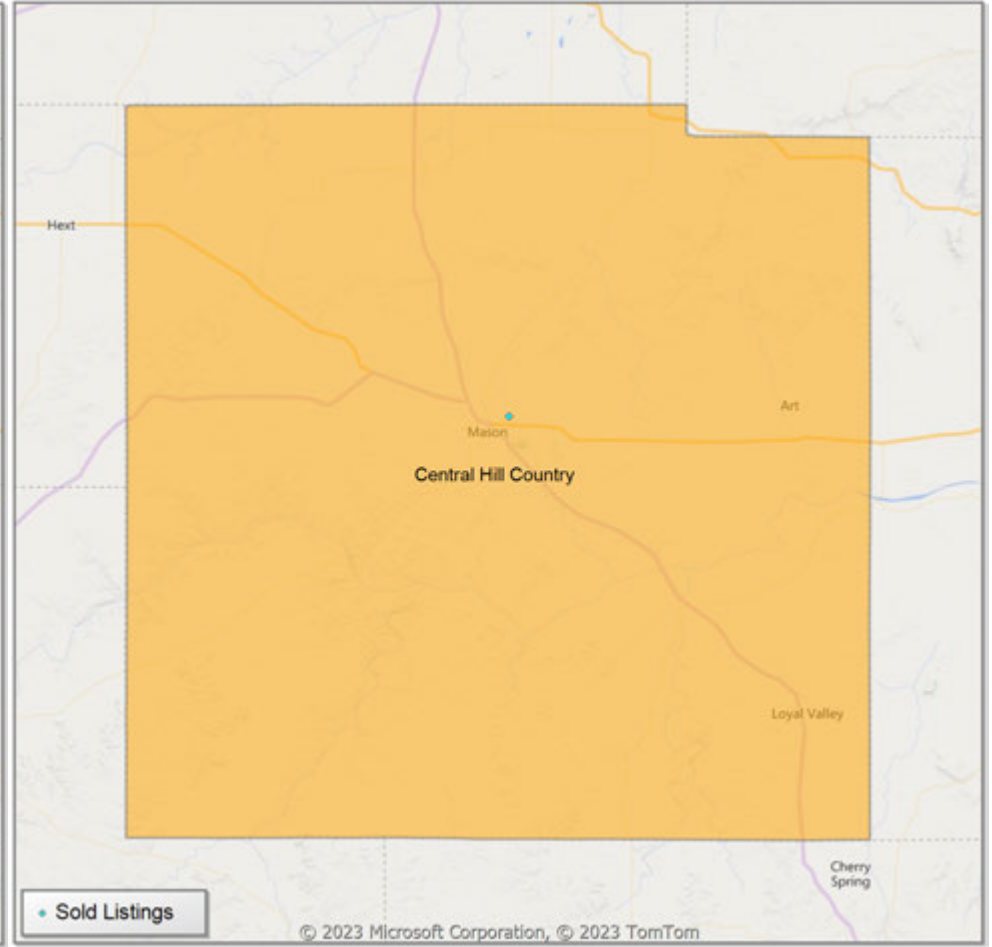
\*\* Residential includes Single Family, Condominium and Townhouse.

**Comparison By Local Market Area\* in Mason County**

**Residential\*\* Closed Sales  
YoY Percentage Change**



**Residential\*\* Avg Close Price Per SqFt  
YoY Percentage Change**



\* Custom Defined Market

\*\* Residential includes Single Family, Condominium and Townhouse.

Market Analysis By Local Market Area\*: Blanco

Property Type	Closed Sales**	YoY%	Dollar Volume	YoY%	Average Price	YoY%	Median Price	YoY%	Price/Sqft	YoY%	DOM	New Listings	Active Listings	Pending Sales	Months Inventory	Close To OLP
<b>All(New and Existing)</b>																
Residential (SF/COND/TH)	2	100.0%	\$735,000	200.0%	\$367,500	50.0%	\$367,500	50.0%	\$208	-12.6%	34	7	19	1	8.1	99.4%
YTD:	6	-33.3%	\$2,280,000	-23.9%	\$380,000	14.2%	\$397,500	20.8%	\$237	3.9%	93	20	15	5		95.3%
Single Family	2	100.0%	\$735,000	200.0%	\$367,500	50.0%	\$367,500	50.0%	\$208	-12.6%	34	7	19	1	8.4	99.4%
YTD:	6	-33.3%	\$2,280,000	-23.9%	\$380,000	14.2%	\$397,500	20.8%	\$237	3.9%	93	20	15	5		95.3%
Townhouse	-	0.0%	-	0.0%	-	0.0%	-	0.0%	-	0.0%	-	-	-	-	-	0.0%
YTD:	-	0.0%	-	0.0%	-	0.0%	-	0.0%	-	0.0%	-	-	-	-	-	0.0%
Condominium	-	0.0%	-	0.0%	-	0.0%	-	0.0%	-	0.0%	-	-	-	-	-	0.0%
YTD:	-	0.0%	-	0.0%	-	0.0%	-	0.0%	-	0.0%	-	-	-	-	-	0.0%
<b>Existing Home</b>																
Residential (SF/COND/TH)	2	100.0%	\$735,000	200.0%	\$367,500	50.0%	\$367,500	50.0%	\$208	-12.6%	34	6	17	1	7.8	99.4%
YTD:	5	-44.4%	\$1,831,000	-38.9%	\$366,200	10.0%	\$395,000	20.1%	\$235	2.9%	49	16	12	4		95.2%
Single Family	2	100.0%	\$735,000	200.0%	\$367,500	50.0%	\$367,500	50.0%	\$208	-12.6%	34	6	17	1	8.2	99.4%
YTD:	5	-44.4%	\$1,831,000	-38.9%	\$366,200	10.0%	\$395,000	20.1%	\$235	2.9%	49	16	12	4		95.2%
Townhouse	-	0.0%	-	0.0%	-	0.0%	-	0.0%	-	0.0%	-	-	-	-	-	0.0%
YTD:	-	0.0%	-	0.0%	-	0.0%	-	0.0%	-	0.0%	-	-	-	-	-	0.0%
Condominium	-	0.0%	-	0.0%	-	0.0%	-	0.0%	-	0.0%	-	-	-	-	-	0.0%
YTD:	-	0.0%	-	0.0%	-	0.0%	-	0.0%	-	0.0%	-	-	-	-	-	0.0%
<b>New Construction</b>																
Residential (SF/COND/TH)	-	0.0%	-	0.0%	-	0.0%	-	0.0%	-	0.0%	-	1	2	-	12.0	0.0%
YTD:	1	100.0%	\$449,000	100.0%	\$449,000	100.0%	\$449,000	100.0%	\$249	100.0%	316	4	2	1		95.7%
Single Family	-	0.0%	-	0.0%	-	0.0%	-	0.0%	-	0.0%	-	1	2	-	12.0	0.0%
YTD:	1	100.0%	\$449,000	100.0%	\$449,000	100.0%	\$449,000	100.0%	\$249	100.0%	316	4	2	1		95.7%
Townhouse	-	0.0%	-	0.0%	-	0.0%	-	0.0%	-	0.0%	-	-	-	-	-	0.0%
YTD:	-	0.0%	-	0.0%	-	0.0%	-	0.0%	-	0.0%	-	-	-	-	-	0.0%
Condominium	-	0.0%	-	0.0%	-	0.0%	-	0.0%	-	0.0%	-	-	-	-	-	0.0%
YTD:	-	0.0%	-	0.0%	-	0.0%	-	0.0%	-	0.0%	-	-	-	-	-	0.0%

\* Local Market Area Code: 91; Type: Census Place Group  
 \*\* Closed Sale counts for most recent 3 months are Preliminary.

Market Analysis By Local Market Area\*: Central Hill Country

Property Type	Closed Sales**	YoY%	Dollar Volume	YoY%	Average Price	YoY%	Median Price	YoY%	Price/Sqft	YoY%	DOM	New Listings	Active Listings	Pending Sales	Months Inventory	Close To OLP
<b>All(New and Existing)</b>																
Residential (SF/COND/TH)	55	-25.7%	\$37,283,869	-21.5%	\$677,889	5.6%	\$555,000	-5.1%	\$306	-8.6%	108	89	426	49	8.7	91.0%
YTD:	175	-40.9%	\$106,764,542	-39.1%	\$610,083	2.9%	\$502,000	0.4%	\$293	-5.7%	98	403	402	149		92.6%
Single Family	55	-25.7%	\$37,283,869	-21.5%	\$677,889	5.6%	\$555,000	-5.1%	\$306	-8.6%	108	89	422	49	8.6	91.0%
YTD:	175	-40.9%	\$106,764,542	-39.1%	\$610,083	2.9%	\$502,000	0.4%	\$293	-5.7%	98	402	398	149		92.6%
Townhouse	-	0.0%	-	0.0%	-	0.0%	-	0.0%	-	0.0%	-	-	4	-	-	0.0%
YTD:	-	0.0%	-	0.0%	-	0.0%	-	0.0%	-	0.0%	-	1	3	-	-	0.0%
Condominium	-	0.0%	-	0.0%	-	0.0%	-	0.0%	-	0.0%	-	-	-	-	-	0.0%
YTD:	-	0.0%	-	0.0%	-	0.0%	-	0.0%	-	0.0%	-	-	-	-	-	0.0%
<b>Existing Home</b>																
Residential (SF/COND/TH)	45	-26.2%	\$32,068,503	-22.3%	\$712,633	5.3%	\$629,000	-0.2%	\$317	-9.7%	119	68	319	37	8.9	89.8%
YTD:	128	-43.9%	\$82,196,836	-43.1%	\$642,163	1.5%	\$525,000	-4.0%	\$304	-8.5%	104	305	288	106		90.9%
Single Family	45	-26.2%	\$32,068,503	-22.3%	\$712,633	5.3%	\$629,000	-0.2%	\$317	-9.7%	119	68	315	37	8.8	89.8%
YTD:	128	-43.9%	\$82,196,836	-43.1%	\$642,163	1.5%	\$525,000	-4.0%	\$304	-8.5%	104	304	285	106		90.9%
Townhouse	-	0.0%	-	0.0%	-	0.0%	-	0.0%	-	0.0%	-	-	4	-	-	0.0%
YTD:	-	0.0%	-	0.0%	-	0.0%	-	0.0%	-	0.0%	-	1	3	-	-	0.0%
Condominium	-	0.0%	-	0.0%	-	0.0%	-	0.0%	-	0.0%	-	-	-	-	-	0.0%
YTD:	-	0.0%	-	0.0%	-	0.0%	-	0.0%	-	0.0%	-	-	-	-	-	0.0%
<b>New Construction</b>																
Residential (SF/COND/TH)	11	-15.4%	\$5,851,560	-6.0%	\$531,960	11.1%	\$479,900	7.6%	\$258	-0.6%	66	21	107	12	8.1	95.7%
YTD:	47	-30.9%	\$24,576,772	-21.0%	\$522,910	14.3%	\$470,500	10.7%	\$264	10.8%	82	98	113	43		96.7%
Single Family	11	-15.4%	\$5,851,560	-6.0%	\$531,960	11.1%	\$479,900	7.6%	\$258	-0.6%	66	21	107	12	8.1	95.7%
YTD:	47	-30.9%	\$24,576,772	-21.0%	\$522,910	14.3%	\$470,500	10.7%	\$264	10.8%	82	98	113	43		96.7%
Townhouse	-	0.0%	-	0.0%	-	0.0%	-	0.0%	-	0.0%	-	-	-	-	-	0.0%
YTD:	-	0.0%	-	0.0%	-	0.0%	-	0.0%	-	0.0%	-	-	-	-	-	0.0%
Condominium	-	0.0%	-	0.0%	-	0.0%	-	0.0%	-	0.0%	-	-	-	-	-	0.0%
YTD:	-	0.0%	-	0.0%	-	0.0%	-	0.0%	-	0.0%	-	-	-	-	-	0.0%

\* Local Market Area Code: CHC; Type: Custom Defined Market

\*\* Closed Sale counts for most recent 3 months are Preliminary.

Market Analysis By Local Market Area\*: Fredericksburg

Property Type	Closed Sales**	YoY%	Dollar Volume	YoY%	Average Price	YoY%	Median Price	YoY%	Price/Sqft	YoY%	DOM	New Listings	Active Listings	Pending Sales	Months Inventory	Close To OLP
<b>All(New and Existing)</b>																
Residential (SF/COND/TH)	16	-44.8%	\$9,635,778	-54.4%	\$602,236	-17.4%	\$555,000	-14.6%	\$354	-16.4%	127	30	121	21	7.2	92.4%
YTD:	51	-48.0%	\$31,732,475	-48.0%	\$622,205	-0.1%	\$555,000	1.0%	\$337	-8.0%	110	126	114	46		92.4%
Single Family	16	-44.8%	\$9,635,778	-54.4%	\$602,236	-17.4%	\$555,000	-14.6%	\$354	-16.4%	127	30	117	21	6.9	92.4%
YTD:	51	-48.0%	\$31,732,475	-48.0%	\$622,205	-0.1%	\$555,000	1.0%	\$337	-8.0%	110	125	111	46		92.4%
Townhouse	-	0.0%	-	0.0%	-	0.0%	-	0.0%	-	0.0%	-	-	4	-	-	0.0%
YTD:	-	0.0%	-	0.0%	-	0.0%	-	0.0%	-	0.0%	-	1	3	-	-	0.0%
Condominium	-	0.0%	-	0.0%	-	0.0%	-	0.0%	-	0.0%	-	-	-	-	-	0.0%
YTD:	-	0.0%	-	0.0%	-	0.0%	-	0.0%	-	0.0%	-	-	-	-	-	0.0%
<b>Existing Home</b>																
Residential (SF/COND/TH)	14	-41.7%	\$8,525,778	-55.2%	\$608,984	-23.3%	\$515,000	-24.9%	\$368	-20.5%	136	29	113	20	8.3	91.7%
YTD:	46	-37.0%	\$28,714,575	-41.7%	\$624,230	-7.5%	\$552,000	-11.0%	\$344	-15.9%	114	118	105	42		91.8%
Single Family	14	-41.7%	\$8,525,778	-55.2%	\$608,984	-23.3%	\$515,000	-24.9%	\$368	-20.5%	136	29	109	20	8.0	91.7%
YTD:	46	-37.0%	\$28,714,575	-41.7%	\$624,230	-7.5%	\$552,000	-11.0%	\$344	-15.9%	114	117	101	42		91.8%
Townhouse	-	0.0%	-	0.0%	-	0.0%	-	0.0%	-	0.0%	-	-	4	-	-	0.0%
YTD:	-	0.0%	-	0.0%	-	0.0%	-	0.0%	-	0.0%	-	1	3	-	-	0.0%
Condominium	-	0.0%	-	0.0%	-	0.0%	-	0.0%	-	0.0%	-	-	-	-	-	0.0%
YTD:	-	0.0%	-	0.0%	-	0.0%	-	0.0%	-	0.0%	-	-	-	-	-	0.0%
<b>New Construction</b>																
Residential (SF/COND/TH)	2	-60.0%	\$1,110,000	-47.0%	\$555,000	32.4%	\$555,000	24.4%	\$258	9.9%	66	1	8	1	2.5	97.0%
YTD:	5	-80.0%	\$3,017,900	-74.4%	\$603,580	28.0%	\$555,000	23.2%	\$273	13.1%	77	8	9	4		97.4%
Single Family	2	-60.0%	\$1,110,000	-47.0%	\$555,000	32.4%	\$555,000	24.4%	\$258	9.9%	66	1	8	1	2.5	97.0%
YTD:	5	-80.0%	\$3,017,900	-74.4%	\$603,580	28.0%	\$555,000	23.2%	\$273	13.1%	77	8	9	4		97.4%
Townhouse	-	0.0%	-	0.0%	-	0.0%	-	0.0%	-	0.0%	-	-	-	-	-	0.0%
YTD:	-	0.0%	-	0.0%	-	0.0%	-	0.0%	-	0.0%	-	-	-	-	-	0.0%
Condominium	-	0.0%	-	0.0%	-	0.0%	-	0.0%	-	0.0%	-	-	-	-	-	0.0%
YTD:	-	0.0%	-	0.0%	-	0.0%	-	0.0%	-	0.0%	-	-	-	-	-	0.0%

\* Local Market Area Code: 335; Type: Census Place Group  
 \*\* Closed Sale counts for most recent 3 months are Preliminary.

Market Analysis By Local Market Area\*: Harper

Property Type	Closed Sales**	YoY%	Dollar Volume	YoY%	Average Price	YoY%	Median Price	YoY%	Price/Sqft	YoY%	DOM	New Listings	Active Listings	Pending Sales	Months Inventory	Close To OLP
<b>All(New and Existing)</b>																
Residential (SF/COND/TH)	1	-50.0%	\$306,000	-71.9%	\$306,000	-43.7%	\$306,000	-43.7%	\$202	-18.4%	25	4	24	-	19.2	99.0%
YTD:	5	-37.5%	\$1,809,900	-33.2%	\$361,980	6.9%	\$363,000	25.2%	\$234	30.7%	97	18	19	5		90.1%
Single Family	1	-50.0%	\$306,000	-71.9%	\$306,000	-43.7%	\$306,000	-43.7%	\$202	-18.4%	25	4	24	-	19.2	99.0%
YTD:	5	-37.5%	\$1,809,900	-33.2%	\$361,980	6.9%	\$363,000	25.2%	\$234	30.7%	97	18	19	5		90.1%
Townhouse	-	0.0%	-	0.0%	-	0.0%	-	0.0%	-	0.0%	-	-	-	-	-	0.0%
YTD:	-	0.0%	-	0.0%	-	0.0%	-	0.0%	-	0.0%	-	-	-	-	-	0.0%
Condominium	-	0.0%	-	0.0%	-	0.0%	-	0.0%	-	0.0%	-	-	-	-	-	0.0%
YTD:	-	0.0%	-	0.0%	-	0.0%	-	0.0%	-	0.0%	-	-	-	-	-	0.0%
<b>Existing Home</b>																
Residential (SF/COND/TH)	1	0.0%	\$306,000	-11.3%	\$306,000	-11.3%	\$306,000	-11.3%	\$202	36.2%	25	3	17	-	14.6	99.0%
YTD:	4	-42.9%	\$1,446,900	-26.4%	\$361,725	28.8%	\$340,450	28.5%	\$230	47.8%	74	14	14	4		89.1%
Single Family	1	0.0%	\$306,000	-11.3%	\$306,000	-11.3%	\$306,000	-11.3%	\$202	36.2%	25	3	17	-	14.6	99.0%
YTD:	4	-42.9%	\$1,446,900	-26.4%	\$361,725	28.8%	\$340,450	28.5%	\$230	47.8%	74	14	14	4		89.1%
Townhouse	-	0.0%	-	0.0%	-	0.0%	-	0.0%	-	0.0%	-	-	-	-	-	0.0%
YTD:	-	0.0%	-	0.0%	-	0.0%	-	0.0%	-	0.0%	-	-	-	-	-	0.0%
Condominium	-	0.0%	-	0.0%	-	0.0%	-	0.0%	-	0.0%	-	-	-	-	-	0.0%
YTD:	-	0.0%	-	0.0%	-	0.0%	-	0.0%	-	0.0%	-	-	-	-	-	0.0%
<b>New Construction</b>																
Residential (SF/COND/TH)	-	-100.0%	-	-100.0%	-	-100.0%	-	-100.0%	-	-100.0%	-	1	7	-	84.0	0.0%
YTD:	1	0.0%	\$363,000	-51.1%	\$363,000	-51.1%	\$363,000	-51.1%	\$252	-27.1%	191	4	5	1		93.2%
Single Family	-	-100.0%	-	-100.0%	-	-100.0%	-	-100.0%	-	-100.0%	-	1	7	-	84.0	0.0%
YTD:	1	0.0%	\$363,000	-51.1%	\$363,000	-51.1%	\$363,000	-51.1%	\$252	-27.1%	191	4	5	1		93.2%
Townhouse	-	0.0%	-	0.0%	-	0.0%	-	0.0%	-	0.0%	-	-	-	-	-	0.0%
YTD:	-	0.0%	-	0.0%	-	0.0%	-	0.0%	-	0.0%	-	-	-	-	-	0.0%
Condominium	-	0.0%	-	0.0%	-	0.0%	-	0.0%	-	0.0%	-	-	-	-	-	0.0%
YTD:	-	0.0%	-	0.0%	-	0.0%	-	0.0%	-	0.0%	-	-	-	-	-	0.0%

\* Local Market Area Code: 404; Type: Census Place Group  
 \*\* Closed Sale counts for most recent 3 months are Preliminary.

Market Analysis By Local Market Area\*: Johnson City

Property Type	Closed Sales**	YoY%	Dollar Volume	YoY%	Average Price	YoY%	Median Price	YoY%	Price/Sqft	YoY%	DOM	New Listings	Active Listings	Pending Sales	Months Inventory	Close To OLP
<b>All(New and Existing)</b>																
Residential (SF/COND/TH)	2	-50.0%	\$855,000	-44.1%	\$427,500	11.8%	\$427,500	13.3%	\$235	6.1%	85	3	12	2	11.1	91.7%
YTD:	5	-66.7%	\$2,100,900	-62.8%	\$420,180	11.6%	\$390,000	13.0%	\$238	10.6%	90	14	11	6		88.4%
Single Family	2	-50.0%	\$855,000	-44.1%	\$427,500	11.8%	\$427,500	13.3%	\$235	6.1%	85	3	12	2	11.1	91.7%
YTD:	5	-66.7%	\$2,100,900	-62.8%	\$420,180	11.6%	\$390,000	13.0%	\$238	10.6%	90	14	11	6		88.4%
Townhouse	-	0.0%	-	0.0%	-	0.0%	-	0.0%	-	0.0%	-	-	-	-	-	0.0%
YTD:	-	0.0%	-	0.0%	-	0.0%	-	0.0%	-	0.0%	-	-	-	-	-	0.0%
Condominium	-	0.0%	-	0.0%	-	0.0%	-	0.0%	-	0.0%	-	-	-	-	-	0.0%
YTD:	-	0.0%	-	0.0%	-	0.0%	-	0.0%	-	0.0%	-	-	-	-	-	0.0%
<b>Existing Home</b>																
Residential (SF/COND/TH)	2	-50.0%	\$855,000	-44.1%	\$427,500	11.8%	\$427,500	13.3%	\$235	6.1%	85	3	10	2	10.0	91.7%
YTD:	5	-61.5%	\$2,100,900	-58.3%	\$420,180	8.5%	\$390,000	-12.4%	\$238	11.6%	90	12	10	6		88.4%
Single Family	2	-50.0%	\$855,000	-44.1%	\$427,500	11.8%	\$427,500	13.3%	\$235	6.1%	85	3	10	2	10.0	91.7%
YTD:	5	-61.5%	\$2,100,900	-58.3%	\$420,180	8.5%	\$390,000	-12.4%	\$238	11.6%	90	12	10	6		88.4%
Townhouse	-	0.0%	-	0.0%	-	0.0%	-	0.0%	-	0.0%	-	-	-	-	-	0.0%
YTD:	-	0.0%	-	0.0%	-	0.0%	-	0.0%	-	0.0%	-	-	-	-	-	0.0%
Condominium	-	0.0%	-	0.0%	-	0.0%	-	0.0%	-	0.0%	-	-	-	-	-	0.0%
YTD:	-	0.0%	-	0.0%	-	0.0%	-	0.0%	-	0.0%	-	-	-	-	-	0.0%
<b>New Construction</b>																
Residential (SF/COND/TH)	-	0.0%	-	0.0%	-	0.0%	-	0.0%	-	0.0%	-	-	2	-	24.0	0.0%
YTD:	-	-100.0%	-	-100.0%	-	-100.0%	-	-100.0%	-	-100.0%	-	2	2	-		0.0%
Single Family	-	0.0%	-	0.0%	-	0.0%	-	0.0%	-	0.0%	-	-	2	-	24.0	0.0%
YTD:	-	-100.0%	-	-100.0%	-	-100.0%	-	-100.0%	-	-100.0%	-	2	2	-		0.0%
Townhouse	-	0.0%	-	0.0%	-	0.0%	-	0.0%	-	0.0%	-	-	-	-	-	0.0%
YTD:	-	0.0%	-	0.0%	-	0.0%	-	0.0%	-	0.0%	-	-	-	-	-	0.0%
Condominium	-	0.0%	-	0.0%	-	0.0%	-	0.0%	-	0.0%	-	-	-	-	-	0.0%
YTD:	-	0.0%	-	0.0%	-	0.0%	-	0.0%	-	0.0%	-	-	-	-	-	0.0%

\* Local Market Area Code: 484; Type: Census Place Group  
 \*\* Closed Sale counts for most recent 3 months are Preliminary.



Market Analysis By Local Market Area\*: Junction

Property Type	Closed Sales**	YoY%	Dollar Volume	YoY%	Average Price	YoY%	Median Price	YoY%	Price/Sqft	YoY%	DOM	New Listings	Active Listings	Pending Sales	Months Inventory	Close To OLP
<b>All(New and Existing)</b>																
Residential (SF/COND/TH)	1	100.0%	\$216,325	100.0%	\$216,325	100.0%	\$216,325	100.0%	\$149	100.0%	3	-	4	1	8.0	0.0%
YTD:	2	100.0%	\$286,325	257.9%	\$143,163	79.0%	\$143,163	79.0%	\$94	42.6%	8	6	4	3		0.0%
Single Family	1	100.0%	\$216,325	100.0%	\$216,325	100.0%	\$216,325	100.0%	\$149	100.0%	3	-	4	1	8.0	0.0%
YTD:	2	100.0%	\$286,325	257.9%	\$143,163	79.0%	\$143,163	79.0%	\$94	42.6%	8	6	4	3		0.0%
Townhouse	-	0.0%	-	0.0%	-	0.0%	-	0.0%	-	0.0%	-	-	-	-	-	0.0%
YTD:	-	0.0%	-	0.0%	-	0.0%	-	0.0%	-	0.0%	-	-	-	-	-	0.0%
Condominium	-	0.0%	-	0.0%	-	0.0%	-	0.0%	-	0.0%	-	-	-	-	-	0.0%
YTD:	-	0.0%	-	0.0%	-	0.0%	-	0.0%	-	0.0%	-	-	-	-	-	0.0%
<b>Existing Home</b>																
Residential (SF/COND/TH)	1	100.0%	\$216,325	100.0%	\$216,325	100.0%	\$216,325	100.0%	\$149	100.0%	3	-	4	1	8.0	0.0%
YTD:	2	100.0%	\$286,325	257.9%	\$143,163	79.0%	\$143,163	79.0%	\$94	42.6%	8	6	4	3		0.0%
Single Family	1	100.0%	\$216,325	100.0%	\$216,325	100.0%	\$216,325	100.0%	\$149	100.0%	3	-	4	1	8.0	0.0%
YTD:	2	100.0%	\$286,325	257.9%	\$143,163	79.0%	\$143,163	79.0%	\$94	42.6%	8	6	4	3		0.0%
Townhouse	-	0.0%	-	0.0%	-	0.0%	-	0.0%	-	0.0%	-	-	-	-	-	0.0%
YTD:	-	0.0%	-	0.0%	-	0.0%	-	0.0%	-	0.0%	-	-	-	-	-	0.0%
Condominium	-	0.0%	-	0.0%	-	0.0%	-	0.0%	-	0.0%	-	-	-	-	-	0.0%
YTD:	-	0.0%	-	0.0%	-	0.0%	-	0.0%	-	0.0%	-	-	-	-	-	0.0%
<b>New Construction</b>																
Residential (SF/COND/TH)	-	0.0%	-	0.0%	-	0.0%	-	0.0%	-	0.0%	-	-	-	-	-	0.0%
YTD:	-	0.0%	-	0.0%	-	0.0%	-	0.0%	-	0.0%	-	-	-	-	-	0.0%
Single Family	-	0.0%	-	0.0%	-	0.0%	-	0.0%	-	0.0%	-	-	-	-	-	0.0%
YTD:	-	0.0%	-	0.0%	-	0.0%	-	0.0%	-	0.0%	-	-	-	-	-	0.0%
Townhouse	-	0.0%	-	0.0%	-	0.0%	-	0.0%	-	0.0%	-	-	-	-	-	0.0%
YTD:	-	0.0%	-	0.0%	-	0.0%	-	0.0%	-	0.0%	-	-	-	-	-	0.0%
Condominium	-	0.0%	-	0.0%	-	0.0%	-	0.0%	-	0.0%	-	-	-	-	-	0.0%
YTD:	-	0.0%	-	0.0%	-	0.0%	-	0.0%	-	0.0%	-	-	-	-	-	0.0%

\* Local Market Area Code: 490; Type: Census Place Group  
 \*\* Closed Sale counts for most recent 3 months are Preliminary.

Market Analysis By Local Market Area\*: Mason

Property Type	Closed Sales**	YoY%	Dollar Volume	YoY%	Average Price	YoY%	Median Price	YoY%	Price/Sqft	YoY%	DOM	New Listings	Active Listings	Pending Sales	Months Inventory	Close To OLP
<b>All(New and Existing)</b>																
Residential (SF/COND/TH)	1	-88.9%	\$165,000	-92.4%	\$165,000	-31.7%	\$165,000	-31.3%	\$98	-53.2%	101	2	23	1	13.1	82.5%
YTD:	7	-63.2%	\$1,456,250	-74.8%	\$208,036	-31.6%	\$200,000	-28.6%	\$163	-27.1%	122	24	19	5		85.5%
Single Family	1	-88.9%	\$165,000	-92.4%	\$165,000	-31.7%	\$165,000	-31.3%	\$98	-53.2%	101	2	23	1	13.1	82.5%
YTD:	7	-63.2%	\$1,456,250	-74.8%	\$208,036	-31.6%	\$200,000	-28.6%	\$163	-27.1%	122	24	19	5		85.5%
Townhouse	-	0.0%	-	0.0%	-	0.0%	-	0.0%	-	0.0%	-	-	-	-	-	0.0%
YTD:	-	0.0%	-	0.0%	-	0.0%	-	0.0%	-	0.0%	-	-	-	-	-	0.0%
Condominium	-	0.0%	-	0.0%	-	0.0%	-	0.0%	-	0.0%	-	-	-	-	-	0.0%
YTD:	-	0.0%	-	0.0%	-	0.0%	-	0.0%	-	0.0%	-	-	-	-	-	0.0%
<b>Existing Home</b>																
Residential (SF/COND/TH)	1	-88.9%	\$165,000	-92.4%	\$165,000	-31.7%	\$165,000	-31.3%	\$98	-53.2%	101	2	23	1	13.8	82.5%
YTD:	7	-63.2%	\$1,456,250	-74.8%	\$208,036	-31.6%	\$200,000	-28.6%	\$163	-27.1%	122	24	19	5		85.5%
Single Family	1	-88.9%	\$165,000	-92.4%	\$165,000	-31.7%	\$165,000	-31.3%	\$98	-53.2%	101	2	23	1	13.8	82.5%
YTD:	7	-63.2%	\$1,456,250	-74.8%	\$208,036	-31.6%	\$200,000	-28.6%	\$163	-27.1%	122	24	19	5		85.5%
Townhouse	-	0.0%	-	0.0%	-	0.0%	-	0.0%	-	0.0%	-	-	-	-	-	0.0%
YTD:	-	0.0%	-	0.0%	-	0.0%	-	0.0%	-	0.0%	-	-	-	-	-	0.0%
Condominium	-	0.0%	-	0.0%	-	0.0%	-	0.0%	-	0.0%	-	-	-	-	-	0.0%
YTD:	-	0.0%	-	0.0%	-	0.0%	-	0.0%	-	0.0%	-	-	-	-	-	0.0%
<b>New Construction</b>																
Residential (SF/COND/TH)	-	0.0%	-	0.0%	-	0.0%	-	0.0%	-	0.0%	-	-	-	-	-	0.0%
YTD:	-	0.0%	-	0.0%	-	0.0%	-	0.0%	-	0.0%	-	-	-	-	-	0.0%
Single Family	-	0.0%	-	0.0%	-	0.0%	-	0.0%	-	0.0%	-	-	-	-	-	0.0%
YTD:	-	0.0%	-	0.0%	-	0.0%	-	0.0%	-	0.0%	-	-	-	-	-	0.0%
Townhouse	-	0.0%	-	0.0%	-	0.0%	-	0.0%	-	0.0%	-	-	-	-	-	0.0%
YTD:	-	0.0%	-	0.0%	-	0.0%	-	0.0%	-	0.0%	-	-	-	-	-	0.0%
Condominium	-	0.0%	-	0.0%	-	0.0%	-	0.0%	-	0.0%	-	-	-	-	-	0.0%
YTD:	-	0.0%	-	0.0%	-	0.0%	-	0.0%	-	0.0%	-	-	-	-	-	0.0%

\* Local Market Area Code: 620; Type: Census Place Group  
 \*\* Closed Sale counts for most recent 3 months are Preliminary.

Market Analysis By Local Market Area\*: Round Mountain

Property Type	Closed Sales**	YoY%	Dollar Volume	YoY%	Average Price	YoY%	Median Price	YoY%	Price/Sqft	YoY%	DOM	New Listings	Active Listings	Pending Sales	Months Inventory	Close To OLP
<b>All(New and Existing)</b>																
Residential (SF/COND/TH)	-	0.0%	-	0.0%	-	0.0%	-	0.0%	-	0.0%	-	1	1	-	-	0.0%
YTD:	-	0.0%	-	0.0%	-	0.0%	-	0.0%	-	0.0%	-	2	1	-	-	0.0%
Single Family	-	0.0%	-	0.0%	-	0.0%	-	0.0%	-	0.0%	-	1	1	-	-	0.0%
YTD:	-	0.0%	-	0.0%	-	0.0%	-	0.0%	-	0.0%	-	2	1	-	-	0.0%
Townhouse	-	0.0%	-	0.0%	-	0.0%	-	0.0%	-	0.0%	-	-	-	-	-	0.0%
YTD:	-	0.0%	-	0.0%	-	0.0%	-	0.0%	-	0.0%	-	-	-	-	-	0.0%
Condominium	-	0.0%	-	0.0%	-	0.0%	-	0.0%	-	0.0%	-	-	-	-	-	0.0%
YTD:	-	0.0%	-	0.0%	-	0.0%	-	0.0%	-	0.0%	-	-	-	-	-	0.0%
<b>Existing Home</b>																
Residential (SF/COND/TH)	-	0.0%	-	0.0%	-	0.0%	-	0.0%	-	0.0%	-	1	1	-	-	0.0%
YTD:	-	0.0%	-	0.0%	-	0.0%	-	0.0%	-	0.0%	-	1	1	-	-	0.0%
Single Family	-	0.0%	-	0.0%	-	0.0%	-	0.0%	-	0.0%	-	1	1	-	-	0.0%
YTD:	-	0.0%	-	0.0%	-	0.0%	-	0.0%	-	0.0%	-	1	1	-	-	0.0%
Townhouse	-	0.0%	-	0.0%	-	0.0%	-	0.0%	-	0.0%	-	-	-	-	-	0.0%
YTD:	-	0.0%	-	0.0%	-	0.0%	-	0.0%	-	0.0%	-	-	-	-	-	0.0%
Condominium	-	0.0%	-	0.0%	-	0.0%	-	0.0%	-	0.0%	-	-	-	-	-	0.0%
YTD:	-	0.0%	-	0.0%	-	0.0%	-	0.0%	-	0.0%	-	-	-	-	-	0.0%
<b>New Construction</b>																
Residential (SF/COND/TH)	-	0.0%	-	0.0%	-	0.0%	-	0.0%	-	0.0%	-	-	-	-	-	0.0%
YTD:	-	0.0%	-	0.0%	-	0.0%	-	0.0%	-	0.0%	-	1	1	-	-	0.0%
Single Family	-	0.0%	-	0.0%	-	0.0%	-	0.0%	-	0.0%	-	-	-	-	-	0.0%
YTD:	-	0.0%	-	0.0%	-	0.0%	-	0.0%	-	0.0%	-	1	1	-	-	0.0%
Townhouse	-	0.0%	-	0.0%	-	0.0%	-	0.0%	-	0.0%	-	-	-	-	-	0.0%
YTD:	-	0.0%	-	0.0%	-	0.0%	-	0.0%	-	0.0%	-	-	-	-	-	0.0%
Condominium	-	0.0%	-	0.0%	-	0.0%	-	0.0%	-	0.0%	-	-	-	-	-	0.0%
YTD:	-	0.0%	-	0.0%	-	0.0%	-	0.0%	-	0.0%	-	-	-	-	-	0.0%

\* Local Market Area Code: 871; Type: Census Place Group  
 \*\* Closed Sale counts for most recent 3 months are Preliminary.

Market Analysis By Local Market Area\*: Stonewall

Property Type	Closed Sales**	YoY%	Dollar Volume	YoY%	Average Price	YoY%	Median Price	YoY%	Price/Sqft	YoY%	DOM	New Listings	Active Listings	Pending Sales	Months Inventory	Close To OLP
<b>All(New and Existing)</b>																
Residential (SF/COND/TH)	-	0.0%	-	0.0%	-	0.0%	-	0.0%	-	0.0%	-	-	3	-	36.0	0.0%
YTD:	-	-100.0%	-	-100.0%	-	-100.0%	-	-100.0%	-	-100.0%	-	2	2	-		0.0%
Single Family	-	0.0%	-	0.0%	-	0.0%	-	0.0%	-	0.0%	-	-	3	-	36.0	0.0%
YTD:	-	-100.0%	-	-100.0%	-	-100.0%	-	-100.0%	-	-100.0%	-	2	2	-		0.0%
Townhouse	-	0.0%	-	0.0%	-	0.0%	-	0.0%	-	0.0%	-	-	-	-	-	0.0%
YTD:	-	0.0%	-	0.0%	-	0.0%	-	0.0%	-	0.0%	-	-	-	-	-	0.0%
Condominium	-	0.0%	-	0.0%	-	0.0%	-	0.0%	-	0.0%	-	-	-	-	-	0.0%
YTD:	-	0.0%	-	0.0%	-	0.0%	-	0.0%	-	0.0%	-	-	-	-	-	0.0%
<b>Existing Home</b>																
Residential (SF/COND/TH)	-	0.0%	-	0.0%	-	0.0%	-	0.0%	-	0.0%	-	-	3	-	36.0	0.0%
YTD:	-	-100.0%	-	-100.0%	-	-100.0%	-	-100.0%	-	-100.0%	-	2	2	-		0.0%
Single Family	-	0.0%	-	0.0%	-	0.0%	-	0.0%	-	0.0%	-	-	3	-	36.0	0.0%
YTD:	-	-100.0%	-	-100.0%	-	-100.0%	-	-100.0%	-	-100.0%	-	2	2	-		0.0%
Townhouse	-	0.0%	-	0.0%	-	0.0%	-	0.0%	-	0.0%	-	-	-	-	-	0.0%
YTD:	-	0.0%	-	0.0%	-	0.0%	-	0.0%	-	0.0%	-	-	-	-	-	0.0%
Condominium	-	0.0%	-	0.0%	-	0.0%	-	0.0%	-	0.0%	-	-	-	-	-	0.0%
YTD:	-	0.0%	-	0.0%	-	0.0%	-	0.0%	-	0.0%	-	-	-	-	-	0.0%
<b>New Construction</b>																
Residential (SF/COND/TH)	-	0.0%	-	0.0%	-	0.0%	-	0.0%	-	0.0%	-	-	-	-	-	0.0%
YTD:	-	0.0%	-	0.0%	-	0.0%	-	0.0%	-	0.0%	-	-	-	-	-	0.0%
Single Family	-	0.0%	-	0.0%	-	0.0%	-	0.0%	-	0.0%	-	-	-	-	-	0.0%
YTD:	-	0.0%	-	0.0%	-	0.0%	-	0.0%	-	0.0%	-	-	-	-	-	0.0%
Townhouse	-	0.0%	-	0.0%	-	0.0%	-	0.0%	-	0.0%	-	-	-	-	-	0.0%
YTD:	-	0.0%	-	0.0%	-	0.0%	-	0.0%	-	0.0%	-	-	-	-	-	0.0%
Condominium	-	0.0%	-	0.0%	-	0.0%	-	0.0%	-	0.0%	-	-	-	-	-	0.0%
YTD:	-	0.0%	-	0.0%	-	0.0%	-	0.0%	-	0.0%	-	-	-	-	-	0.0%

\* Local Market Area Code: 966; Type: Census Place Group  
 \*\* Closed Sale counts for most recent 3 months are Preliminary.

