



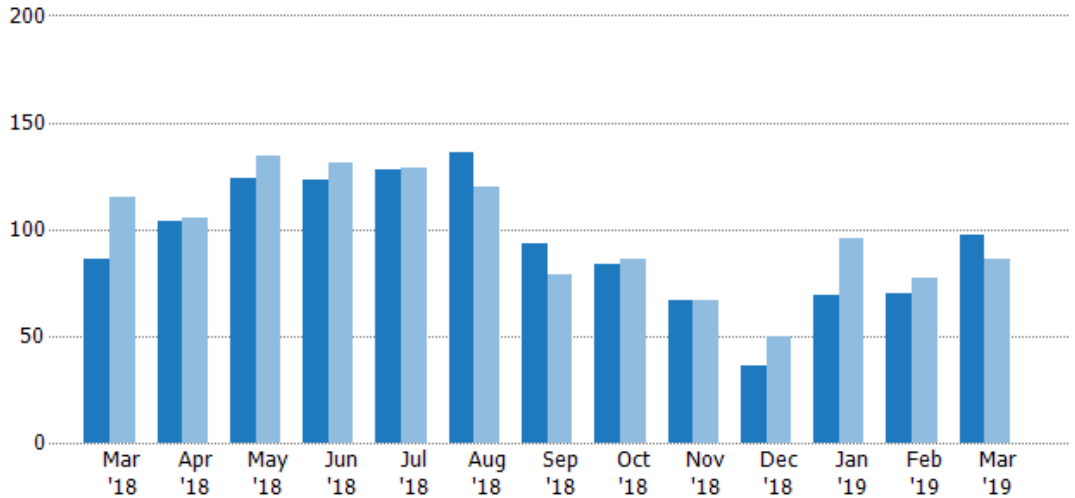
## New Listings

The number of new residential listings that were added each month.

Filters Used

County: 6 Selected

Month/Year	Count	% Chg.
Mar '19	97	12.8%
Mar '18	86	-25.2%
Mar '17	115	-10.4%



	Mar '18	Apr '18	May '18	Jun '18	Jul '18	Aug '18	Sep '18	Oct '18	Nov '18	Dec '18	Jan '19	Feb '19	Mar '19
Current Year	86	104	124	123	128	136	93	84	67	36	69	70	97
Prior Year	115	105	134	131	129	120	79	86	67	50	96	77	86
Percent Change from Prior Year	-25%	-1%	-7%	-6%	-1%	13%	18%	-2%	0%	-28%	-28%	-9%	13%

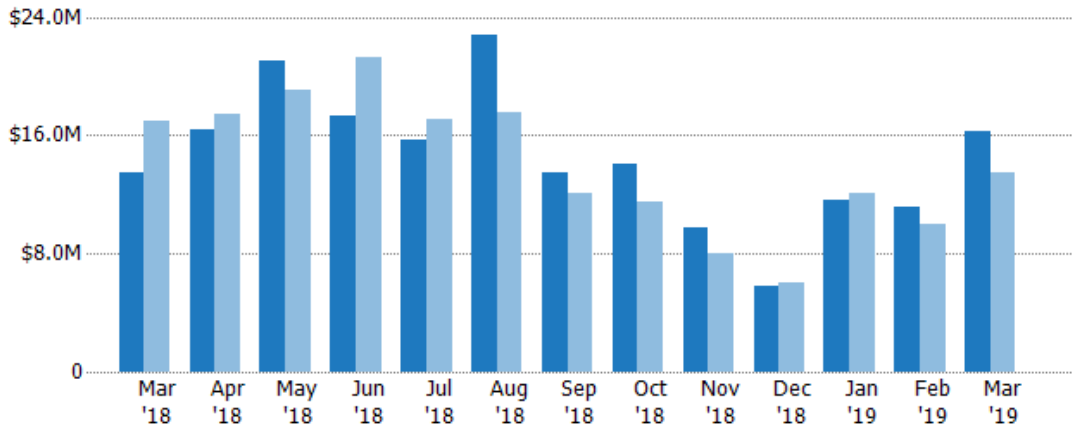
## New Listing Volume

The sum of the listing price of residential listings that were added each month.

Filters Used

County: 6 Selected

Month/Year	Volume	% Chg.
Mar '19	\$16.3M	20.2%
Mar '18	\$13.5M	-20.2%
Mar '17	\$17M	1.4%



	Mar '18	Apr '18	May '18	Jun '18	Jul '18	Aug '18	Sep '18	Oct '18	Nov '18	Dec '18	Jan '19	Feb '19	Mar '19
Current Year	\$13.5M	\$16.4M	\$21.1M	\$17.3M	\$15.7M	\$22.8M	\$13.5M	\$14.1M	\$9.79M	\$5.81M	\$11.6M	\$11.2M	\$16.3M
Prior Year	\$17M	\$17.5M	\$19.1M	\$21.2M	\$17.1M	\$17.5M	\$12.1M	\$11.5M	\$7.97M	\$5.99M	\$12M	\$9.98M	\$13.5M
Percent Change from Prior Year	-20%	-6%	10%	-19%	-8%	30%	12%	23%	23%	-3%	-4%	12%	20%

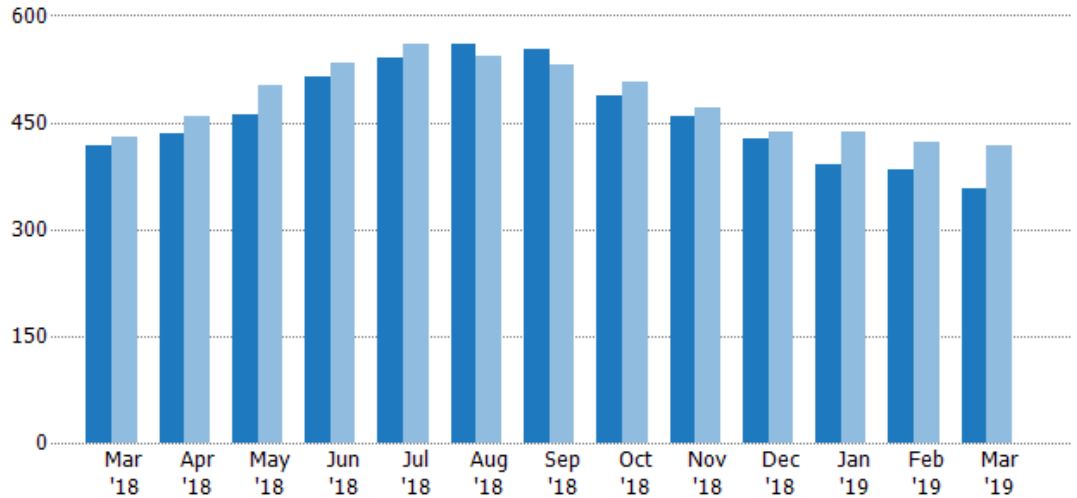
## Active Listings

The number of active residential listings at the end of each month.

Filters Used

County: 6 Selected

Month/Year	Count	% Chg.
Mar '19	356	-14.6%
Mar '18	417	-3%
Mar '17	430	7%



	Mar '18	Apr '18	May '18	Jun '18	Jul '18	Aug '18	Sep '18	Oct '18	Nov '18	Dec '18	Jan '19	Feb '19	Mar '19
Current Year	417	435	461	513	540	559	552	487	458	426	390	383	356
Prior Year	430	458	502	533	561	544	531	508	471	436	436	423	417
Percent Change from Prior Year	-3%	-5%	-8%	-4%	-4%	3%	4%	-4%	-3%	-2%	-11%	-9%	-15%

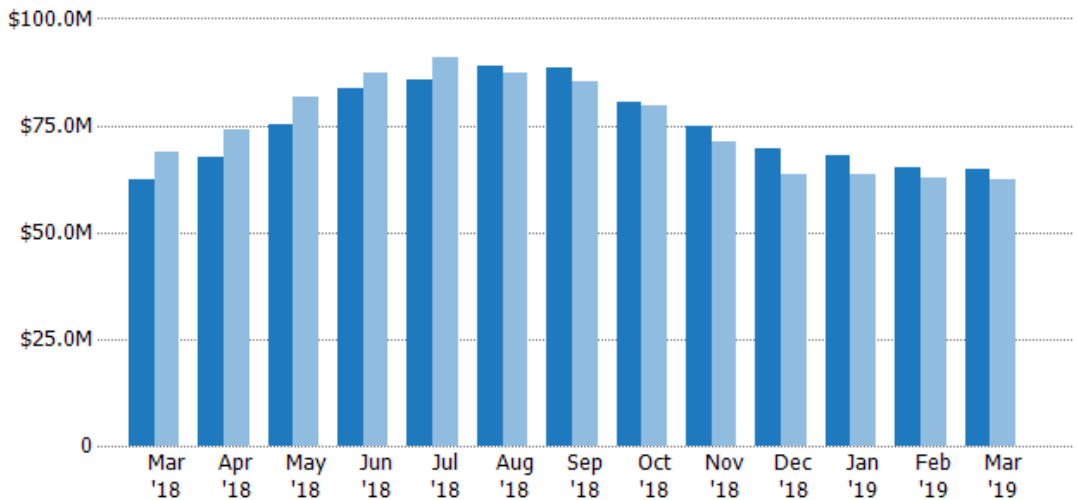
## Active Listing Volume

The sum of the listing price of active residential listings at the end of each month.

Filters Used

County: 6 Selected

Month/Year	Volume	% Chg.
Mar '19	\$64.8M	4.1%
Mar '18	\$62.3M	-9.4%
Mar '17	\$68.8M	10%



	Mar '18	Apr '18	May '18	Jun '18	Jul '18	Aug '18	Sep '18	Oct '18	Nov '18	Dec '18	Jan '19	Feb '19	Mar '19
Current Year	\$62.3M	\$67.7M	\$75.1M	\$83.5M	\$85.8M	\$88.7M	\$88.4M	\$80.4M	\$74.7M	\$69.6M	\$67.9M	\$65.2M	\$64.8M
Prior Year	\$68.8M	\$74M	\$81.5M	\$87.4M	\$90.8M	\$87.5M	\$85.3M	\$79.5M	\$71.2M	\$63.7M	\$63.5M	\$62.7M	\$62.3M
Percent Change from Prior Year	-9%	-9%	-8%	-4%	-6%	1%	4%	1%	5%	9%	7%	4%	4%

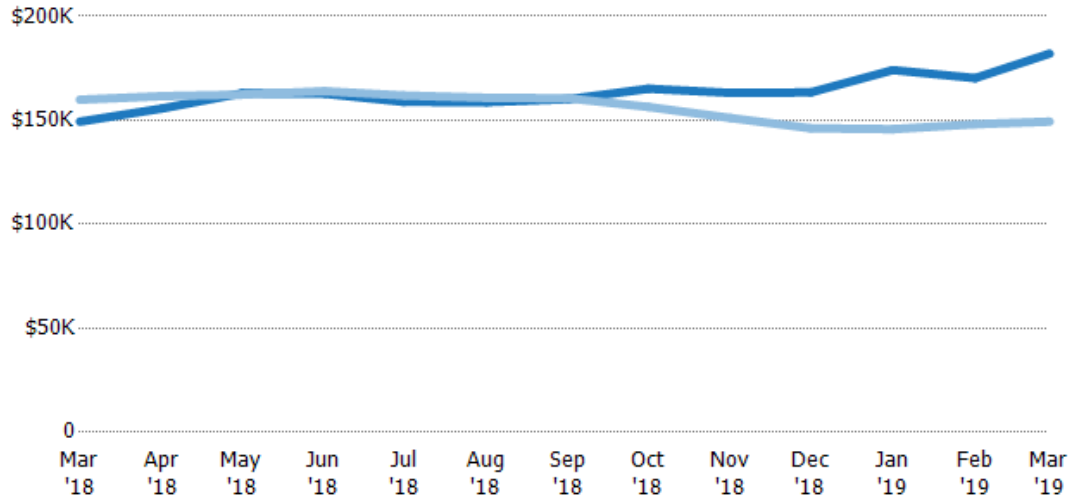
## Average Listing Price

The average listing price of active residential listings at the end of each month.

Filters Used

County: 6 Selected

Month/Year	Price	% Chg.
Mar '19	\$182K	21.9%
Mar '18	\$149K	-6.6%
Mar '17	\$160K	3%



	Mar '18	Apr '18	May '18	Jun '18	Jul '18	Aug '18	Sep '18	Oct '18	Nov '18	Dec '18	Jan '19	Feb '19	Mar '19
Current Year	\$149K	\$156K	\$163K	\$163K	\$159K	\$159K	\$160K	\$165K	\$163K	\$163K	\$174K	\$170K	\$182K
Prior Year	\$160K	\$162K	\$162K	\$164K	\$162K	\$161K	\$161K	\$156K	\$151K	\$146K	\$146K	\$148K	\$149K
Percent Change from Prior Year	-7%	-4%	0%	-1%	-2%	-1%	0%	6%	8%	12%	19%	15%	22%

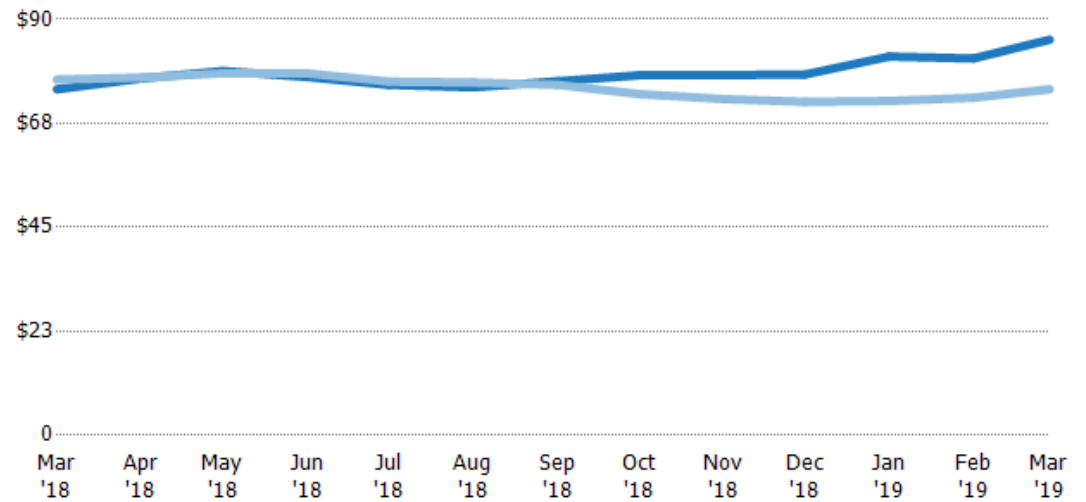
## Average Listing Price per Sq Ft

The average of listing prices divided by the living area of homes on market at the end of each month.

Filters Used

County: 6 Selected

Month/Year	Price/sq ft	% Chg.
Mar '19	\$85.6	14.3%
Mar '18	\$74.9	-2.7%
Mar '17	\$77	3.4%

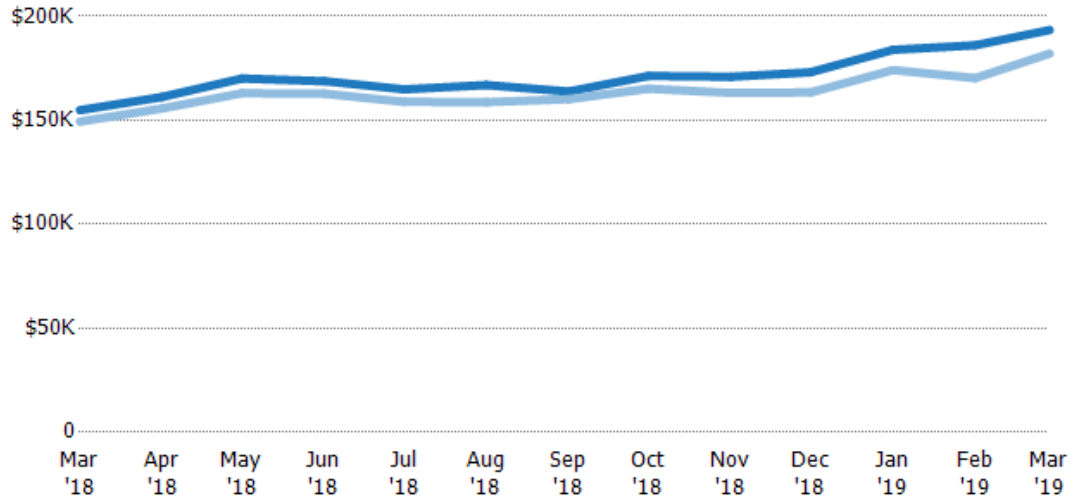


	Mar '18	Apr '18	May '18	Jun '18	Jul '18	Aug '18	Sep '18	Oct '18	Nov '18	Dec '18	Jan '19	Feb '19	Mar '19
Current Year	\$74.9	\$77.2	\$78.8	\$77.5	\$75.8	\$75.3	\$76.6	\$77.9	\$77.9	\$78.1	\$81.9	\$81.5	\$85.6
Prior Year	\$77	\$77.4	\$78.3	\$78.3	\$76.5	\$76.3	\$75.8	\$73.8	\$72.8	\$72.1	\$72.3	\$73	\$74.9
Percent Change from Prior Year	-3%	0%	1%	-1%	-1%	-1%	1%	6%	7%	8%	13%	12%	14%

## Average Listing Price vs Average Est Value

The average listing price as a percentage of the average AVM or RVM® valuation estimate for active listings each month.

Filters Used  
County: 6 Selected



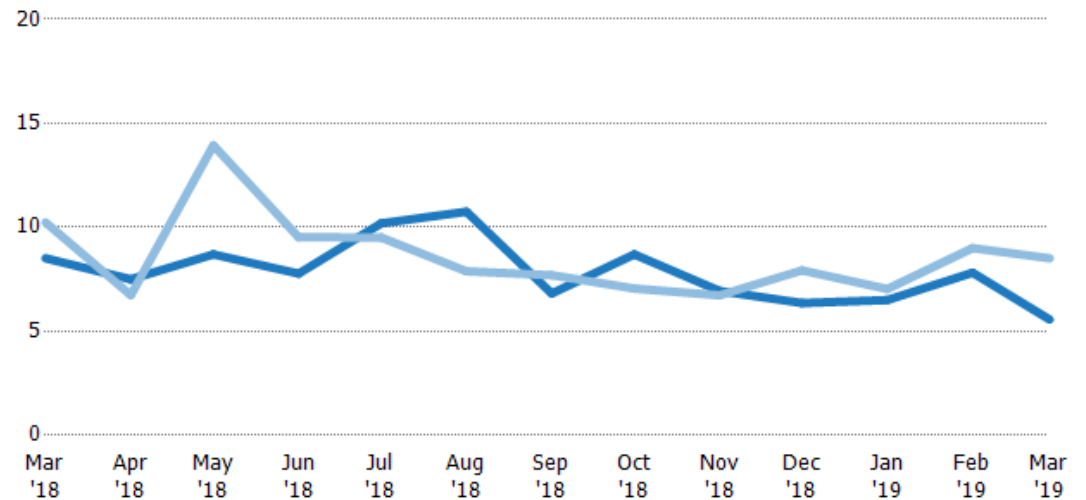
	Mar '18	Apr '18	May '18	Jun '18	Jul '18	Aug '18	Sep '18	Oct '18	Nov '18	Dec '18	Jan '19	Feb '19	Mar '19
Avg Est Value	\$155K	\$161K	\$170K	\$169K	\$165K	\$167K	\$164K	\$171K	\$171K	\$173K	\$184K	\$186K	\$193K
Avg Listing Price	\$149K	\$156K	\$163K	\$163K	\$159K	\$159K	\$160K	\$165K	\$163K	\$163K	\$174K	\$170K	\$182K
Avg Listing Price as a % of Avg Est Value	96%	97%	96%	96%	96%	95%	98%	96%	95%	94%	95%	92%	94%

## Months of Inventory

The number of months it would take to exhaust active listings at the current sales rate.

Filters Used  
County: 6 Selected

Month/Year	Months	% Chg.
Mar '19	5.56	-34.6%
Mar '18	8.51	-16.9%
Mar '17	10.2	40.4%



	Mar '18	Apr '18	May '18	Jun '18	Jul '18	Aug '18	Sep '18	Oct '18	Nov '18	Dec '18	Jan '19	Feb '19	Mar '19
Current Year	8.51	7.5	8.7	7.77	10.2	10.8	6.81	8.7	6.94	6.36	6.5	7.82	5.56
Prior Year	10.2	6.74	13.9	9.52	9.51	7.88	7.7	7.06	6.73	7.93	7.03	9	8.51
Percent Change from Prior Year	-17%	11%	-38%	-18%	7%	36%	-11%	23%	3%	-20%	-8%	-13%	-35%

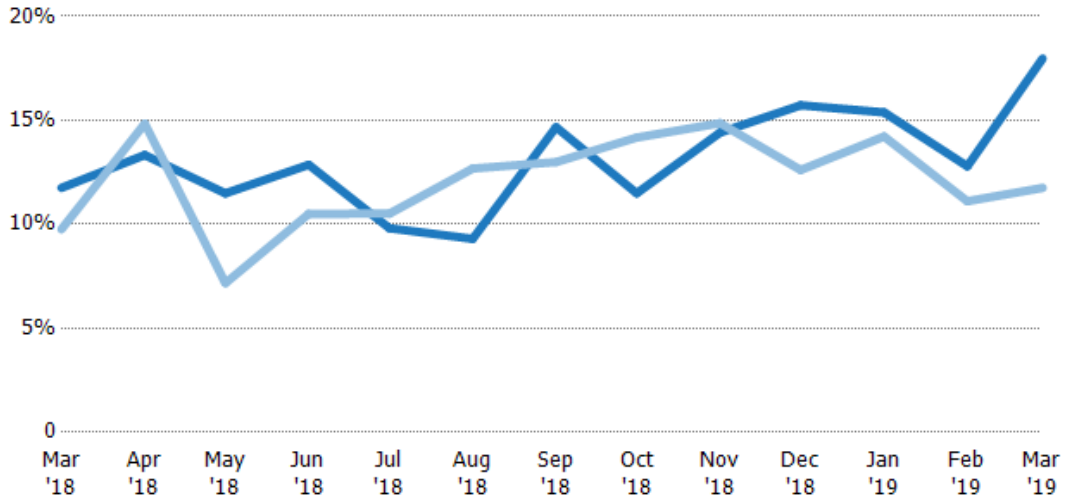
### Absorption Rate

The percentage of inventory sold per month.

Filters Used

County: 6 Selected

Month/Year	Rate	Chg.
Mar '19	18%	-6.2%
Mar '18	12%	-2%
Mar '17	10%	-28.8%

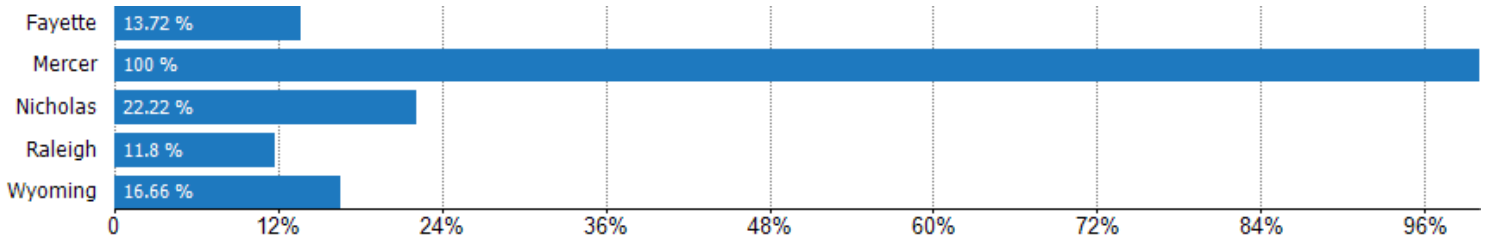


	Mar '18	Apr '18	May '18	Jun '18	Jul '18	Aug '18	Sep '18	Oct '18	Nov '18	Dec '18	Jan '19	Feb '19	Mar '19
Current Year	12%	13%	11%	13%	10%	9%	15%	11%	14%	16%	15%	13%	18%
Prior Year	10%	15%	7%	11%	11%	13%	13%	14%	15%	13%	14%	11%	12%
Change from Prior Year	-2%	2%	-4%	-2%	1%	3%	-2%	3%	0%	-3%	-1%	-2%	-6%

### Absorption Rate (By County)

The percentage of the inventory sold during the last month by county.

Filters Used: County: 6 Selected



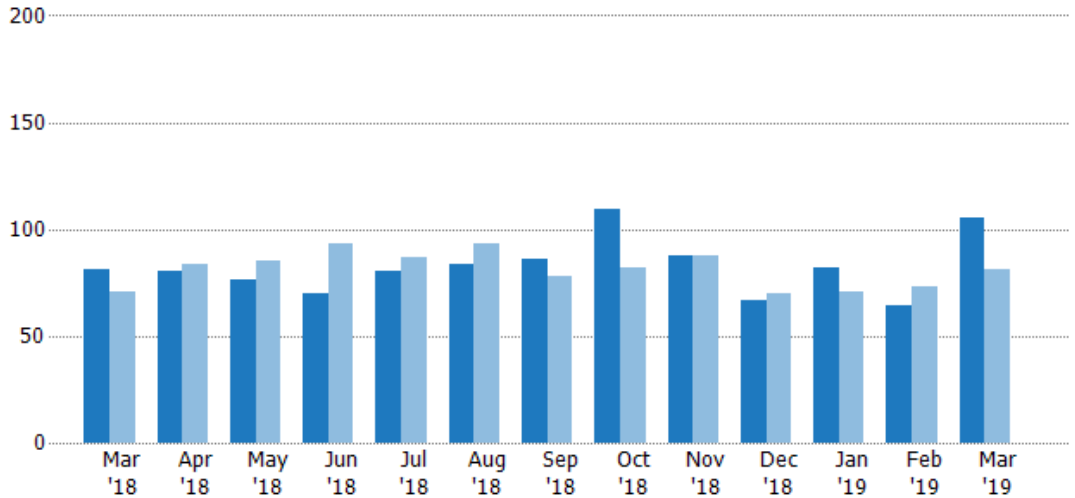
## Pending Sales

The number of residential properties with accepted offers that were available at the end each month.

Filters Used

County: 6 Selected

Month/Year	Count	% Chg.
Mar '19	105	29.6%
Mar '18	81	14.1%
Mar '17	71	-28.2%



Current Year	81	80	76	70	80	84	86	109	88	67	82	64	105
Prior Year	71	84	85	93	87	93	78	82	88	70	71	73	81
Percent Change from Prior Year	14%	-5%	-11%	-25%	-8%	-10%	10%	33%	0%	-4%	15%	-12%	30%

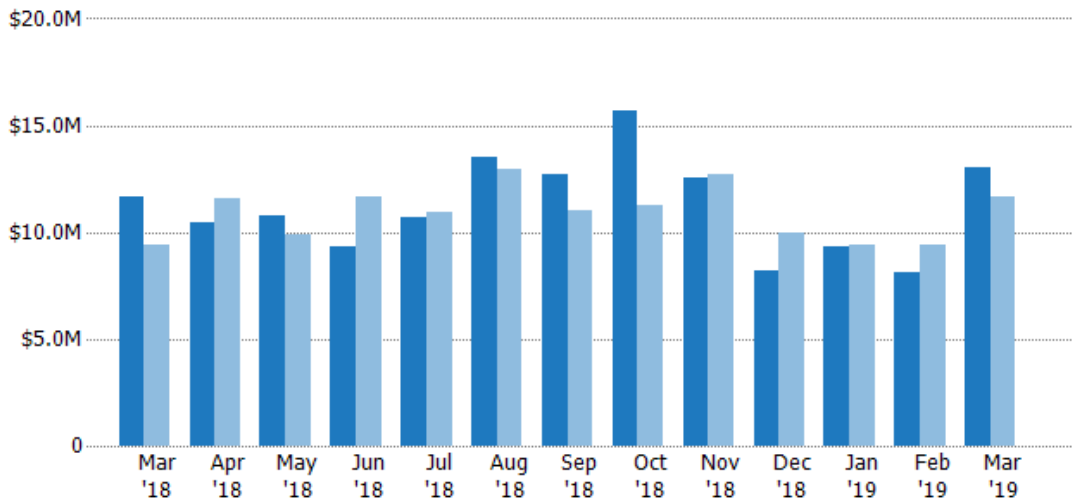
## Pending Sales Volume

The sum of the sales price of residential properties with accepted offers that were available at the end of each month.

Filters Used

County: 6 Selected

Month/Year	Volume	% Chg.
Mar '19	\$13.1M	11.7%
Mar '18	\$11.7M	24%
Mar '17	\$9.43M	-25.6%



Current Year	\$11.7M	\$10.4M	\$10.8M	\$9.33M	\$10.7M	\$13.5M	\$12.7M	\$15.7M	\$12.6M	\$8.19M	\$9.35M	\$8.14M	\$13.1M
Prior Year	\$9.43M	\$11.6M	\$9.9M	\$11.7M	\$10.9M	\$12.9M	\$11M	\$11.3M	\$12.7M	\$9.97M	\$9.38M	\$9.37M	\$11.7M
Percent Change from Prior Year	24%	-10%	9%	-20%	-2%	5%	16%	39%	-1%	-18%	0%	-13%	12%

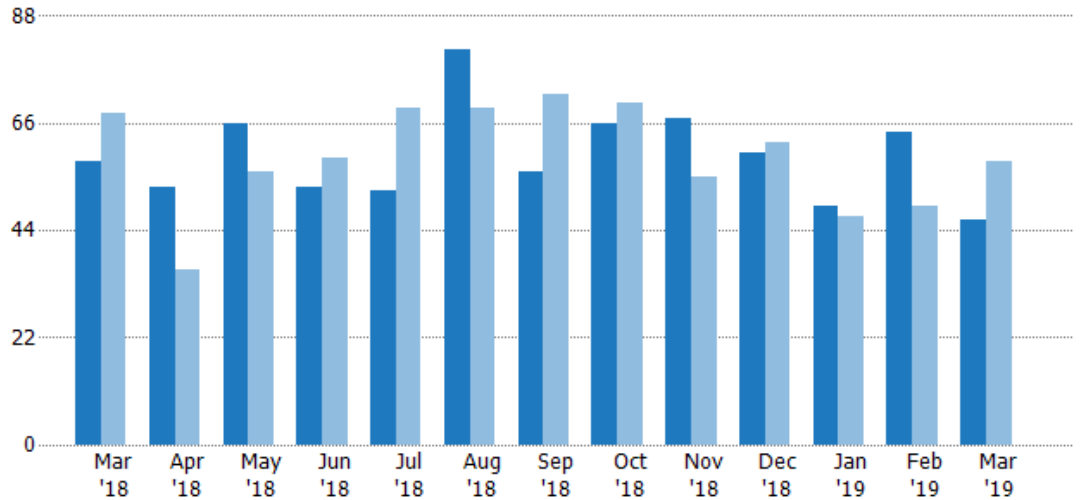
## Closed Sales

The total number of residential properties sold each month.

Filters Used

County: 6 Selected

Month/Year	Count	% Chg.
Mar '19	46	-20.7%
Mar '18	58	-14.7%
Mar '17	68	-48.5%



	Mar '18	Apr '18	May '18	Jun '18	Jul '18	Aug '18	Sep '18	Oct '18	Nov '18	Dec '18	Jan '19	Feb '19	Mar '19
Current Year	58	53	66	53	52	81	56	66	67	60	49	64	46
Prior Year	68	36	56	59	69	69	72	70	55	62	47	49	58
Percent Change from Prior Year	-15%	47%	18%	-10%	-25%	17%	-22%	-6%	22%	-3%	4%	31%	-21%

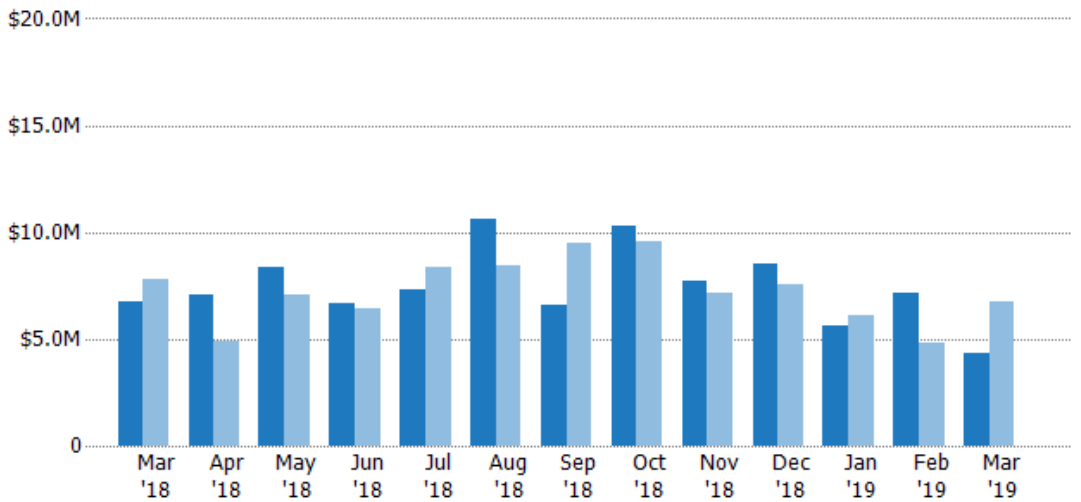
## Closed Sales Volume

The sum of the sales price of residential properties sold each month.

Filters Used

County: 6 Selected

Month/Year	Volume	% Chg.
Mar '19	\$4.37M	-35.5%
Mar '18	\$6.77M	-13.3%
Mar '17	\$7.81M	-26%



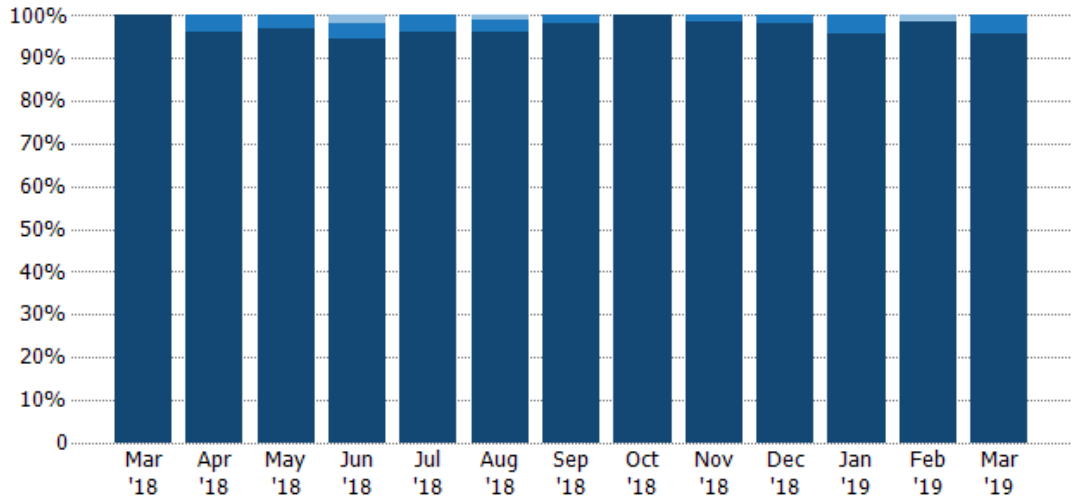
	Mar '18	Apr '18	May '18	Jun '18	Jul '18	Aug '18	Sep '18	Oct '18	Nov '18	Dec '18	Jan '19	Feb '19	Mar '19
Current Year	\$6.77M	\$7.04M	\$8.38M	\$6.67M	\$7.28M	\$10.6M	\$6.6M	\$10.3M	\$7.73M	\$8.55M	\$5.62M	\$7.17M	\$4.37M
Prior Year	\$7.81M	\$4.89M	\$7.04M	\$6.4M	\$8.36M	\$8.4M	\$9.49M	\$9.58M	\$7.13M	\$7.52M	\$6.12M	\$4.82M	\$6.77M
Percent Change from Prior Year	-13%	44%	19%	4%	-13%	26%	-30%	7%	8%	14%	-8%	49%	-36%



### Closed Sales by Property Type

The percentage of residential properties sold each month by property type.

Filters Used  
County: 6 Selected

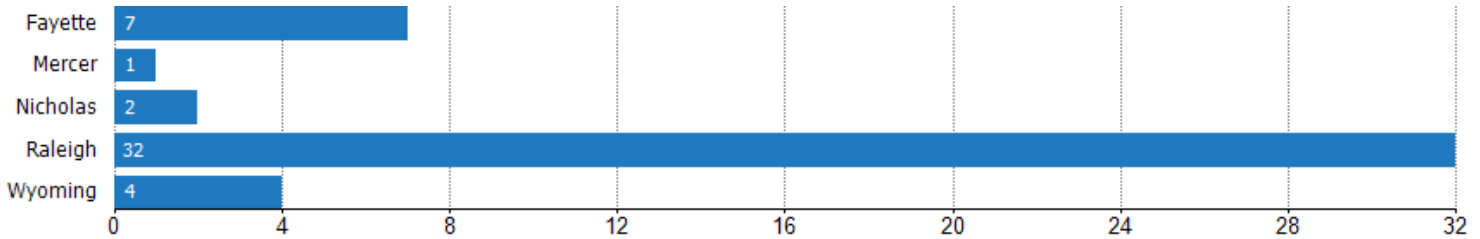


Property Type	Mar '18	Apr '18	May '18	Jun '18	Jul '18	Aug '18	Sep '18	Oct '18	Nov '18	Dec '18	Jan '19	Feb '19	Mar '19
Mobile/Manufactured	-	-	-	2%	-	1%	-	-	-	-	-	2%	-
Condo/Townhouse	-	4%	3%	4%	4%	2%	2%	-	1%	2%	4%	-	4%
Single Family Residence	100%	96%	97%	94%	96%	96%	98%	100%	99%	98%	96%	98%	96%

### Closed Sales (By County)

The total number of residential properties sold during the last month by county.

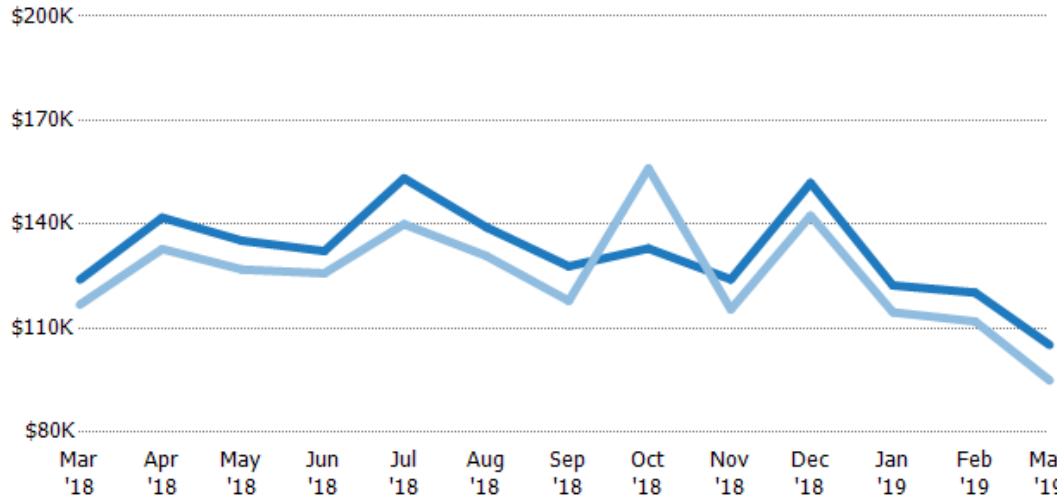
Filters Used: County: 6 Selected



## Average Sales Price vs Average Listing Price

The average sales price as a percentage of the average listing price for properties sold each month.

Filters Used  
County: 6 Selected

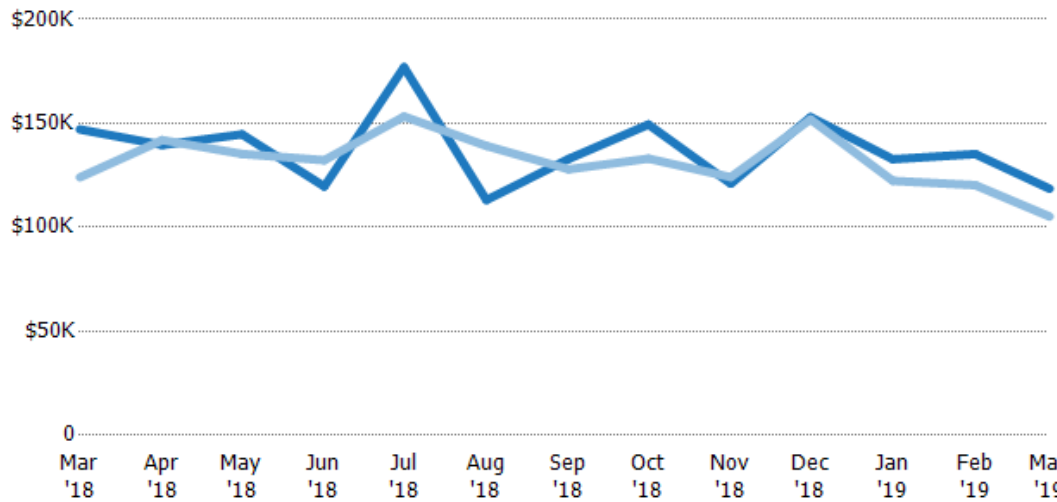


Avg List Price	\$124K	\$142K	\$135K	\$132K	\$153K	\$139K	\$128K	\$133K	\$124K	\$152K	\$122K	\$120K	\$105K
Avg Sales Price	\$117K	\$133K	\$127K	\$126K	\$140K	\$131K	\$118K	\$156K	\$115K	\$143K	\$115K	\$112K	\$95K
Avg Sales Price as a % of Avg List Price	94%	94%	94%	95%	91%	94%	92%	117%	93%	94%	94%	93%	90%

## Average Sales Price vs Average Est Value

The average sales price as a percentage of the average AVM or RVM® valuation estimate for properties sold each month.

Filters Used  
County: 6 Selected



Avg Est Value	\$147K	\$140K	\$145K	\$120K	\$177K	\$113K	\$133K	\$149K	\$121K	\$153K	\$133K	\$135K	\$119K
Avg Sales Price	\$124K	\$142K	\$135K	\$132K	\$153K	\$139K	\$128K	\$133K	\$124K	\$152K	\$122K	\$120K	\$105K
Avg Sales Price as a % of Avg Est Value	84%	102%	93%	111%	87%	123%	96%	89%	103%	99%	92%	89%	89%

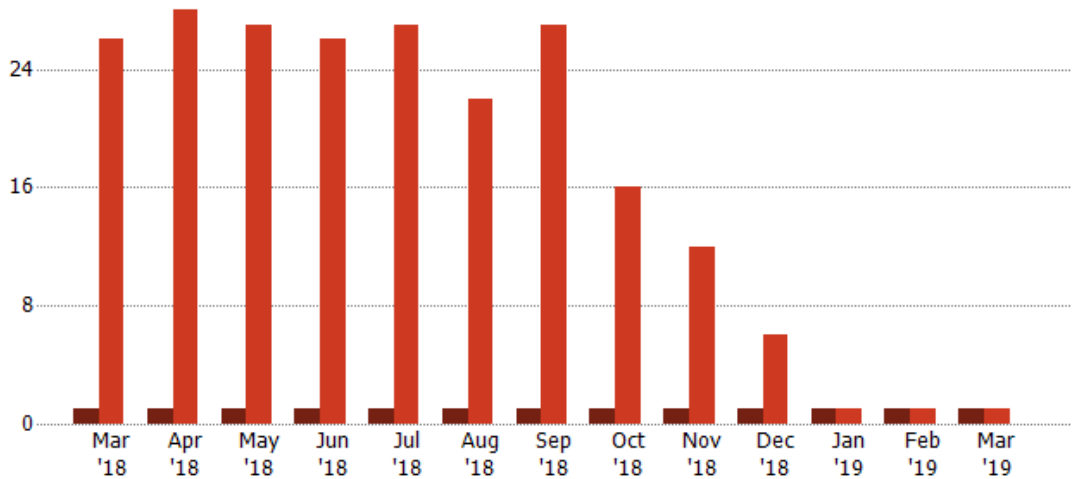
### Distressed Listings

The number of distressed residential properties that were for sale at the end of each month.

Filters Used

County: 6 Selected

Month/Year	Count	% Chg.
Mar '19	1	0%
Mar '18	1	-96.2%
Mar '17	26	-23.1%

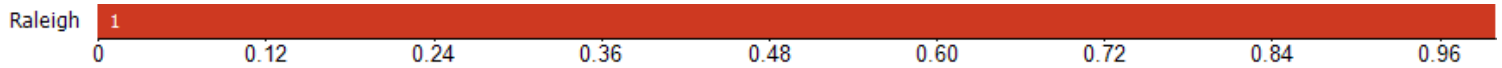


Current Year	1	1	1	1	1	1	1	1	1	1	1	1	1
Prior Year	26	28	27	26	27	22	27	16	12	6	1	1	1
Percent Change from Prior Year	-96%	-96%	-96%	-96%	-96%	-95%	-96%	-94%	-92%	-83%	0%	0%	0%

### Distressed Listings (By County)

The number of distressed single-family, condominium and townhome properties that were for sale at the end of the last month by county.

Filters Used: County: 6 Selected



## Appendix

The metrics that are calculated by RPR® may show the same general trends as those published by other sources (i.e. MLS, Associations or vendors), but because of our processes and parcel-centric approach, some variation may occur. Data sources include MLS's, where licensed, and public records for more in-depth metrics on distressed properties.

### Report Details

**Report Name:** Monthly Market Data Report

**Run Date:** 04/08/2019

**Scheduled:** Yes

**Report Date Range:** From 3/2018 To: 3/2019

### Information Included

- Include Cover Sheet
- Include Key Metric Summary
- Include Metrics By: County
- Averages
- Include Appendix
- Medians

### MLS Filter

**MLS:** All

### Listing Filters

**Property Types:** All

**Sales Types:** All

**Price Range:** None

### Location Filters

**State:** All

<b>County:</b>	Fayette County, West Virginia	Kanawha County, West Virginia	Mercer County, West Virginia
	Nicholas County, West Virginia	Raleigh County, West Virginia	Wyoming County, West Virginia

**ZIP Code:** All

### Listing Activity Charts

- New Listings
- Active Listings
- Average Listing Price
- Average Listing Price per Sq Ft
- Average Listing Price vs Est Value
- Median Days in RPR
- Months of Inventory
- Absorption Rate

### Sales Activity Charts

- Active/Pending/Sold
- New Pending Sales
- Pending Sales
- Closed Sales
- Average Sales Price
- Average Sales Price per Sq Ft
- Average Sales Price vs Listing Price
- Average Sales Price vs Est Value

### Distressed Charts

- Distressed Listings
- Distressed Sales

### Data Tables Using 3/2019 data

- Listing Activity by ZIP
- Listing Activity by Metro Area
- Sales Activity by ZIP
- Sales Activity by Metro Area