

SCHUMACHER HOMES

BUILD ON YOUR LOT:

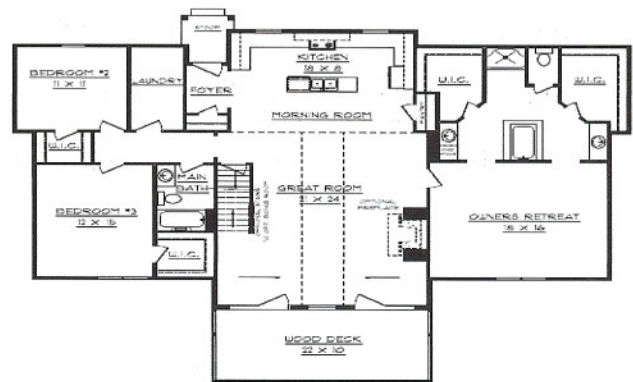
CALL FOR PRICING



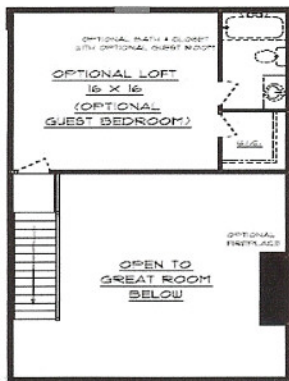
The Woodland - Value

Vinyl siding
2019 sq. ft.
3 bedroom
2 baths

Great room
Laundry room
Kitchen
Deck
Heat pump



WOODLAND
MAIN FLOOR PLAN



WOODLAND
OPTIONAL SECOND FLOOR PLAN

Range
Dishwasher
Andersen windows

**10 year
structural warranty**

Model home can be modified before construction starts to completely satisfy the buyer.

Lot Prep and Utilities Not Included

Schumacher Home Models are priced for Wilkes County, North Carolina and marketed by Sherrill Faw Realty, LLC and are not official until approved by Schumacher Homes Representative.

PRICES MAY VARY AS CONDITIONS CHANGE WITHOUT NOTICE