

SCHUMACHER HOMES

BUILD ON YOUR LOT:

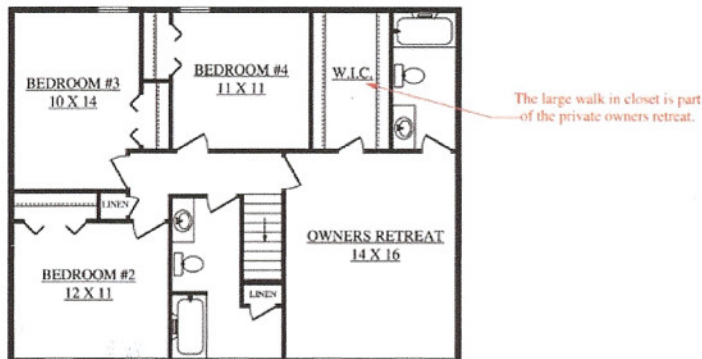
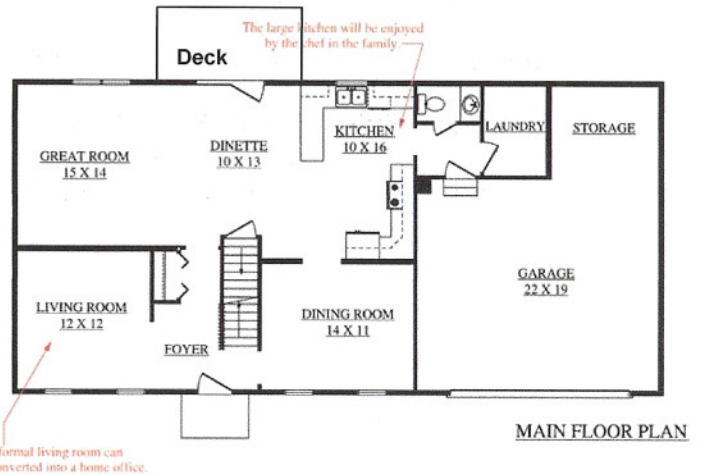
CALL FOR PRICING



Brick and vinyl
2137 sq. ft.
4 bedroom
2 1/2 baths

Avalon A - Value

Great room
Double garage attached
Laundry room
Dining Room
10 X 16 sundeck
Kitchen
Heat pump



SECOND FLOOR PLAN

Range
Dishwasher
Microwave
Andersen windows

**10 year
structural warranty**

Model home can be modified before construction starts to completely satisfy the buyer.

Lot Prep and Utilities Not Included

Schumacher Home Models are priced for Wilkes County, North Carolina and marketed by Sherrill Faw Realty, LLC and are not official until approved by Schumacher Homes Representative.

PRICES MAY VARY AS CONDITIONS CHANGE WITHOUT NOTICE